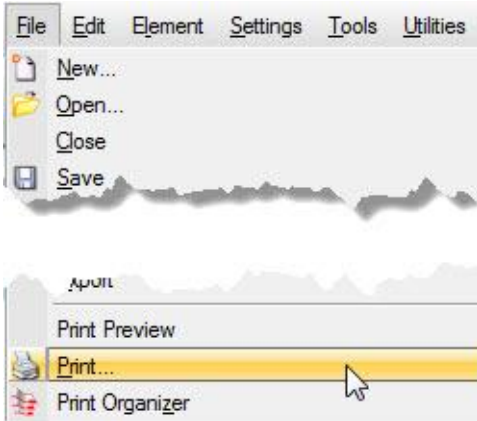


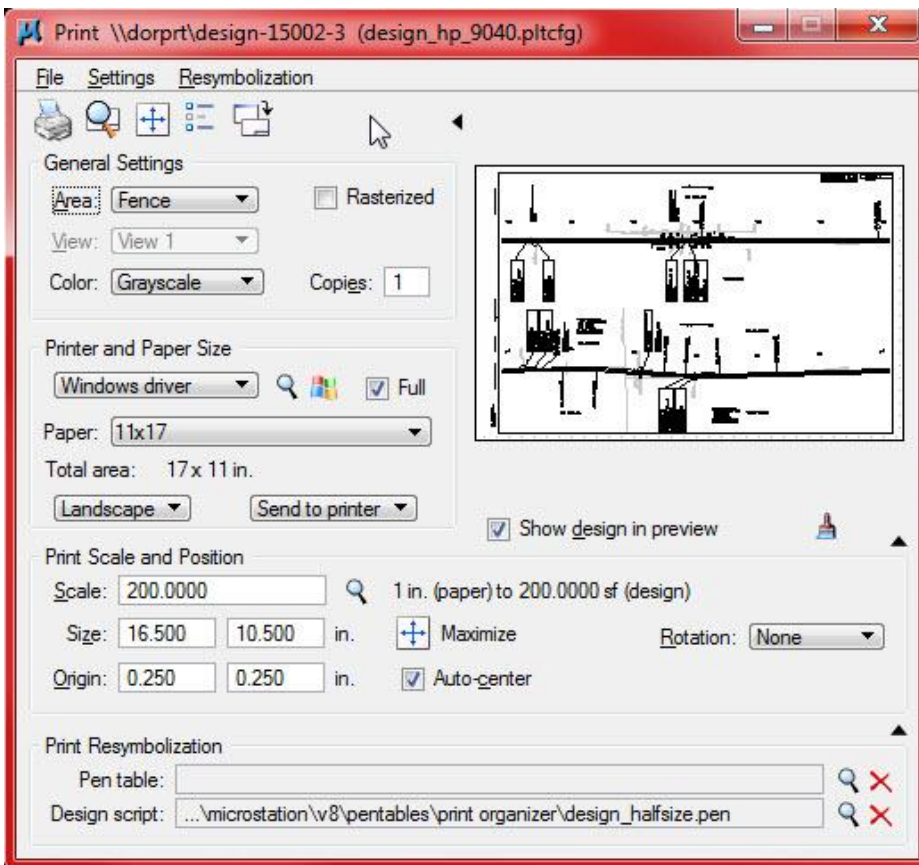
MicroStation V8i Print

October, 2012

In a MicroStation file, click on “File” and click on “Print”.



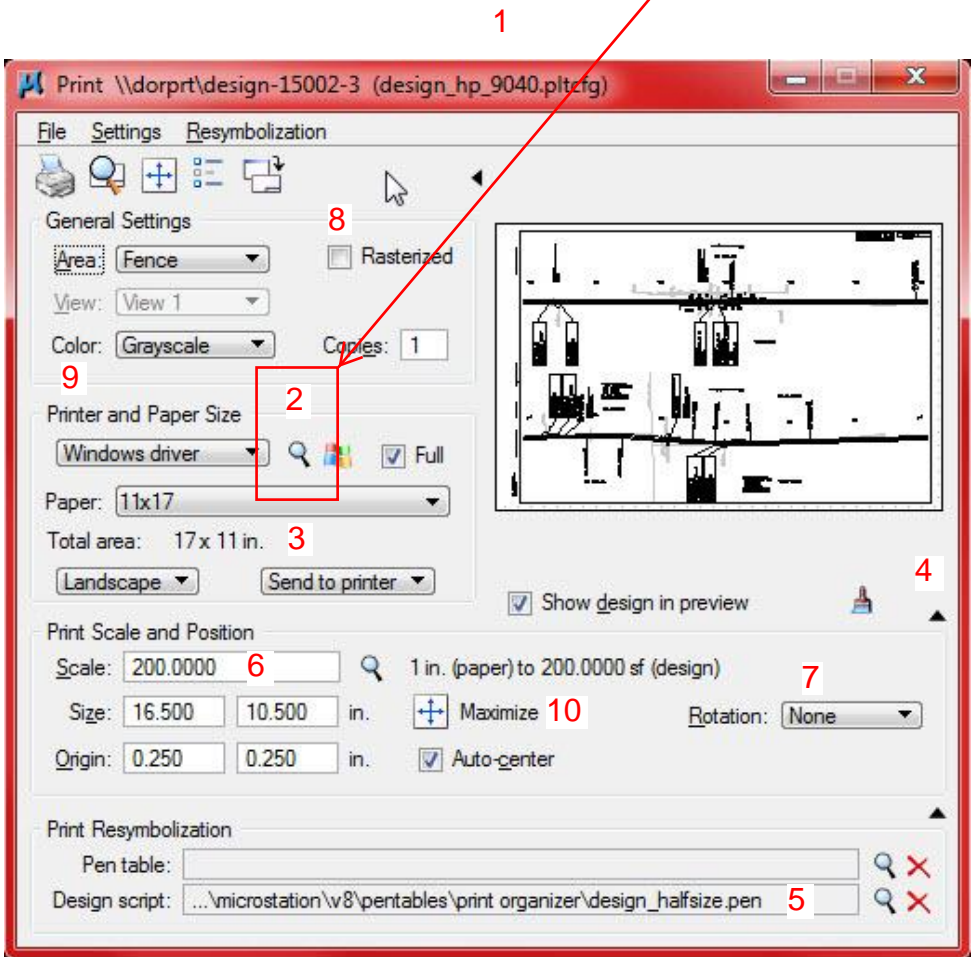
The MicroStation “Print” dialog will open.



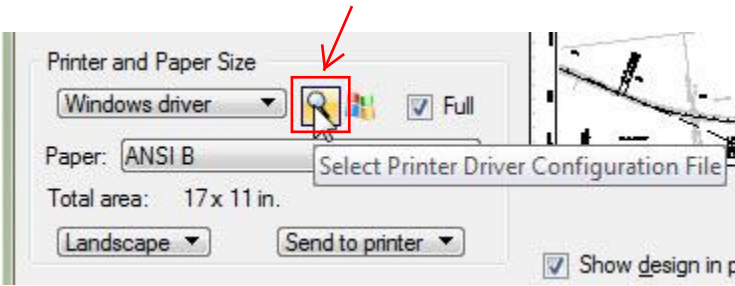
The MicroStation Print dialog box:

1. Plot queue and plot configuration file being used. (top of dialog box)
2. Select new plot configuration file. (see page 3)
3. Paper size. More sizes may be available.
4. Dialog expansion arrows.
5. Design Script File.
6. Scale. Key-in the scale.
7. Rotation.
8. Rasterized ... for printing transparent elements.
9. Color.
10. Maximize.

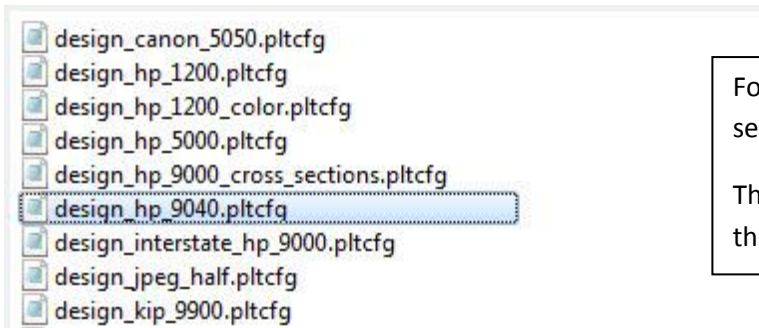
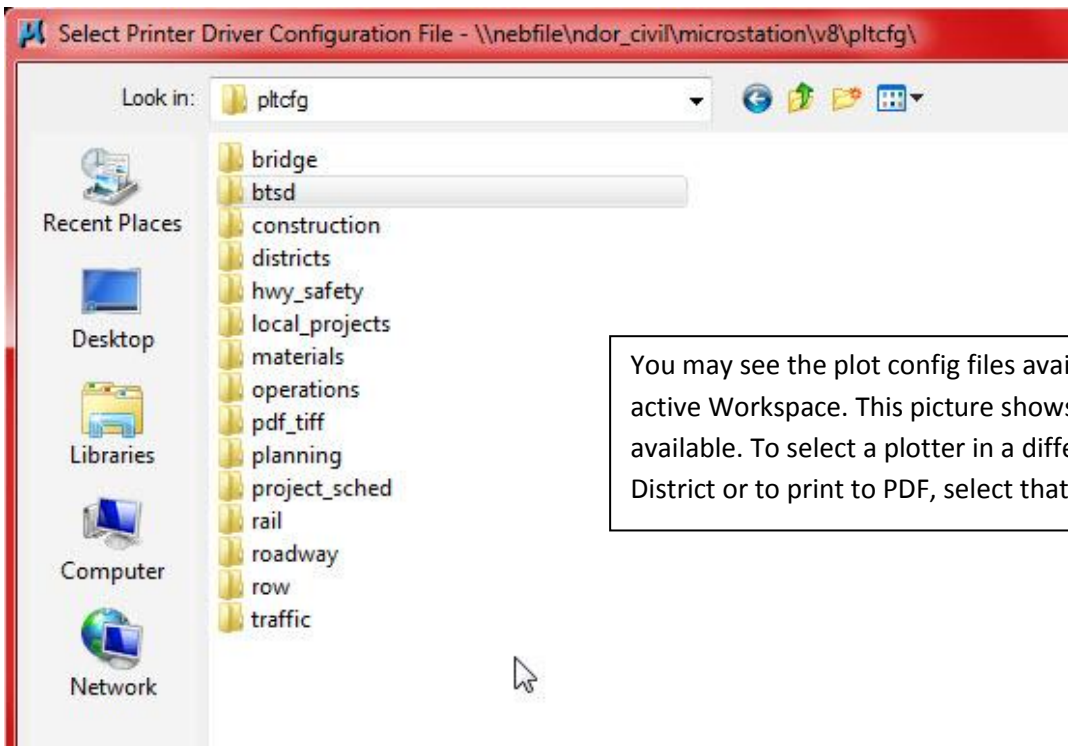
To change plotters ...
Click on the magnifying glass and select a different plot config file. See page 3.



To change plotters ... Click on Select Printer Driver Configuration file.



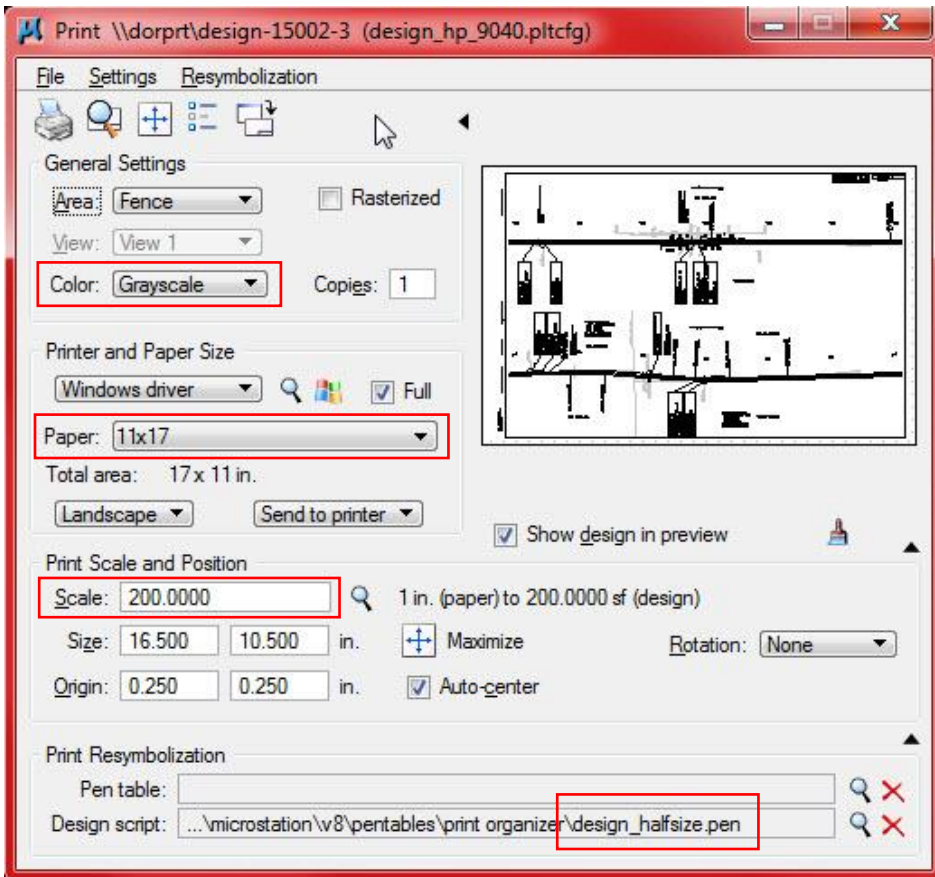
The list of Plot Configuration folders. Select your Division, Districts or PDF requirement.



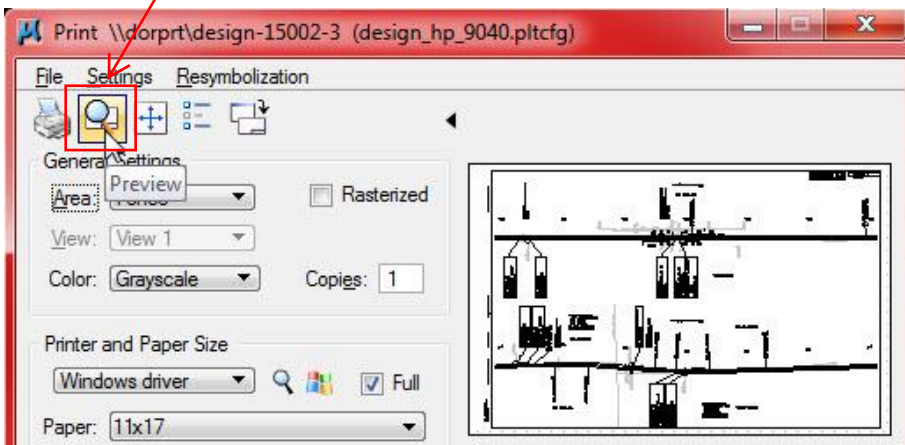
For example ... In the roadway folder, I am selecting the design_hp_9040.pltcfg.

This is the Hewlett-Packard 9040 plotter in the second floor print room.

We selected the “design_hp_9040.pltcfg” file which uses the “design-15002-3” printer on the “dorprt” server. The color is “Grayscale”, the paper size is “11x17” and the print scale is “200”. The Design script is “design_halfsize.pen” for correct resymbolization. Available paper sizes will be determined by the print drivers on the print server.

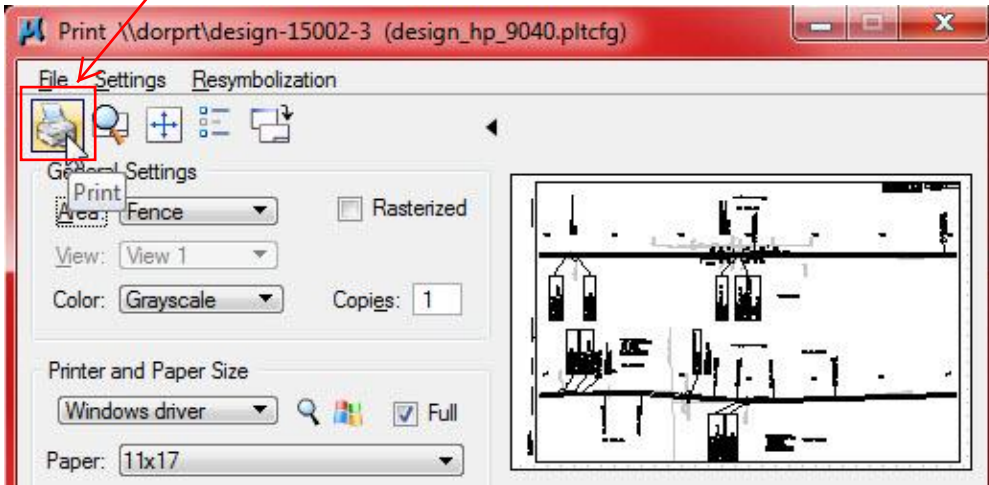


Click here for a Print Preview.

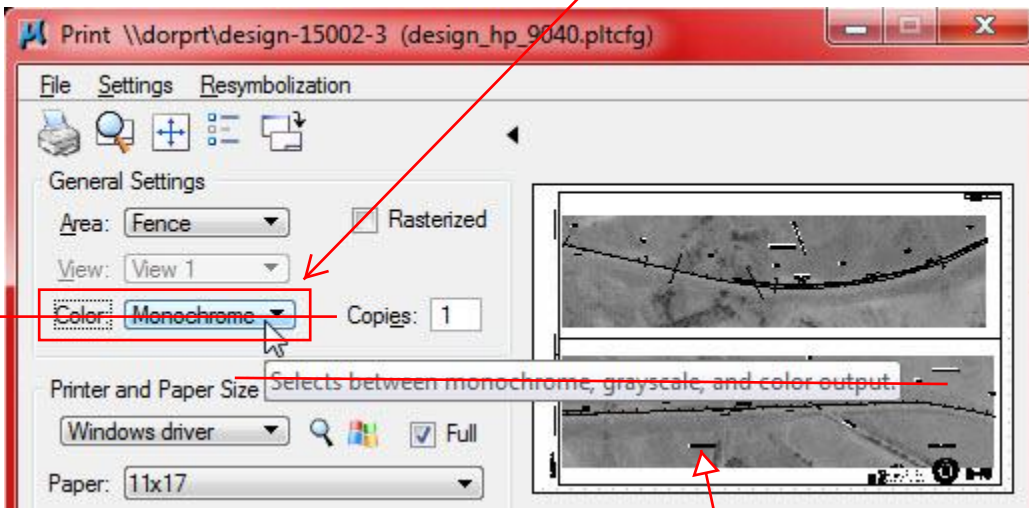


You can expand the Print Preview dialog box by clicking, holding and dragging the corners of the box.

Click here to Print.



~~To Print Aerial Sheets ... change Color to Monochrome.~~



Jan. 02, 2013
No need to change anything to plot these sheets. The problem with text plotting as a "black box" has been fixed.

Notes:

~~If this text plots black, copy the text into the sheet file, move it to level "notes aerial photo text" and put it right on top of the old text. Set the color to "monochrome."~~