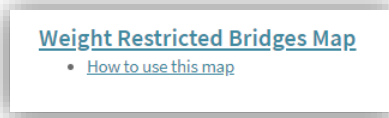


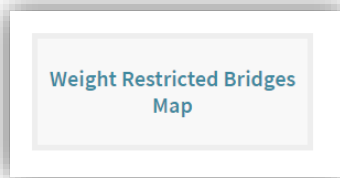
Posted Bridges Map Viewer

- Access the viewer

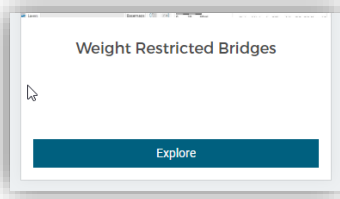
- <https://dot.nebraska.gov/business-center/bridge/>



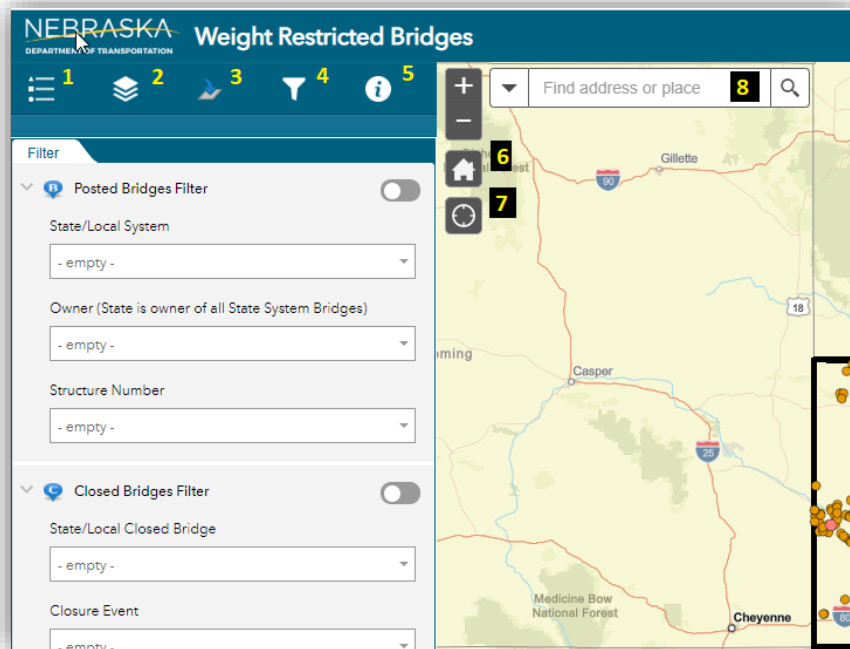
- <https://dot.nebraska.gov/travel/>



- <https://gis.ne.gov/portal/apps/sites/#/dot>

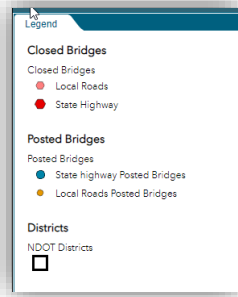


- The Tools



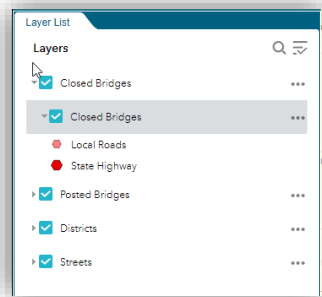
-

- 1 – Legend

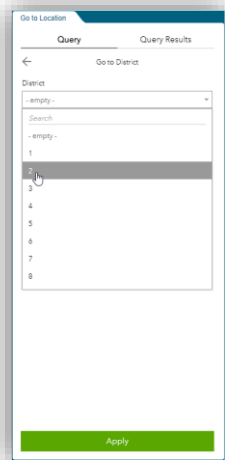
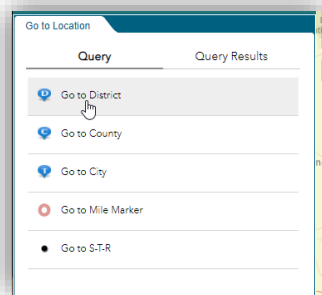


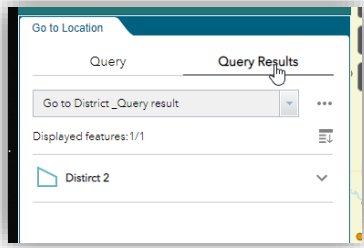
- 2 – Layer List

- Expand layers by clicking on the triangle

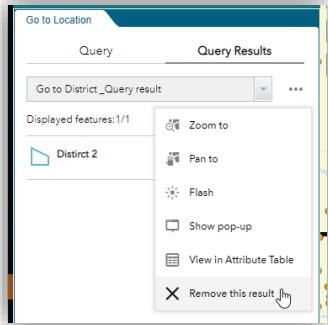


- 3 – Go To Location tools

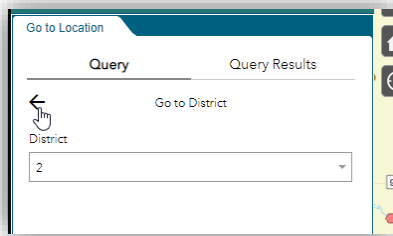




-
- This creates a layer in your layer list. The layer can be removed by clicking on the three dots

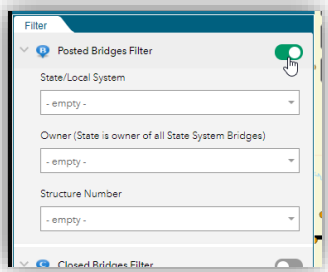


-
- Click on “Query” to search for another district, or click the back error to search by another feature type



- 4 – Filter Posted Bridges

- Turn on the filter by clicking the slider button



-
- Each box is limited by what is chosen in the other boxes. Set the box to empty if you do not wish to filter by that attribute.

- 5 – Additional Information



-
- 6 – Home map extent

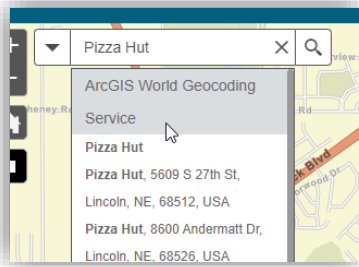
- Will set the map back to the initial extent.

- 7 – Your location (if browser is allowed access)

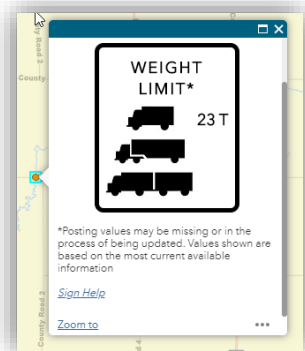
- If you allow your browser access to your location, this tool will set the map to your current location.

- 8 – ESRI Geocoding location search

- Uses ESRI service to search for places in the world.



- Click on a feature to get information about it



-