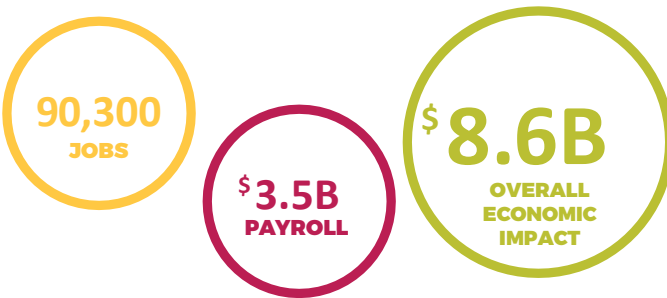


Why **Nebraska Aviation Counts!**



Nebraska's airport system makes valuable contributions to the communities it serves, providing access to the state 24 hours a day, seven days a week, 365 days a year. Nebraska's Airports are a dynamic part of the state's economy.

The Nebraska Department of Transportation's Aeronautics Division commissioned this Nebraska Aviation Economic Impact Study to measure the benefits provided by the state's airport system. This study shows how Nebraska airports are important economic engines.



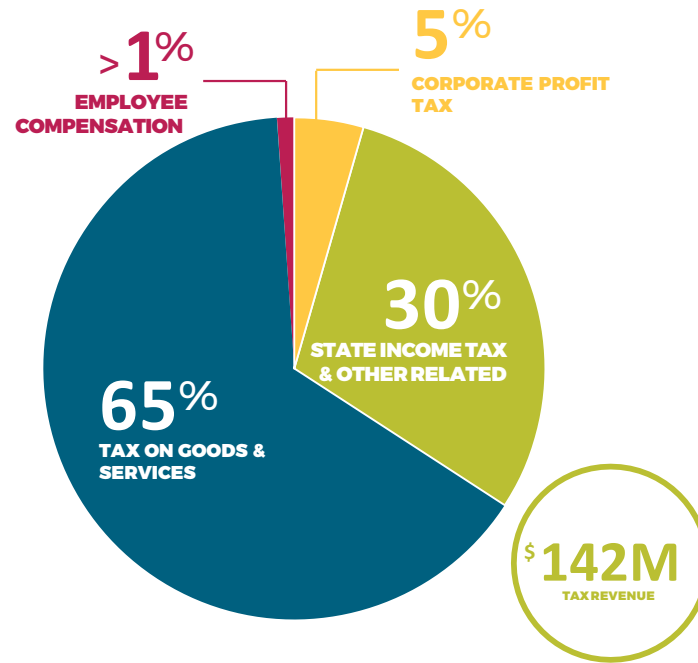
TOTAL VALUE OF AIRCRAFT IN GAGE COUNTY

\$5.5M

TOTAL VALUE OF AIRCRAFT IN NEBRASKA

\$920M

Airport-Related Taxes



In addition to the economic impact from jobs created and direct and indirect spending, the state receives a significant amount of tax revenue. The tax analysis conducted during the study examined revenue generated from the taxes paid by on-airport businesses, general aviation and commercial service visitors, and workers in airport-related activity. When combined, airport related activity generates an estimated \$142M in tax revenue on direct spending only for the state of Nebraska.

NEBRASKA

Good Life. Great Journey.

DEPARTMENT OF TRANSPORTATION

Nebraska Department of Transportation - Division of Aeronautics

3431 Aviation Road
Lincoln, Nebraska 68524
dot.nebraska.gov

THE ECONOMIC IMPACT OF



Beatrice Municipal Airport

THE OVERALL BENEFIT TO NEBRASKA OF THE BEATRICE MUNICIPAL AIRPORT



157
JOBS



\$4.8M
PAYROLL



\$10.4M
IMPACT

Study Methodology

The Nebraska Aviation Counts! team conducted the Study using guidelines set by the Federal Aviation Administration (FAA). Primary data was gathered by surveying airport managers, airport tenants, and visitors who traveled to Nebraska by commercial service or general aviation aircraft. While primary data is the core of the analysis, missing values and industry-specific information was calculated using secondary data sources.

The primary and secondary data collected for Nebraska airports provided the direct impacts driving the economic modeling effort for this study. The Impact Analysis for Planning (IMPLAN) modeling system was used to calculate aviation's total impact to the Nebraska economy.

Impact Types

Direct Impacts

Related to the provisions of aviation services, visitors' spending, or the activity of aviation-reliant businesses.

Indirect Impacts

Any portion of direct business revenue from affected businesses used to purchase goods or services within the state.

Induced Impacts

Any portion of direct or indirect revenues paid to on-airport workers and spent on goods and services within the state.

Total Economic Impacts

The total sum of both direct impacts and spin-off effects generated throughout a year.

Impact Measures



Jobs

Number of full-time equivalent (FTE) jobs. Part-time positions are considered half of one FTE worker with seasonal workers calculated proportionally to one full-time worker.



Payroll

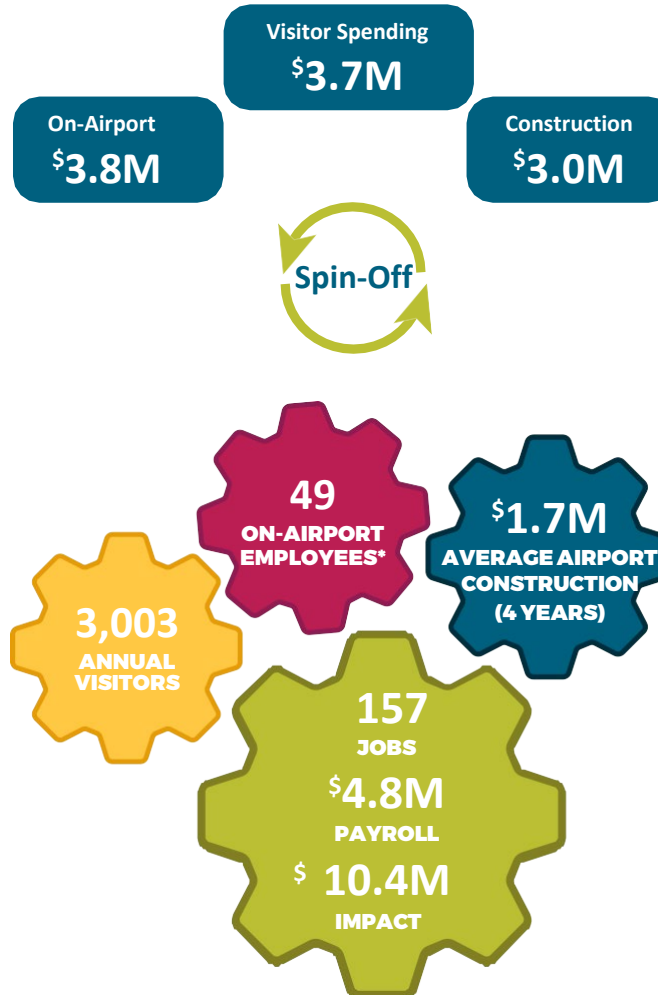
Amount of total annual salary, wages, and benefits paid to all FTEs calculated under jobs.



Economic Impact

Combined annual value of goods and services generated from any airport-related activity.

Beatrice Municipal Airport BIE



*On airport employees includes the employees of all tenants employed by aviation and non-aviation businesses on airport property. In Beatrice, this includes retail and hospitality businesses that lease property from the airport.



Considering a new project at the airport?
Try the new project calculator
nebraskaaviationcounts.com

