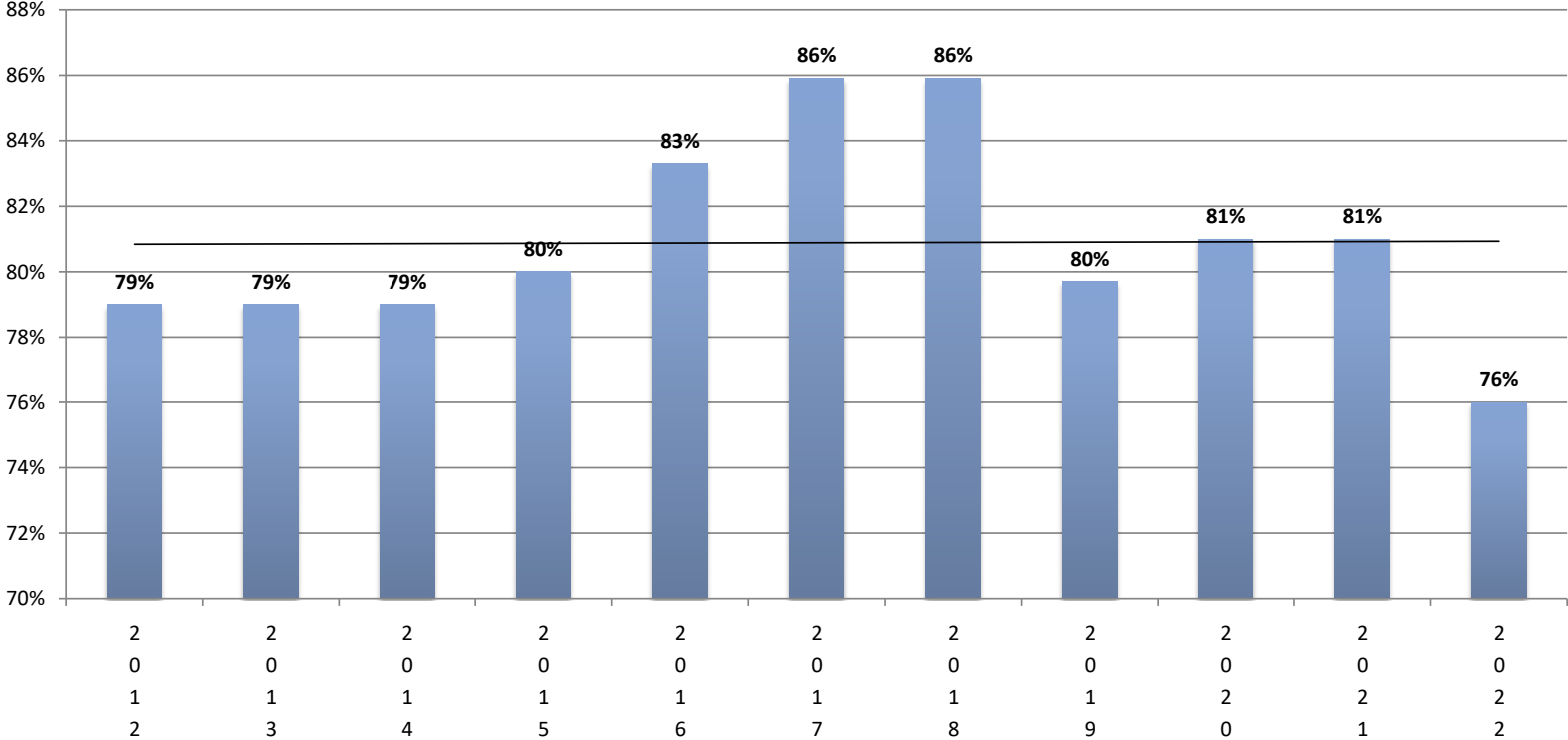


NEBRASKA SEATBELT USAGE RATES 2012 - 2022



- * September 6, 1985 Safety Belt Law (Driver/Secondary/\$25.00)
- * December 1, 1986 Safety Belt Law Repealed
- * January 1, 1993 New Safety Belt Law (Driver/Front Passenger/Secondary/\$25.00)