

NEBRASKA

Good Life. Great Journey.

DEPARTMENT OF TRANSPORTATION



December 8th, 2022

Pete Ricketts, Governor

Ms. Andre Aman, State Airfield Manager
NDOT / Aeronautics
3431 Aviation Road Suite 150
Lincoln, NE 68524

Subject: Scribner State Airfield
Scribner, Nebraska
PCI Survey

Dear Ms. Aman:

On September 7, 2022, representatives from the Nebraska Department of Transportation Aeronautics Division (NDOT) visited your airport and conducted a survey of the operational area pavement.

Enclosed is a report containing information on the inspection results. The report is based on the inspector's brief observations, and should not be used as the basis of actual construction or repairs without the consultation and advice of a registered Professional Engineer.

Runway 12/30 and the taxiway to 12/30 continue to deteriorate. The Scribner ALP is being updated, and will include a study of the runway and a preferred alternative for moving forward. All work on the runway, other than for safety reasons, should be suspended until the ALP study is complete.

The asphalt taxiways to runway 17/35 and the apron are well beyond their life expectancy. A pavement rehabilitation plan should be developed for these areas.

We encourage you to keep the pavement on a maintenance schedule to preserve the pavement for as many years as possible.

Please feel free to contact Aeronautics' Engineering Division if you have any questions with regard to the enclosed report, or if you would like to request assistance for any future needs.

Sincerely,
Nebraska Department of Transportation

Dave Lehnert

Liaison Technician II
Aeronautics Division

Nebraska Department of Transportation

OFFICE 402-471-7928, Director

dave.lehnert@ndot.nebraska.gov

MAILING ADDRESS

PO Box 94759
Lincoln, NE 68509-4759

PHYSICAL ADDRESS

1500 Highway 2
Lincoln, NE 68502

PHONE 402-471-4567

EMAIL NDOT.ContactUs@nebraska.gov

Aeronautics Division

3431 Aviation Road, Ste. 150
Lincoln, NE 68524-1800
OFFICE 402-471-2371
FAX 402-471-2906

Navigational Aids Office

Kearney Municipal Airport
5065 Airport Road
Kearney, NE 68847
OFFICE 308-865-5696
FAX 308-865-5697

dot.nebraska.gov

Scribner State Airfield

SUGGESTED MAINTENANCE, 2023-2025

Major rehabilitation projects are planned for the next two years, but as noted in the cover letter, the ALP update may change the direction any pavement construction projects.

The table below makes the assumption rehab will go forward as planned, and therefore includes estimated costs for annual maintenance plus reserves for the rehabilitation projects.

Concrete maintenance includes crack & joint sealing, patching, and panel replacement.

Asphalt maintenance includes crack sealing, patching, and full-depth repair.

Annual Maintenance / <i>Future Projects</i>	Year	Estimated Cost
Concrete, Asphalt pavement maintenance as needed / <i>12/30 & Txwy Rehab; Apron & Parallel Txwy Rehab</i>	2023	\$296,600
Concrete, Asphalt pavement maintenance as needed / <i>Apron & Parallel Txwy Rehab</i>	2024	\$18,700
Concrete, Asphalt pavement maintenance as needed	2025	\$3,600

Estimated three year total

\$318,900

(The above chart is offered only as a general guideline under ideal funding conditions; NDA understands local economies may not have the resources for the projected costs, and emphasizes the "**as needed**" nature of the suggested maintenance).

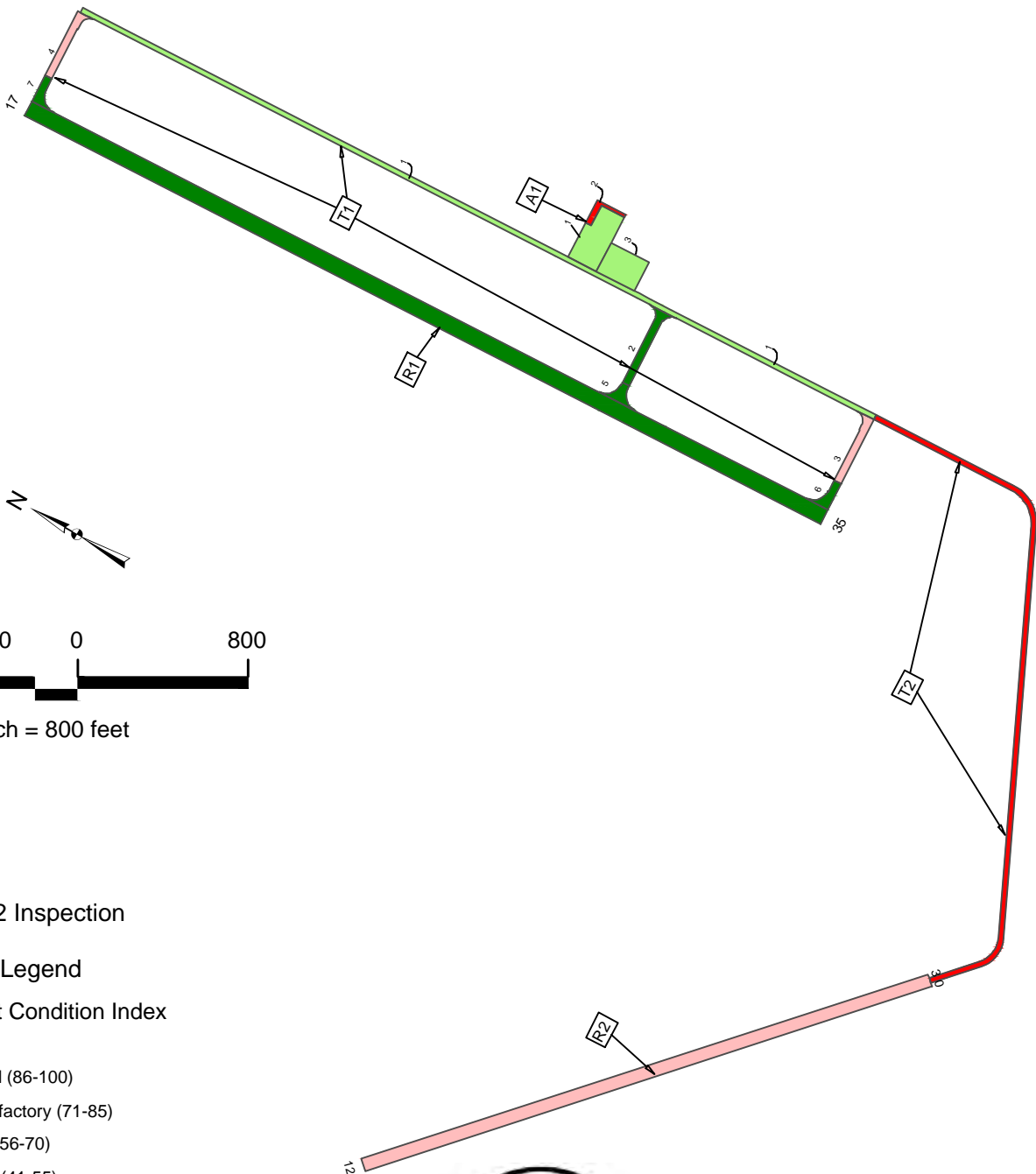
Please read carefully the "Pavement Maintenance Recommendations" of FAA Regional Paving Engineer, Doug Johnson, listed below;

It is the responsibility of the owners of the airport to:

Perform regular general maintenance activities and to immediately correct any situation that poses a safety hazard.

To prolong pavement life the following strategies should be implemented:

1. Conduct an aggressive campaign against weed growth. Vegetation growing in pavement cracks is very destructive and significantly increases the rate of pavement deterioration.
2. Implement a regular crack sealing and joint sealing program. Keeping water and debris out of the pavement system is a proven method for extending the life of the pavement system.
3. Closely monitor pavement loads. In addition to aircraft loads pay particular attention to: farming, construction, maintenance & snow removal and fueling equipment to make sure that they are only operating on pavements designed to accommodate these loads. Note this may require that you limit the size of snow removal equipment. Failure to restrict heavy loads to appropriate areas may result in the premature failure of airport pavements.
4. Maintain positive drainage away from pavements. Ensure that water can drain away from pavements and not held at the edge of pavements by allowing dirt to build up at the edge of pavements. Also make sure that edge drain outlets are clear and any drainage structures are clear.



2022 Inspection

Legend

Pavement Condition Index

PCI Scale

- Good (86-100)
- Satisfactory (71-85)
- Fair (56-70)
- Poor (41-55)
- Very Poor (26-40)
- Serious (11-25)
- Failed (0-10)



SCRIBNER STATE AIRFIELD
SCRIBNER, NEBRASKA
STATEWIDE PAVEMENT MANAGEMENT SYSTEM
NEBRASKA DOT / DIVISION OF AERONAUTICS

Pavement Database: *NDOT_PAVER_2021_4_1_*NetworkId: *SCB*

Branch ID	Section ID	Last Const. Date	Surface	Use	Rank	Lanes	True Area (SqFt)	Last Inspection Date	Age At Inspection	PCI
SCBA1	01	6/14/1991	APC	APRON	P	0	39,590.00	9/7/2022	31	75
SCBA1	02	7/1/1942	PCC	APRON	P	0	5,399.00	9/7/2022	80	26
SCBA1	03	6/14/1991	APC	APRON	P	0	30,000.00	9/7/2022	31	71
SCBR1	01	5/13/2016	PCC	RUNWAY	P	0	315,000.00	9/7/2022	6	99
SCBR2	01	7/1/1942	PCC	RUNWAY	S	0	168,000.00	9/7/2022	80	42
SCBT1	01	6/14/1991	APC	TAXIWAY	P	0	104,670.00	9/7/2022	31	71
SCBT1	02	7/1/1957	PCC	TAXIWAY	S	0	14,617.00	9/7/2022	65	90
SCBT1	03	7/1/1981	AC	TAXIWAY	P	0	12,622.00	9/7/2022	41	46
SCBT1	04	7/1/1981	AC	TAXIWAY	P	0	12,590.00	9/7/2022	41	48
SCBT1	05	5/13/2016	PCC	TAXIWAY	S	0	6,414.00	9/7/2022	6	94
SCBT1	06	5/13/2016	PCC	TAXIWAY	P	0	6,401.00	9/7/2022	6	100
SCBT1	07	5/13/2016	PCC	TAXIWAY	P	0	6,401.00	9/7/2022	6	97
SCBT2	01	7/1/1942	PCC	TAXIWAY	S	0	82,334.00	9/7/2022	80	32

Pavement Database: NDOT_PAVER_2021_4_1_

Age Category	Average Age at Inspection	Total Area (SqFt)	Number of Sections	Arithmetic Average PCI	Standard Deviation PCI	Weighted Average PCI
06-10	6	334,216.00	4	97.50	2.29	98.88
31-35	31	174,260.00	3	72.33	1.89	71.91
41-50	41	25,212.00	2	47.00	1.00	47.00
50+	76	270,350.00	4	47.50	25.19	41.23
ALL	39	804,038.00	13	68.54	25.82	72.03

Network:	SCB	Name:	SCRIBNER						
Branch:	SCBA1	Name:	APRON	Use:	APRON	Area:	74,989 SqFt		
Section:	01	of 3	From:	APRON1-02	To:	TW1	Last Const.:	6/14/1991	
Surface:	APC	Family:	NDA-APC-APRON	Zone:	E	Category:	C	Rank:	P
Area:	39,590 SqFt	Length:	285 Ft	Width:	150 Ft				
Slabs:	Slab Length:	Ft	Slab Width:	Ft	Joint Length:	Ft			
Shoulder:	Street Type:	Grade:	0	Lanes:	0				
Section Comments:	8 SUs								
Last Insp. Date:	9/7/2022	TotalSamples:	8	Surveyed:	5				
Conditions:	PCI: 75								
Inspection Comments:									
Sample Number:	001	Type:	R	Area:	5012.00 SqFt	PCI:	74		
Sample Comments:									
47	JT REF. CR	L	950.00	Ft					
48	L & T CR	L	177.00	Ft					
Sample Number:	003	Type:	R	Area:	5000.00 SqFt	PCI:	76		
Sample Comments:									
47	JT REF. CR	L	775.00	Ft					
48	L & T CR	L	188.00	Ft					
Sample Number:	004	Type:	R	Area:	5000.00 SqFt	PCI:	76		
Sample Comments:									
47	JT REF. CR	L	800.00	Ft					
48	L & T CR	L	237.00	Ft					
Sample Number:	006	Type:	R	Area:	5000.00 SqFt	PCI:	75		
Sample Comments:									
47	JT REF. CR	L	850.00	Ft					
48	L & T CR	L	216.00	Ft					
Sample Number:	008	Type:	R	Area:	4263.00 SqFt	PCI:	75		
Sample Comments:									
47	JT REF. CR	L	775.00	Ft					
48	L & T CR	L	340.00	Ft					

Re-Inspection Report

NDOT_PAVR_2021_4_1_

Generated Date 9/8/2022

Page 1 of 36

Network:	SCB	Name:	SCRIBNER		
Branch:	SCBA1	Name:	APRON	Use:	APRON
		Area:	74,989 SqFt		
Section:	03	of 3	From:	APRON1-01	To: TW1
			Last Const.:	6/14/1991	
Surface:	APC	Family:	NDA-APC-APRON	Zone:	E
		Category:	C		
Area:	30,000 SqFt	Length:	200 Ft	Width:	150 Ft
Slabs:		Slab Length:	Ft	Slab Width:	Ft
		Joint Length:	Ft		
Shoulder:		Street Type:		Grade:	0
		Lanes:	0		
Section Comments:	6 SUs				

Last Insp. Date: 9/7/2022 **TotalSamples:** 6 **Surveyed:** 5

Conditions: PCI: 71

Inspection Comments:

Sample Number: 001 **Type:** R **Area:** 5000.00 SqFt **PCI:** 73

Sample Comments:

47	JT REF. CR	L	1100.00	Ft
48	L & T CR	L	147.00	Ft

Sample Number: 002 **Type:** R **Area:** 5000.00 SqFt **PCI:** 70

Sample Comments:

47	JT REF. CR	L	875.00	Ft
48	L & T CR	L	206.00	Ft
52	RAVELING	L	3.00	SqFt
52	RAVELING	M	10.00	SqFt
52	RAVELING	H	5.00	SqFt

Sample Number: 003 **Type:** R **Area:** 5000.00 SqFt **PCI:** 75

Sample Comments:

47	JT REF. CR	L	900.00	Ft
48	L & T CR	L	134.00	Ft

Sample Number: 004 **Type:** R **Area:** 5000.00 SqFt **PCI:** 72

Sample Comments:

47	JT REF. CR	L	650.00	Ft
48	L & T CR	L	139.00	Ft
52	RAVELING	H	3.00	SqFt

Sample Number: 005 **Type:** R **Area:** 5000.00 SqFt **PCI:** 67

Sample Comments:

45	DEPRESSION	H	16.00	SqFt
47	JT REF. CR	L	700.00	Ft
48	L & T CR	L	236.00	Ft
48	L & T CR	M	19.00	Ft

Network:	SCB	Name:	SCRIBNER						
Branch:	SCBR1	Name:	RUNWAY 17/35	Use:	RUNWAY	Area:	315,000 SqFt		
Section:	01	of	1	From:	RW END 17	To:	RW END 35	Last Const.:	5/13/2016
Surface:	PCC	Family:	NDA-PCC-RUNWAY-C	Zone:	E	Category:	C	Rank:	P
Area:	315,000 SqFt	Length:	4,200 Ft	Width:	75 Ft				
Slabs:	3,360	Slab Length:	10 Ft	Slab Width:	9 Ft	Joint Length:	60,825 Ft		
Shoulder:		Street Type:		Grade:	0	Lanes:	0		
Section Comments:	168 SUs								
Last Insp. Date:	9/7/2022	TotalSamples:	168	Surveyed:	17				
Conditions:	PCI: 99								
Inspection Comments:									
Sample Number:	006	Type:	R	Area:	20.00 Slabs	PCI:	100		
Sample Comments:	<No Distress>								
Sample Number:	013	Type:	R	Area:	20.00 Slabs	PCI:	100		
Sample Comments:	<No Distress>								
Sample Number:	027	Type:	R	Area:	20.00 Slabs	PCI:	100		
Sample Comments:	<No Distress>								
Sample Number:	037	Type:	R	Area:	20.00 Slabs	PCI:	100		
Sample Comments:	<No Distress>								
Sample Number:	058	Type:	R	Area:	20.00 Slabs	PCI:	100		
Sample Comments:	<No Distress>								
Sample Number:	067	Type:	R	Area:	20.00 Slabs	PCI:	100		
Sample Comments:	<No Distress>								
Sample Number:	087	Type:	R	Area:	20.00 Slabs	PCI:	100		
Sample Comments:	<No Distress>								
Sample Number:	093	Type:	R	Area:	20.00 Slabs	PCI:	100		
Sample Comments:	<No Distress>								
Sample Number:	104	Type:	R	Area:	20.00 Slabs	PCI:	100		
Sample Comments:	<No Distress>								
Sample Number:	115	Type:	R	Area:	20.00 Slabs	PCI:	100		
Sample Comments:	<No Distress>								
Sample Number:	118	Type:	R	Area:	20.00 Slabs	PCI:	100		
Sample Comments:	<No Distress>								
Sample Number:	124	Type:	R	Area:	20.00 Slabs	PCI:	100		
Sample Comments:	<No Distress>								
Sample Number:	127	Type:	R	Area:	20.00 Slabs	PCI:	100		
Sample Comments:									

76	ASR	L	1.00	Slabs
76	ASR	L	1.00	Slabs
76	ASR	L	1.00	Slabs
76	ASR	L	1.00	Slabs

Sample Number: 022 **Type:** R **Area:** 20.00 Slabs **PCI:** 36

Sample Comments:

62	CORNER BREAK	L	1.00	Slabs
63	LINEAR CR	L	1.00	Slabs
63	LINEAR CR	L	1.00	Slabs
63	LINEAR CR	L	1.00	Slabs
63	LINEAR CR	L	1.00	Slabs
63	LINEAR CR	M	1.00	Slabs
72	SHAT. SLAB	L	1.00	Slabs
72	SHAT. SLAB	H	1.00	Slabs
74	JOINT SPALL	M	1.00	Slabs
76	ASR	L	1.00	Slabs
76	ASR	L	1.00	Slabs
76	ASR	L	1.00	Slabs
76	ASR	L	1.00	Slabs
76	ASR	L	1.00	Slabs
76	ASR	L	1.00	Slabs
76	ASR	L	1.00	Slabs
76	ASR	L	1.00	Slabs
76	ASR	L	1.00	Slabs
76	ASR	L	1.00	Slabs
76	ASR	L	1.00	Slabs
76	ASR	L	1.00	Slabs
76	ASR	L	1.00	Slabs
76	ASR	L	1.00	Slabs
76	ASR	L	1.00	Slabs
76	ASR	L	1.00	Slabs
76	ASR	L	1.00	Slabs
76	ASR	L	1.00	Slabs
76	ASR	L	1.00	Slabs
76	ASR	L	1.00	Slabs
76	ASR	L	1.00	Slabs
76	ASR	L	1.00	Slabs
76	ASR	L	1.00	Slabs

Sample Number: 025 **Type:** R **Area:** 20.00 Slabs **PCI:** 60

Sample Comments:

62	CORNER BREAK	L	1.00	Slabs
63	LINEAR CR	L	1.00	Slabs
63	LINEAR CR	L	1.00	Slabs
63	LINEAR CR	L	1.00	Slabs
63	LINEAR CR	L	1.00	Slabs
66	SMALL PATCH	L	1.00	Slabs
74	JOINT SPALL	H	1.00	Slabs
76	ASR	L	1.00	Slabs
76	ASR	L	1.00	Slabs
76	ASR	L	1.00	Slabs
76	ASR	L	1.00	Slabs
76	ASR	L	1.00	Slabs
76	ASR	L	1.00	Slabs
76	ASR	L	1.00	Slabs
76	ASR	L	1.00	Slabs
76	ASR	L	1.00	Slabs
76	ASR	L	1.00	Slabs
76	ASR	L	1.00	Slabs
76	ASR	L	1.00	Slabs
76	ASR	L	1.00	Slabs
76	ASR	L	1.00	Slabs
76	ASR	L	1.00	Slabs
76	ASR	L	1.00	Slabs
76	ASR	L	1.00	Slabs
76	ASR	L	1.00	Slabs
76	ASR	L	1.00	Slabs
76	ASR	L	1.00	Slabs
76	ASR	L	1.00	Slabs
76	ASR	L	1.00	Slabs
76	ASR	L	1.00	Slabs
76	ASR	L	1.00	Slabs
76	ASR	L	1.00	Slabs
76	ASR	L	1.00	Slabs
76	ASR	L	1.00	Slabs

Sample Number: 027 **Type:** R **Area:** 20.00 Slabs **PCI:** 44

Sample Comments:

63	LINEAR CR	L	1.00	Slabs
63	LINEAR CR	L	1.00	Slabs

63	LINEAR CR	M	1.00	Slabs
67	LARGE PATCH	L	1.00	Slabs
67	LARGE PATCH	L	1.00	Slabs
67	LARGE PATCH	H	1.00	Slabs
67	LARGE PATCH	H	1.00	Slabs
76	ASR	L	1.00	Slabs
76	ASR	L	1.00	Slabs
76	ASR	L	1.00	Slabs
76	ASR	L	1.00	Slabs
76	ASR	L	1.00	Slabs
76	ASR	L	1.00	Slabs
76	ASR	L	1.00	Slabs
76	ASR	L	1.00	Slabs
76	ASR	L	1.00	Slabs
76	ASR	L	1.00	Slabs
76	ASR	L	1.00	Slabs
76	ASR	L	1.00	Slabs
76	ASR	L	1.00	Slabs
76	ASR	L	1.00	Slabs
76	ASR	L	1.00	Slabs
76	ASR	L	1.00	Slabs
76	ASR	L	1.00	Slabs
76	ASR	L	1.00	Slabs
76	ASR	L	1.00	Slabs
76	ASR	L	1.00	Slabs
76	ASR	L	1.00	Slabs
76	ASR	L	1.00	Slabs

Sample Number: 029 **Type:** R **Area:** 20.00 Slabs **PCI:** 62

Sample Comments:

63	LINEAR CR	L	1.00	Slabs
63	LINEAR CR	L	1.00	Slabs
63	LINEAR CR	M	1.00	Slabs
75	CORNER SPALL	L	1.00	Slabs
75	CORNER SPALL	M	1.00	Slabs
76	ASR	L	1.00	Slabs
76	ASR	L	1.00	Slabs
76	ASR	L	1.00	Slabs
76	ASR	L	1.00	Slabs
76	ASR	L	1.00	Slabs
76	ASR	L	1.00	Slabs
76	ASR	L	1.00	Slabs
76	ASR	L	1.00	Slabs
76	ASR	L	1.00	Slabs
76	ASR	L	1.00	Slabs
76	ASR	L	1.00	Slabs
76	ASR	L	1.00	Slabs
76	ASR	L	1.00	Slabs
76	ASR	L	1.00	Slabs
76	ASR	L	1.00	Slabs
76	ASR	L	1.00	Slabs
76	ASR	L	1.00	Slabs
76	ASR	L	1.00	Slabs
76	ASR	L	1.00	Slabs

Sample Number: 030 **Type:** R **Area:** 20.00 Slabs **PCI:** 46

Sample Comments:

63	LINEAR CR	L	1.00	Slabs
63	LINEAR CR	L	1.00	Slabs
63	LINEAR CR	L	1.00	Slabs
63	LINEAR CR	L	1.00	Slabs
63	LINEAR CR	L	1.00	Slabs
63	LINEAR CR	L	1.00	Slabs
63	LINEAR CR	L	1.00	Slabs
63	LINEAR CR	M	1.00	Slabs
66	SMALL PATCH	H	1.00	Slabs
72	SHAT. SLAB	M	1.00	Slabs
75	CORNER SPALL	L	1.00	Slabs
76	ASR	L	1.00	Slabs
76	ASR	L	1.00	Slabs
76	ASR	L	1.00	Slabs
76	ASR	L	1.00	Slabs

76	ASR	L	1.00	Slabs
76	ASR	L	1.00	Slabs
76	ASR	L	1.00	Slabs
76	ASR	L	1.00	Slabs
76	ASR	L	1.00	Slabs
76	ASR	L	1.00	Slabs
76	ASR	L	1.00	Slabs
76	ASR	L	1.00	Slabs
76	ASR	L	1.00	Slabs
76	ASR	L	1.00	Slabs
76	ASR	L	1.00	Slabs
76	ASR	L	1.00	Slabs
76	ASR	L	1.00	Slabs
76	ASR	L	1.00	Slabs
76	ASR	L	1.00	Slabs

Sample Number: 042 **Type:** R **Area:** 20.00 Slabs **PCI:** 25

Sample Comments:

62	CORNER BREAK	L	1.00	Slabs
63	LINEAR CR	L	1.00	Slabs
63	LINEAR CR	L	1.00	Slabs
63	LINEAR CR	L	1.00	Slabs
63	LINEAR CR	L	1.00	Slabs
72	SHAT. SLAB	H	1.00	Slabs
74	JOINT SPALL	L	1.00	Slabs
74	JOINT SPALL	L	1.00	Slabs
74	JOINT SPALL	M	1.00	Slabs
74	JOINT SPALL	H	1.00	Slabs
74	JOINT SPALL	H	1.00	Slabs
74	JOINT SPALL	H	1.00	Slabs
75	CORNER SPALL	L	1.00	Slabs
75	CORNER SPALL	L	1.00	Slabs
75	CORNER SPALL	M	1.00	Slabs
75	CORNER SPALL	H	1.00	Slabs
76	ASR	L	1.00	Slabs
76	ASR	L	1.00	Slabs
76	ASR	L	1.00	Slabs
76	ASR	L	1.00	Slabs
76	ASR	L	1.00	Slabs
76	ASR	L	1.00	Slabs
76	ASR	L	1.00	Slabs
76	ASR	L	1.00	Slabs
76	ASR	L	1.00	Slabs
76	ASR	L	1.00	Slabs
76	ASR	L	1.00	Slabs
76	ASR	L	1.00	Slabs
76	ASR	L	1.00	Slabs
76	ASR	L	1.00	Slabs
76	ASR	L	1.00	Slabs
76	ASR	L	1.00	Slabs

Sample Number: 044 **Type:** R **Area:** 20.00 Slabs **PCI:** 39

Sample Comments:

62	CORNER BREAK	L	1.00	Slabs
62	CORNER BREAK	L	1.00	Slabs
62	CORNER BREAK	H	1.00	Slabs
63	LINEAR CR	L	1.00	Slabs
63	LINEAR CR	M	1.00	Slabs
67	LARGE PATCH	M	1.00	Slabs
74	JOINT SPALL	L	1.00	Slabs
74	JOINT SPALL	L	1.00	Slabs
74	JOINT SPALL	L	1.00	Slabs
74	JOINT SPALL	M	1.00	Slabs
74	JOINT SPALL	M	1.00	Slabs
74	JOINT SPALL	M	1.00	Slabs
74	JOINT SPALL	M	1.00	Slabs
74	JOINT SPALL	M	1.00	Slabs
74	JOINT SPALL	H	1.00	Slabs
75	CORNER SPALL	L	1.00	Slabs
75	CORNER SPALL	L	1.00	Slabs
75	CORNER SPALL	L	1.00	Slabs

76	ASR	L	1.00	Slabs
76	ASR	L	1.00	Slabs
76	ASR	L	1.00	Slabs
76	ASR	L	1.00	Slabs
76	ASR	L	1.00	Slabs
76	ASR	L	1.00	Slabs
76	ASR	L	1.00	Slabs
76	ASR	L	1.00	Slabs
76	ASR	L	1.00	Slabs
76	ASR	L	1.00	Slabs
76	ASR	L	1.00	Slabs
76	ASR	L	1.00	Slabs
76	ASR	L	1.00	Slabs
76	ASR	L	1.00	Slabs
76	ASR	L	1.00	Slabs
76	ASR	L	1.00	Slabs

Sample Number: 046 **Type:** R **Area:** 20.00 Slabs **PCI:** 36

Sample Comments:

62	CORNER BREAK	M	1.00	Slabs
62	CORNER BREAK	M	1.00	Slabs
67	LARGE PATCH	H	1.00	Slabs
70	SCALING	L	1.00	Slabs
70	SCALING	L	1.00	Slabs
70	SCALING	L	1.00	Slabs
70	SCALING	L	1.00	Slabs
72	SHAT. SLAB	H	1.00	Slabs
74	JOINT SPALL	L	1.00	Slabs
74	JOINT SPALL	M	1.00	Slabs
74	JOINT SPALL	M	1.00	Slabs
75	CORNER SPALL	L	1.00	Slabs
75	CORNER SPALL	M	1.00	Slabs
76	ASR	L	1.00	Slabs
76	ASR	L	1.00	Slabs
76	ASR	L	1.00	Slabs
76	ASR	L	1.00	Slabs
76	ASR	L	1.00	Slabs
76	ASR	L	1.00	Slabs
76	ASR	L	1.00	Slabs
76	ASR	L	1.00	Slabs
76	ASR	L	1.00	Slabs
76	ASR	L	1.00	Slabs
76	ASR	L	1.00	Slabs
76	ASR	L	1.00	Slabs
76	ASR	L	1.00	Slabs
76	ASR	L	1.00	Slabs

Sample Number: 049 **Type:** R **Area:** 20.00 Slabs **PCI:** 46

Sample Comments:

63	LINEAR CR	L	1.00	Slabs
63	LINEAR CR	L	1.00	Slabs
63	LINEAR CR	L	1.00	Slabs
63	LINEAR CR	L	1.00	Slabs
63	LINEAR CR	L	1.00	Slabs
63	LINEAR CR	L	1.00	Slabs
63	LINEAR CR	L	1.00	Slabs
63	LINEAR CR	L	1.00	Slabs
63	LINEAR CR	L	1.00	Slabs
63	LINEAR CR	M	1.00	Slabs
72	SHAT. SLAB	M	1.00	Slabs
74	JOINT SPALL	L	1.00	Slabs
74	JOINT SPALL	M	1.00	Slabs
76	ASR	L	1.00	Slabs
76	ASR	L	1.00	Slabs
76	ASR	L	1.00	Slabs
76	ASR	L	1.00	Slabs

76	ASR	L	1.00	Slabs
76	ASR	L	1.00	Slabs
76	ASR	L	1.00	Slabs
76	ASR	L	1.00	Slabs
76	ASR	L	1.00	Slabs
76	ASR	L	1.00	Slabs
76	ASR	L	1.00	Slabs
76	ASR	L	1.00	Slabs
76	ASR	L	1.00	Slabs
76	ASR	L	1.00	Slabs
76	ASR	L	1.00	Slabs
76	ASR	L	1.00	Slabs
76	ASR	L	1.00	Slabs
76	ASR	L	1.00	Slabs
76	ASR	L	1.00	Slabs

Sample Number: 050 **Type:** R **Area:** 20.00 Slabs **PCI:** 39

Sample Comments:

63	LINEAR CR	L	1.00	Slabs
63	LINEAR CR	L	1.00	Slabs
63	LINEAR CR	L	1.00	Slabs
63	LINEAR CR	L	1.00	Slabs
63	LINEAR CR	L	1.00	Slabs
63	LINEAR CR	L	1.00	Slabs
63	LINEAR CR	L	1.00	Slabs
63	LINEAR CR	M	1.00	Slabs
63	LINEAR CR	M	1.00	Slabs
74	JOINT SPALL	M	1.00	Slabs
74	JOINT SPALL	M	1.00	Slabs
74	JOINT SPALL	H	1.00	Slabs
75	CORNER SPALL	L	1.00	Slabs
75	CORNER SPALL	M	1.00	Slabs
75	CORNER SPALL	H	1.00	Slabs
76	ASR	L	1.00	Slabs
76	ASR	L	1.00	Slabs
76	ASR	L	1.00	Slabs
76	ASR	L	1.00	Slabs
76	ASR	L	1.00	Slabs
76	ASR	L	1.00	Slabs
76	ASR	L	1.00	Slabs
76	ASR	L	1.00	Slabs
76	ASR	L	1.00	Slabs
76	ASR	L	1.00	Slabs
76	ASR	L	1.00	Slabs
76	ASR	L	1.00	Slabs
76	ASR	L	1.00	Slabs
76	ASR	L	1.00	Slabs
76	ASR	L	1.00	Slabs
76	ASR	L	1.00	Slabs
76	ASR	L	1.00	Slabs

Sample Number: 052 **Type:** R **Area:** 20.00 Slabs **PCI:** 46

Sample Comments:

63	LINEAR CR	L	1.00	Slabs
63	LINEAR CR	L	1.00	Slabs
63	LINEAR CR	L	1.00	Slabs
63	LINEAR CR	L	1.00	Slabs
63	LINEAR CR	L	1.00	Slabs
63	LINEAR CR	M	1.00	Slabs
70	SCALING	L	1.00	Slabs
74	JOINT SPALL	M	1.00	Slabs
74	JOINT SPALL	M	1.00	Slabs
74	JOINT SPALL	M	1.00	Slabs
74	JOINT SPALL	H	1.00	Slabs
75	CORNER SPALL	L	1.00	Slabs
75	CORNER SPALL	H	1.00	Slabs
76	ASR	L	1.00	Slabs
76	ASR	L	1.00	Slabs
76	ASR	L	1.00	Slabs

Network:	SCB	Name:	SCRIBNER						
Branch:	SCBT1	Name:	TAXIWAYS TO 17/35	Use:	TAXIWAY	Area:	163,715 SqFt		
Section:	01	of 7	From:	TW2	To:	TW1-04	Last Const.: 6/14/1991		
Surface:	APC	Family:	NDA-APC-TAXIWAY	Zone:	E	Category:	C	Rank:	P
Area:	104,670 SqFt	Length:	4,188 Ft	Width:	25 Ft				
Slabs:	Slab Length:	Ft	Slab Width:	Ft	Joint Length:	Ft			
Shoulder:	Street Type:	Grade:	0	Lanes:	0				
Section Comments:									
Last Insp. Date:	9/7/2022	TotalSamples:	21	Surveyed:	6				
Conditions:	PCI: 71	Inspection Comments:							
Sample Number:	001	Type:	R	Area:	5000.00 SqFt	PCI:	72		
Sample Comments:									
47	JT REF. CR	L	525.00 Ft						
48	L & T CR	L	488.00 Ft						
Sample Number:	004	Type:	R	Area:	5000.00 SqFt	PCI:	72		
Sample Comments:									
47	JT REF. CR	L	525.00 Ft						
48	L & T CR	L	488.00 Ft						
Sample Number:	006	Type:	R	Area:	5000.00 SqFt	PCI:	71		
Sample Comments:									
47	JT REF. CR	L	550.00 Ft						
48	L & T CR	L	511.00 Ft						
Sample Number:	014	Type:	R	Area:	5000.00 SqFt	PCI:	72		
Sample Comments:									
47	JT REF. CR	L	550.00 Ft						
48	L & T CR	L	507.00 Ft						
Sample Number:	016	Type:	R	Area:	5000.00 SqFt	PCI:	72		
Sample Comments:									
47	JT REF. CR	L	550.00 Ft						
48	L & T CR	L	508.00 Ft						
Sample Number:	020	Type:	R	Area:	5000.00 SqFt	PCI:	69		
Sample Comments:									
47	JT REF. CR	L	550.00 Ft						
48	L & T CR	L	423.00 Ft						
48	L & T CR	M	16.00 Ft						

Network:	SCB	Name:	SCRIBNER						
Branch:	SCBT1	Name:	TAXIWAYS TO 17/35	Use:	TAXIWAY	Area:	163,715 SqFt		
Section:	02	of 7	From:	TW1-05	To:	TW1-01	Last Const.: 7/1/1957		
Surface:	PCC	Family:	NDA-PCC-TAXIWAY-C	Zone:	E	Category:	C	Rank:	S
Area:	14,617 SqFt	Length:	382 Ft	Width:	35 Ft				
Slabs:	102	Slab Length:	14 Ft	Slab Width:	10 Ft	Joint Length:	1,862 Ft		
Shoulder:		Street Type:		Grade:	0	Lanes:	0		
Section Comments:	6 SUs								
Last Insp. Date:	9/7/2022	TotalSamples:	6	Surveyed:	5				
Conditions:	PCI: 90								
Inspection Comments:									
Sample Number:	001	Type:	R	Area:	20.00 Slabs	PCI:	89		
Sample Comments:									
62	CORNER BREAK	L	1.00	Slabs					
63	LINEAR CR	L	1.00	Slabs					
70	SCALING	L	1.00	Slabs					
70	SCALING	L	1.00	Slabs					
70	SCALING	L	1.00	Slabs					
70	SCALING	L	1.00	Slabs					
70	SCALING	L	1.00	Slabs					
70	SCALING	L	1.00	Slabs					
70	SCALING	L	1.00	Slabs					
Sample Number:	003	Type:	R	Area:	14.00 Slabs	PCI:	88		
Sample Comments:									
62	CORNER BREAK	L	1.00	Slabs					
63	LINEAR CR	L	1.00	Slabs					
Sample Number:	004	Type:	R	Area:	20.00 Slabs	PCI:	97		
Sample Comments:									
70	SCALING	L	1.00	Slabs					
70	SCALING	L	1.00	Slabs					
70	SCALING	L	1.00	Slabs					
70	SCALING	L	1.00	Slabs					
70	SCALING	L	1.00	Slabs					
Sample Number:	005	Type:	R	Area:	20.00 Slabs	PCI:	85		
Sample Comments:									
62	CORNER BREAK	L	1.00	Slabs					
63	LINEAR CR	L	1.00	Slabs					
63	LINEAR CR	L	1.00	Slabs					
63	LINEAR CR	L	1.00	Slabs					
Sample Number:	006	Type:	R	Area:	14.00 Slabs	PCI:	89		
Sample Comments:									
63	LINEAR CR	L	1.00	Slabs					
63	LINEAR CR	L	1.00	Slabs					

Network: SCB **Name:** SCRIBNER

Branch: SCBT1 **Name:** TAXIWAYS TO 17/35 **Use:** TAXIWAY **Area:** 163,715 SqFt

Section: 03 of 7 **From:** TW1-06 **To:** TW1-01 **Last Const.:** 7/1/1981

Surface: AC **Family:** NDA-AC-TAXIWAY **Zone:** E **Category:** C **Rank:** P

Area: 12,622 SqFt **Length:** 337 Ft **Width:** 35 Ft

Slabs: **Slab Length:** Ft **Slab Width:** Ft **Joint Length:** Ft

Shoulder: **Street Type:** **Grade:** 0 **Lanes:** 0

Section Comments: 3 SU

Last Insp. Date: 9/7/2022 **TotalSamples:** 3 **Surveyed:** 3

Conditions: PCI: 46

Inspection Comments:

Sample Number: 001 **Type:** R **Area:** 5232.00 SqFt **PCI:** 50

Sample Comments:

41 ALLIGATOR CR L 240.00 SqFt

43 BLOCK CR L 520.00 SqFt

48 L & T CR L 224.00 Ft

57 WEATHERING L 5232.00 SqFt

Sample Number: 002 **Type:** R **Area:** 4970.00 SqFt **PCI:** 42

Sample Comments:

41 ALLIGATOR CR L 300.00 SqFt

48 L & T CR L 250.00 Ft

48 L & T CR M 42.00 Ft

48 L & T CR H 18.00 Ft

57 WEATHERING L 4970.00 SqFt

Sample Number: 003 **Type:** R **Area:** 1881.00 SqFt **PCI:** 45

Sample Comments:

41 ALLIGATOR CR L 134.00 SqFt

48 L & T CR L 33.00 Ft

48 L & T CR M 5.00 Ft

57 WEATHERING L 1881.00 SqFt

Network:	SCB	Name:	SCRIBNER				
Branch:	SCBT1	Name:	TAXIWAYS TO 17/35	Use:	TAXIWAY	Area:	163,715 SqFt
Section:	04	of 7	From:	TW1-07	To:	TW1-01	Last Const.: 7/1/1981
Surface:	AC	Family:	NDA-AC-TAXIWAY	Zone:	E	Category:	C
Area:	12,590 SqFt	Length:	337 Ft	Width:	35 Ft	Rank:	P
Slabs:	Slab Length:	Ft	Slab Width:	Ft	Joint Length:	Ft	
Shoulder:	Street Type:	Grade:	0	Lanes:	0		
Section Comments:	3 SU						
Last Insp. Date:	9/7/2022	TotalSamples:	3	Surveyed:	3		
Conditions:	PCI: 48						
Inspection Comments:							
Sample Number:	001	Type:	R	Area:	5000.00 SqFt	PCI:	48
Sample Comments:							
41	ALLIGATOR CR	L	240.00	SqFt			
43	BLOCK CR	L	3000.00	SqFt			
48	L & T CR	M	35.00	Ft			
57	WEATHERING	L	5000.00	SqFt			
Sample Number:	002	Type:	R	Area:	4998.00 SqFt	PCI:	43
Sample Comments:							
41	ALLIGATOR CR	L	300.00	SqFt			
43	BLOCK CR	L	4500.00	SqFt			
48	L & T CR	M	35.00	Ft			
57	WEATHERING	L	4900.00	SqFt			
Sample Number:	003	Type:	R	Area:	2056.00 SqFt	PCI:	60
Sample Comments:							
43	BLOCK CR	L	1250.00	SqFt			
48	L & T CR	L	112.00	Ft			
57	WEATHERING	L	2056.00	SqFt			

Network:	SCB	Name:	SCRIBNER						
Branch:	SCBT1	Name:	TAXIWAYS TO 17/35	Use:	TAXIWAY	Area:	163,715 SqFt		
Section:	05	of 7	From:	RW 17/35	To:	TW1-02	Last Const.:	5/13/2016	
Surface:	PCC	Family:	NDA-PCC-TAXIWAY-C	Zone:	E	Category:	C	Rank:	S
Area:	6,414 SqFt	Length:	93 Ft	Width:	35 Ft				
Slabs:	76	Slab Length:	10 Ft	Slab Width:	9 Ft	Joint Length:	566 Ft		
Shoulder:		Street Type:		Grade:	0	Lanes:	0		
Section Comments:	3 SU								
Last Insp. Date:	9/7/2022	TotalSamples:	3	Surveyed:	3				
Conditions:	PCI: 94								
Inspection Comments:									
Sample Number:	001	Type:	R	Area:	28.00 Slabs	PCI:	100		
Sample Comments:									
<No Distress>									
Sample Number:	002	Type:	R	Area:	24.00 Slabs	PCI:	88		
Sample Comments:									
65	JT SEAL DMG	H	24.00	Slabs					
Sample Number:	003	Type:	R	Area:	24.00 Slabs	PCI:	93		
Sample Comments:									
65	JT SEAL DMG	M	24.00	Slabs					

Network:	SCB	Name:	SCRIBNER						
Branch:	SCBT1	Name:	TAXIWAYS TO 17/35	Use:	TAXIWAY	Area:	163,715 SqFt		
Section:	06	of 7	From:	RW END 35	To:	TW1-03	Last Const.: 5/13/2016		
Surface:	PCC	Family:	NDA-PCC-TAXIWAY-C	Zone:	E	Category:	C	Rank:	P
Area:	6,401 SqFt	Length:	138 Ft	Width:	35 Ft				
Slabs:	76	Slab Length:	10 Ft	Slab Width:	9 Ft	Joint Length:	859 Ft		
Shoulder:		Street Type:		Grade:	0	Lanes:	0		
Section Comments:	3 SU								
Last Insp. Date:	9/7/2022	TotalSamples:	3	Surveyed:	3				
Conditions:	PCI: 100								
Inspection Comments:									
Sample Number:	001	Type:	R	Area:	24.00 Slabs	PCI:	100		
Sample Comments:	<No Distress>								
Sample Number:	002	Type:	R	Area:	26.00 Slabs	PCI:	100		
Sample Comments:	<No Distress>								
Sample Number:	003	Type:	R	Area:	26.00 Slabs	PCI:	100		
Sample Comments:	<No Distress>								

Network:	SCB	Name:	SCRIBNER						
Branch:	SCBT1	Name:	TAXIWAYS TO 17/35	Use:	TAXIWAY	Area:	163,715 SqFt		
Section:	07	of 7	From:	RW END 17	To:	TW1-04	Last Const.: 5/13/2016		
Surface:	PCC	Family:	NDA-PCC-TAXIWAY-C	Zone:	E	Category:	C	Rank:	P
Area:	6,401 SqFt	Length:	138 Ft	Width:	35 Ft				
Slabs:	76	Slab Length:	10 Ft	Slab Width:	9 Ft	Joint Length:	859 Ft		
Shoulder:		Street Type:		Grade:	0	Lanes:	0		
Section Comments:	3 SU								
Last Insp. Date:	9/7/2022	TotalSamples:	3	Surveyed:	3				
Conditions:	PCI: 97								
Inspection Comments:									
Sample Number:	001	Type:	R	Area:	24.00 Slabs	PCI:	100		
Sample Comments:	<No Distress>								
Sample Number:	002	Type:	R	Area:	26.00 Slabs	PCI:	98		
Sample Comments:									
65	JT SEAL DMG	Type:	L	Area:	26.00 Slabs				
Sample Number:	003	Type:	R	Area:	26.00 Slabs	PCI:	93		
Sample Comments:									
65	JT SEAL DMG	Type:	M	Area:	26.00 Slabs				

76	ASR	L	1.00	Slabs
76	ASR	L	1.00	Slabs

Sample Number: 003 **Type:** R **Area:** 20.00 Slabs **PCI:** 27

Sample Comments:

63	LINEAR CR	L	1.00	Slabs
63	LINEAR CR	L	1.00	Slabs
63	LINEAR CR	M	1.00	Slabs
63	LINEAR CR	M	1.00	Slabs
63	LINEAR CR	M	1.00	Slabs
63	LINEAR CR	M	1.00	Slabs
63	LINEAR CR	M	1.00	Slabs
63	LINEAR CR	M	1.00	Slabs
63	LINEAR CR	M	1.00	Slabs
63	LINEAR CR	M	1.00	Slabs
63	LINEAR CR	M	1.00	Slabs
63	LINEAR CR	M	1.00	Slabs
63	LINEAR CR	M	1.00	Slabs
63	LINEAR CR	M	1.00	Slabs
63	LINEAR CR	M	1.00	Slabs
74	JOINT SPALL	L	1.00	Slabs
74	JOINT SPALL	M	1.00	Slabs
74	JOINT SPALL	M	1.00	Slabs
75	CORNER SPALL	L	1.00	Slabs
75	CORNER SPALL	M	1.00	Slabs
75	CORNER SPALL	M	1.00	Slabs
76	ASR	L	1.00	Slabs
76	ASR	L	1.00	Slabs
76	ASR	L	1.00	Slabs
76	ASR	L	1.00	Slabs
76	ASR	L	1.00	Slabs
76	ASR	L	1.00	Slabs
76	ASR	L	1.00	Slabs
76	ASR	L	1.00	Slabs
76	ASR	L	1.00	Slabs
76	ASR	L	1.00	Slabs
76	ASR	L	1.00	Slabs
76	ASR	L	1.00	Slabs
76	ASR	L	1.00	Slabs
76	ASR	L	1.00	Slabs
76	ASR	L	1.00	Slabs
76	ASR	L	1.00	Slabs
76	ASR	L	1.00	Slabs
76	ASR	L	1.00	Slabs
76	ASR	L	1.00	Slabs
76	ASR	L	1.00	Slabs
76	ASR	L	1.00	Slabs

Sample Number: 005 **Type:** R **Area:** 20.00 Slabs **PCI:** 14

Sample Comments:

63	LINEAR CR	L	1.00	Slabs
63	LINEAR CR	M	1.00	Slabs
63	LINEAR CR	M	1.00	Slabs
63	LINEAR CR	M	1.00	Slabs
63	LINEAR CR	M	1.00	Slabs
63	LINEAR CR	M	1.00	Slabs
63	LINEAR CR	M	1.00	Slabs
63	LINEAR CR	M	1.00	Slabs
63	LINEAR CR	M	1.00	Slabs
63	LINEAR CR	M	1.00	Slabs
63	LINEAR CR	M	1.00	Slabs
63	LINEAR CR	M	1.00	Slabs
63	LINEAR CR	M	1.00	Slabs
63	LINEAR CR	M	1.00	Slabs
63	LINEAR CR	M	1.00	Slabs
72	SHAT. SLAB	M	1.00	Slabs
72	SHAT. SLAB	M	1.00	Slabs
72	SHAT. SLAB	M	1.00	Slabs
72	SHAT. SLAB	M	1.00	Slabs
75	CORNER SPALL	L	1.00	Slabs
75	CORNER SPALL	L	1.00	Slabs
76	ASR	L	1.00	Slabs
76	ASR	L	1.00	Slabs

76	ASR	L	1.00	Slabs
76	ASR	L	1.00	Slabs
76	ASR	L	1.00	Slabs
76	ASR	L	1.00	Slabs
76	ASR	L	1.00	Slabs
76	ASR	L	1.00	Slabs
76	ASR	L	1.00	Slabs
76	ASR	L	1.00	Slabs
76	ASR	L	1.00	Slabs
76	ASR	L	1.00	Slabs
76	ASR	L	1.00	Slabs
76	ASR	L	1.00	Slabs
76	ASR	L	1.00	Slabs
76	ASR	L	1.00	Slabs
76	ASR	L	1.00	Slabs

Sample Number: 006 **Type:** R **Area:** 20.00 Slabs **PCI:** 19

Sample Comments:

63	LINEAR CR	L	1.00	Slabs
63	LINEAR CR	L	1.00	Slabs
63	LINEAR CR	L	1.00	Slabs
63	LINEAR CR	L	1.00	Slabs
63	LINEAR CR	L	1.00	Slabs
63	LINEAR CR	M	1.00	Slabs
63	LINEAR CR	M	1.00	Slabs
63	LINEAR CR	M	1.00	Slabs
63	LINEAR CR	M	1.00	Slabs
63	LINEAR CR	M	1.00	Slabs
63	LINEAR CR	M	1.00	Slabs
72	SHAT. SLAB	M	1.00	Slabs
72	SHAT. SLAB	M	1.00	Slabs
72	SHAT. SLAB	M	1.00	Slabs
72	SHAT. SLAB	M	1.00	Slabs
74	JOINT SPALL	L	1.00	Slabs
74	JOINT SPALL	M	1.00	Slabs
76	ASR	L	1.00	Slabs
76	ASR	L	1.00	Slabs
76	ASR	L	1.00	Slabs
76	ASR	L	1.00	Slabs
76	ASR	L	1.00	Slabs
76	ASR	L	1.00	Slabs
76	ASR	L	1.00	Slabs
76	ASR	L	1.00	Slabs
76	ASR	L	1.00	Slabs
76	ASR	L	1.00	Slabs
76	ASR	L	1.00	Slabs
76	ASR	L	1.00	Slabs
76	ASR	L	1.00	Slabs
76	ASR	L	1.00	Slabs

Sample Number: 007 **Type:** R **Area:** 20.00 Slabs **PCI:** 34

Sample Comments:

62	CORNER BREAK	L	1.00	Slabs
62	CORNER BREAK	L	1.00	Slabs
62	CORNER BREAK	L	1.00	Slabs
62	CORNER BREAK	L	1.00	Slabs
63	LINEAR CR	L	1.00	Slabs
63	LINEAR CR	L	1.00	Slabs
63	LINEAR CR	L	1.00	Slabs
63	LINEAR CR	L	1.00	Slabs
63	LINEAR CR	L	1.00	Slabs
63	LINEAR CR	L	1.00	Slabs
63	LINEAR CR	L	1.00	Slabs
63	LINEAR CR	M	1.00	Slabs
65	JT SEAL DMG	L	20.00	Slabs
72	SHAT. SLAB	L	1.00	Slabs
72	SHAT. SLAB	L	1.00	Slabs
72	SHAT. SLAB	M	1.00	Slabs

76	ASR	L	1.00	Slabs
76	ASR	L	1.00	Slabs
76	ASR	L	1.00	Slabs
76	ASR	L	1.00	Slabs
76	ASR	L	1.00	Slabs
76	ASR	L	1.00	Slabs
76	ASR	L	1.00	Slabs

Sample Number: 010 **Type:** R **Area:** 31.00 Slabs **PCI:** 32

Sample Comments:

62	CORNER BREAK	L	1.00	Slabs
62	CORNER BREAK	L	1.00	Slabs
62	CORNER BREAK	L	1.00	Slabs
63	LINEAR CR	L	1.00	Slabs
63	LINEAR CR	L	1.00	Slabs
63	LINEAR CR	L	1.00	Slabs
63	LINEAR CR	L	1.00	Slabs
63	LINEAR CR	L	1.00	Slabs
63	LINEAR CR	L	1.00	Slabs
63	LINEAR CR	L	1.00	Slabs
72	SHAT. SLAB	L	1.00	Slabs
72	SHAT. SLAB	M	1.00	Slabs
72	SHAT. SLAB	M	1.00	Slabs
72	SHAT. SLAB	M	1.00	Slabs
72	SHAT. SLAB	M	1.00	Slabs
72	SHAT. SLAB	M	1.00	Slabs
72	SHAT. SLAB	M	1.00	Slabs
72	SHAT. SLAB	M	1.00	Slabs
72	SHAT. SLAB	M	1.00	Slabs
72	SHAT. SLAB	M	1.00	Slabs
76	ASR	L	1.00	Slabs
76	ASR	L	1.00	Slabs
76	ASR	L	1.00	Slabs
76	ASR	L	1.00	Slabs
76	ASR	L	1.00	Slabs
76	ASR	L	1.00	Slabs
76	ASR	L	1.00	Slabs
76	ASR	L	1.00	Slabs
76	ASR	L	1.00	Slabs
76	ASR	L	1.00	Slabs
76	ASR	L	1.00	Slabs
76	ASR	L	1.00	Slabs
76	ASR	L	1.00	Slabs
76	ASR	L	1.00	Slabs
76	ASR	L	1.00	Slabs
76	ASR	L	1.00	Slabs
76	ASR	L	1.00	Slabs
76	ASR	L	1.00	Slabs
76	ASR	L	1.00	Slabs
76	ASR	L	1.00	Slabs
76	ASR	L	1.00	Slabs

Sample Number: 012 **Type:** R **Area:** 20.00 Slabs **PCI:** 13

Sample Comments:

62	CORNER BREAK	L	1.00	Slabs
63	LINEAR CR	L	1.00	Slabs
63	LINEAR CR	L	1.00	Slabs
63	LINEAR CR	M	1.00	Slabs
63	LINEAR CR	M	1.00	Slabs
63	LINEAR CR	M	1.00	Slabs
63	LINEAR CR	M	1.00	Slabs
63	LINEAR CR	M	1.00	Slabs
63	LINEAR CR	M	1.00	Slabs
63	LINEAR CR	M	1.00	Slabs
63	LINEAR CR	M	1.00	Slabs
63	LINEAR CR	M	1.00	Slabs
63	LINEAR CR	M	1.00	Slabs
63	LINEAR CR	M	1.00	Slabs
63	LINEAR CR	M	1.00	Slabs
63	LINEAR CR	M	1.00	Slabs
63	LINEAR CR	M	1.00	Slabs
72	SHAT. SLAB	M	1.00	Slabs
72	SHAT. SLAB	M	1.00	Slabs
72	SHAT. SLAB	M	1.00	Slabs

72	SHAT. SLAB	M	1.00	Slabs
72	SHAT. SLAB	M	1.00	Slabs
75	CORNER SPALL	L	1.00	Slabs
76	ASR	L	1.00	Slabs
76	ASR	L	1.00	Slabs
76	ASR	L	1.00	Slabs
76	ASR	L	1.00	Slabs
76	ASR	L	1.00	Slabs
76	ASR	L	1.00	Slabs
76	ASR	L	1.00	Slabs
76	ASR	L	1.00	Slabs
76	ASR	L	1.00	Slabs
76	ASR	L	1.00	Slabs
76	ASR	L	1.00	Slabs
76	ASR	L	1.00	Slabs
76	ASR	L	1.00	Slabs
76	ASR	L	1.00	Slabs

Sample Number: 014 **Type:** R **Area:** 20.00 Slabs **PCI:** 16

Sample Comments:

63	LINEAR CR	L	1.00	Slabs
63	LINEAR CR	L	1.00	Slabs
63	LINEAR CR	L	1.00	Slabs
63	LINEAR CR	M	1.00	Slabs
63	LINEAR CR	M	1.00	Slabs
63	LINEAR CR	M	1.00	Slabs
63	LINEAR CR	M	1.00	Slabs
63	LINEAR CR	M	1.00	Slabs
63	LINEAR CR	M	1.00	Slabs
63	LINEAR CR	M	1.00	Slabs
63	LINEAR CR	M	1.00	Slabs
63	LINEAR CR	M	1.00	Slabs
63	LINEAR CR	M	1.00	Slabs
65	JT SEAL DMG	M	20.00	Slabs
72	SHAT. SLAB	L	1.00	Slabs
72	SHAT. SLAB	L	1.00	Slabs
72	SHAT. SLAB	L	1.00	Slabs
72	SHAT. SLAB	L	1.00	Slabs
72	SHAT. SLAB	M	1.00	Slabs
72	SHAT. SLAB	M	1.00	Slabs
76	ASR	L	1.00	Slabs
76	ASR	L	1.00	Slabs
76	ASR	L	1.00	Slabs
76	ASR	L	1.00	Slabs
76	ASR	L	1.00	Slabs
76	ASR	L	1.00	Slabs
76	ASR	L	1.00	Slabs
76	ASR	L	1.00	Slabs
76	ASR	L	1.00	Slabs
76	ASR	L	1.00	Slabs
76	ASR	L	1.00	Slabs
76	ASR	L	1.00	Slabs
76	ASR	L	1.00	Slabs
76	ASR	L	1.00	Slabs
76	ASR	L	1.00	Slabs
76	ASR	L	1.00	Slabs
76	ASR	L	1.00	Slabs

Sample Number: 015 **Type:** R **Area:** 20.00 Slabs **PCI:** 16

Sample Comments:

62	CORNER BREAK	L	1.00	Slabs
62	CORNER BREAK	M	1.00	Slabs
63	LINEAR CR	L	1.00	Slabs
63	LINEAR CR	L	1.00	Slabs
63	LINEAR CR	L	1.00	Slabs
63	LINEAR CR	L	1.00	Slabs
63	LINEAR CR	L	1.00	Slabs
63	LINEAR CR	L	1.00	Slabs
63	LINEAR CR	L	1.00	Slabs
63	LINEAR CR	M	1.00	Slabs

65	JT SEAL DMG	M	20.00	Slabs
70	SCALING	L	1.00	Slabs
70	SCALING	L	1.00	Slabs
70	SCALING	L	1.00	Slabs
76	ASR	L	1.00	Slabs
76	ASR	L	1.00	Slabs
76	ASR	L	1.00	Slabs
76	ASR	L	1.00	Slabs
76	ASR	L	1.00	Slabs
76	ASR	L	1.00	Slabs
76	ASR	L	1.00	Slabs
76	ASR	L	1.00	Slabs
76	ASR	L	1.00	Slabs
76	ASR	L	1.00	Slabs
76	ASR	L	1.00	Slabs
76	ASR	L	1.00	Slabs
76	ASR	L	1.00	Slabs
76	ASR	L	1.00	Slabs
76	ASR	L	1.00	Slabs
76	ASR	L	1.00	Slabs
76	ASR	L	1.00	Slabs

Sample Number: 020 **Type:** R **Area:** 24.00 Slabs **PCI:** 46

Sample Comments:

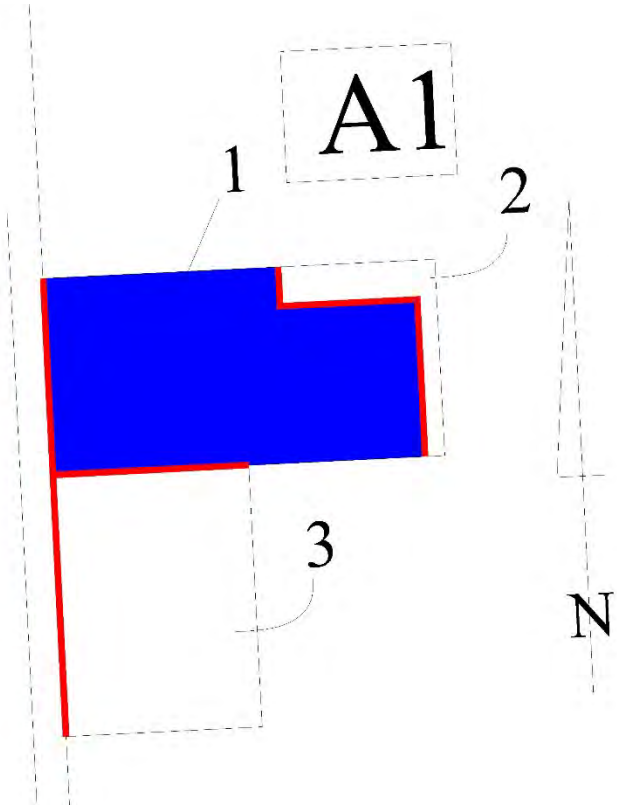
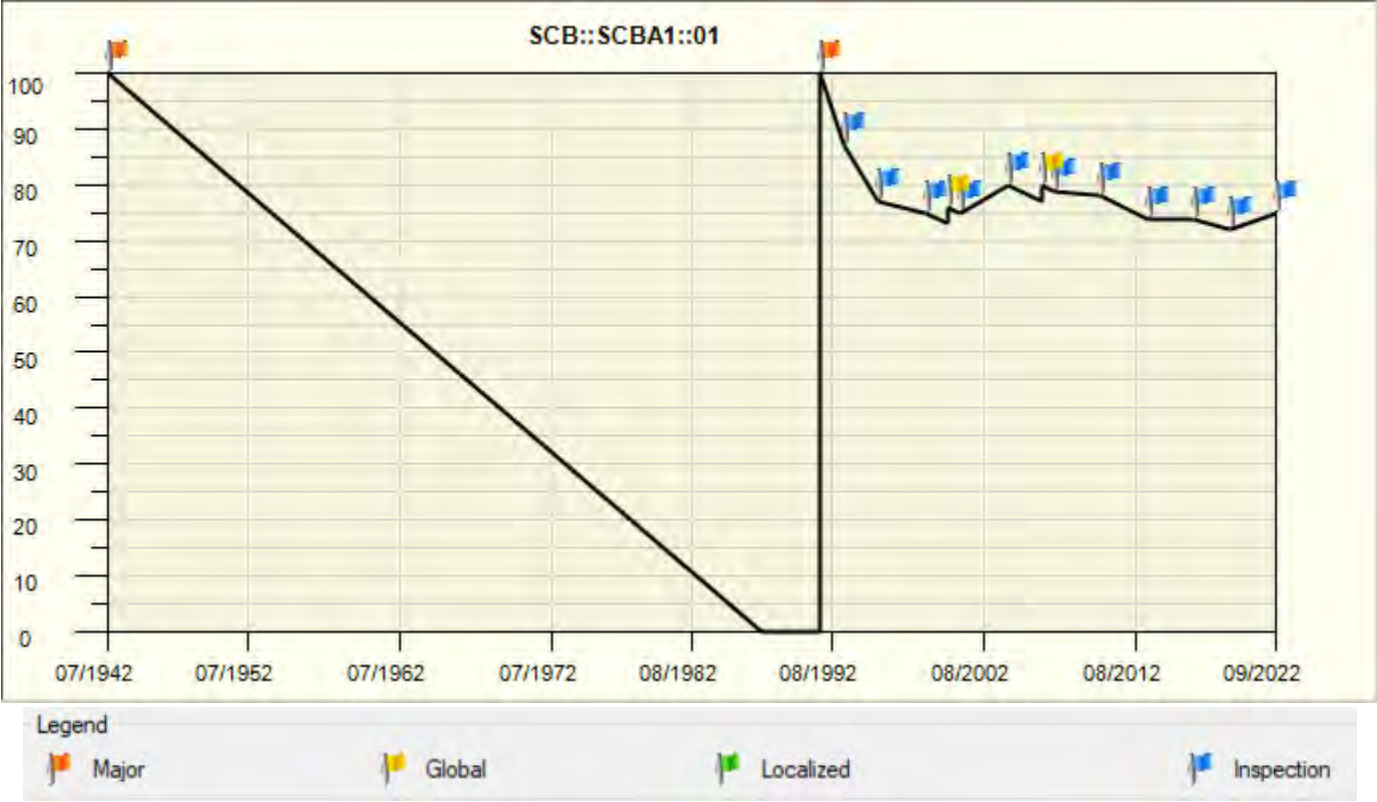
63	LINEAR CR	L	1.00	Slabs
63	LINEAR CR	L	1.00	Slabs
63	LINEAR CR	L	1.00	Slabs
63	LINEAR CR	L	1.00	Slabs
63	LINEAR CR	L	1.00	Slabs
63	LINEAR CR	L	1.00	Slabs
63	LINEAR CR	L	1.00	Slabs
63	LINEAR CR	L	1.00	Slabs
63	LINEAR CR	L	1.00	Slabs
63	LINEAR CR	L	1.00	Slabs
63	LINEAR CR	M	1.00	Slabs
70	SCALING	L	1.00	Slabs
70	SCALING	L	1.00	Slabs
70	SCALING	L	1.00	Slabs
70	SCALING	L	1.00	Slabs
70	SCALING	L	1.00	Slabs
72	SHAT. SLAB	M	1.00	Slabs
72	SHAT. SLAB	M	1.00	Slabs
74	JOINT SPALL	L	1.00	Slabs
76	ASR	L	1.00	Slabs
76	ASR	L	1.00	Slabs
76	ASR	L	1.00	Slabs
76	ASR	L	1.00	Slabs
76	ASR	L	1.00	Slabs
76	ASR	L	1.00	Slabs
76	ASR	L	1.00	Slabs
76	ASR	L	1.00	Slabs
76	ASR	L	1.00	Slabs
76	ASR	L	1.00	Slabs
76	ASR	L	1.00	Slabs
76	ASR	L	1.00	Slabs
76	ASR	L	1.00	Slabs
76	ASR	L	1.00	Slabs

Sample Number: 022 **Type:** R **Area:** 20.00 Slabs **PCI:** 45

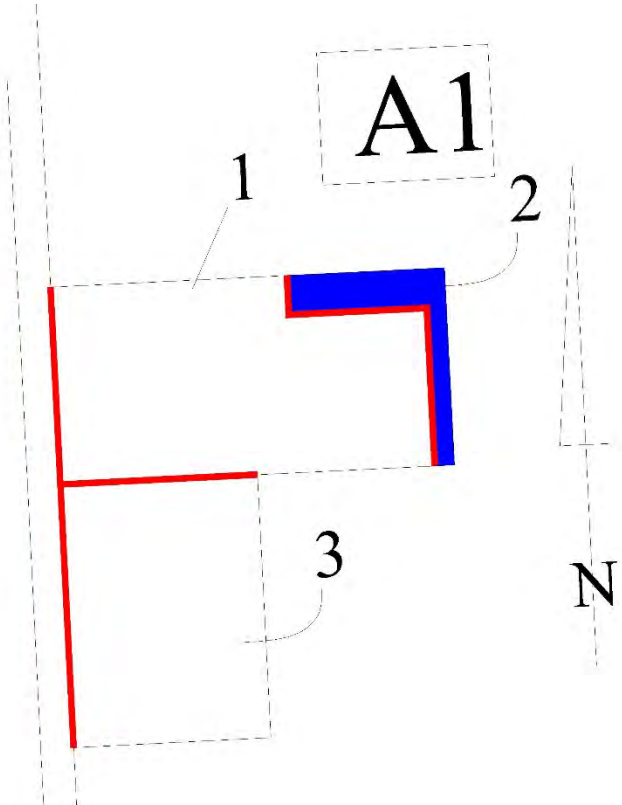
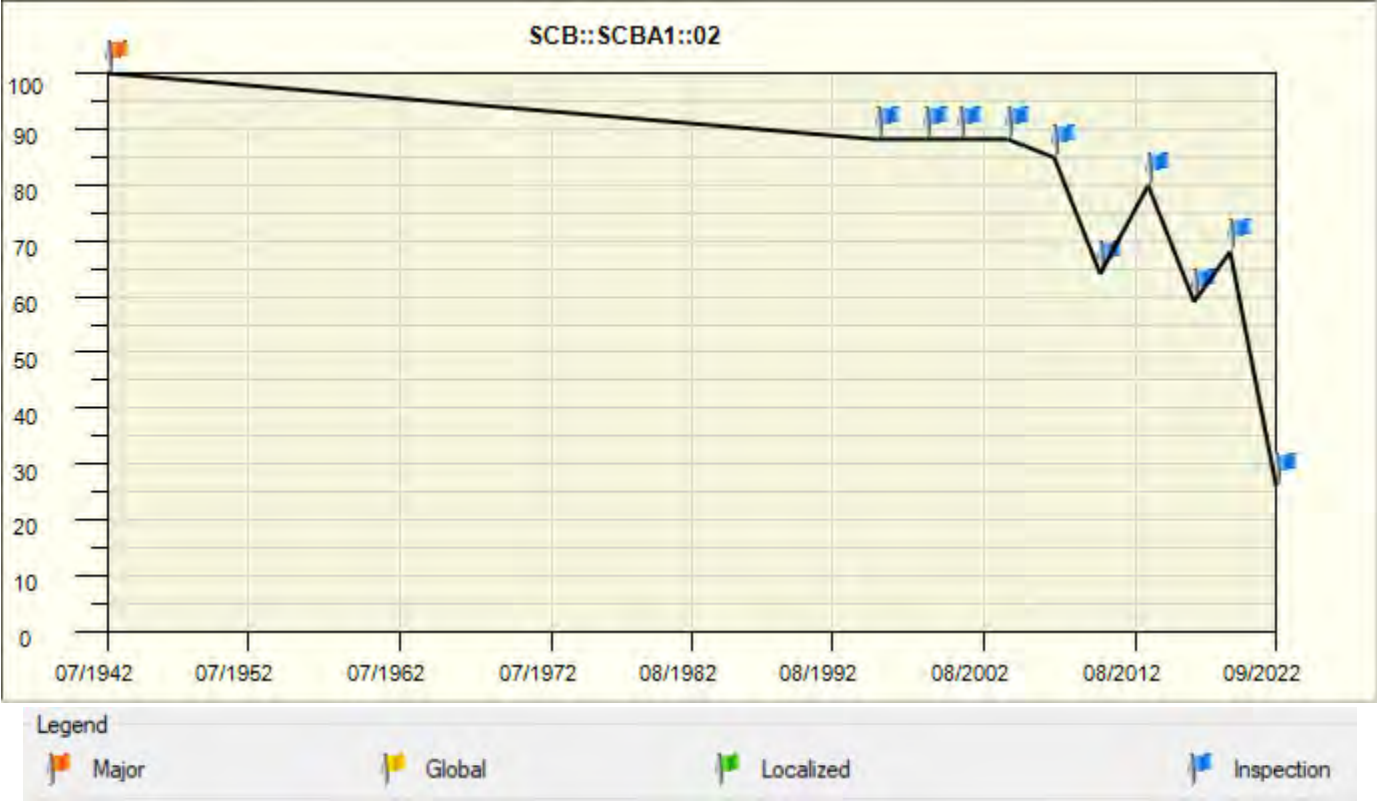
Sample Comments:

63	LINEAR CR	L	1.00	Slabs
63	LINEAR CR	L	1.00	Slabs
63	LINEAR CR	L	1.00	Slabs
63	LINEAR CR	L	1.00	Slabs
72	SHAT. SLAB	M	1.00	Slabs
72	SHAT. SLAB	M	1.00	Slabs
72	SHAT. SLAB	M	1.00	Slabs
72	SHAT. SLAB	M	1.00	Slabs
76	ASR	L	1.00	Slabs

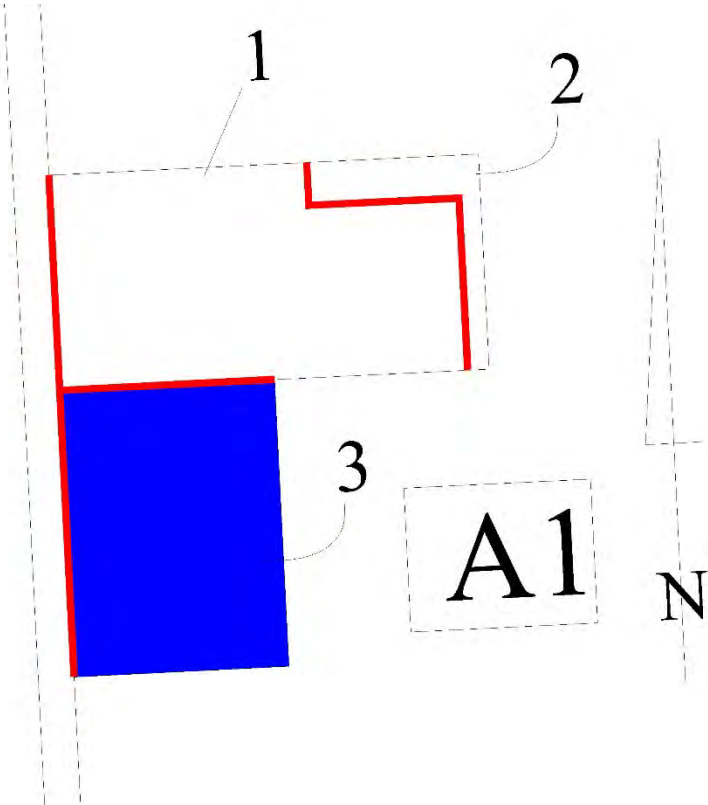
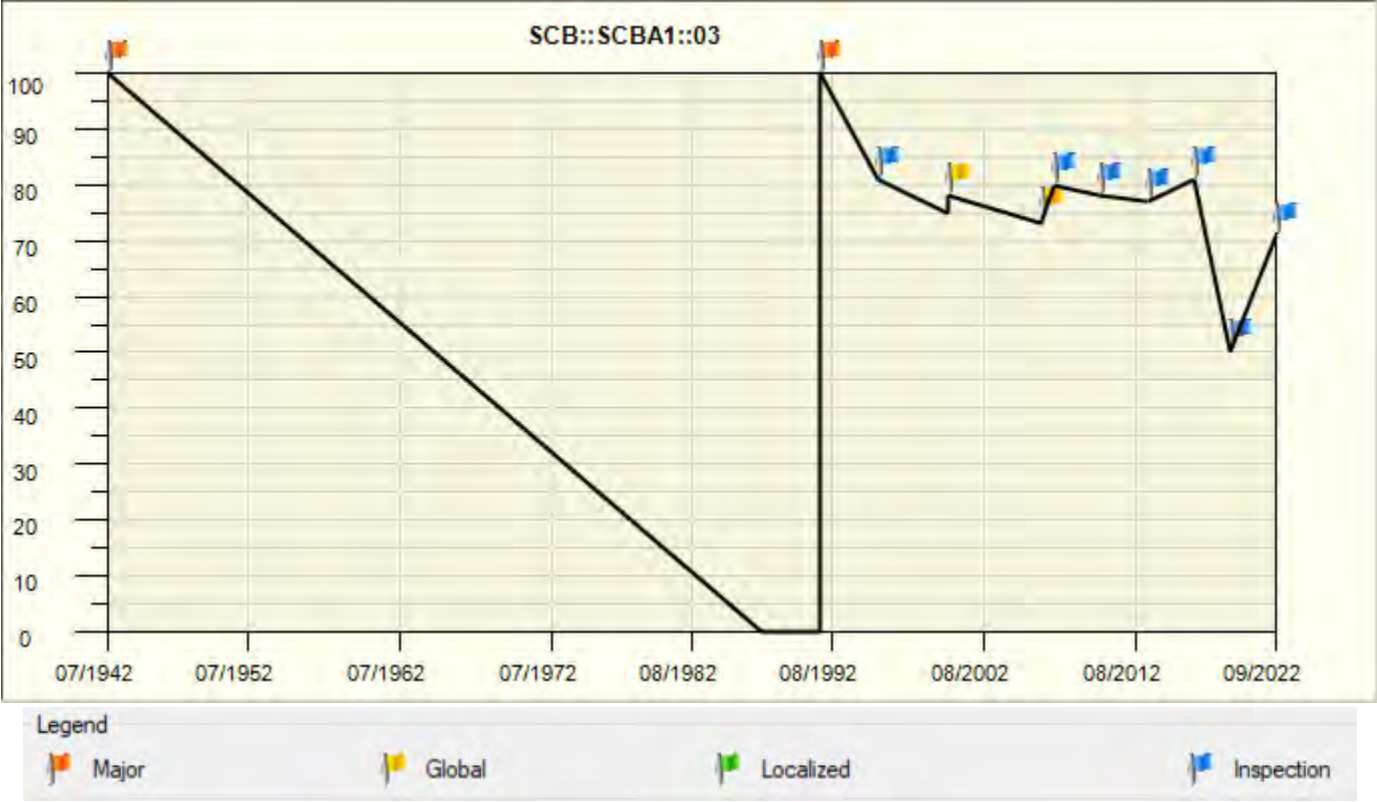
SCB (Scribner NE) Apron
Branch A1 Section 1
PCI 1942 – 2022



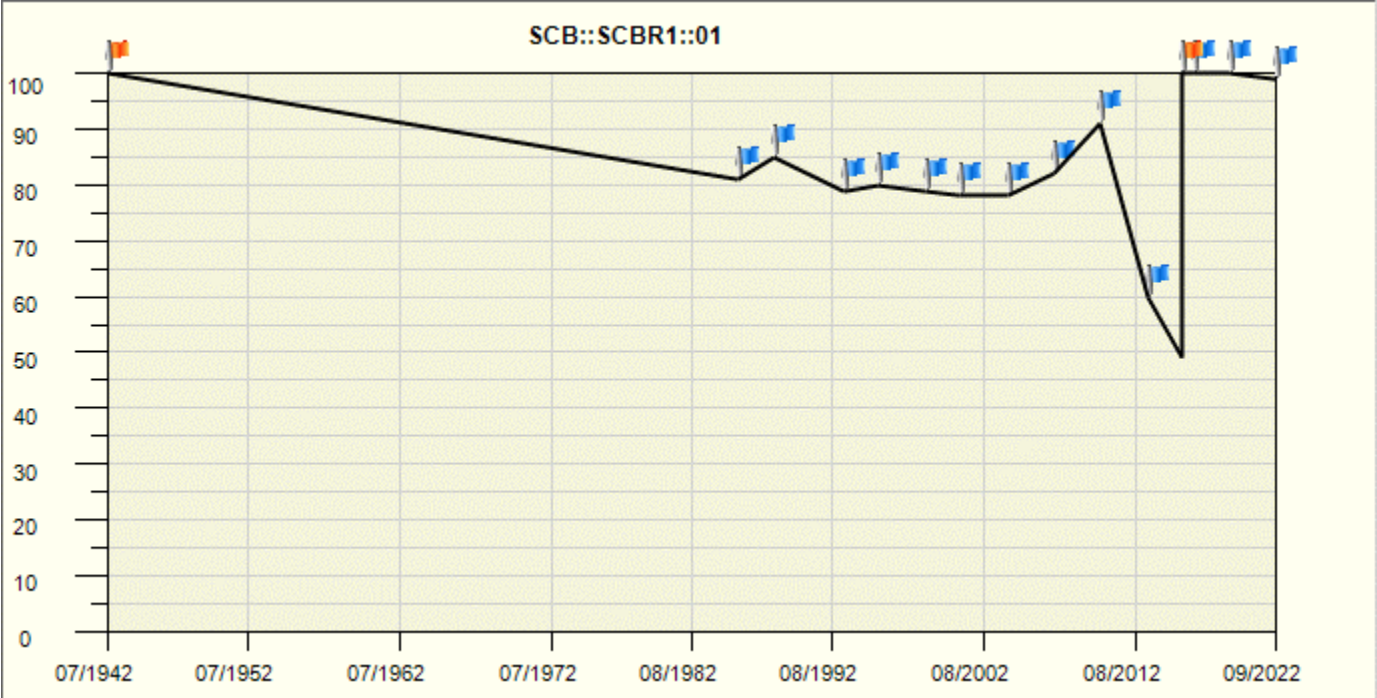
SCB (Scribner NE) Apron
Branch A1 Section 2
PCI 1942 – 2022



SCB (Scribner NE) Apron
 Branch A1 Section 3
 PCI 1942 – 2022



SCB (Scribner NE) Runway
 Branch R1 Section 1
 PCI 1942 – 2022



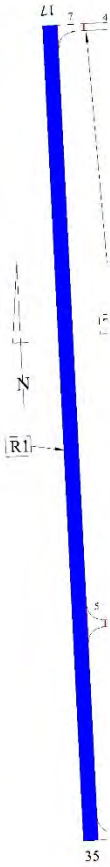
Legend

Major

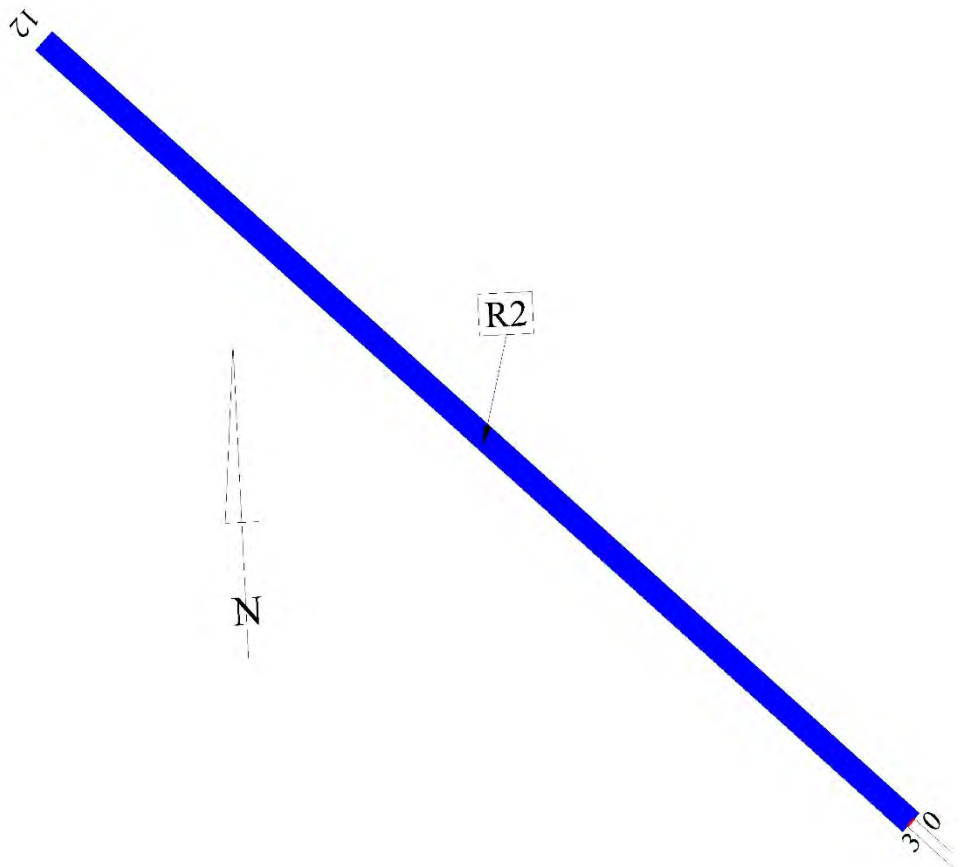
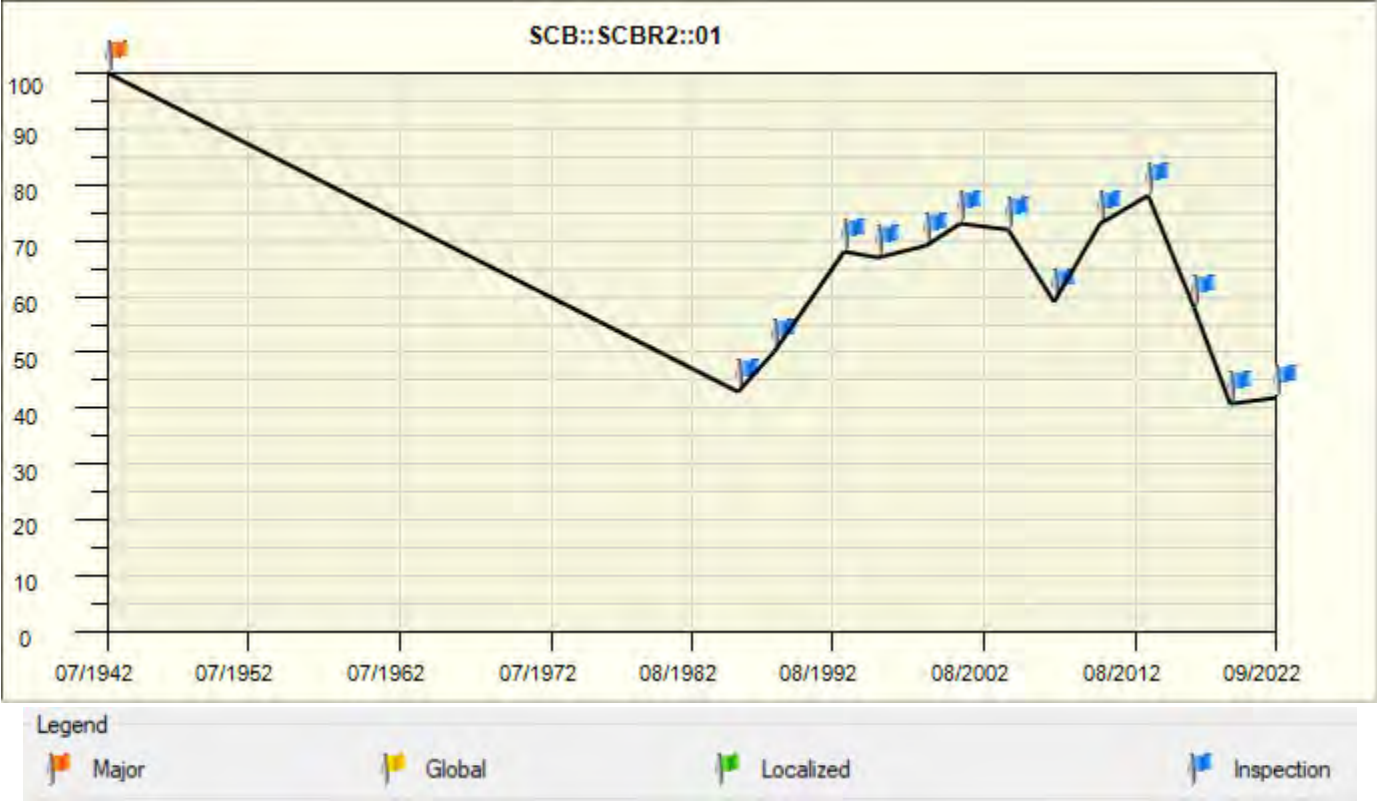
Global

Localized

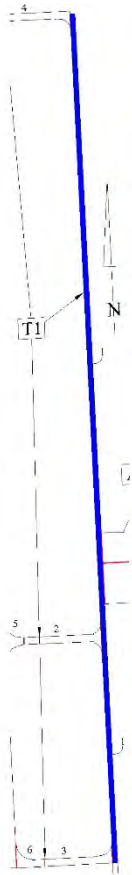
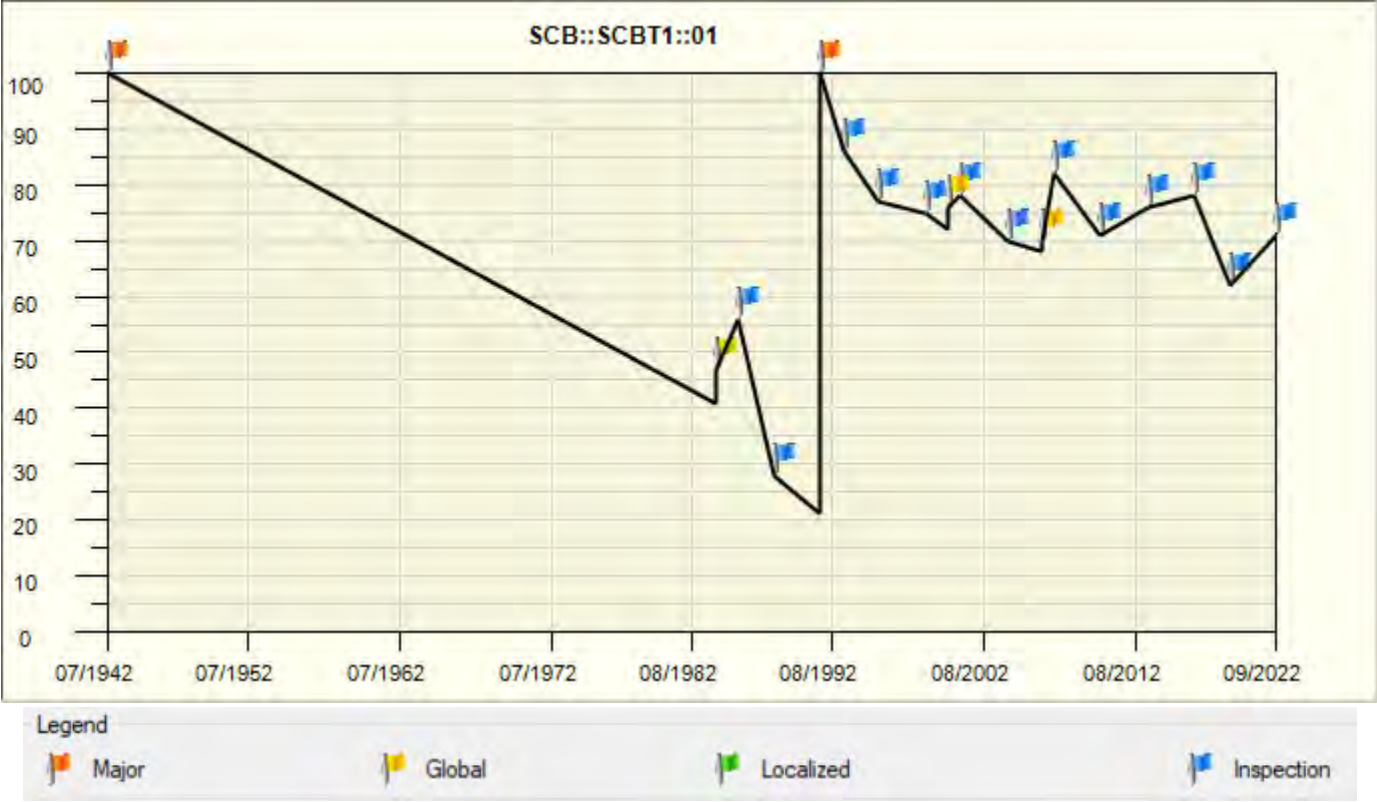
Inspection



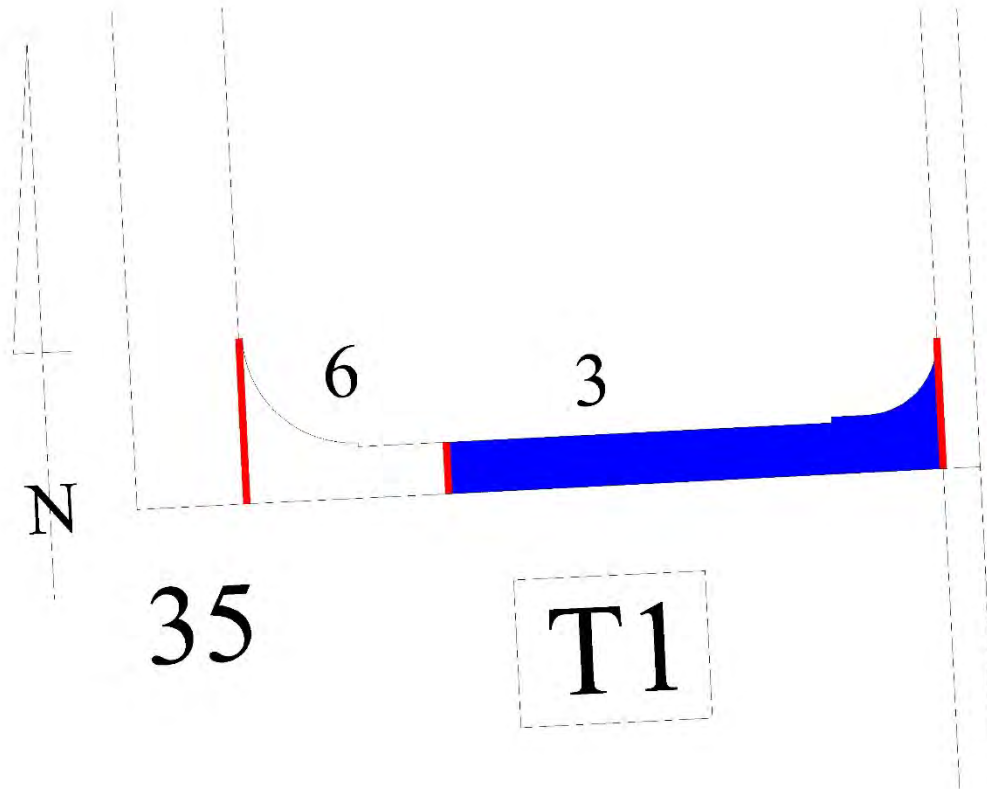
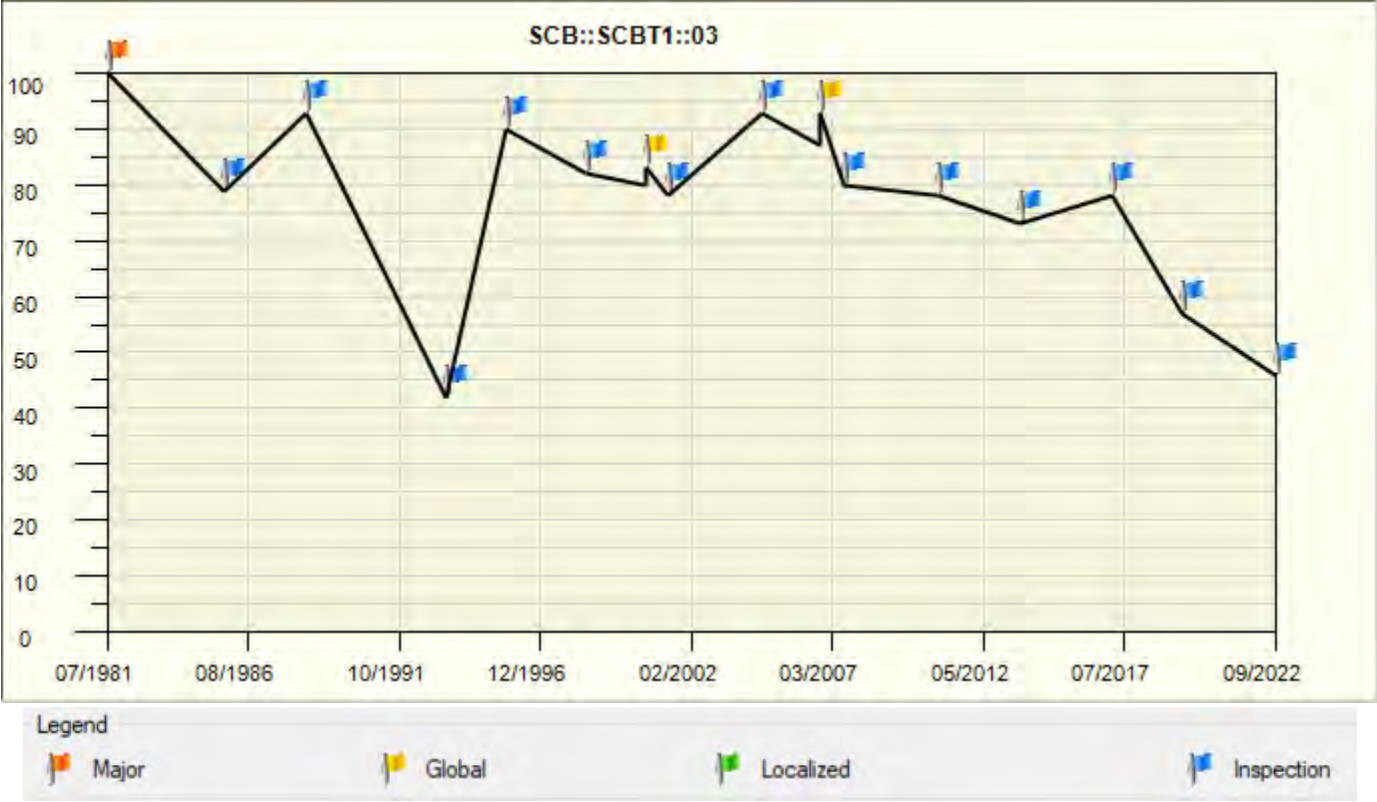
SCB (Scribner NE) Runway
Branch R2 Section 1
PCI 1942 – 2022



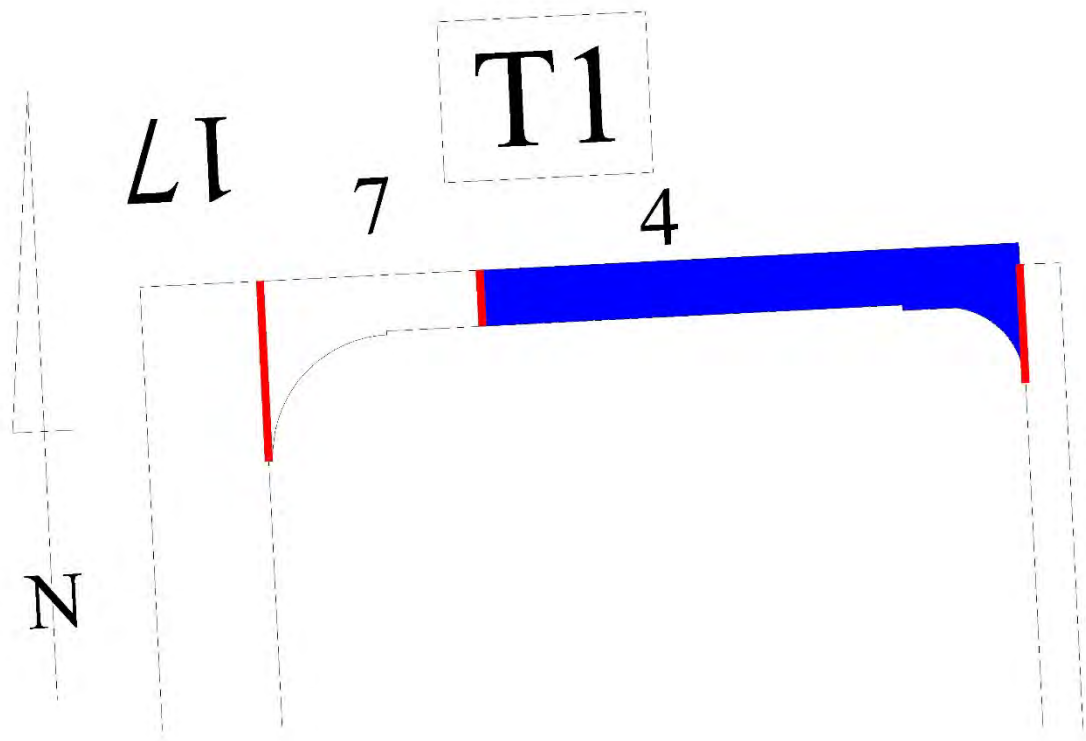
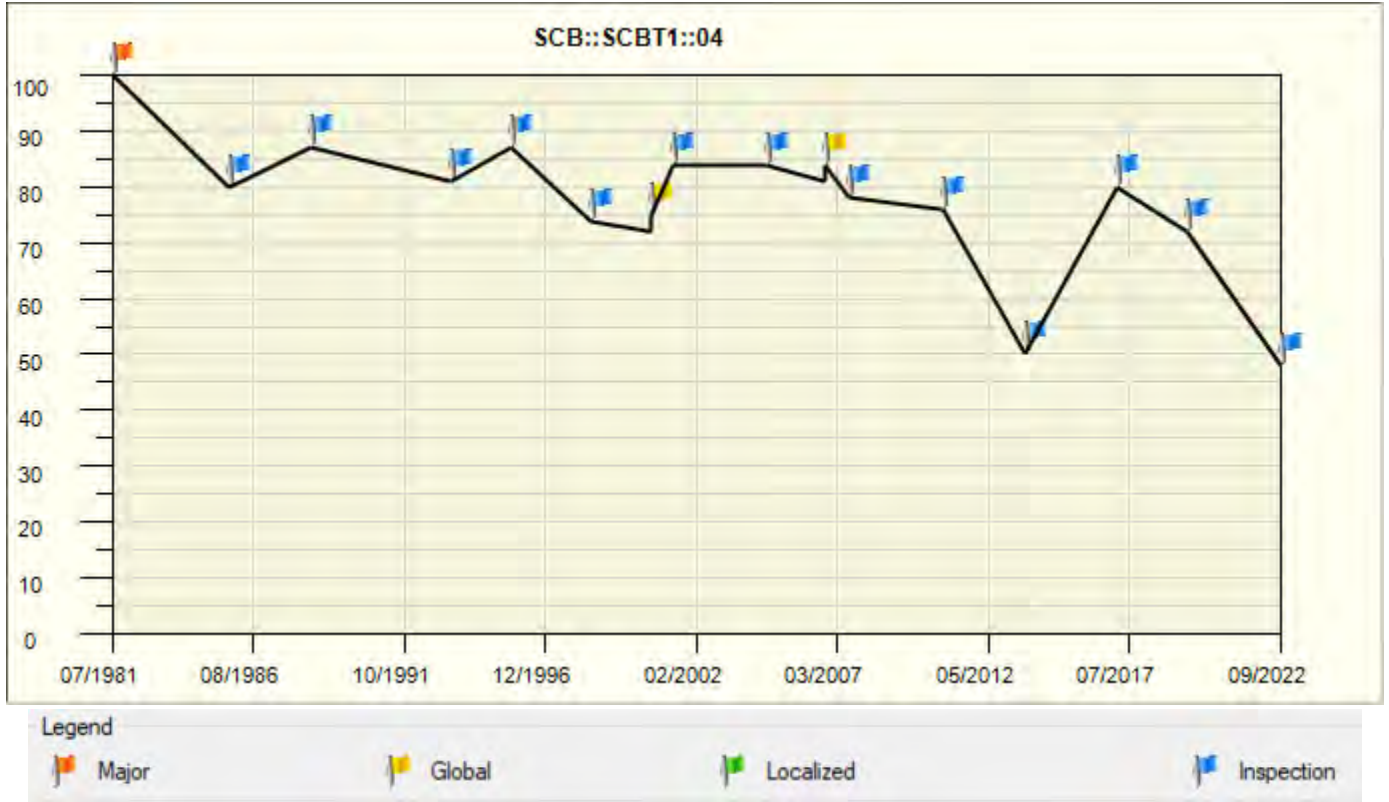
SCB (Scribner NE) Taxiway
 Branch T1 Section 1
 PCI 1942 – 2022



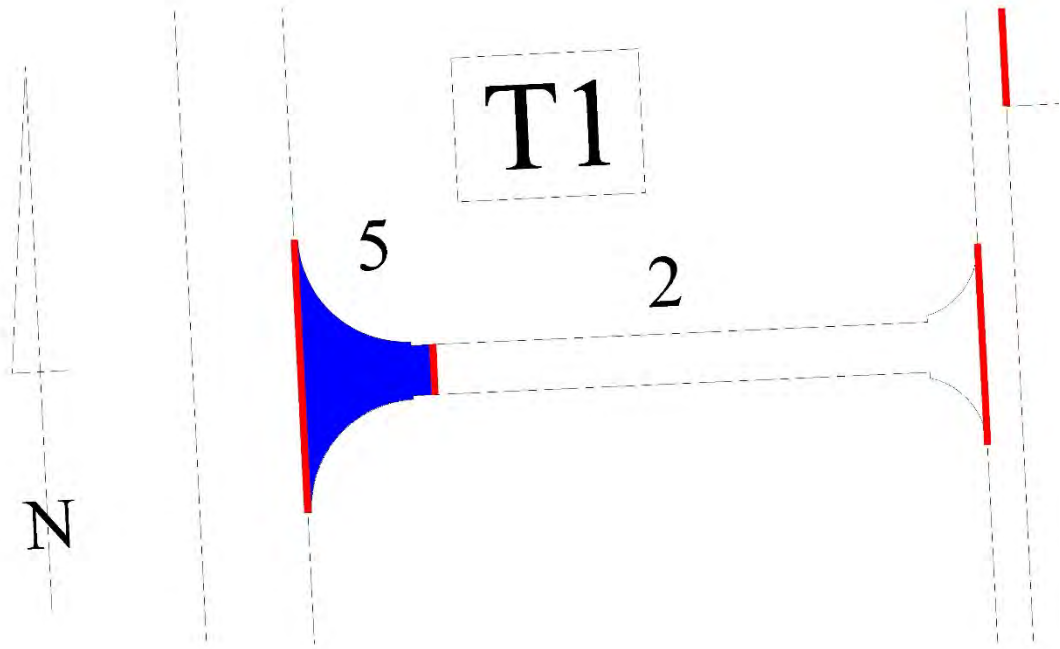
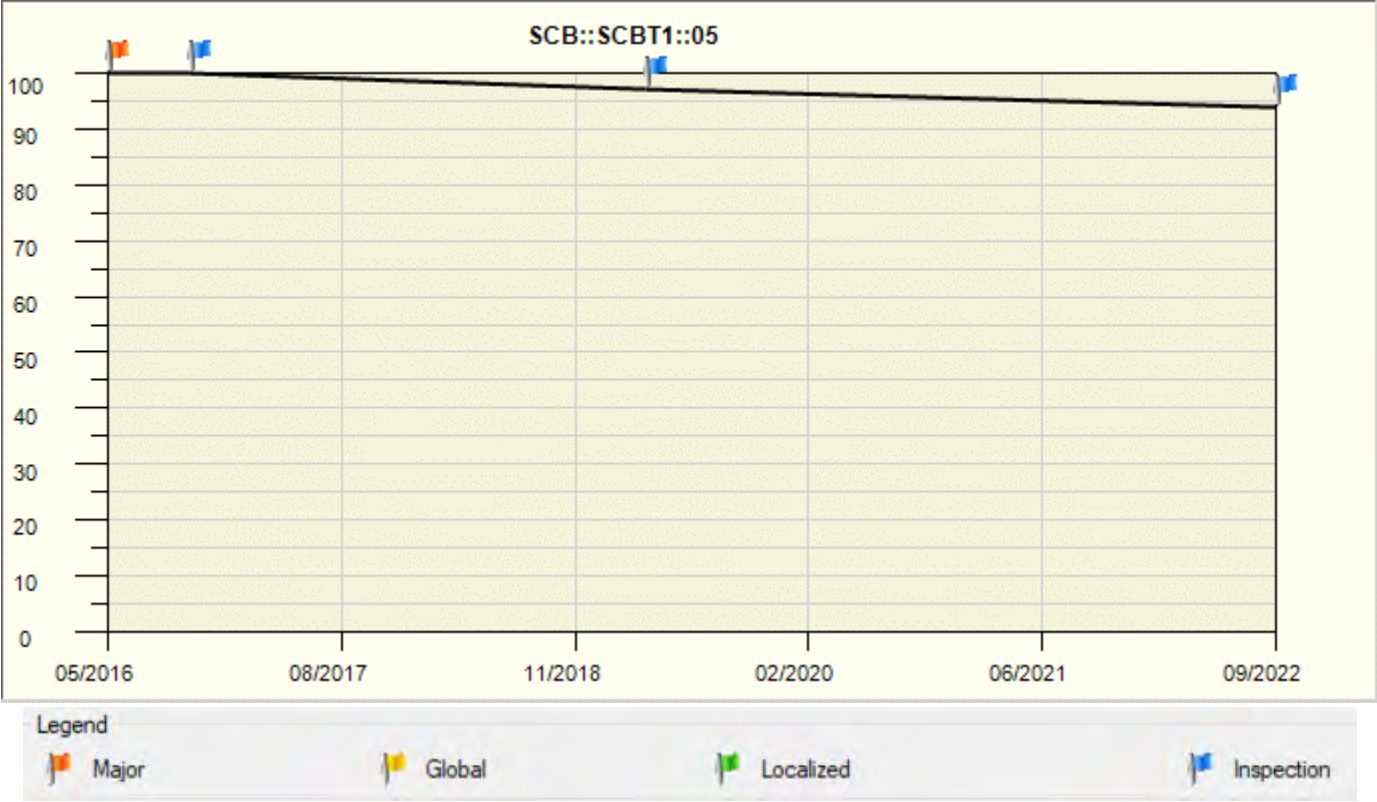
SCB (Scribner NE) Taxiway
 Branch T1 Section 3
 PCI 1981 – 2022



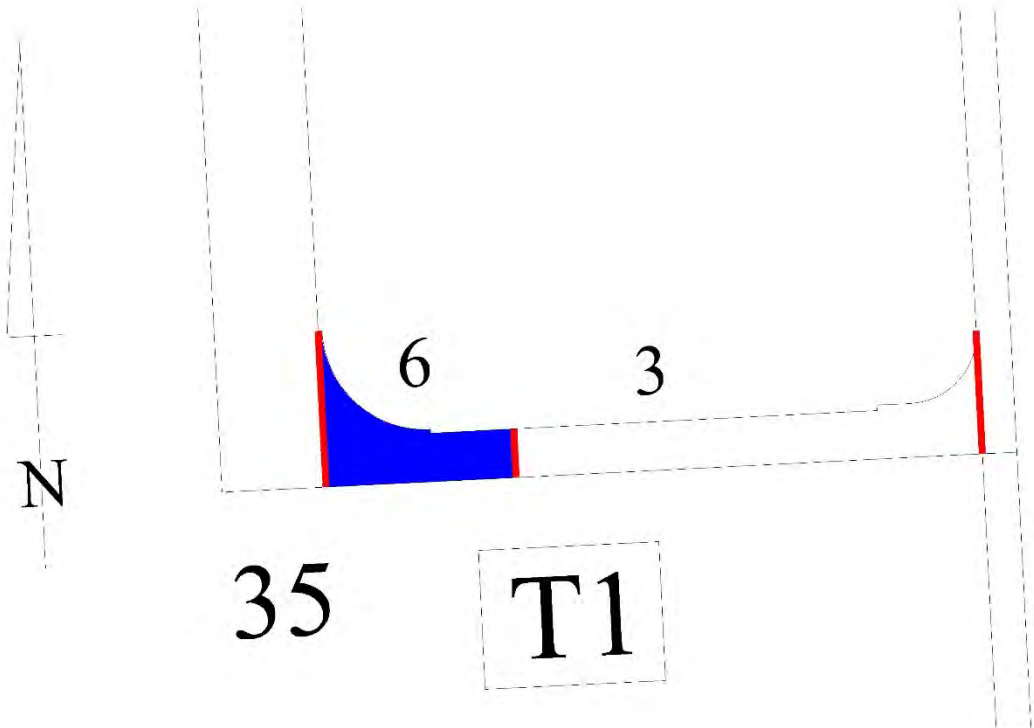
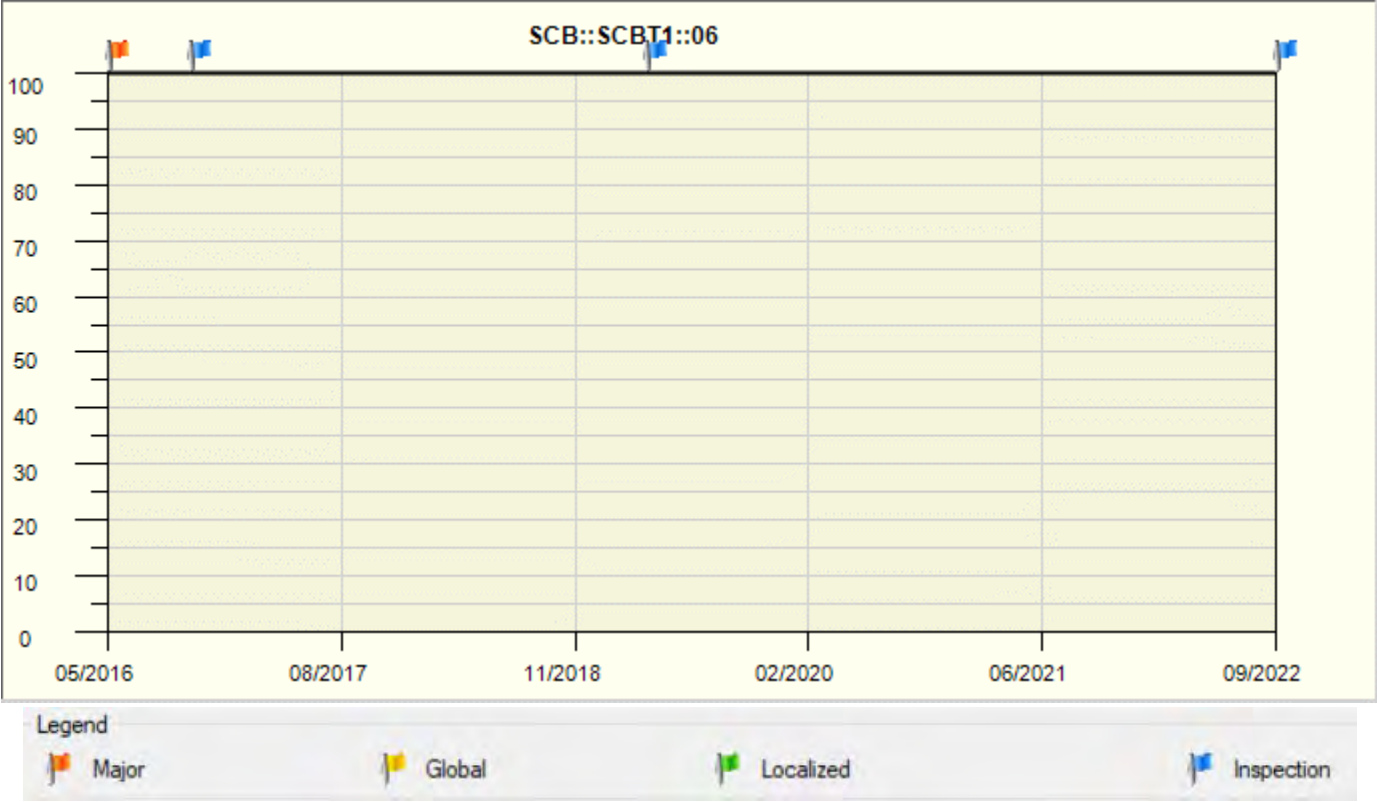
SCB (Scribner NE) Taxiway
 Branch T1 Section 4
 PCI 1981 – 2022



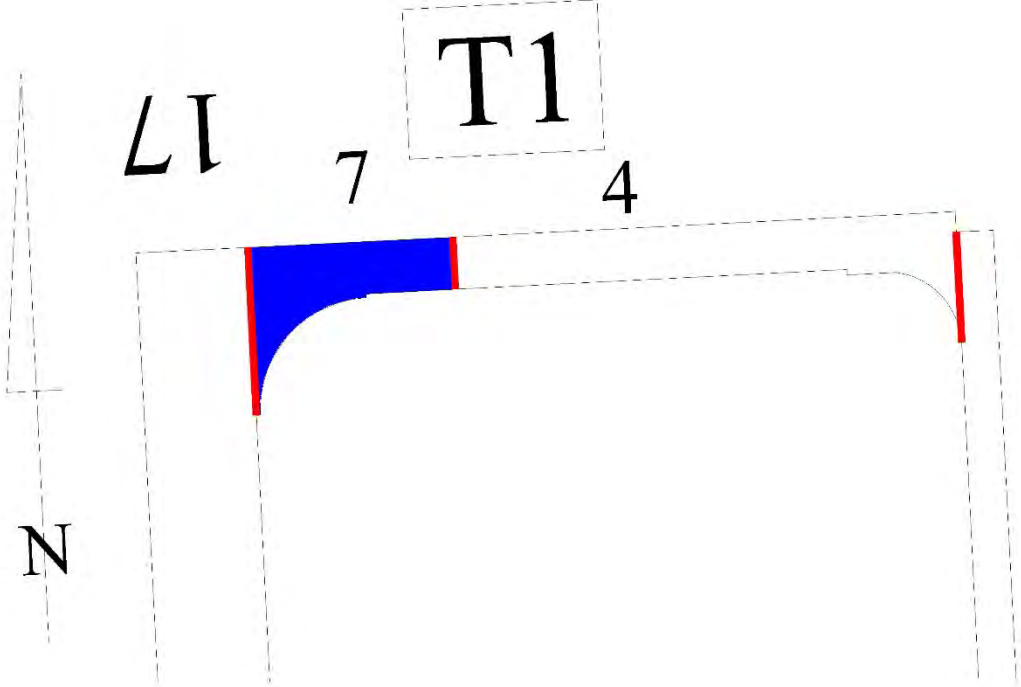
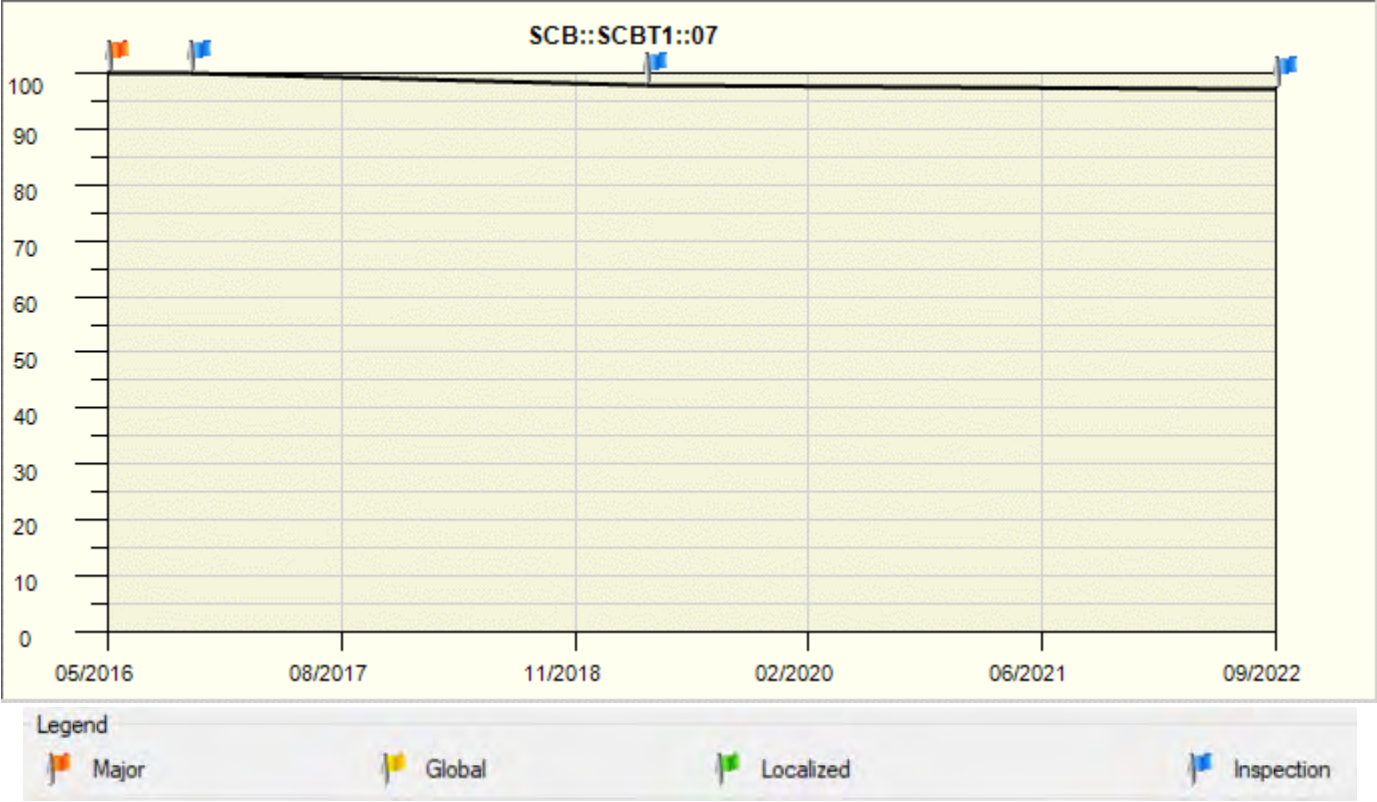
SCB (Scribner NE) Taxiway
Branch T1 Section 5
PCI 2016 – 2022



SCB (Scribner NE) Taxiway
Branch T1 Section 6
PCI 2016 – 2022



SCB (Scribner NE) Taxiway
Branch T1 Section 7
PCI 2016 – 2022



SCB (Scribner NE) Taxiway
 Branch T2 Section 1
 PCI 1942 – 2022

