

# ALMA

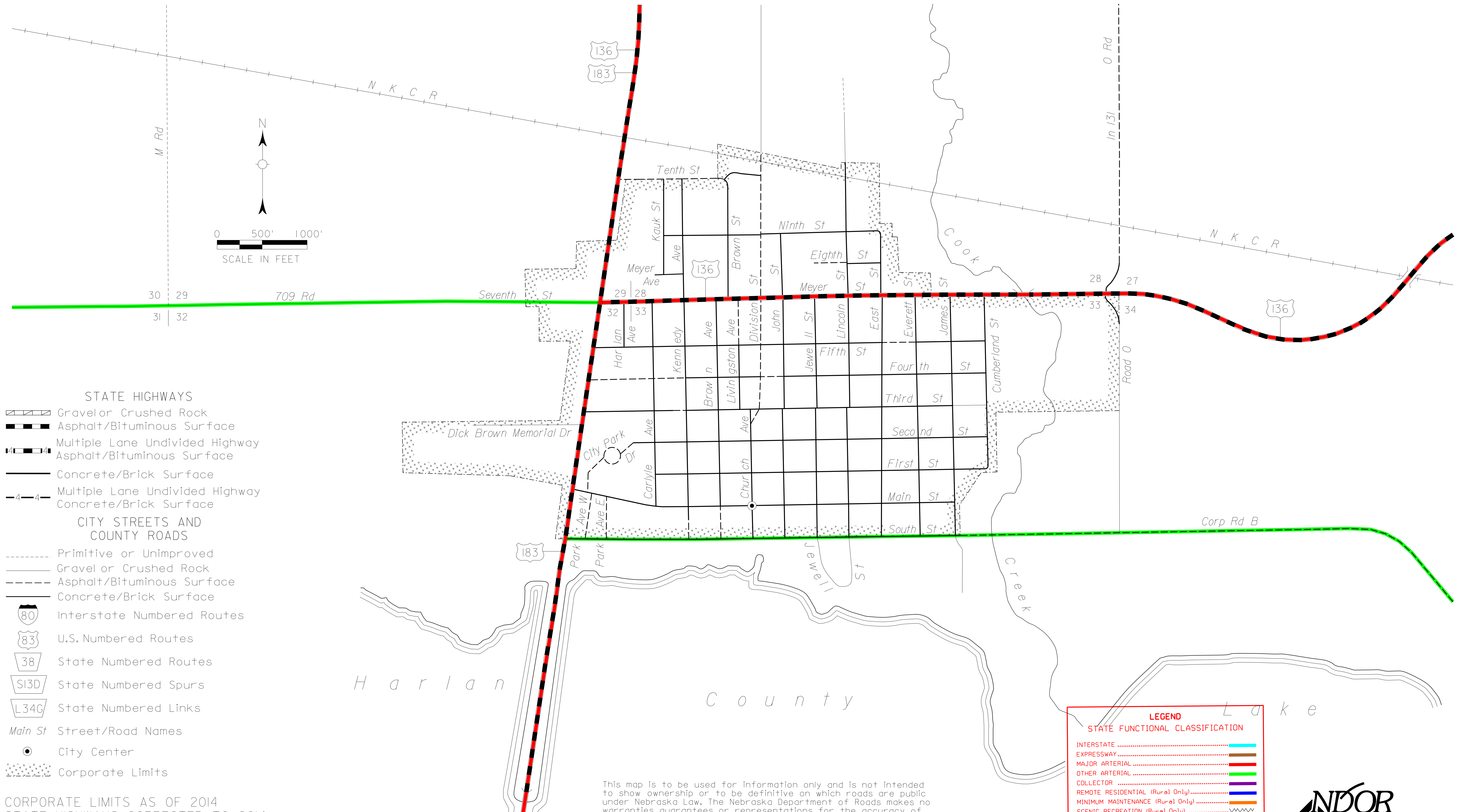
HARLAN COUNTY  
NEBRASKA

POPULATION 1133 (2010 CENSUS)

2014

R 18 W

T 2 N



- STATE HIGHWAYS**
- Gravel or Crushed Rock
  - Asphalt/Bituminous Surface
  - Multiple Lane Undivided Highway Asphalt/Bituminous Surface
  - Concrete/Brick Surface
  - Multiple Lane Undivided Highway Concrete/Brick Surface
- CITY STREETS AND COUNTY ROADS**
- Primitive or Unimproved
  - Gravel or Crushed Rock
  - Asphalt/Bituminous Surface
  - Concrete/Brick Surface
  - Interstate Numbered Routes
  - U.S. Numbered Routes
  - State Numbered Routes
  - State Numbered Spurs
  - State Numbered Links
  - Main St Street/Road Names
  - City Center
  - Corporate Limits

**LEGEND**  
STATE FUNCTIONAL CLASSIFICATION

- INTERSTATE .....
- EXPRESSWAY .....
- MAJOR ARTERIAL .....
- OTHER ARTERIAL .....
- COLLECTOR .....
- REMOTE RESIDENTIAL (Rural Only) .....
- MINIMUM MAINTENANCE (Rural Only) .....
- SCENIC RECREATION (Rural Only) .....
- URBANIZED BOUNDARY .....

CORPORATE LIMITS AS OF 2014  
STATE HIGHWAYS CORRECTED TO 2014

This map is to be used for information only and is not intended to show ownership or to be definitive on which roads are public under Nebraska Law. The Nebraska Department of Roads makes no warranties, guarantees or representations for the accuracy of this information and assumes no liability for errors or omissions. Any inconsistencies should be reported to NDOR.



All Roads Not Otherwise Indicated Are Classified As Local