

April 9, 2015

FOR IMMEDIATE RELEASE

Reminder

Washington County

Monday, April 13, 2015

Until

November 2015

**Highway N-133 CLOSED South of Blair
between
Hwy US-30/N-133 Roundabout
&
County Road P30 (Kennard Cut-Off).**

***Only Local N-133 Residential Traffic Permitted
within the Closure.***

Marked Detour Provided See Attachment.

Northbound N-133 Marked Detour Provided:

At the I-680/N-133 Interchange take Eastbound I-680 to Northbound US-75 to Blair.

Southbound N-133 Marked Detour Provided:

In Blair take Eastbound US-30 to Southbound US-75 to Westbound I-680 to N-133.

This closure is necessary for grading and pavement construction on N-133.

Hawkins Construction Company is the Contractor on this Project.

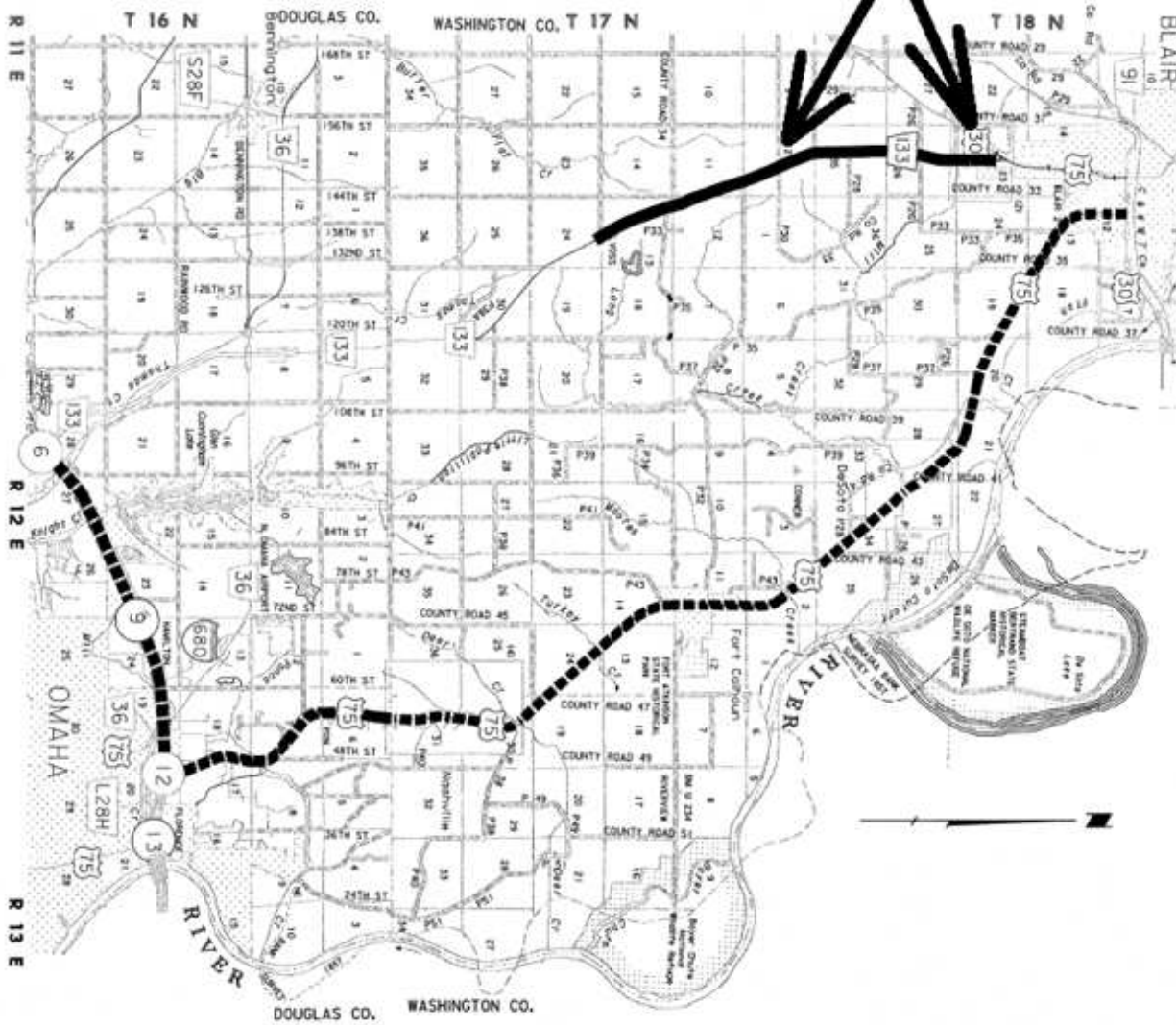
For additional information contact:

Marvin Lech PE
District Construction Engineer



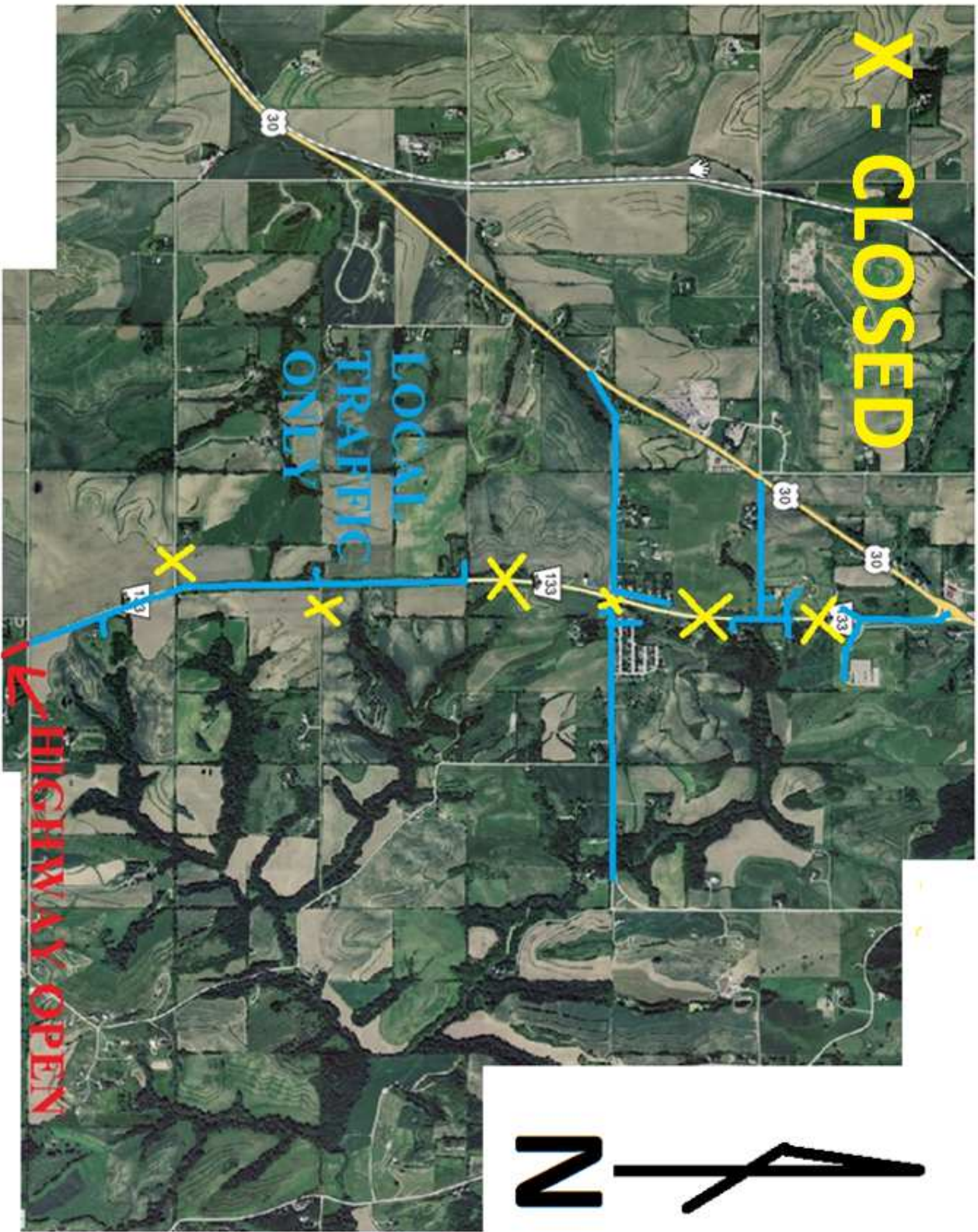
GENERAL INFORMATION

Highway N-133 CLOSED
between
US-30 & County Road P30



PROJECT LOCATION

DETOUR ROUTE




Toward
Zero
Deaths