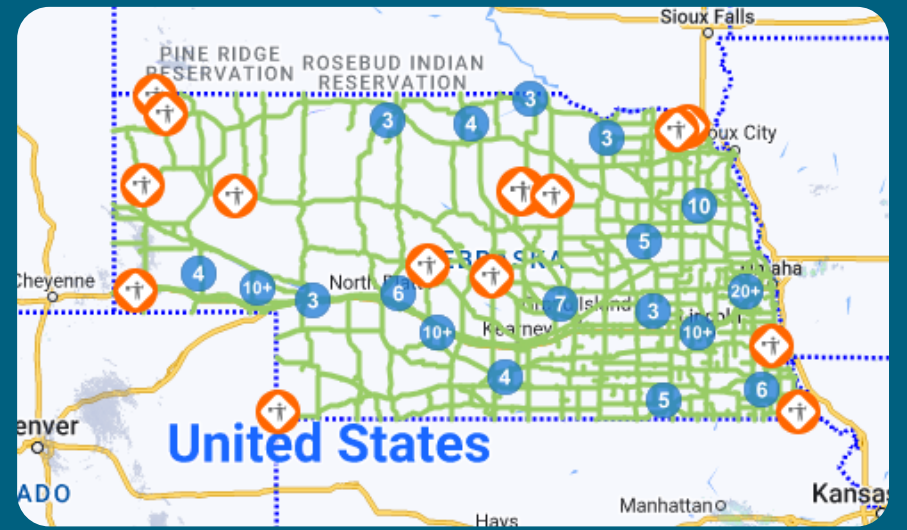




# BEFORE YOU GO

- ✓ Check [511.nebraska.gov](http://511.nebraska.gov) for current driving conditions and road closures.
- ✓ Look up the weather forecast for when you're traveling.



**GREEN: NORMAL**   **PURPLE: WET**   **BLUE: PARTIALLY CLOSED**  
**PINK: COMPLETELY CLOSED**   **RED: IMPASSABLE**



# PREPARE YOUR VEHICLE

✓ Keep your vehicle's gas tank at least half full.

✓ Check your tires.

✓ Clear your windows before you drive.

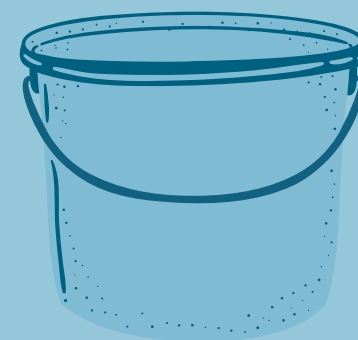
✓ Pack a Winter Emergency Kit.



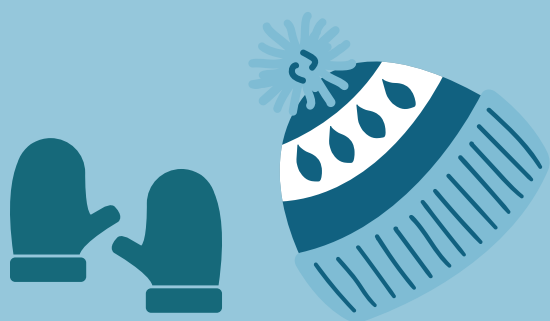
JUMPER CABLES



FLASHLIGHT



SAND OR  
SALT/ICE MELT



BLANKET &  
WARM CLOTHES

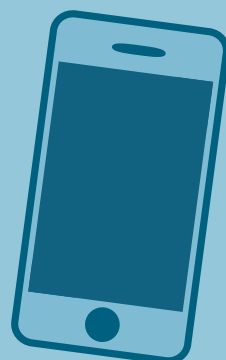
## WINTER WEATHER EMERGENCY KIT



ICE SCRAPER/  
SNOW BRUSH



FIRST AID KIT



CELL PHONE  
& CHARGER



WATER &  
SNACKS

# ON THE ROAD

- ✔ Alert someone you will be traveling and leave early so you won't be rushing.
- ✔ Buckle up and put your phone down.
- ✔ Drive cautiously and do not use your cruise control.
- ✔ Be seen. Use your low-beam headlights even during the day.
- ✔ NDOT crews are working tirelessly to clear roads and push back snow. If you spot a snowplow, give them the space they need. You need at least 3 times more space on a snowy road and at least 10 times more space on an icy road to stop as on a dry road.
- ✔ If stranded, stay in your vehicle and call \*55.