

# WELCOME!

## Columbus South Bridges

NH-30-5(131); C.N. 31983

## Public Information Open House Meeting

Please Sign In

Spanish Interpreter Available

# WELCOME!

## Public Information Open House Meeting

Please Sign In

Spanish Interpreter Available

# ¡BIENVENIDOS!

## Columbus South Bridges

NH-30-5(131); C.N. 31983

## Reunión Informativa Abierta al Público

Por favor Regístrese

Intérprete de Español Disponible

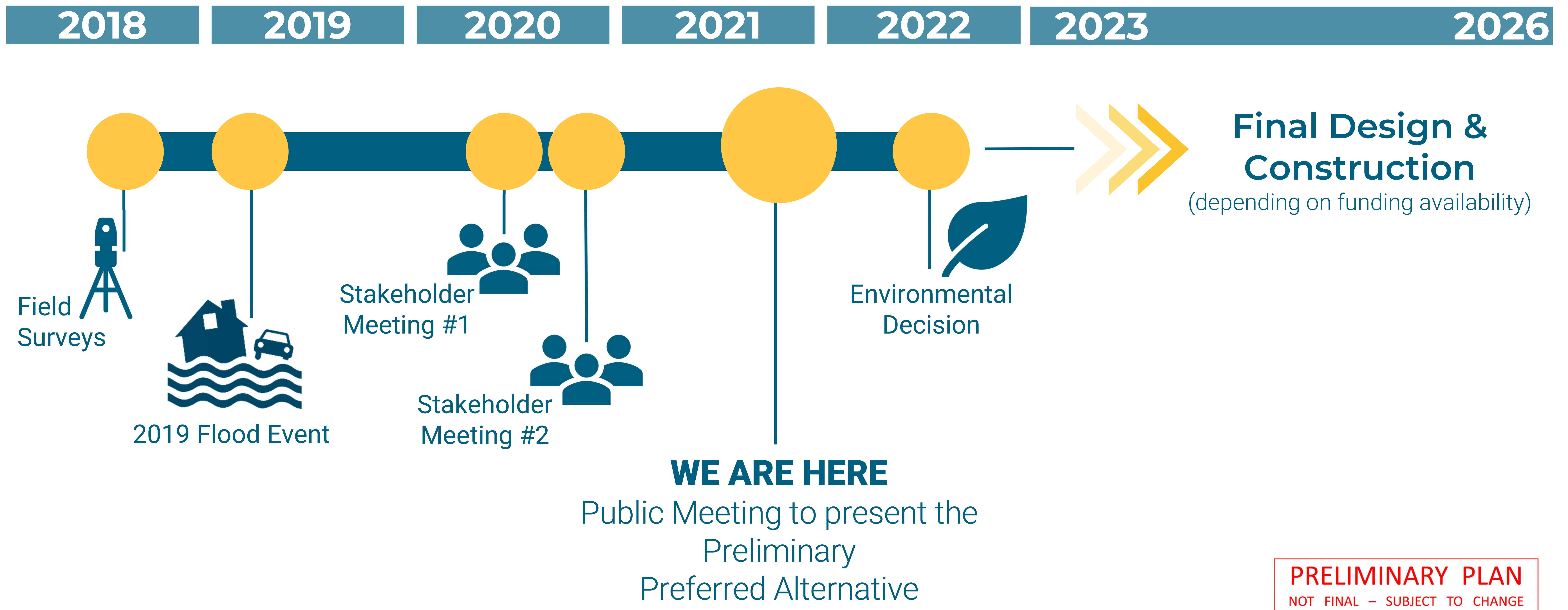
# ¡BIENVENIDOS!

## Reunión Informativa Abierta al Público

Por favor Regístrese

Intérprete de Español Disponible

# Where We Have Been >>> Where We are Headed



**PRELIMINARY PLAN**  
NOT FINAL – SUBJECT TO CHANGE

# Components of Loup River Crossing

S030 37773L: Southbound Bridge



S030 37773R: Northbound Bridge



S030 37787: Underpass



## Columbus Loup River Bridge Historic Significance

- Listed on the National Register of Historic Places (NRHP) in 1992
- Represents a culmination in truss structure design within the state
- Longest vehicular truss bridge in Nebraska aside from those crossing the Missouri River

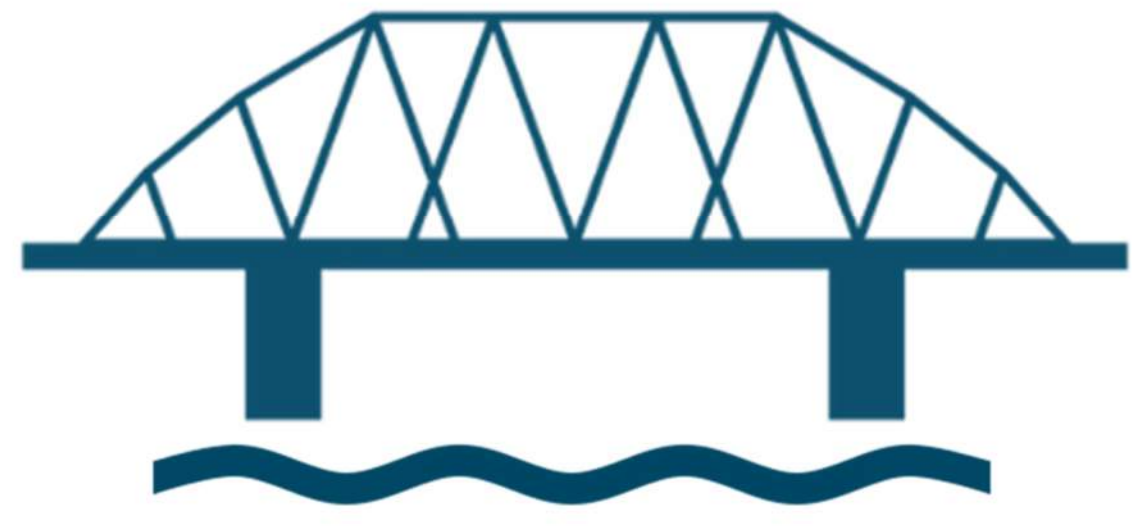
# Project Purpose

To facilitate the safe movement of people and goods along US-30/US-81 through Columbus while improving mobility, connectivity, and accessibility across the Loup River.

# Project Needs

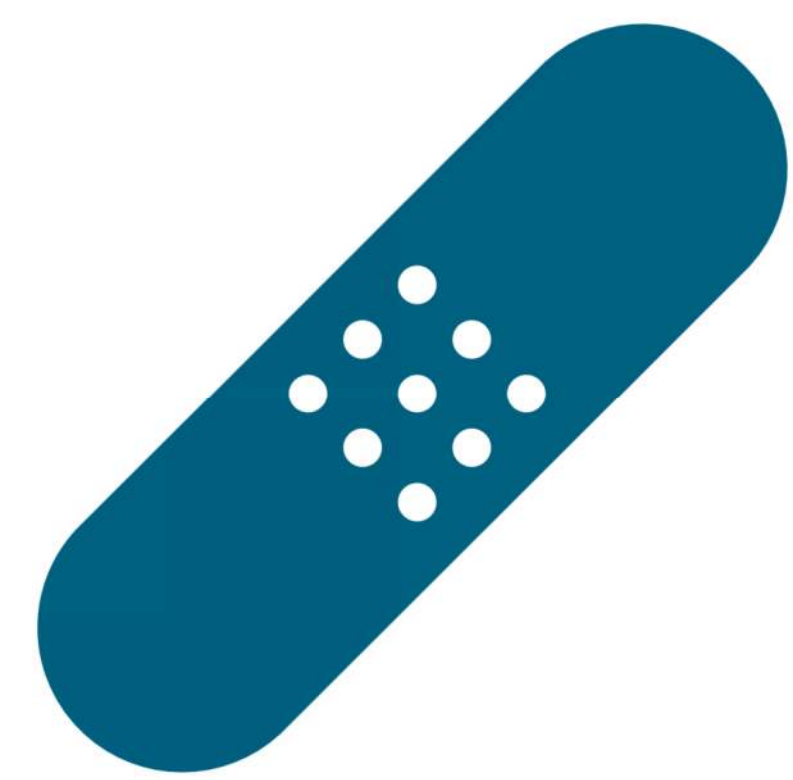
- Maintain infrastructure – address the physical condition of the river crossing, both the NRHP-eligible (historic) and non-historic age components
- Maintain a reliable transportation linkage across the Loup River
- Improve the operational performance of the crossing

# Alternatives Considered



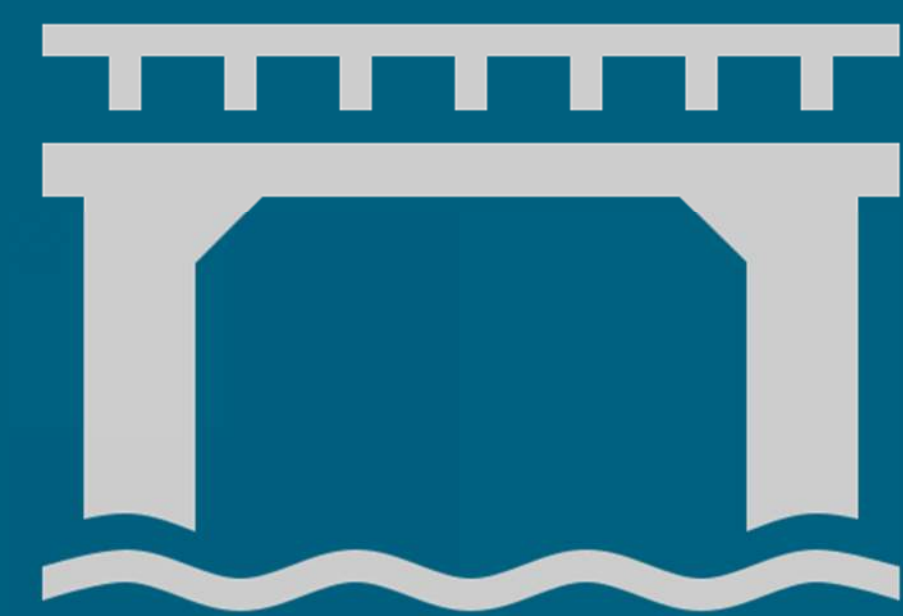
## No Build

Leave river crossing as it is today



## Rehabilitation

Make a series of major repairs to key components of the historic Columbus Loup River Bridge (SB) to extend its useful life



## Build

3 options for replacing the historic Columbus Loup River Bridge (SB) and improving the river crossing

### Purple Alternative

Construct new bridge on the existing alignment of the SB bridge

**Estimated Cost:** \$13.5 – \$15 million

**Durability:** 75 to 100 year design life

**Construction:** ~1.5 construction seasons (includes demolition)

- Southbound bridge closed
- 2-way traffic on northbound bridge
- Least impact to Pawnee Park



### Orange Alternative

Construct new bridge on alignment west of the existing SB bridge

**Estimated Cost:** \$16 – \$18 million

**Durability:** 75 to 100 year design life

**Construction:** ~1.5 construction seasons

- Maintain 2-lanes of traffic in each direction
- Greater impact to Pawnee Park, Andrew Jackson Higgins National Memorial, wetlands, forest habitat, and utilities



### Blue Alternative

Construct new bridge on an alignment east of the existing NB bridge

**Estimated Cost:** \$16.5 – \$18 million

**Durability:** 75 to 100 year design life

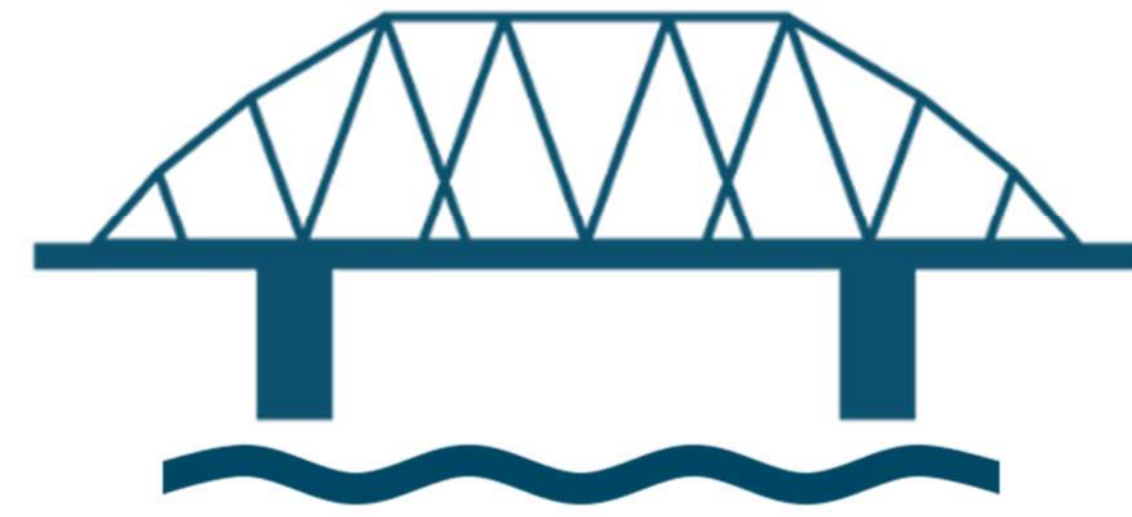
**Construction:** ~1.5 construction seasons

- Maintain 2-lanes of traffic in each direction
- Greater impact to Pawnee Park, private property, wetlands, forest habitat, and utilities



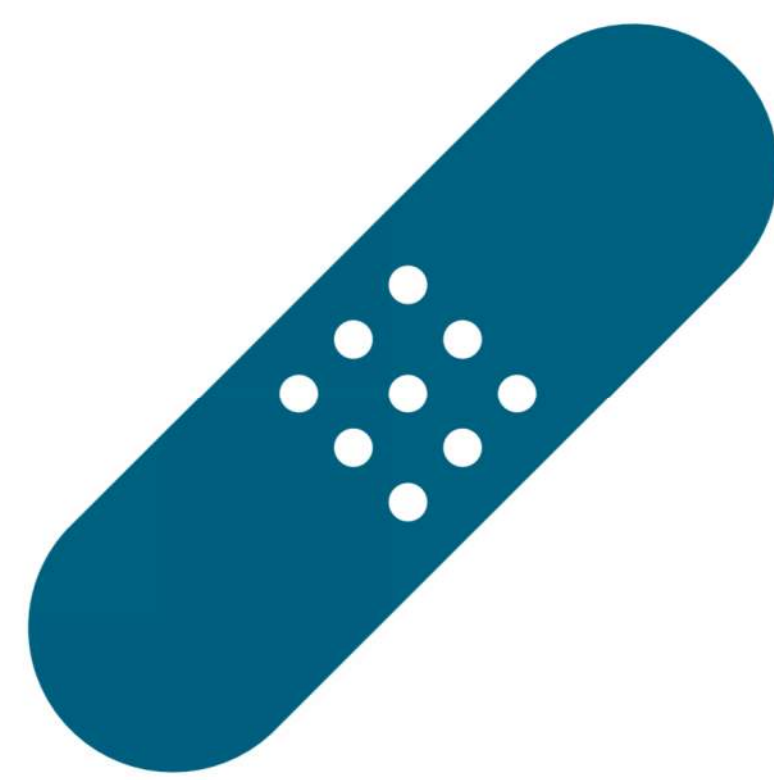


# Alternatives Considered



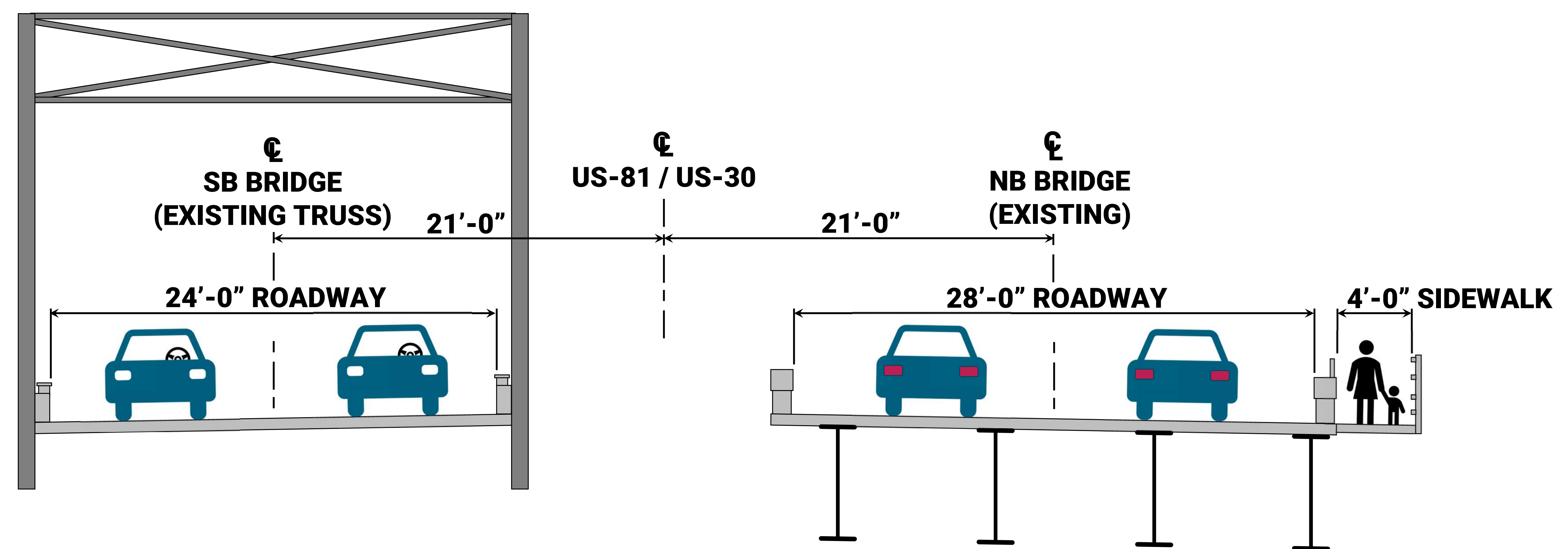
## No Build

Leave river crossing as it is today



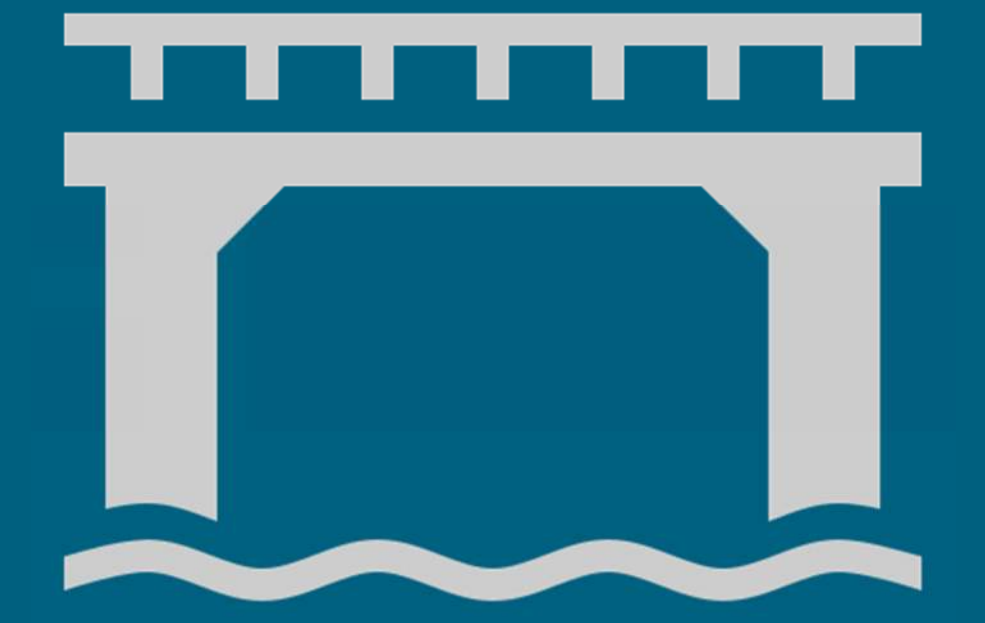
## Rehabilitation

Make a series of major repairs to key components of the historic Columbus Loup River Bridge (SB) to extend its useful life



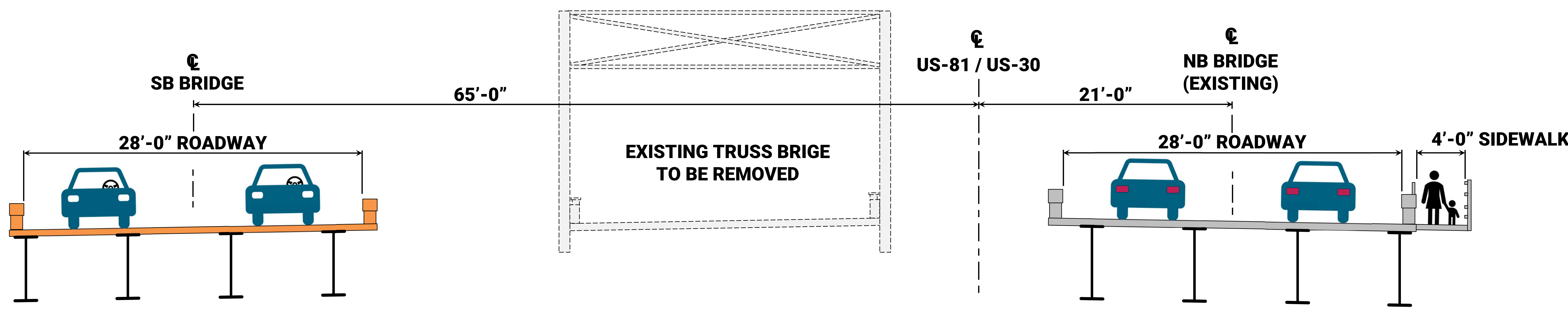
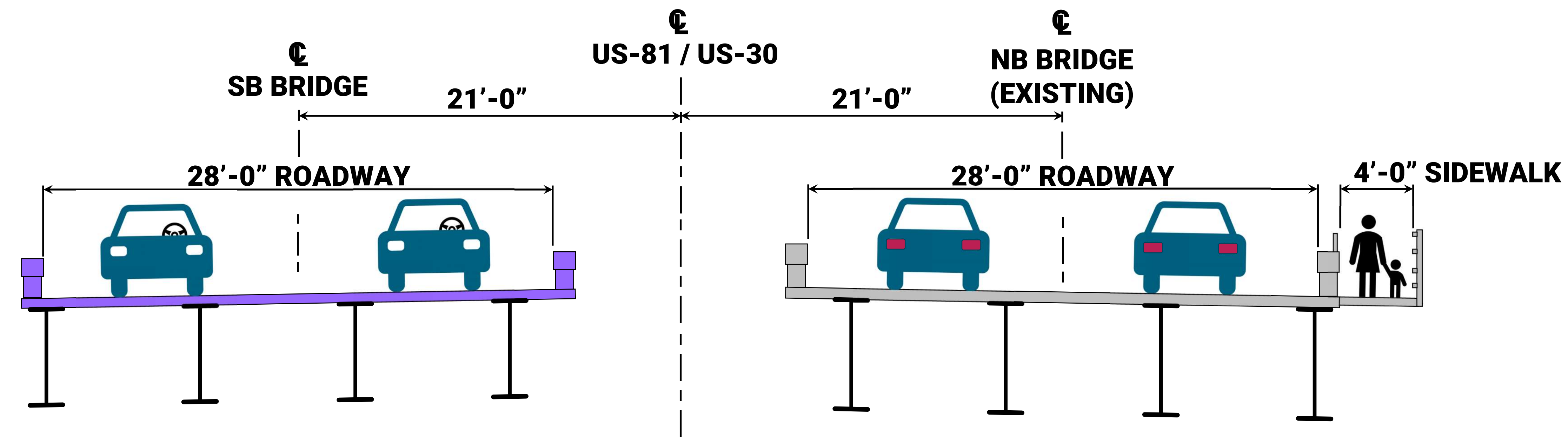
The existing river crossing looking north.  
Columbus Loup River Bridge on the left (west),  
northbound bridge on the right (east)

# Build Alternatives Considered



## Purple Alternative

Construct new bridge on the existing alignment of the SB bridge

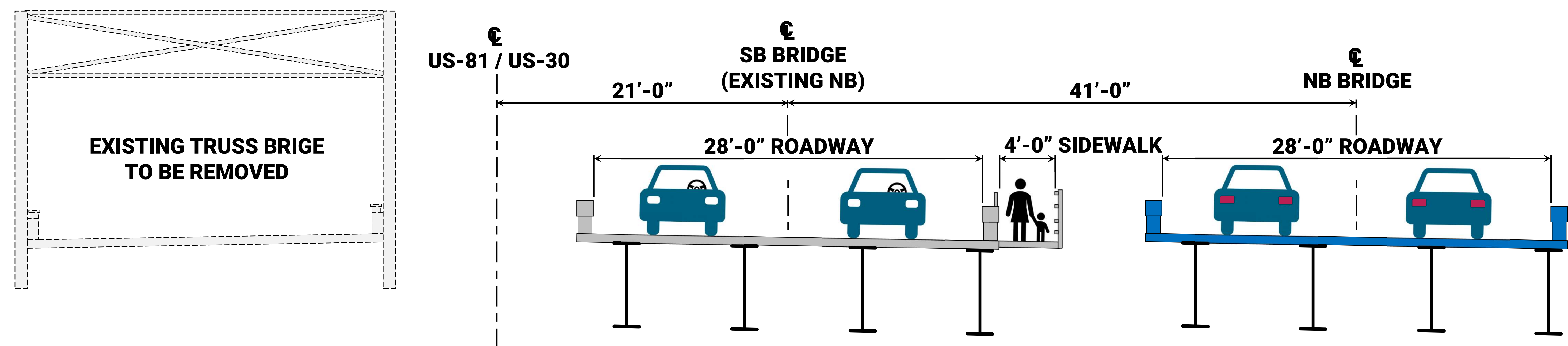


## Orange Alternative

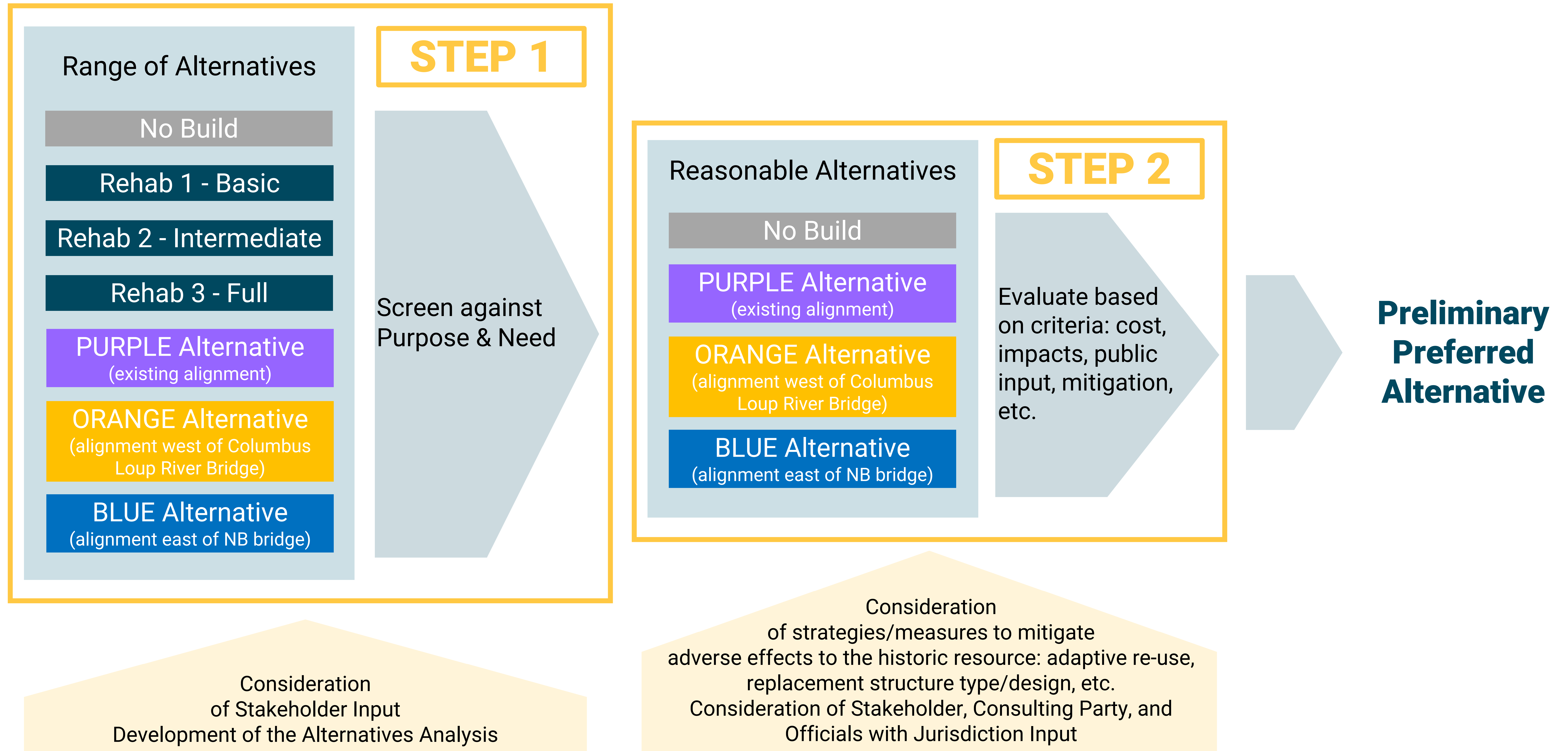
Construct new bridge on alignment west of the existing SB bridge

## Blue Alternative

Construct new bridge on an alignment east of the existing NB bridge



# Alternative Screening and Evaluation Steps



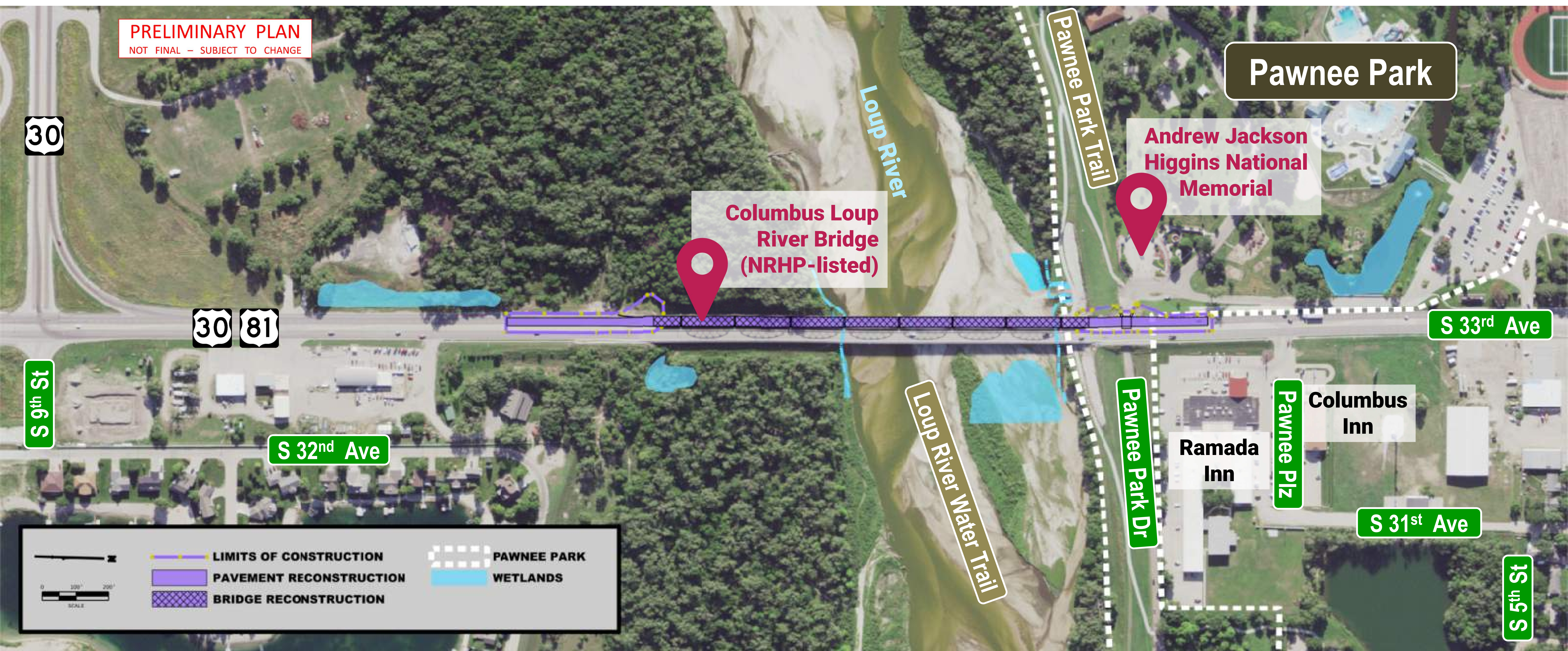
# Section 106 Process of the NHPA

- 1) **Initiate the review process** – define the proposed action/project and engage stakeholders and the public
- 2) **Identify historic properties** – define the potential area the project may affect and determine what resources are listed on or are eligible for listing on the NRHP within that area
- 3) **Assess the adverse effects of the project on historic resources** (e.g., removal of a historic bridge)
- 4) **Consider ways to avoid, minimize, or mitigate adverse effects to historic resources** (e.g., move the alignment, rehabilitate/reuse the bridge, document the history of the bridge, etc.) **WE ARE HERE**

# Historic Properties and Public Parks and Trails



# Preliminary Preferred Alternative – Construct New Bridge on Existing Alignment



# We Want to Hear from you!



## Online

NDOT website at  
[ndot.info/31983](http://ndot.info/31983)



## Email

[tony.bui@nebraska.gov](mailto:tony.bui@nebraska.gov)



## Mail

Tony Bui,  
NDOT Public Involvement  
P.O. Box 94759  
Lincoln, NE 68509-4759



## Comment Box

Leave comment sheet  
here with us tonight

**Comments will be collected through November 24, 2021.**

# ¡Queremos su opinión!



## En línea

Sitio web de NDOT en  
[ndot.info/31983](http://ndot.info/31983)



## Correo electrónico

[tony.bui@nebraska.gov](mailto:tony.bui@nebraska.gov)



## Correo

Tony Bui,  
NDOT Public Involvement  
P.O. Box 94759  
Lincoln, NE 68509-4759



## Caja de comentarios

Deja la hoja de  
comentarios aquí con  
nosotros esta noche

**Los comentarios se recopilarán hasta el 24 de noviembre de 2021.**



# Narrated Presentation

**5:00 PM**

**5:30 PM**

**6:00 PM**

**6:30 PM**

# Narrated Presentation

**5:15 PM**

**5:45 PM**

**6:15 PM**