

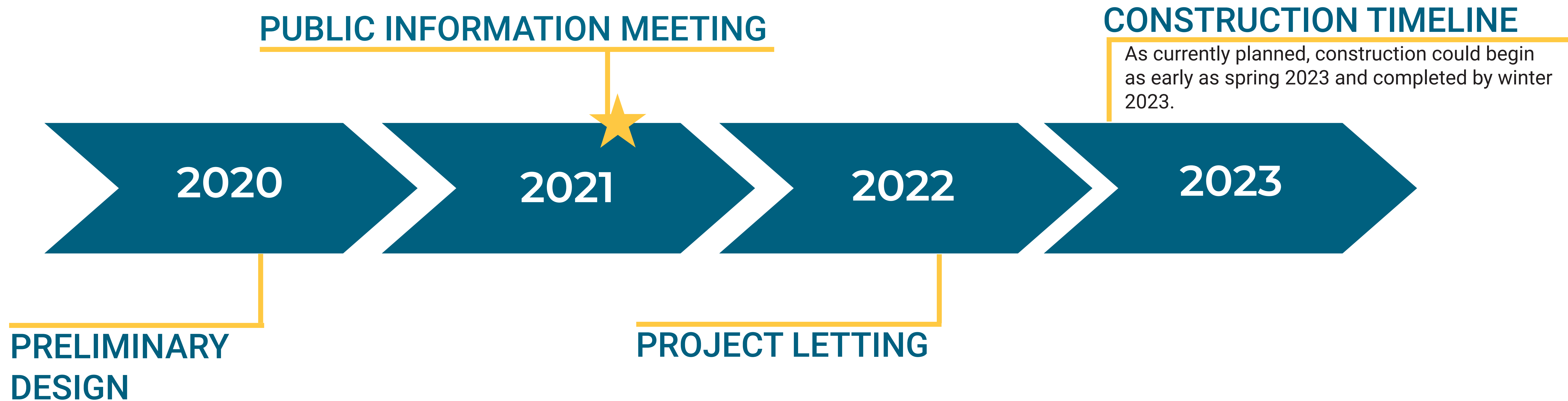
WELCOME!

In Milford

Public Information Open House Meeting

Please Sign In

PROJECT SCHEDULE



PRELIMINARY PLAN
NOT FINAL – SUBJECT TO CHANGE

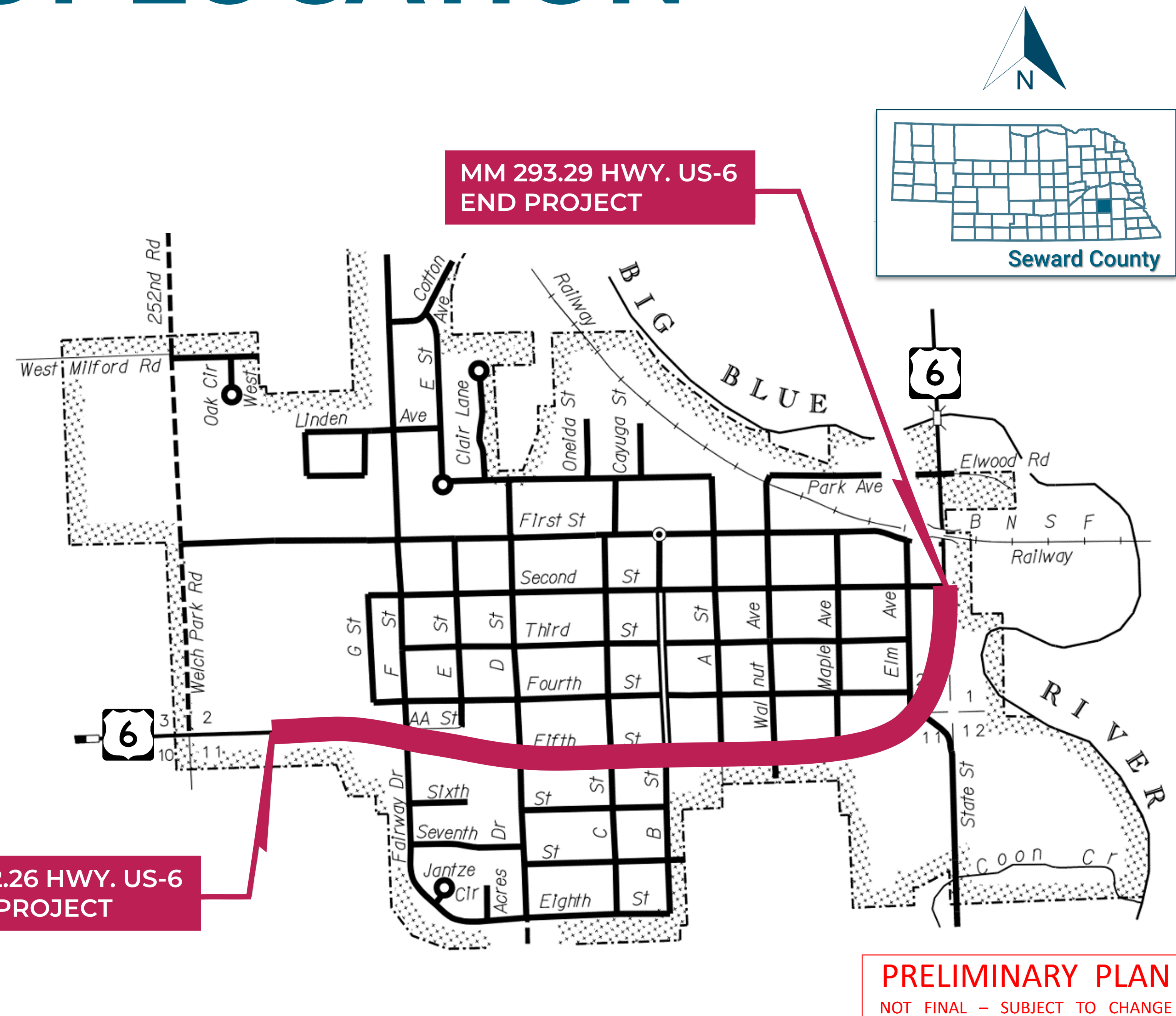
PROJECT LOCATION

PROJECT PURPOSE

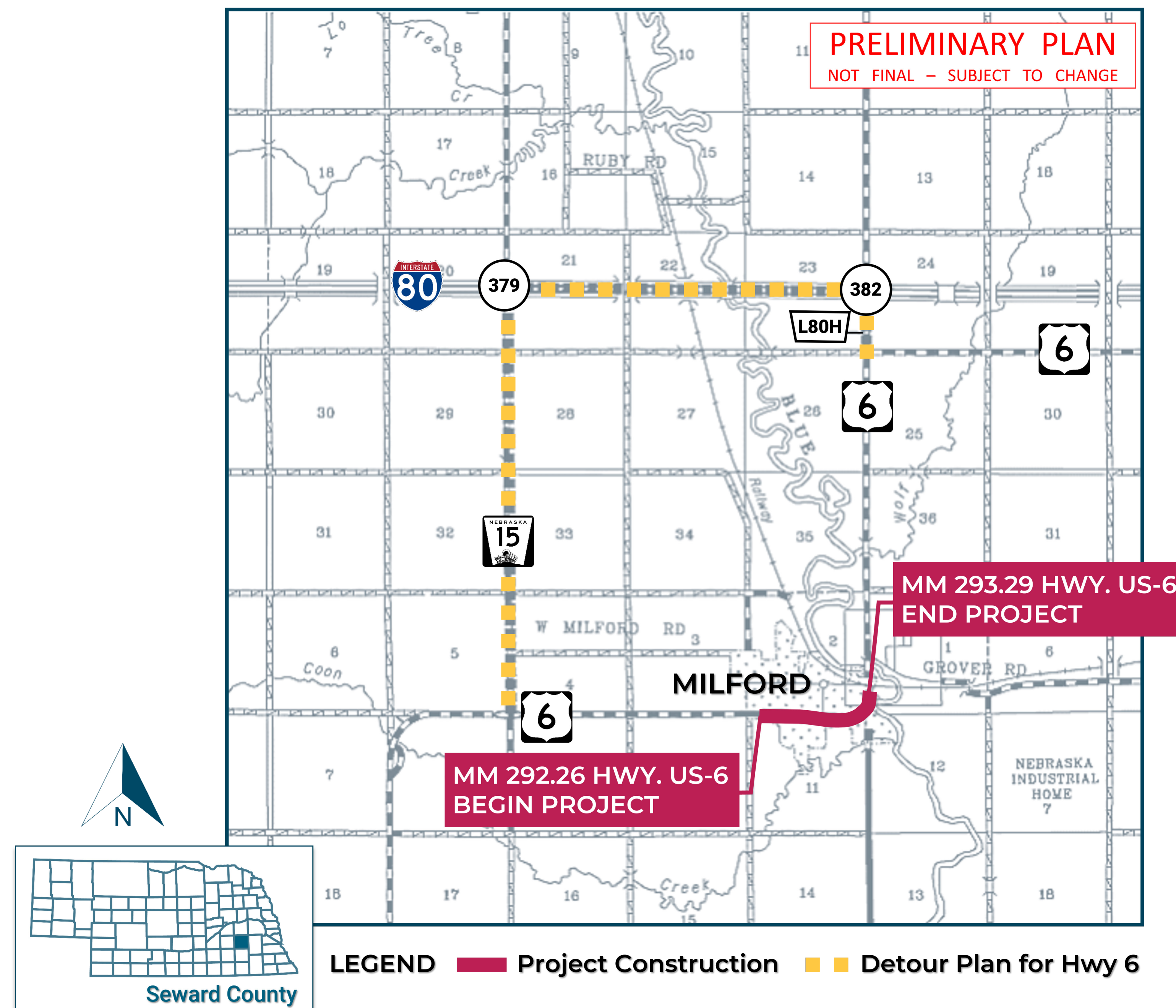
The purpose of the proposed project is to preserve the transportation asset, improve the reliability of the transportation system, and perpetuate the mobility of the traveling public.

PROJECT NEED

The need for this project is based on the condition of the existing roadway.



PROJECT DETOUR

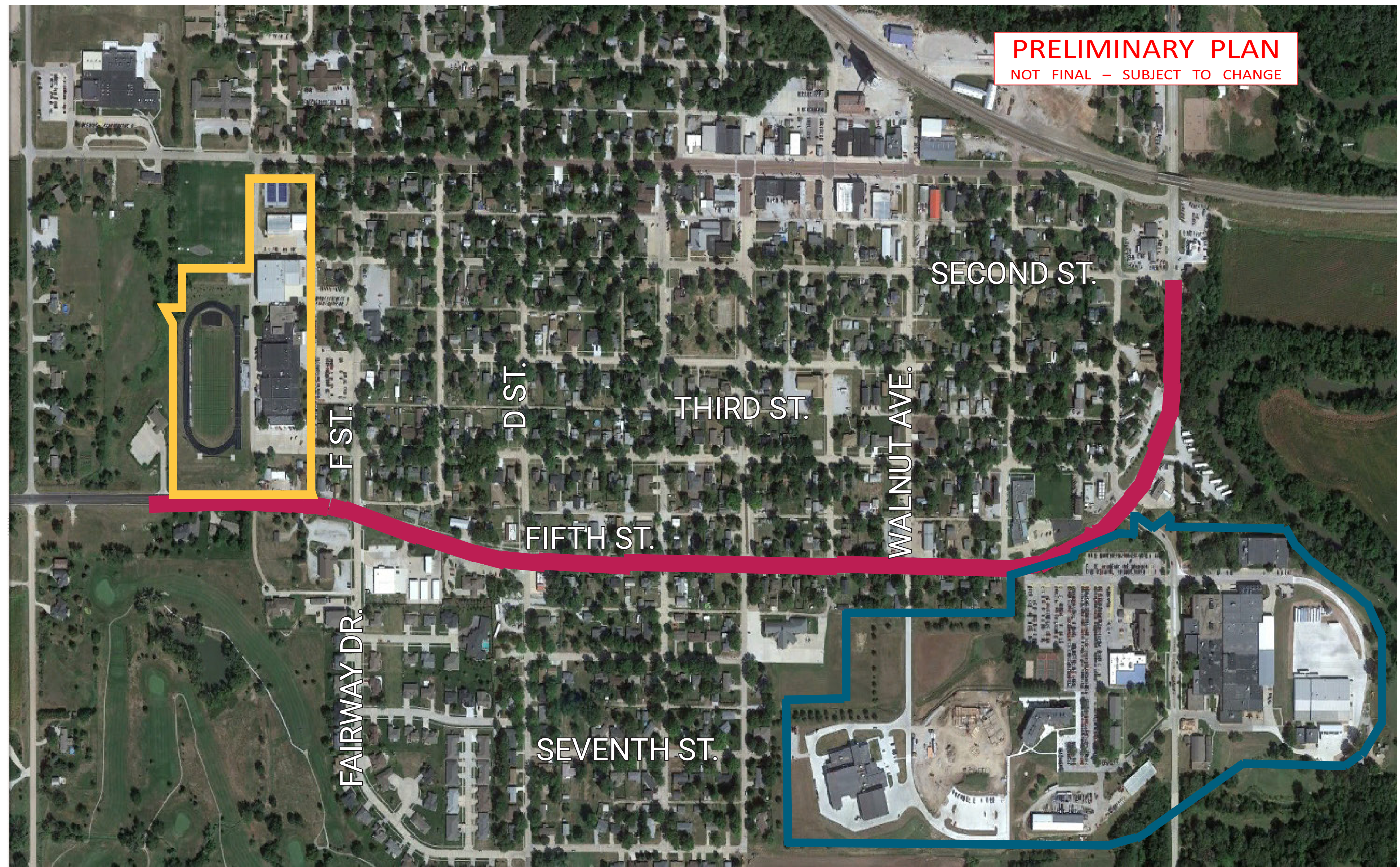


PROJECT IMPACTS

Milford High School is located in the vicinity of the proposed project; no impacts are anticipated.

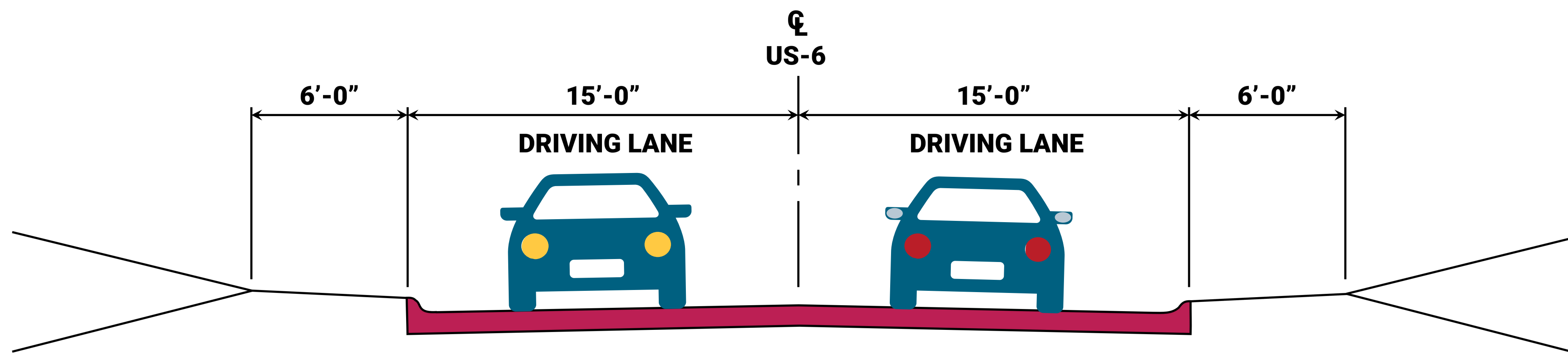
Southeast Community College, located at 600 State Street in Milford, is a historic property. Impacts to the historic property are being considered, and comments related to the historic property will be taken at this meeting.

No wetland impacts are anticipated on the proposed project. Trees would be removed due to proximity to the back of curb.

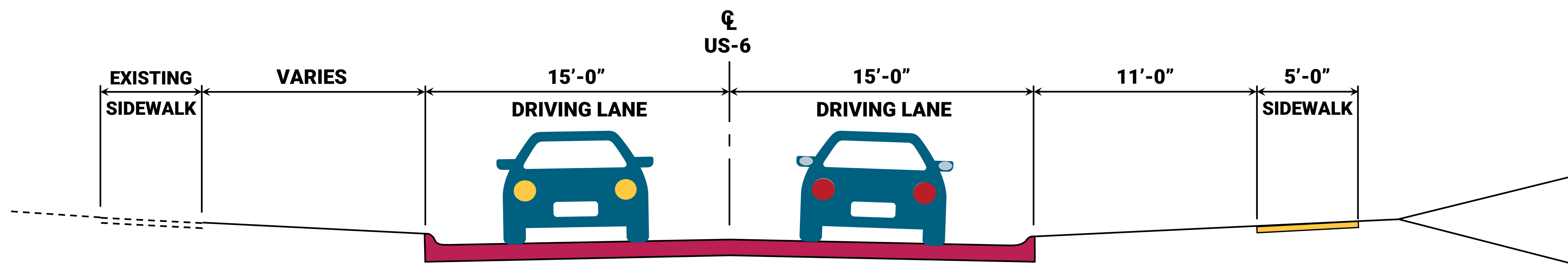


LEGEND ■ Project Construction ■ Milford High School ■ Historic Property

TYPICAL SECTIONS



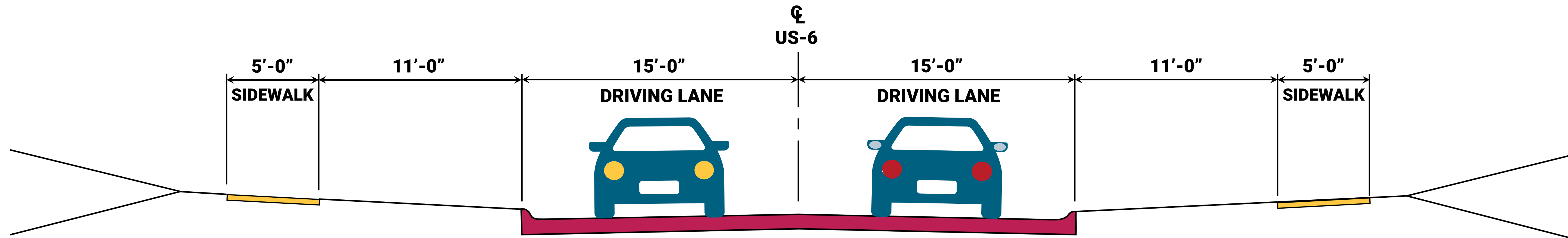
HWY. US-6 FROM BEGIN PROJECT TO F ST./FAIRWAY DR.



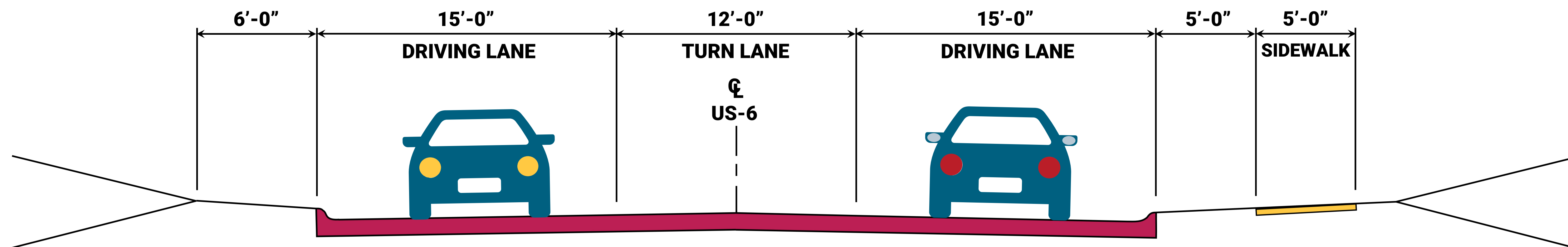
HWY. US-6 FROM F ST./FAIRWAY DR. TO D ST.

PRELIMINARY PLAN
NOT FINAL - SUBJECT TO CHANGE

TYPICAL SECTIONS



HWY. US-6 FROM D ST. TO S. MAPLE AVE.



HWY. US-6 FROM S. MAPLE AVE. TO 2ND ST.

PRELIMINARY PLAN
NOT FINAL - SUBJECT TO CHANGE

WE WANT TO HEAR FROM YOU!

Complete a comment form tonight before
you leave, online or mail one in!



Project Contacts

Tony Bui, NDOT Public Involvement Manager
PO Box 94759
Lincoln, NE 68509-4759
Phone: 402-479-4994
Email: tony.bui@nebraska.gov

Thomas Goodbarn, NDOT District 1 Engineer
302 Superior Street
Lincoln, NE 68521
Phone: 402-471-0850
Email: thomas.goodbarn@nebraska.gov