

NEBRASKA US-275

NORFOLK TO WISNER

September 10, 2019

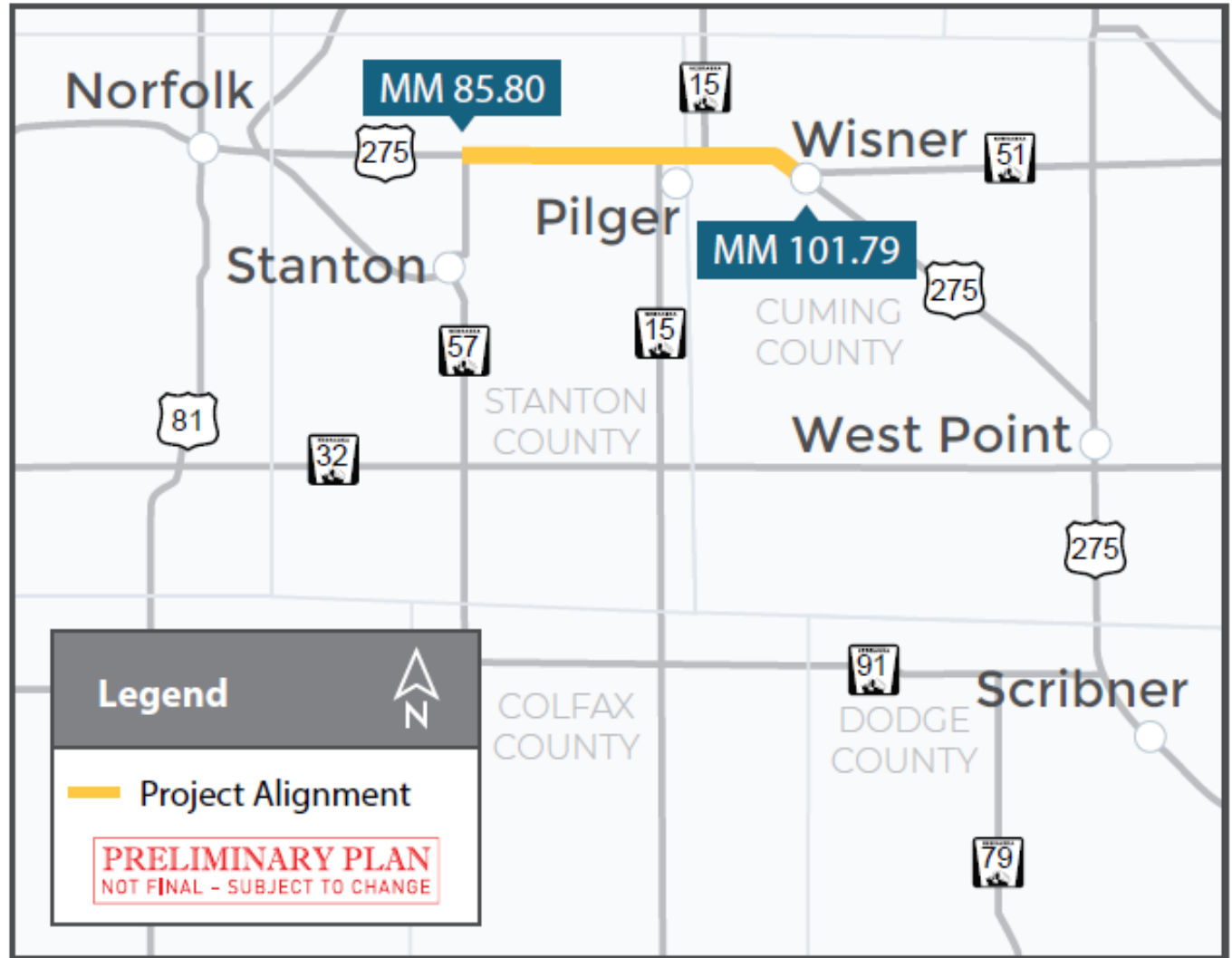
Public Information Meeting



U.S. Department of Transportation
Federal Highway Administration

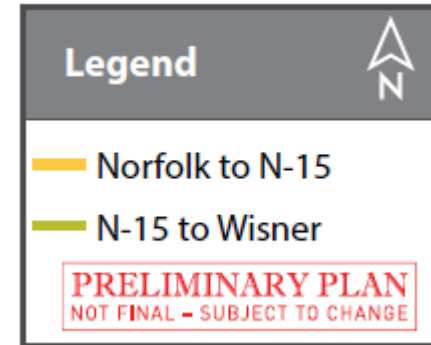
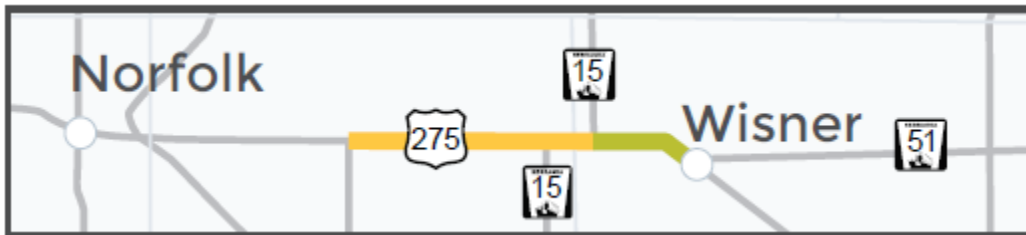
NEBRASKA
Good Life. Great Journey.

PROJECT LOCATION



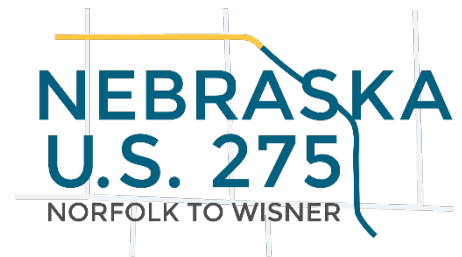
SCHEDULE & COST

- Development of preliminary engineering and environmental activities.
- NDOT has applied for additional federal funding through a BUILD Grant.
- Project costs are estimated at \$63 million.



PROJECT PURPOSE

- **Fulfill legislative intent** to continue development of the expressway system identified in the 1988 Nebraska Highway Needs Study.
- **Improve regional connectivity** for vehicles in northeast Nebraska, including commercial vehicles, by providing important expressway connections with Nebraska Highway 57 (N-57), N-15 & N-51, while **maintaining convenient highway access** for communities within the area.
- **Reduce the annual corridor delay** of 477,300 vehicle hours between Norfolk and Wisner, which is expected to worsen as traffic volumes increase in this area.
- **Maximize use of existing transportation infrastructure**, including connecting highways, and existing right-of-way (ROW) and improve the reliability and condition of existing facilities.



2 PLUS 2 APPROACH

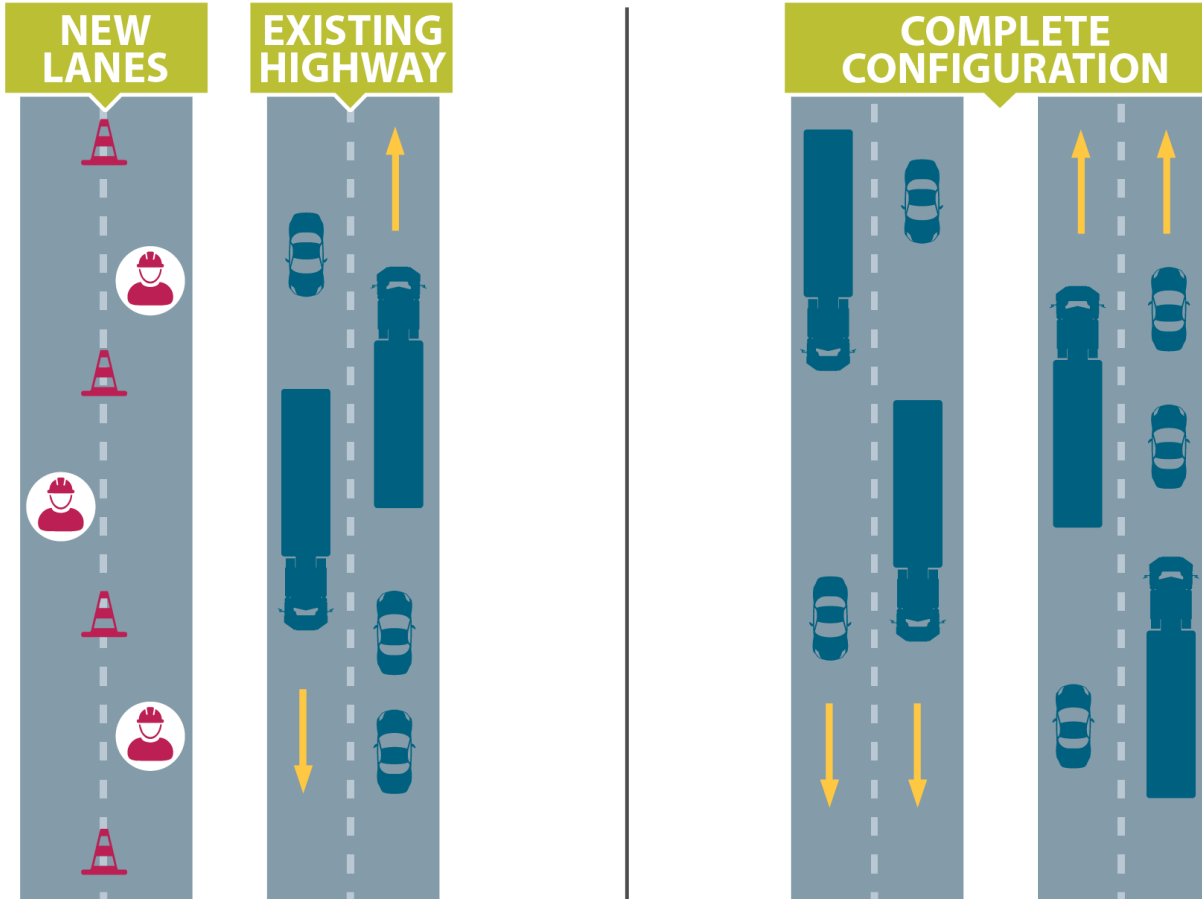
Criteria

- Existing lanes
 - Remain in place
 - Asset preservation
 - Resurface
- New lanes
 - Offset of existing
 - New & Reconstruction Standards

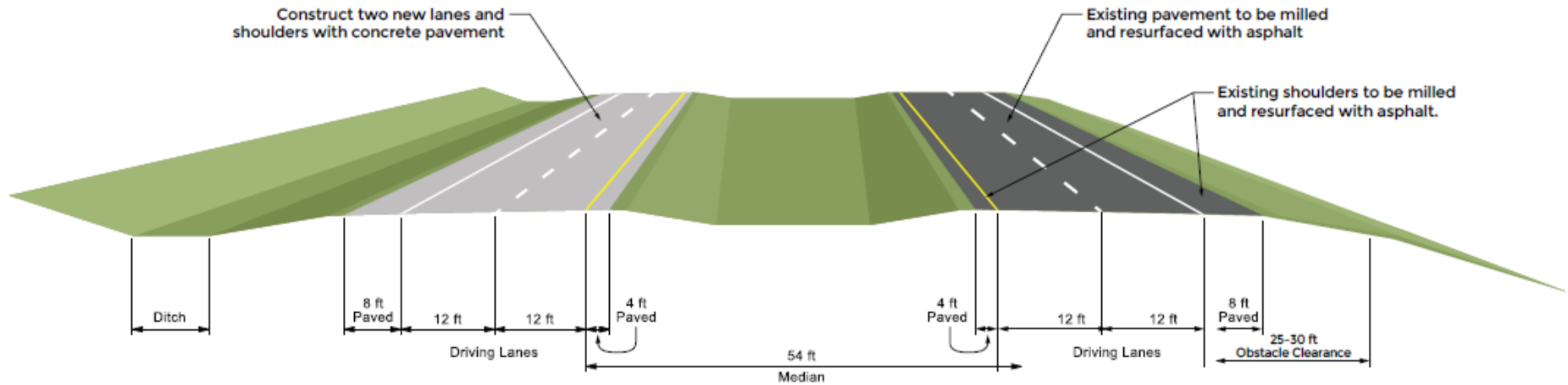
Goals

- Stay consistent with 2+2 concept
- Minimize impacts to existing lanes
 - Analyze and balance the system

SCOPE OF WORK



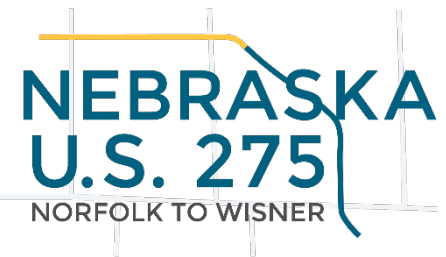
TYPICAL SECTION



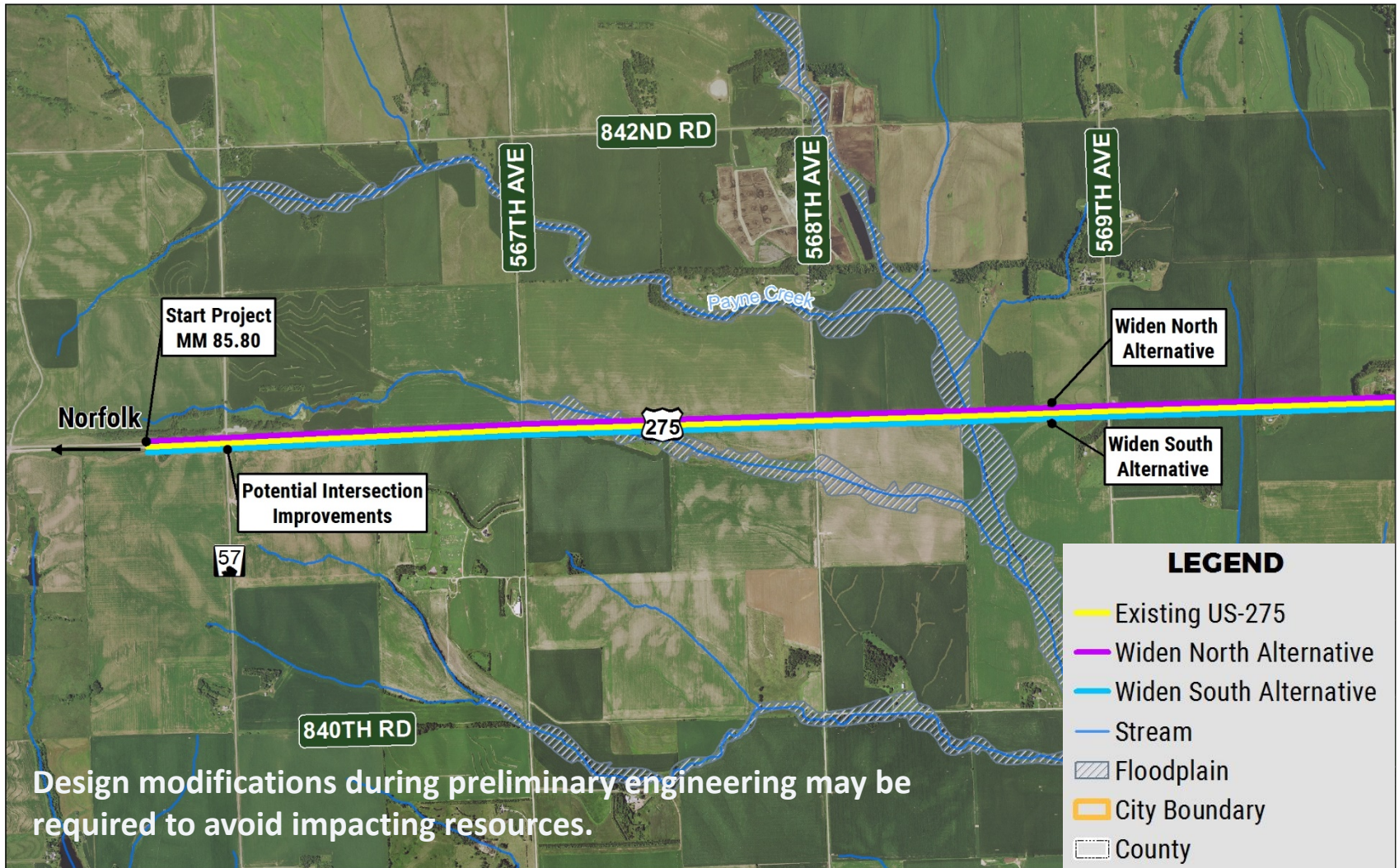
Expressway Section

(Existing lanes may be either EB or WB)

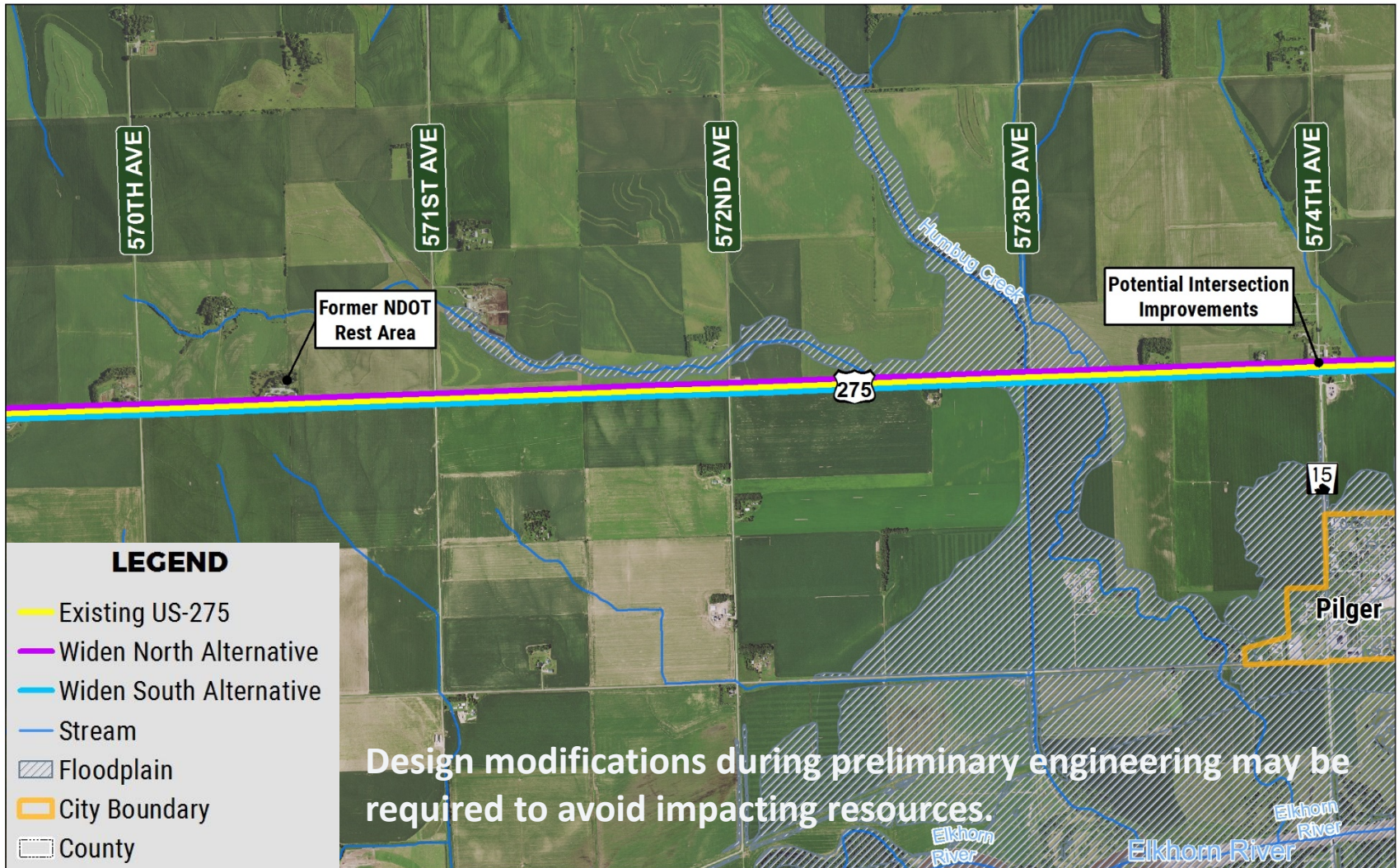
PRELIMINARY PLAN
NOT FINAL - SUBJECT TO CHANGE



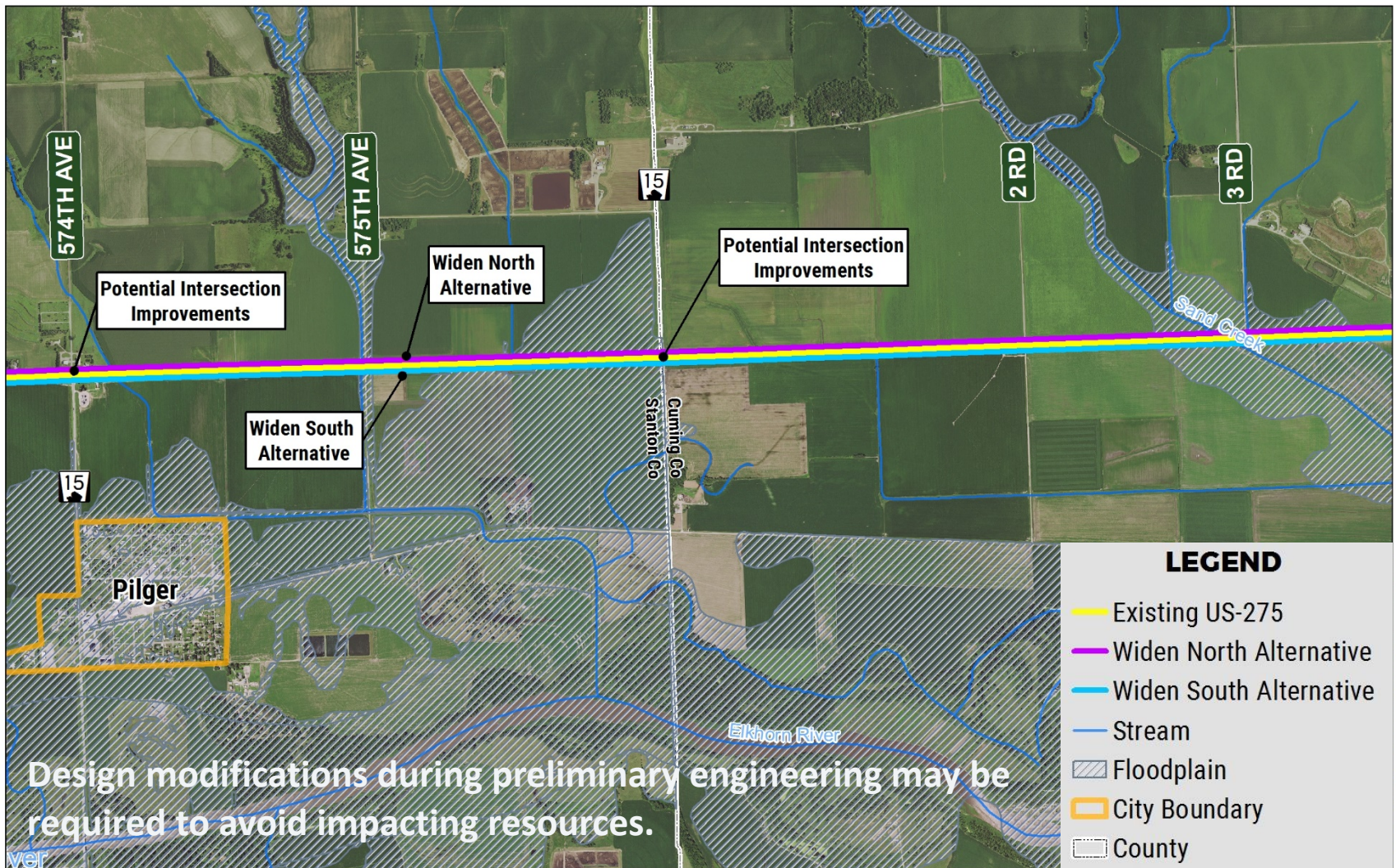
ALTERNATIVES



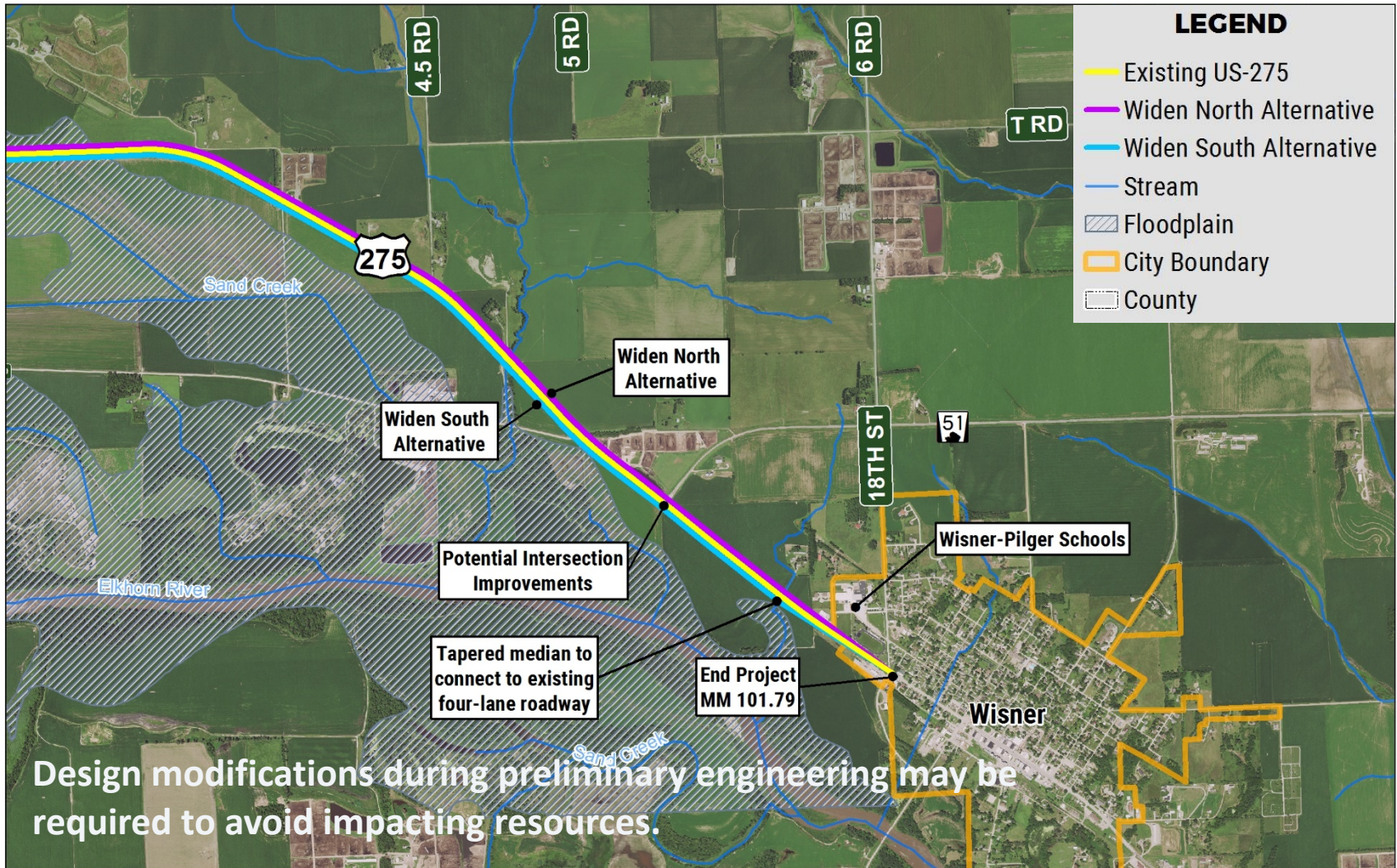
ALTERNATIVES



ALTERNATIVES



ALTERNATIVES



FEEDBACK



<https://dot.nebraska.gov/projects/>



Questions or comments should be submitted by September 25, 2019 to:

Sarah Soula

Public Involvement Manager

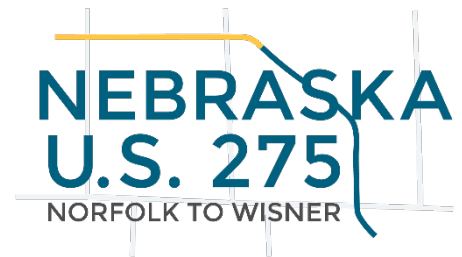
Nebraska Department of Transportation

PO Box 94759

Lincoln, NE 68509-4759

Sarah.soula@Nebraska.gov

Tel (402) 479-4871



THANK YOU!