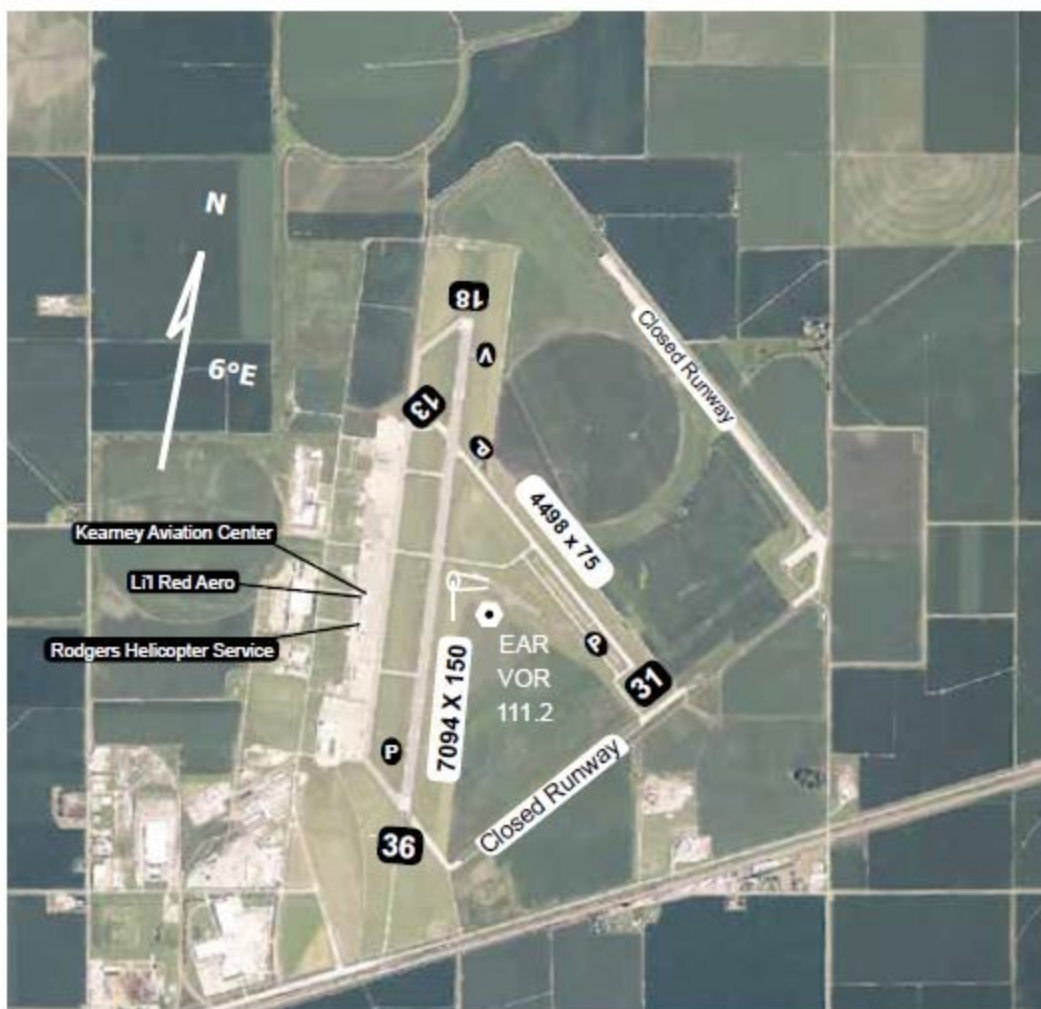


Kearney (EAR)

Elevation 2131'

AWOS III 123.875 (308-237-5608)	Minneapolis Center 119.4	CTAF 123.0 L
------------------------------------	-----------------------------	------------------------



Runway	Surface	Traffic Pattern	Runway Lights
18 / 36	Asphalt	1000-LH / 1000-LH	HIRL
13 / 31	Concrete	1000-LH / 1000-LH	MIRL
Airport Manager	Jim Lynaugh		308-234-2318
FBO's			
Kearney Aviation Center	308-233-5800	7 a.m. - 8 p.m.	
Rodgers Helicopter Service	308-234-3948	Li'l Red Aero	308-234-1635
100 LL & Jet A			

Kearney Regional Airport

N 40°43.62' W 99°00.41'