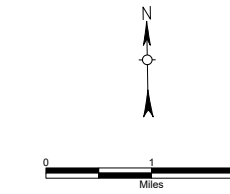
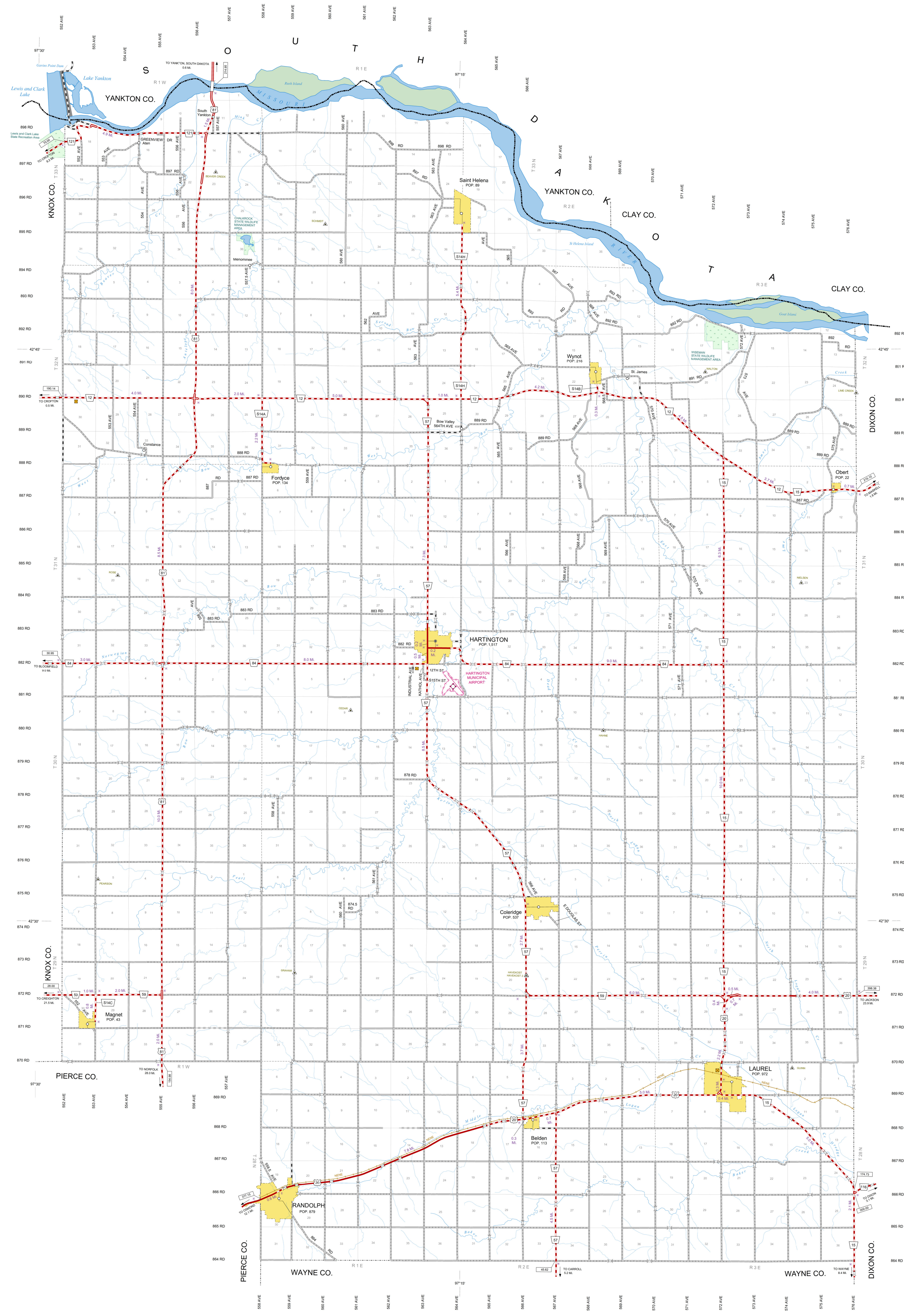
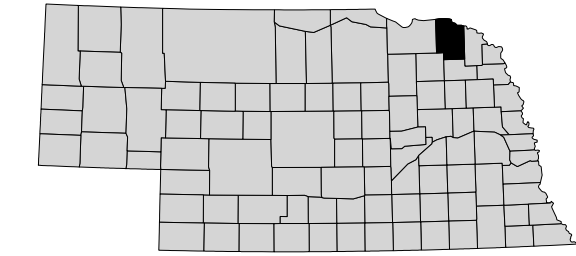


# GENERAL HIGHWAY MAP CEDAR COUNTY NEBRASKA 2022



- |   |  |
|---|--|
| <b>STATE HIGHWAYS</b>   | <b>CULTURAL FEATURES</b>   |
| <ul style="list-style-type: none"> <li> Double Highway with Full Access</li> <li> Control Highway</li> <li> Multiple Lane Unimproved Highway</li> <li> Concrete Block Surface</li> <li> Asphalt/Bituminous Surface</li> <li> Gravel or Crushed Rock</li> </ul>  | <ul style="list-style-type: none"> <li> State Capitol</li> <li> County Seat</li> <li> State Game and Parks Area</li> <li> County Courthouse</li> <li> Highway Maintenance Yard</li> <li> Weigh Station</li> <li> Fuel Area</li> <li> Commercial or Memorial Airport</li> </ul> |
| <b>LOCAL ROADS</b>  | <b>AREA FEATURES</b>   |
| <ul style="list-style-type: none"> <li> Concrete Block Surface</li> <li> Asphalt/Bituminous Surface</li> <li> Gravel or Crushed Rock</li> <li> Unimproved Road</li> <li> Private Road</li> <li> Shaded or City Center</li> </ul>  | <ul style="list-style-type: none"> <li> Indian Reservation Area</li> <li> National Area</li> <li> State Game and Parks Area</li> <li> Incorporated City or Village</li> <li> Unincorporated City or Village</li> <li> Local Map Boundary</li> </ul>                            |
| <b>ROADWAY IDENTIFIERS</b>  | <b>BOUNDARIES</b>  |
| <ul style="list-style-type: none"> <li> ICAD 80-AD 815 Numbered Street</li> <li> Iowa Numbered Road</li> <li> U.S. Numbered Road</li> <li> State Numbered Road</li> <li> State Numbered Spur</li> <li> State Numbered Loop</li> <li> Highway Reference Post Number</li> <li> Mileage Post Number</li> </ul> | <ul style="list-style-type: none"> <li> State Boundary</li> <li> County Boundary</li> <li> Township Line</li> <li> Section Line</li> <li> Airport Boundary</li> </ul>  |
| <b>STRUCTURAL FEATURES</b>  | <b>MEASUREMENT SYSTEMS</b>   |
| <ul style="list-style-type: none"> <li> Highway Bridge</li> <li> Passover Underpass</li> <li> Pipeline Underpass</li> <li> Cable-Crossed</li> <li> Railroad</li> <li> Railroad Underpass</li> <li> Railroad Overpass</li> </ul>   | <ul style="list-style-type: none"> <li> Mile and Longitude</li> <li> Latitude and Longitude</li> <li> Transportation Station</li> <li> Distance Between Points</li> </ul>  |
| <b>WATER FEATURES</b>   |  |
| <ul style="list-style-type: none"> <li> Wide River</li> <li> River</li> <li> Natural Creek</li> <li> Unnatural Creek</li> <li> Longspan Ditch or Canal</li> <li> Reservoir, Pond, or Lake</li> </ul>  |  |



This map is to be used for information only and is not intended to show ownership or to be definitive on which roads are public under Nebraska Law. The Nebraska Department of Transportation makes no warranty, guarantee or representation for the accuracy of the information and assumes no liability for errors or omissions. Any inaccuracies should be reported to NDOT.