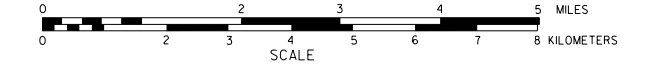


GENERAL HIGHWAY MAP WEBSTER COUNTY NEBRASKA

PREPARED BY THE
DEPARTMENT OF ROADS
GIS/MAPPING SECTION
IN COOPERATION WITH THE
U.S. DEPARTMENT OF TRANSPORTATION
FEDERAL HIGHWAY ADMINISTRATION
2011



REVISION HISTORY	
DATE	REVISION
APRIL 2011	CO. HIGHWAY SUPERINTENDENT
JAN. 2012	CO. ROAD CLOSED PETITIONS 243, 238, 231
JAN. 2012	COUNTY
APR. 2014	CO. ROAD CLOSED PETITIONS 243, 244

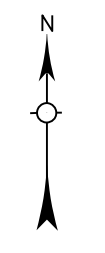
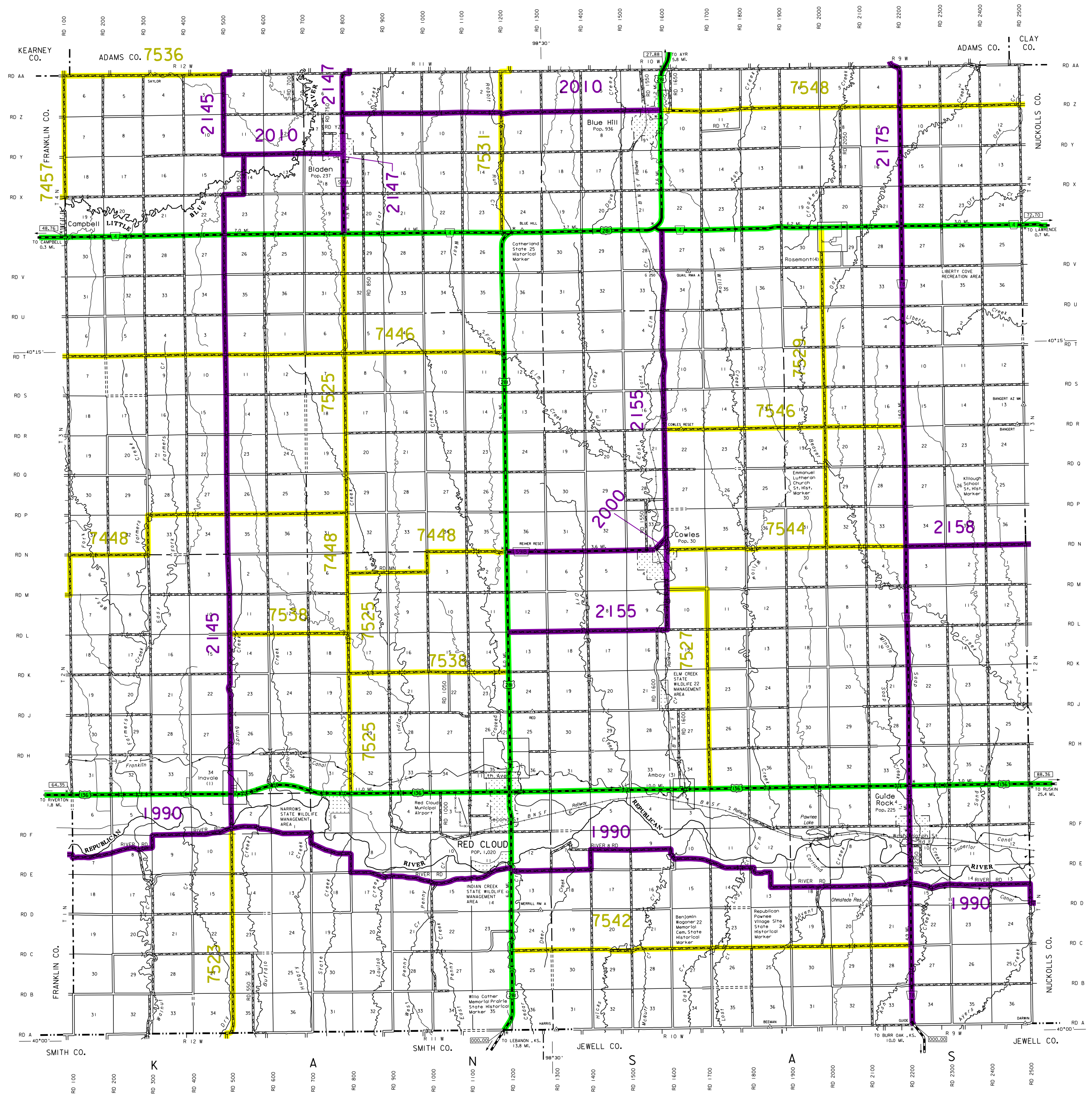
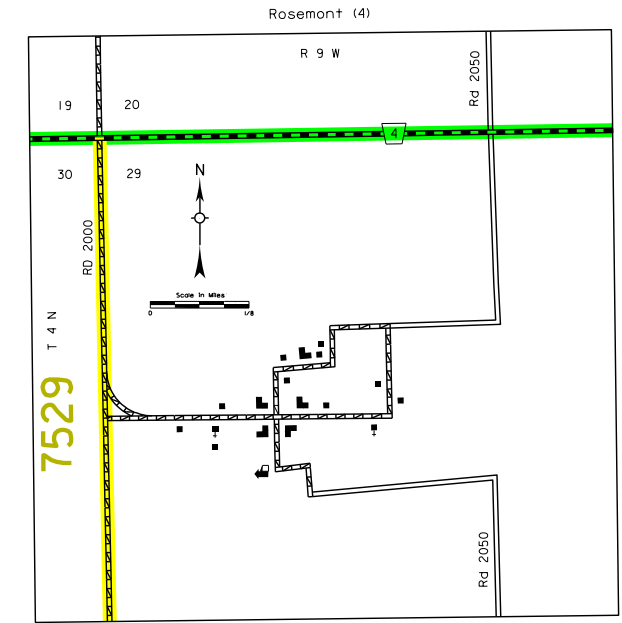
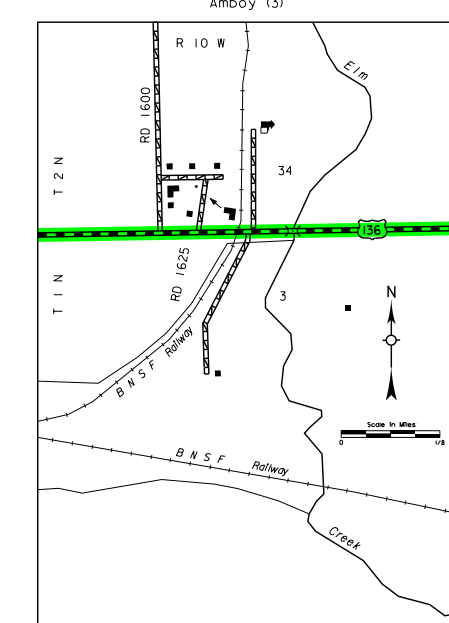
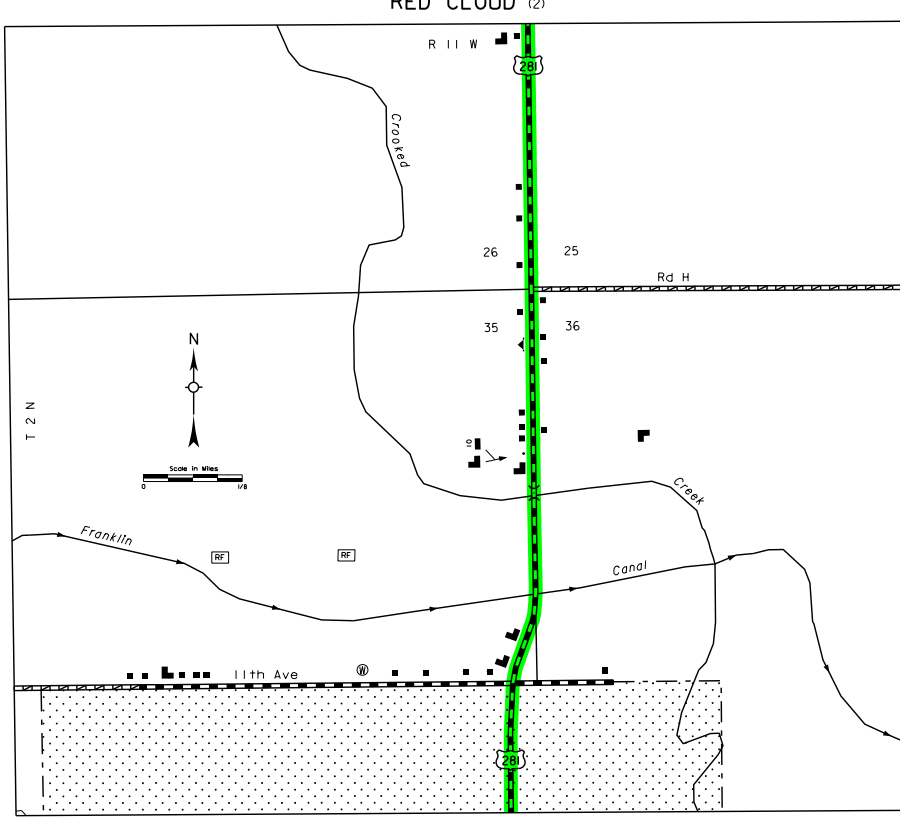
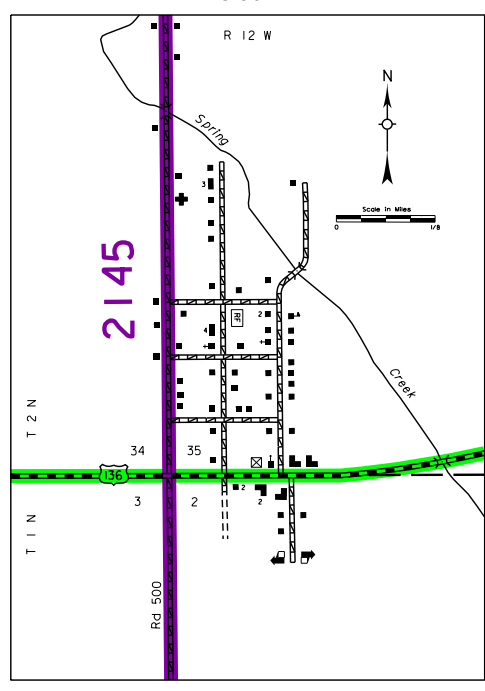
LEGEND

- Primitive Road
- Unimproved Road
- Gravel or Grouted Road
- Asphalt/Bituminous Surface
- Multiple Lane Undivided Highway
- Major Arterial Surface
- Concrete/Asphalt Surface
- Multiple Lane Divided Highway
- Concrete/Asphalt Surface
- Interstate Highway with Full Control of Access
- Side Roads and Streets
- 911 Named/Numbered Roads
- Interstate Highway
- US-Numbered Highway
- State-Numbered Highway
- State-Numbered Highway Spur
- State-Numbered Highway Link
- Highway Reference Post Number
- Interstate Exit Number
- Wide Street
- Narrow Street
- Irrigation Ditch
- Reservoir, Pond or Lake
- Reservoir, With Dam
- Highway Bridge Any Type Over 20 Feet
- Small Bridges-Closely Spaced
- Truss Bridge
- Passion Underpass
- Passion Overpass
- Railroad Overpass
- Railroad Underpass
- Dam with Road on Top
- Cattle Guard
- Dwelling
- Row of Dwellings
- Cemetery
- Church or Other Religious Institution
- Church with Cemetery Adjacent
- Hospital
- Business
- Industrial Plant
- Filling Station
- Grain Elevator
- Aggregate Pile
- Agricultural Experimental Station
- Educational Institutions
- Public Use Area
- Recreational Facilities
- Rest Area
- Ranger Station
- Fire Station
- Community Hall
- Correctional Institution
- Tourist Court or Motel
- Monument-Scout
- Museum
- Firestation
- Courthouse
- Armory
- Post Office
- Highway Maintenance Yard
- Dump Area
- Sewage Disposal Plant
- Water Supply Stand Pipe
- Road or RV Station
- Height Station or Port of Entry
- Commercial or Municipal Airport
- Airport with Fenced Runways
- State Boundary
- County Boundary
- Township Line
- Section Line
- Corporate Limit Lines
- Parks and Other Reservations
- Boundary Limits of Area Shown in Enlargements Use Enlargement for Authority
- State Capital
- County Seat
- Other Cities and Villages
- Incorporated City or Village
- Triangulation Station
- Points Between Which Distances Are Measured Indicated Truck
- Latitude and Longitude

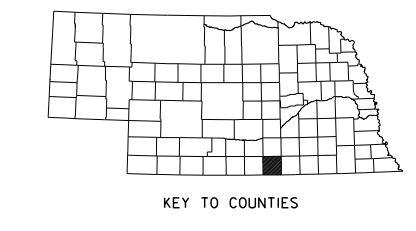
LEGEND
NATIONAL FUNCTIONAL CLASSIFICATION

- INTERSTATE
- OTHER FREEWAYS & EXPRESSWAYS
- OTHER PRINCIPAL ARTERIALS
- MINOR ARTERIAL
- MAJOR COLLECTOR
- MINOR COLLECTOR
- URBANIZED BOUNDARY

All Roads Not Otherwise Indicated Are Classified As Local.
FHWA Approval: May 28, 2015.



LAMBERT CONFORMAL CONIC PROJECTION
1983 NORTH AMERICAN DATUM
NEBRASKA COORDINATE SYSTEM



POPULATION AS OF 2010 CENSUS
STATE HIGHWAYS CONNECTED TO 2011

This map is to be used for information only and is not intended to show ownership, or to be used as a substitute for any other official map. The Nebraska Department of Roads does not warrant, guarantee, or represent for the accuracy of this information and assumes no liability for errors or omissions. Any inconsistencies should be reported to NDOR.