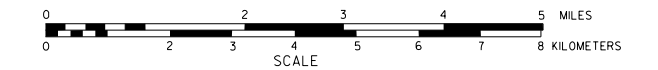
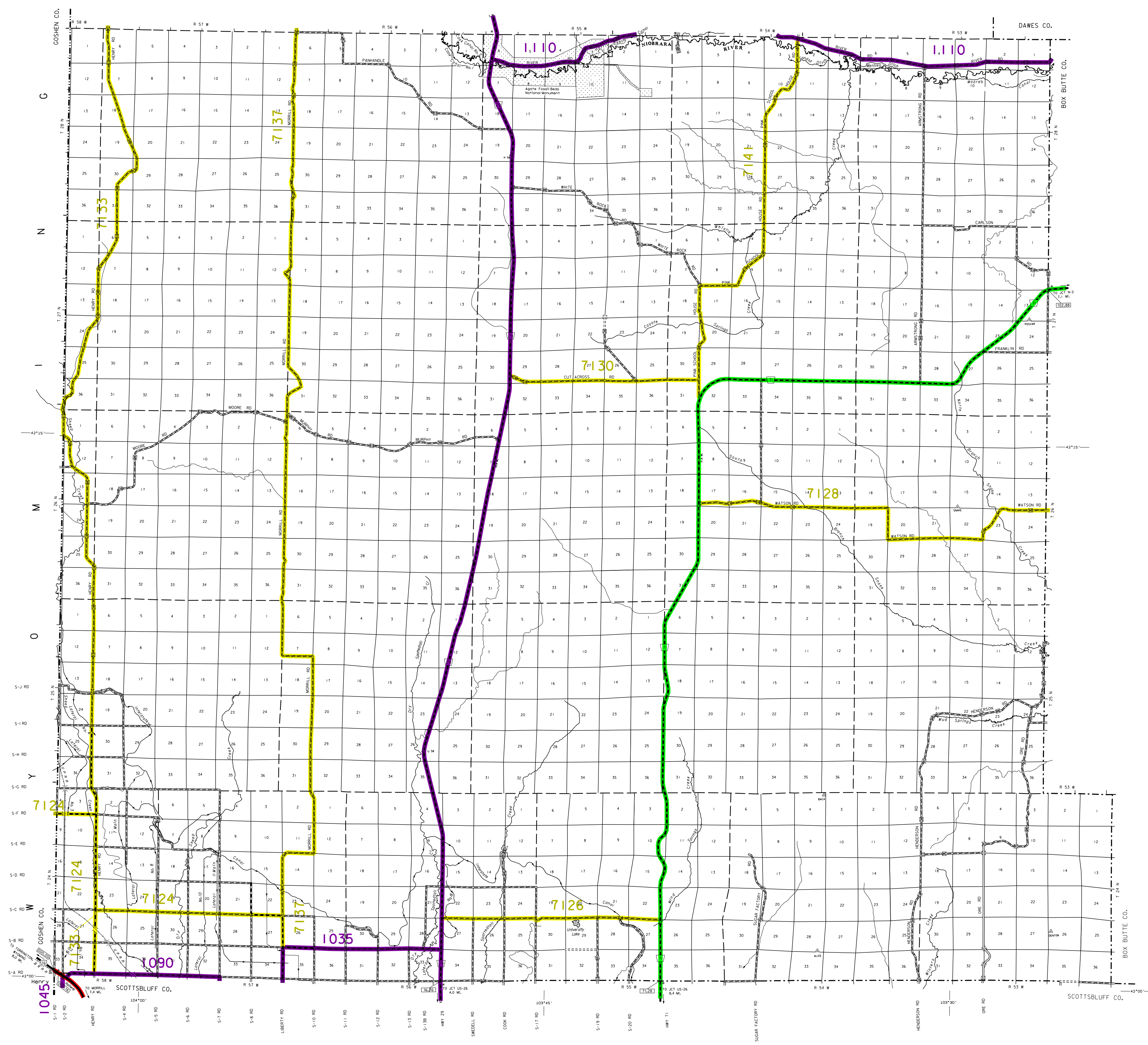


GENERAL HIGHWAY MAP
SIoux COUNTY
 NEBRASKA
 SOUTH HALF

PREPARED BY THE
 DEPARTMENT OF ROADS
 GIS/MAPPING SECTION
 IN COOPERATION WITH THE
 U.S. DEPARTMENT OF TRANSPORTATION
 FEDERAL HIGHWAY ADMINISTRATION
 2011



DATE	REVISION HISTORY
2006	REVISED (LEGEND)
2011	REVISED (LEGEND)



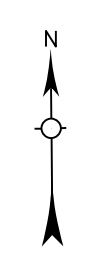
LEGEND

Primitive Road	Filling Station
Unimproved Road	Grain Elevator
Gravel or Grouted Road	Aggregate Pit
Asphalt/Bituminous Surface	Agricultural Experiment Station
Multiple Lane Undivided Highway	Educational Institution
Asphalt/Bituminous Surface	Public Use Area
Concrete/Brick Surface	Recreational Facilities
Multiple Lane Divided Highway	Road Area
Concrete/Brick Surface	Ranger Station
Gravel Highway	Fire Station
Interstate Highway with Full Control of Access	Flare Towers
Side Roads and Streets	Community Hall
911 NAMED Numbered Roads	Correctional Institution
Interstate Numbered Highway	Tourist Court or Motel
US Numbered Highway	Monument/Shell
State Numbered Highway	Museum
State Numbered Highway Spur	Fire Station
State Numbered Highway Link	Courthouse
Highway Reference Post Number	Army
Interstate Exit Number	Post Office
Wide Stream	Highway Maintenance Yard
Narrow Stream	Dump Area
Irrigation Ditch	Sewage Disposal Plant
Reservoir, Pond or Lake	Water Supply Stand Pipe
Reservoir, With Dam	Road or TV Station
Highway Bridge Any Type	Regist. Station or Point of Entry
Low 20' Span	Commercial or Municipal Airport
Small Bridge Closely Spaced	Airport with Paved Runways
Large Bridge Closely Spaced	State Boundary
General Bridge Across Waterway	County Boundary
Arch Bridge	Township Line
Truss Bridge	Section Line
Feederline Underpass	Corporate Limit Lines
Feederline Overpass	Parks and Other Reservations
Railroad Underpass	Boundary Limits of Area Subject to Enlargement (see enlargement for culture)
Railroad Overpass	County Seat
Dam with Road on Top	Other Cities and Villages
Dam with Road on Side	Incorporated City or Village
Cattle Guard	Triangulation Station
Dwelling	Points Between Which Distances Are Measured Indicated
Row of Dwellings	Latitude and Longitude
Cemetery		
Church or Other Religious Institution		
Church with Cemetery adjacent		
Highway		
Business		
Industrial Plant		

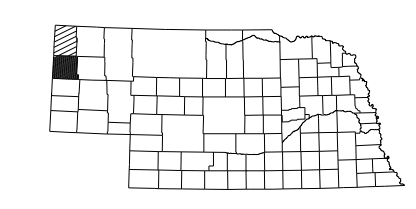
LEGEND
 NATIONAL FUNCTIONAL CLASSIFICATION

INTERSTATE
OTHER FREEWAYS & EXPRESSWAYS
OTHER PRINCIPAL ARTERIALS
MINOR ARTERIAL
MAJOR COLLECTOR
MINOR COLLECTOR
URBANIZED BOUNDARY

All Roads Not Otherwise Indicated Are Classified As Local.
 FHWA Approval: September 25, 2014.



LAMBERT CONFORMAL CONIC PROJECTION
 NAD 83 NORTH AMERICAN DATUM
 NEBRASKA COORDINATE SYSTEM



POPULATION AS OF 2010 CENSUS
 STATE HIGHWAYS CORRECTED TO 2011
 DIGITAL AERIAL PHOTOGRAPHY (DOAD)