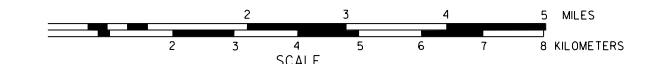


GENERAL HIGHWAY MAP SHERMAN COUNTY NEBRASKA

PREPARED BY THE
DEPARTMENT OF ROADS
GIS/MAPPING SECTION
IN COOPERATION WITH THE
U.S. DEPARTMENT OF TRANSPORTATION
FEDERAL HIGHWAY ADMINISTRATION
2005



REVISION HISTORY			
NAME	DATE	REVISION	
S. FREDRICK	MAY 2004	COUNTY	GIS
B. NELSON	NOV. 2005	COUNTY	GIS
L. COLEMAN	DEC. 2007	911 SYSTEM	

LEGEND

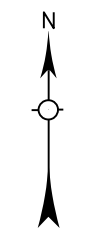
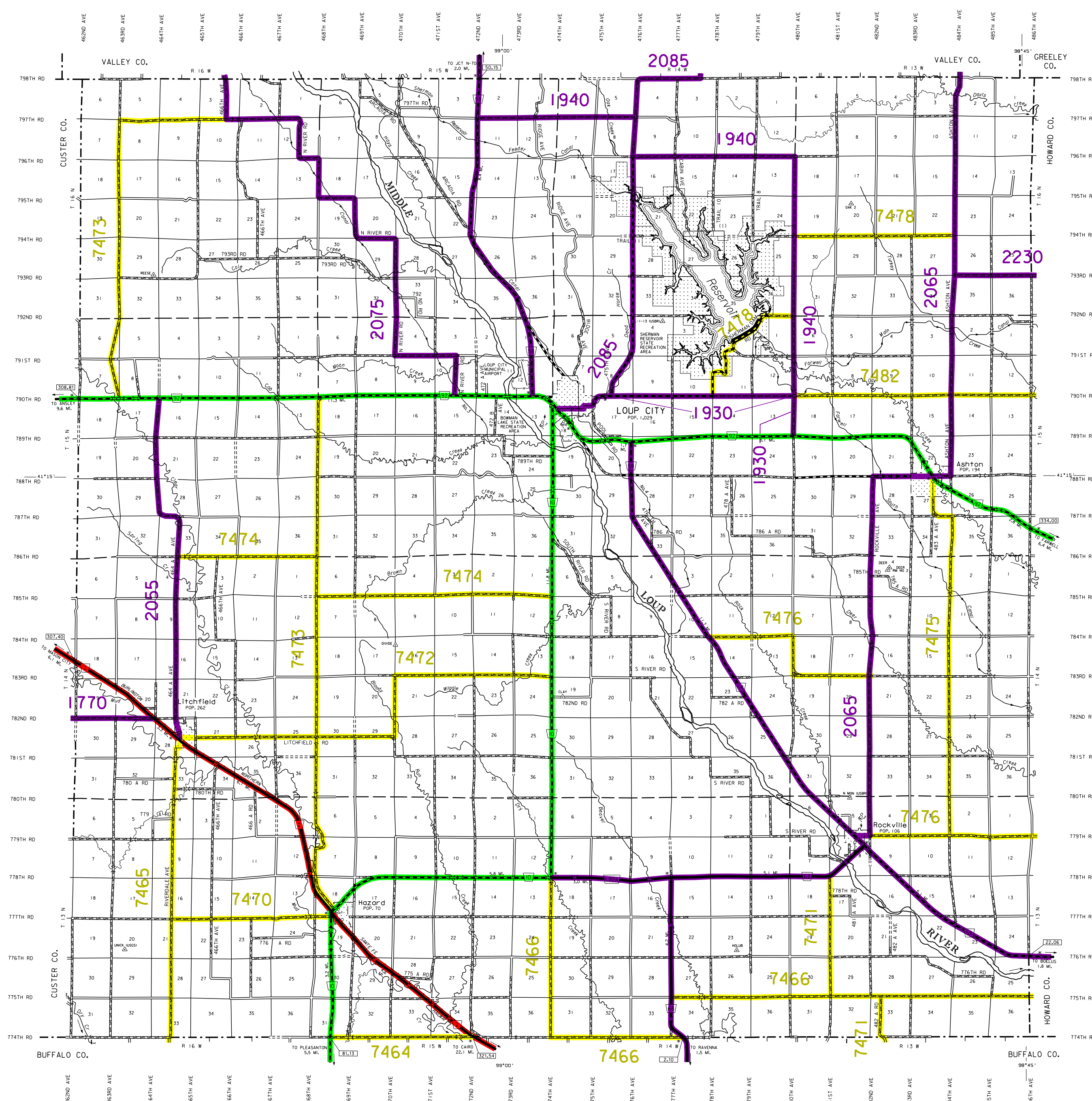
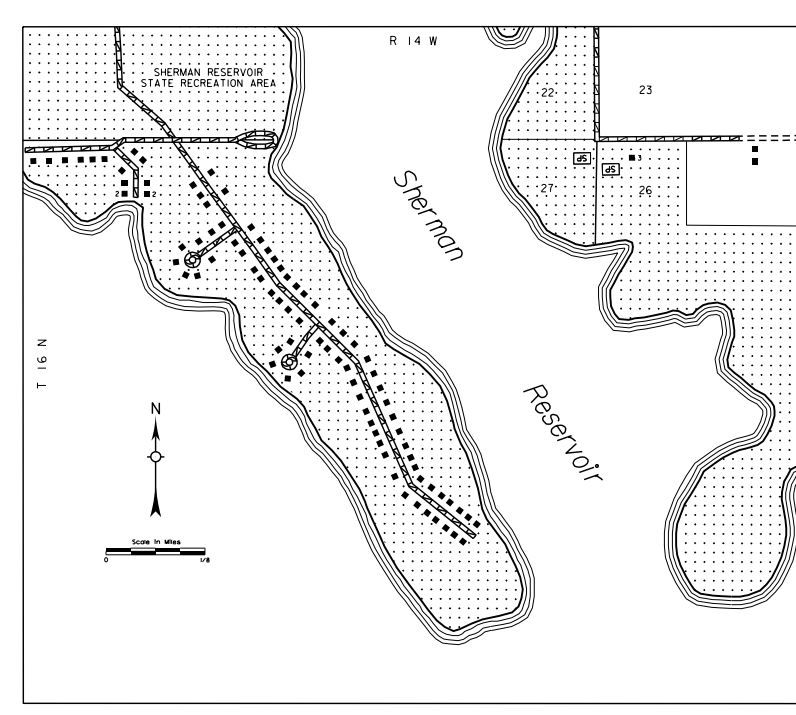
- Private Road
- Unimproved Road
- Gravel or Crushed Rock
- Asphalt/Bituminous Surface
- Multiple Lane, Individual Highway
- Asphalt/Bituminous Surface
- Concrete/Brick Surface
- Multiple Lane, Individual Highway
- Concrete/Brick Surface
- Divided Highway
- Interstate Highway with Full Control of Access
- State Roads and Streets
- 911 NAMED/NUMBERED ROADS
- ADAMS ROAD
- Interstate-Numbered Highway
- US-Numbered Highway
- State-Numbered Highway
- State-Numbered Highway Spur
- State-Numbered Highway Link
- Highway Reference Post Number
- Interstate Exit Number
- Wide Stream
- Narrow Stream
- Irrigation Canal
- Reservoir, Pond or Lake
- Reservoir with Dam
- Highway Bridge-Any Type
- Small Bridge-Closely Spaced
- General Bridge
- Arch Bridge
- Truss Bridge
- Pedestrian Underpass
- Railroad Overpass
- Railroad Underpass
- Railroad
- Dam with Road on Top
- Canal
- Dwelling
- Row of Dwellings
- Church or Other Religious Institution
- Church with Cemetery Adjacent
- Roadside
- Business
- Industrial Plant
- Filling Station
- Grain Elevator
- Aggregate Pit
- Agricultural Experimental Station
- Educational Institution
- Public Use Area
- Recreational Facilities
- Rest Area
- Ranger Station
- Fish Hatchery
- Community Hall
- Correctional Institution
- Tourist Court or Motel
- Monument-Seat
- Monument
- Firestation
- Courthouse
- Armory
- Post Office
- Highway Maintenance Yard
- Bump Area
- Storage (Wooded) Point
- Water Supply Stand Pipe
- Radio or TV Station
- Weight Station or Port of Entry
- Commercial or Multiple Airport
- Airport with Paved Runways
- State Boundary
- County Boundary
- Township Line
- Section Line
- Corporate Limit Lines
- Parks and Other Reservations
- Boundary Limits of Area Shown in Enclosure (See Enclosure for Name)
- State Capital
- County Seat
- Other Cities and Villages
- Incorporated City or Village
- Translocation Station
- Points Between Which Distances Are Measured Indicated Thus
- Latitude and Longitude

LEGEND

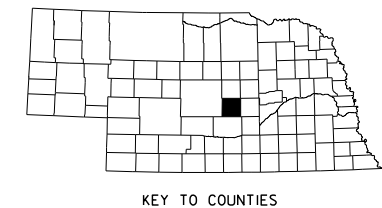
NATIONAL FUNCTIONAL CLASSIFICATION

- INTERSTATE.....
- OTHER FREEWAYS & EXPRESSWAYS.....
- OTHER PRINCIPAL ARTERIALS.....
- MINOR ARTERIAL.....
- MAJOR COLLECTOR.....
- MINOR COLLECTOR.....
- URBANIZED BOUNDARY.....

All Roads Not Otherwise Indicated Are Classified As Local.
FHWA Approval: May 28, 2015.



LAMBERT CONFORMAL CONIC PROJECTION
1983 NORTH AMERICAN DATUM
NEBRASKA COORDINATE SYSTEM



POPULATION AS OF 2010 CENSUS
STATE HIGHWAYS CORRECTED TO 2006
DIGITAL AERIAL PHOTOGRAPHY ©2005

This map is to be used for information only and is not intended to show ownership or to be definitive on land rights and boundaries. Under Nebraska Law, the Nebraska Department of Roads makes no warranties, guarantees or representations for the accuracy of this information and assumes no liability for errors or omissions. Any inaccuracies should be reported to NDOR.