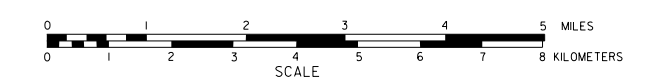


GENERAL HIGHWAY MAP SEWARD COUNTY NEBRASKA

PREPARED BY THE
DEPARTMENT OF ROADS
GIS/MAPPING SECTION
IN COOPERATION WITH THE
U.S. DEPARTMENT OF TRANSPORTATION
FEDERAL HIGHWAY ADMINISTRATION



INVENTORY DATE:
2006

NAME	REVISION	DATE	REVISION
E. VESPERA	2006	06/01/06	COUNTY
L. GOSWAMI	2006	06/01/06	STATE
R. B. ZUP	2006	06/01/06	SEWARD COUNTY

LEGEND

- Primitive Road
- Unimproved Road
- Gravel or Graded Road
- Asphalt/Bituminous Surface
- Concrete/Brick Surface
- Multiple Lane Undivided Highway
- Divided Highway
- Interstate Highway with Full Control of Access
- Side Roads and Streets
- 911 Numbered Roads
- Interstate-Numbered Highway
- US-Numbered Highway
- State-Numbered Highway
- State-Numbered Highway Spur
- State-Numbered Highway Link
- Highway Reference Post Number
- Interstate Exit Number
- Wide Stream
- Narrow Stream
- Irrigation Ditch
- Reservoir, Pond or Lake
- Reservoir With Dam
- Highway Bridge Any Type
- Small Bridges Closely Spaced
- Large Bridges Closely Spaced
- General Bridge
- Arch Bridge
- Truss Bridge
- Pedestrian Underpass
- Railroad Overpass
- Railroad
- Dike with Road on Top
- Cattle Guard
- Dwelling
- Row of Dwellings
- Cemetery
- Church or Other Religious Institution
- Hospital
- Business
- Industrial Plant
- Filling Station
- Grain Elevator
- Aggregate Pit
- Agricultural Experimental Station
- Educational Institutions
- Public Use Area
- Recreational Facilities
- Recreation Area
- Ranger Station
- Fish Hatchery
- Community Hall
- Correctional Institution
- Tourist Court or Motel
- Monument/Shell
- Museum
- Firestation
- Courthouse
- Armory
- Post Office
- Highway Maintenance Yard
- Bump Area
- Sewage Disposal Plant
- Water Supply Stand Pipe
- Pipe Line
- Transmission Line
- Power Plant
- Power Substation
- Radio or TV Station
- Pumping Station
- Weight Station or Part of Entry
- Commercial or Municipal Airport
- Airport with Paved Runways
- State Boundary
- County Boundary
- Township Line
- Section Line
- Corporate Limit Lines
- Parks and Other Reservations
- Boundary Limits of Area Shown in Enclosure
- State Capital
- County Seat
- Other Cities and Villages
- Incorporated City or Village
- Triangulation Station
- Points Between Which Distances Are Measured Indicated Thus
- Latitude and Longitude

LEGEND

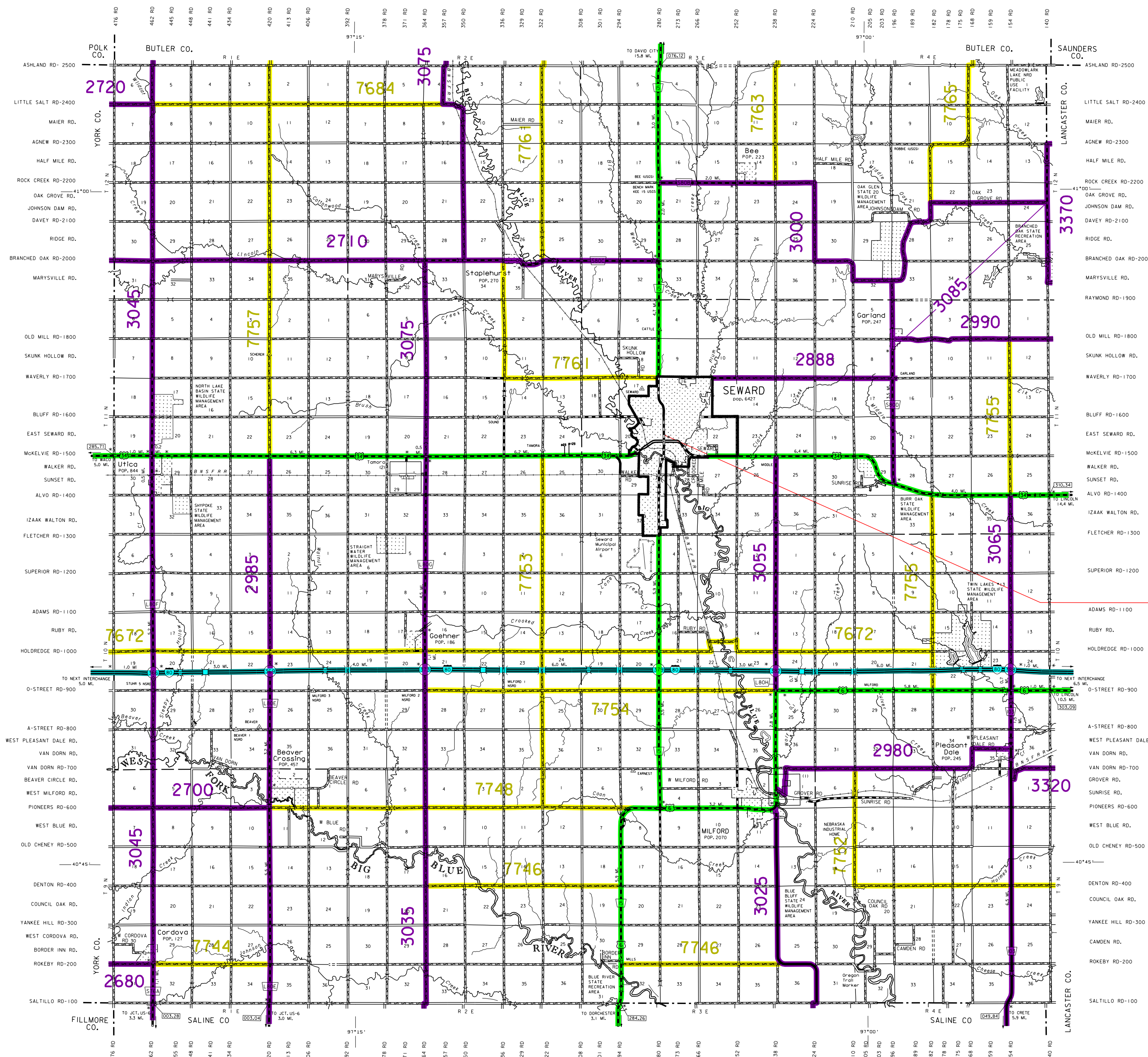
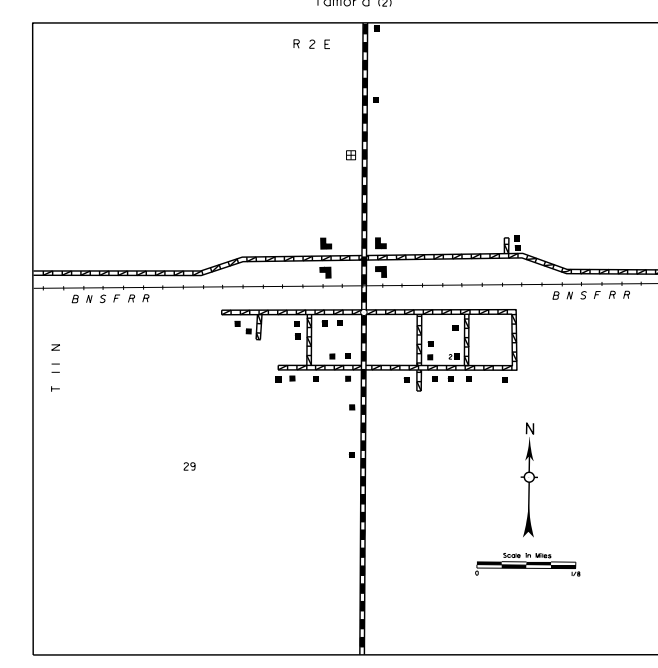
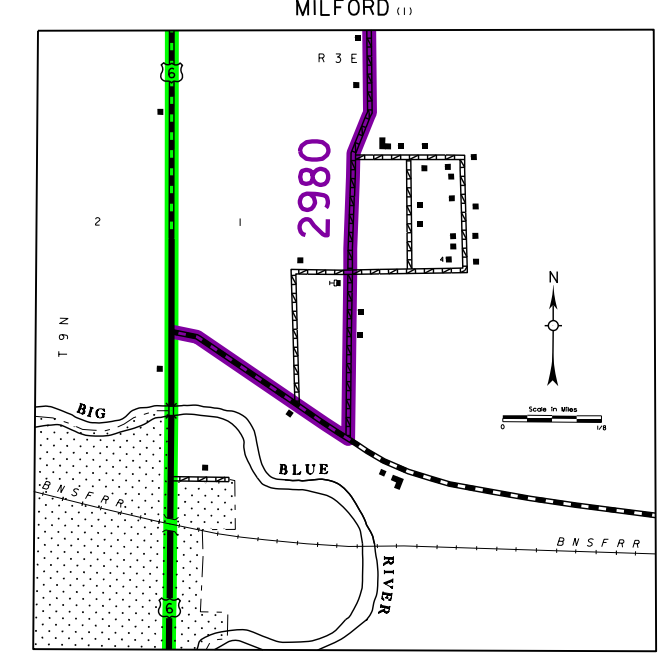
- ### NATIONAL FUNCTIONAL CLASSIFICATION
- INTERSTATE
 - OTHER FREEWAYS & EXPRESSWAYS
 - OTHER PRINCIPAL ARTERIALS
 - MINOR ARTERIAL
 - MAJOR COLLECTOR
 - MINOR COLLECTOR
 - URBANIZED BOUNDARY

All Roads Not Otherwise Indicated Are Classified As Local.
FHWA Approval: November 19, 2015.

LAMBERT CONFORMAL CONIC PROJECTION
1983 NORTH AMERICAN DATUM
NEBRASKA COORDINATE SYSTEM

KEY TO COUNTIES

- INTERCHANGE 366
- INTERCHANGE 369
- INTERCHANGE 373
- INTERCHANGE 379
- INTERCHANGE 382
- INTERCHANGE 388



See Seward Urban Area Map
for Urban System Details

POPULATION AS OF 2000 CENSUS
STATE HIGHWAYS CORRECTED TO 2006
DIGITAL AERIAL PHOTOGRAPHY (DOADO)