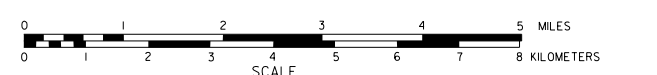


# GENERAL HIGHWAY MAP PERKINS COUNTY NEBRASKA

PREPARED BY THE  
**DEPARTMENT OF ROADS**  
GIS/MAPPING SECTION  
IN COOPERATION WITH THE  
**U.S. DEPARTMENT OF TRANSPORTATION**  
FEDERAL HIGHWAY ADMINISTRATION



INVENTORY DATE:  
**2004**

REVISION HISTORY			
NAME	DATE	REVISION	
E. VEGARA	MARCH 2006	COUNTY	
M. COLLIER	APRIL 2004	INITIAL	
COLLIER	SEP. 2004	INITIAL	

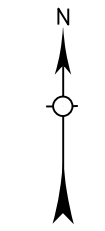
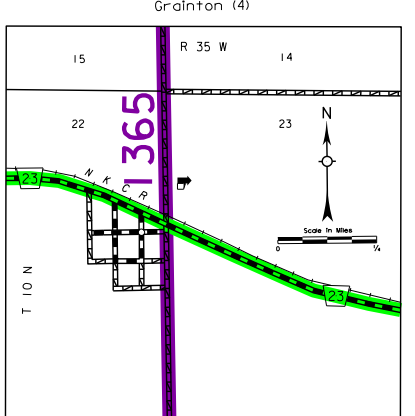
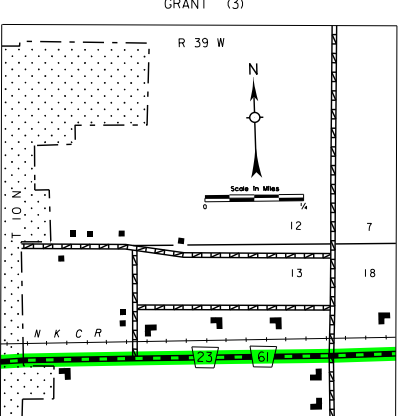
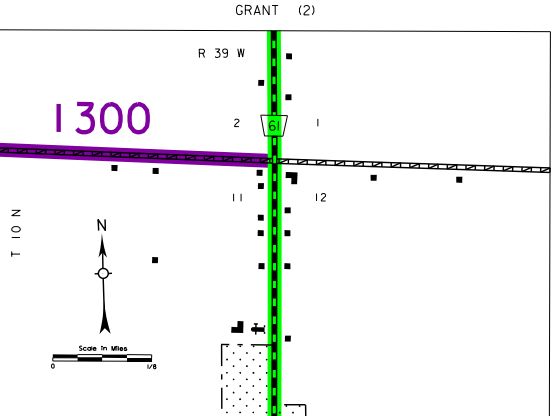
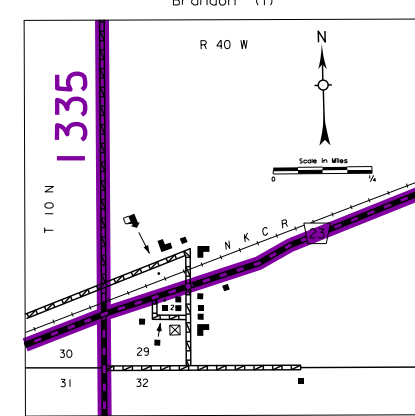
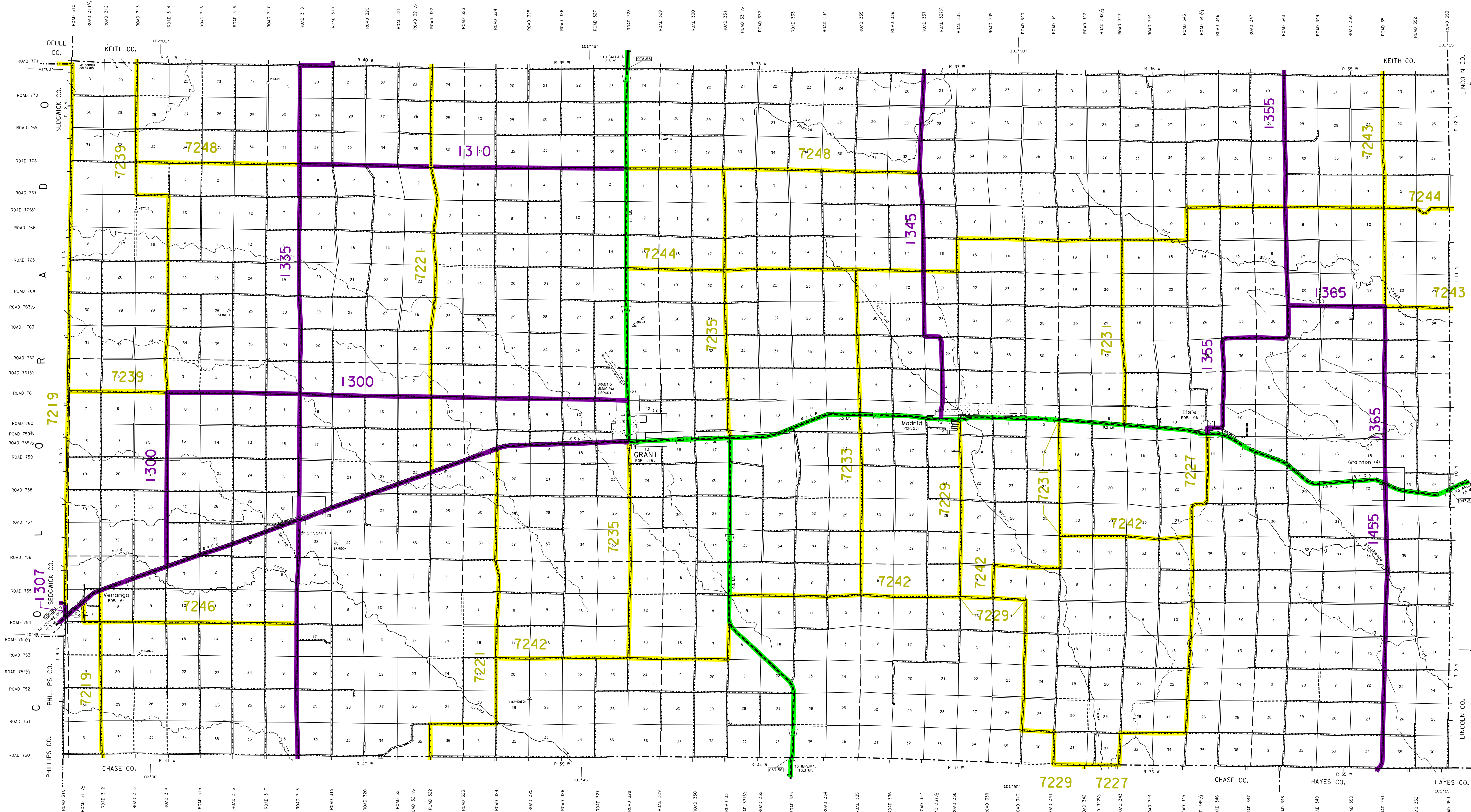
### LEGEND

- |   |  |
|---|--|
| <ul style="list-style-type: none"> <li>Primitive Road</li> <li>Unimproved Road</li> <li>Gravel or Crushed Rock</li> <li>Asphalt/Bituminous Surface</li> <li>Multiple Lane Undivided Highway</li> <li>Asphalt/Bituminous Surface</li> <li>Concrete/Bit. Surface</li> <li>Multiple Lane Undivided Highway</li> <li>Concrete/Bit. Surface</li> <li>Divided Highway</li> <li>Interstate Highway with Full Control of Access</li> <li>Sole Road and Streets</li> <li>State-Numbered Roads</li> <li>Interstate-Numbered Highway</li> <li>State-Numbered Highway Spur</li> <li>State-Numbered Highway Link</li> <li>Highway Reference Point Number</li> <li>Interstate Exit Number</li> <li>Wide Stream</li> <li>Narrow Stream</li> <li>Irrigation Ditch</li> <li>Reservoir, Pond or Lake</li> <li>Reservoir With Dam</li> <li>Highway Bridge Any Type</li> <li>Span Bridges Closely Spaced</li> <li>Span Bridges Closely Spaced</li> <li>General Bridge</li> <li>Arch Bridge</li> <li>Truss Bridge</li> <li>Pedestrian Underpass</li> <li>Railroad Overpass</li> <li>Railroad Underpass</li> <li>Railroad</li> <li>Dam with Road on Top</li> <li>Cattle Guard</li> <li>Dwelling</li> <li>Row of Dwellings</li> <li>Cemetery</li> <li>Church or Other Religious Institution</li> <li>Church with Cemetery Adjacent</li> <li>Hospital</li> <li>Business</li> <li>Industrial Park</li> </ul> | <ul style="list-style-type: none"> <li>Filling Station</li> <li>Grain Elevator</li> <li>Aggregate Pit</li> <li>Agricultural Experimental Station</li> <li>Educational Institutions</li> <li>Public Use and Public Grounds</li> <li>Recreation Facilities</li> <li>Rest Area</li> <li>Ranger Station</li> <li>Fish Hatchery</li> <li>Community Hall</li> <li>Correctional Institution</li> <li>Monument - Small</li> <li>Township Line</li> <li>Fire Station</li> <li>Courthouse</li> <li>Armory</li> <li>Highway Maintenance Yard</li> <li>Dump Area</li> <li>Sewage Disposal Plant</li> <li>Water Supply Stand Pipe</li> <li>Radiol or TV Station</li> <li>Weight Station or Port of Entry</li> <li>Commercial or Municipal Airport</li> <li>Airport with Road Runways</li> <li>State Boundary</li> <li>County Boundary</li> <li>Township Line</li> <li>Section Line</li> <li>Corporate Limit Lines</li> <li>Parks and Other Reservations</li> <li>Boundary Limits of Area Shown in Other Reports</li> <li>State Capital</li> <li>County Seat</li> <li>Other Cities and Villages</li> <li>Incorporated City or Village</li> <li>Transportation Station</li> <li>Points Between which Distances are Measured Indicated Thus</li> <li>Latitude and Longitude</li> </ul> |
|---|--|

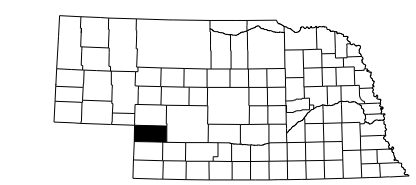
### LEGEND NATIONAL FUNCTIONAL CLASSIFICATION

- INTERSTATE
- OTHER FREEWAYS & EXPRESSWAYS
- OTHER PRINCIPAL ARTERIALS
- MINOR ARTERIAL
- MAJOR COLLECTOR
- MINOR COLLECTOR
- URBANIZED BOUNDARY

All Roads Not Otherwise Indicated Are Classified As Local.  
FHWA Approval: May 28, 2015.



LAMBERT CONFORMAL CONIC PROJECTION  
1883 NORTH AMERICAN DATUM  
NEBRASKA COORDINATE SYSTEM



This map is to be used for information only and is not intended to show ownership or to be definitive on which roads are public under Nebraska Law. The Nebraska Department of Roads makes no warranties, guarantees or representations for the accuracy of this information and assumes no liability for errors or omissions, or inconsistencies, should be reported to NDOR.