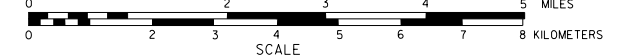


GENERAL HIGHWAY MAP
MORRILL COUNTY
 NORTH HALF
 NEBRASKA

PREPARED BY THE
 DEPARTMENT OF ROADS
 GIS/MAPPING SECTION
 IN COOPERATION WITH THE
 U.S. DEPARTMENT OF TRANSPORTATION
 FEDERAL HIGHWAY ADMINISTRATION
 2015



NAME	DATE	REVISION
L. Colquhoun	August 2006	911 System
L. Colquhoun	December 2008	Yield Signs
L. Colquhoun	July 2012	County
L. Colquhoun	January 2014	County Split from Neighbor

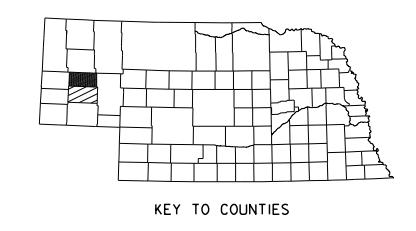
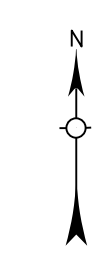
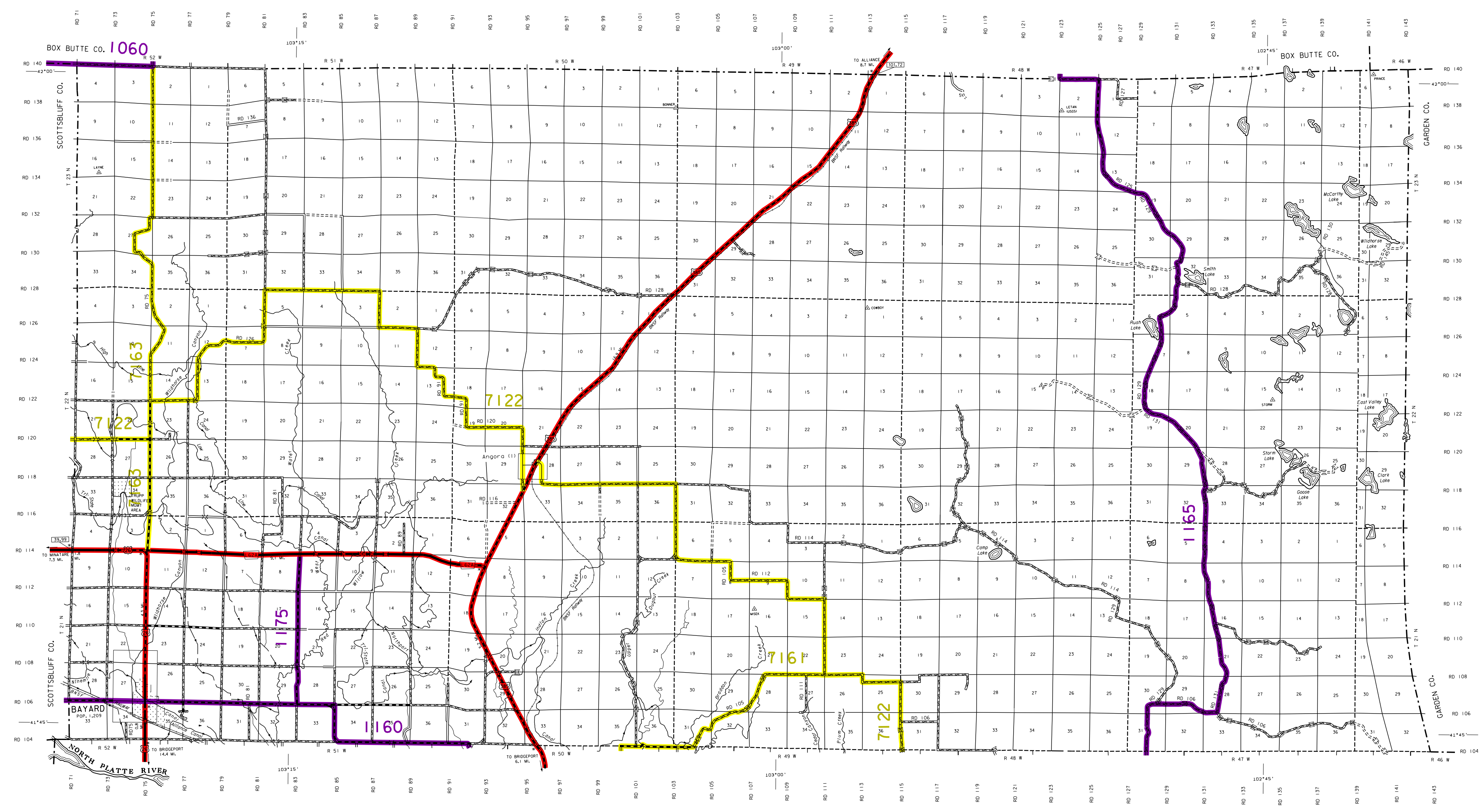
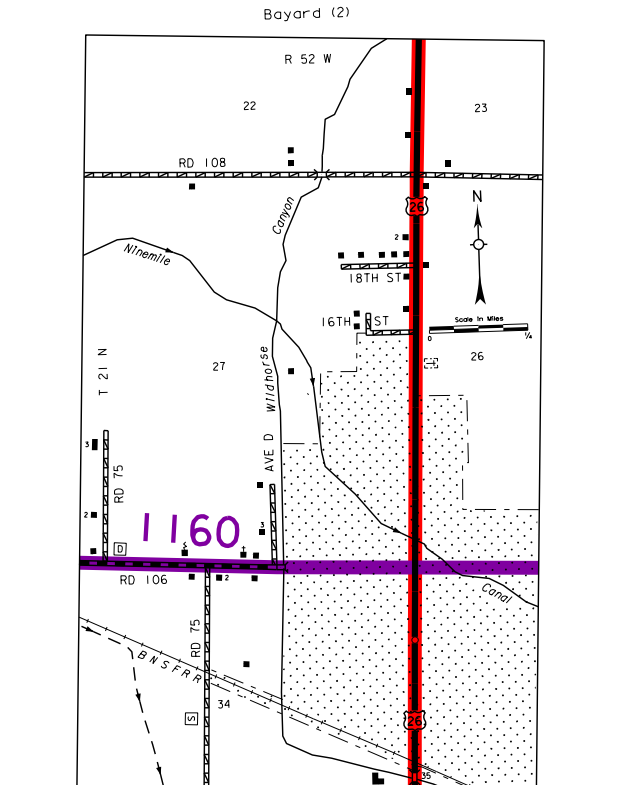
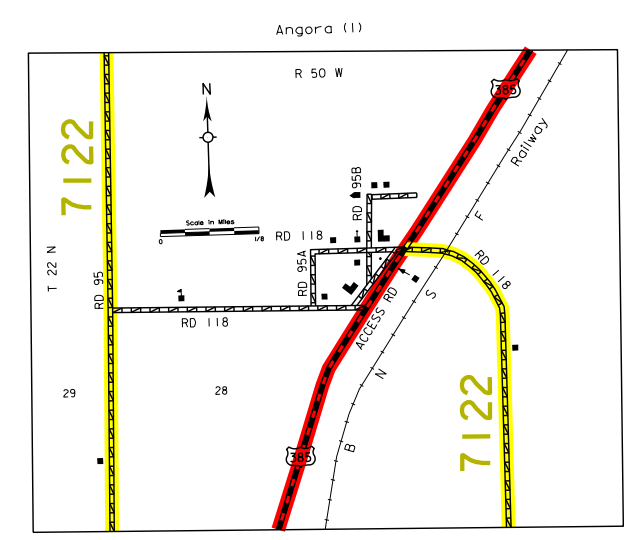
LEGEND

- Primitive Road
- Unimproved Road
- Gravel or Crushed Rock
- Asphalt Bituminous Surface
- Multiple Lane Undivided Highway
- Asphalt Bituminous Surface
- Concrete/Brick Surface
- Multiple Lane Undivided Highway
- Concrete/Brick Surface
- Divided Highway
- Interstate Highway with Full Control of Access
- State Roads and Streets
- 911 NAME/Numbered Roads
- Interstate Numbered Highway
- US Numbered Highway
- State Numbered Highway
- State Numbered Highway Spur
- State Numbered Highway Loop
- Highway Reference Post Number
- Interstate Exit Number
- Wide Stream
- Narrow Stream
- Irrigation Canal
- Reservoir, Pond or Lake
- Reservoir with Dam
- Highway Bridge-Any Type over 50 feet
- Small Bridge-County Spaced
- General Bridge
- Arch Bridge
- Trauss Bridge
- Pedestrian Underpass
- Railroad Overpass
- Railroad Underpass
- Railroad
- Dam with Road on Top
- Canals
- Row of Dwellings
- Cemetery
- Church or Other Religious Institution
- Church with Cemetery Adjacent
- Highway
- Business
- Industrial Plant
- Filling Station
- Grain Elevator
- Aggregate Pit
- Agricultural Experimental Station
- Educational Institutions
- Public Use Area
- Recreational Facilities
- Rest Area
- Ranger Station
- Fish Hatchery
- Community Hall
- Correctional Institution
- Tourist Court or Motel
- Monument-Seat
- Market
- Firestation
- Courthouse
- Post Office
- Highway Maintenance Yard
- Bump Area
- Seepage Disposal Point
- Water Supply Stand Pipe
- Radio or TV Station
- Weight Station or Port of Entry
- Commercial or Municipal Airport
- Airport with Paved Runways
- State Boundary
- County Boundary
- Township Line
- Section Line
- Corporate Limit Lines
- Parks and Other Reservations
- Boundary Limits of Area Shown in Enclosure
- State Capital
- County Seat
- Other Cities and Villages
- Incorporated City or Village
- Triangulation Station
- Points Between Which Distances Are Measured Indicated Thus
- Latitude and Longitude

LEGEND

- NATIONAL FUNCTIONAL CLASSIFICATION**
- INTERSTATE
 - OTHER FREEWAYS & EXPRESSWAYS
 - OTHER PRINCIPAL ARTERIALS
 - MINOR ARTERIAL
 - MAJOR COLLECTOR
 - MINOR COLLECTOR
 - URBANIZED BOUNDARY

All Roads Not Otherwise Indicated Are Classified As Local.
 FHWA Approval: May 28, 2015.



POPULATION AS OF 2010 CENSUS
 STATE HIGHWAYS CORRECTED TO 2015
 DIGITAL AERIAL PHOTOGRAPHY (DSMP) TAKEN 2012