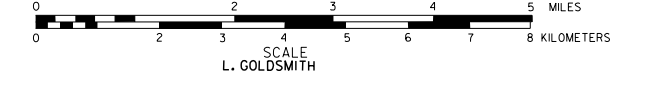


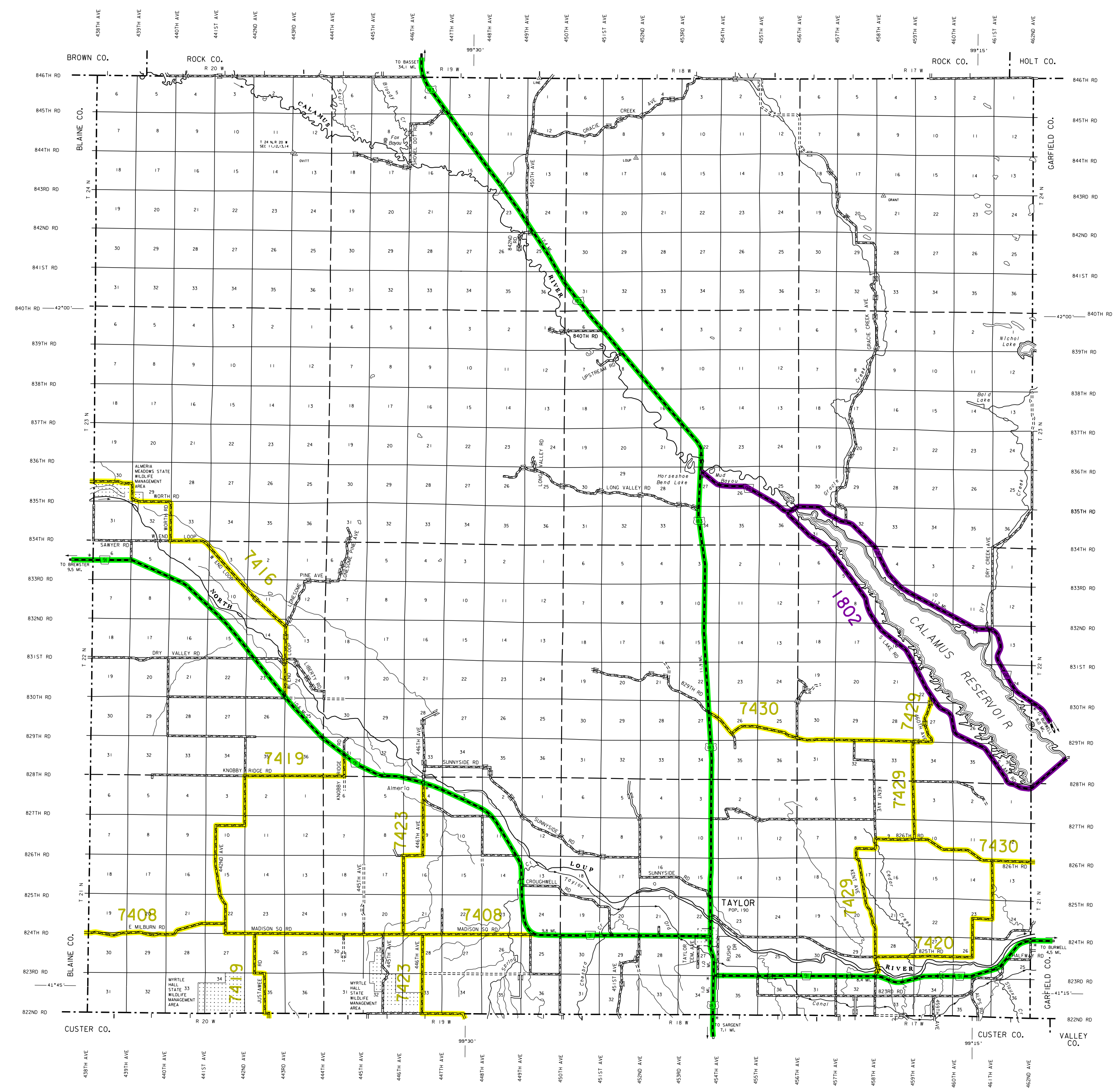
GENERAL HIGHWAY MAP LOUP COUNTY NEBRASKA

PREPARED BY THE
DEPARTMENT OF ROADS
GIS/MAPPING SECTION
IN COOPERATION WITH THE
U.S. DEPARTMENT OF TRANSPORTATION
FEDERAL HIGHWAY ADMINISTRATION

1998



REVISION HISTORY		
NAME	DATE	REVISION
L. GOLDSMITH	JAN. 2007	911 SYSTEM
L. GOLDSMITH	SEPT. 2013	911 SYSTEM



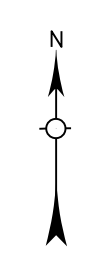
LEGEND

- Primitive Road
- Unimproved Road
- Gravel or Crushed Rock
- Asphalt/Bituminous Surface
- Multiple Lane Undivided Highway
- Concrete/Bituminous Surface
- Multiple Lane Undivided Highway
- Concrete/Bituminous Surface
- Divided Highway with Full Control of Access
- Interstate Highway with Full Control of Access
- Side Roads and Streets
- State-Numbered Highway
- State-Numbered Highway Spur
- State-Numbered Highway Link
- Interstate Exit Number
- Wide Stratum
- Narrow Stratum
- Irrigation Ditch
- Reservoir, Pond or Lake
- Highway Bridge-Any Type
- Small Bridge-Closely Spaced
- Waterflooded Area
- General Bridge
- Arch Bridge
- Truss Bridge
- Feeder Underpass
- Pedestrian Overpass
- Railroad Overpass
- Railroad Underpass
- Other Cities and Villages
- Box of Dwellings
- Cemetery
- Church or Other Religious Institution
- Church with Cemetery Adjacent
- Business
- Industrial Plant
- Filling Station
- Grain Elevator
- Aggregate Pit
- Agricultural Experimental Station
- Educational Institutions
- Public Use Area
- Recreational Facilities
- State Health Agency Station
- Rest Area
- Ranger Station
- Fire Station
- Community Hall
- Correctional Institution
- Tourist Court or Motel
- Monument-Small
- Museum
- Fire Station
- Courthouse
- Armory
- Post Office
- Highway Maintenance Yard
- Dump Area
- Sewage Disposal Plant
- Water Supply Stone Pipe
- Radio or TV Station
- Weight Station or Port of Entry
- Commercial or Municipal Airport
- Airport with Paved Runways
- State Boundary
- County Boundary
- Section Line
- Corporate Limit Lines
- Parks and Other Reservations
- Boundary Limits of Area Shown in Engineering's License or Certificate
- State Capital
- County Seat
- Other Cities and Villages
- Incorporated City or Village
- Triangulation Station
- Points Between Which Distances Are Measured Indicated Thus
- Latitude and Longitude

LEGEND

- NATIONAL FUNCTIONAL CLASSIFICATION**
- INTERSTATE
 - OTHER FREEWAYS & EXPRESSWAYS
 - OTHER PRINCIPAL ARTERIALS
 - MINOR ARTERIAL
 - MAJOR COLLECTOR
 - MINOR COLLECTOR
 - URBANIZED BOUNDARY

All Roads Not Otherwise Indicated Are Classified As Local.
FHWA Approval: September 25, 2014.



This map is to be used for information only and is not intended to show benefits of or be definitive on which roads are public. Under Nebraska Law, the Nebraska Department of Roads makes no warranties, guarantees or representations for the accuracy of this information and assumes no liability for errors or omissions. Any inaccuracies should be reported to NDOR.

POPULATION AS OF 2010 CENSUS
STATE HIGHWAYS CORRECTED TO 1998
AERIAL PHOTOGRAPHY TAKEN IN 1966

LAMBERT CONFORMAL CONIC PROJECTION
1983 NORTH AMERICAN DATUM
NEBRASKA COORDINATE SYSTEM

