

GENERAL HIGHWAY MAP HOWARD COUNTY NEBRASKA

PREPARED BY THE
DEPARTMENT OF ROADS
GIS/MAPPING SECTION

IN COOPERATION WITH THE
U.S. DEPARTMENT OF TRANSPORTATION
FEDERAL HIGHWAY ADMINISTRATION
2014

SCALE
0 1 2 3 4 5 6 7 8 9 10
MILES

REVISION HISTORY	
DATE	REVISION
NOV 2013	ELBA - CORPORATE LIMIT

LEGEND

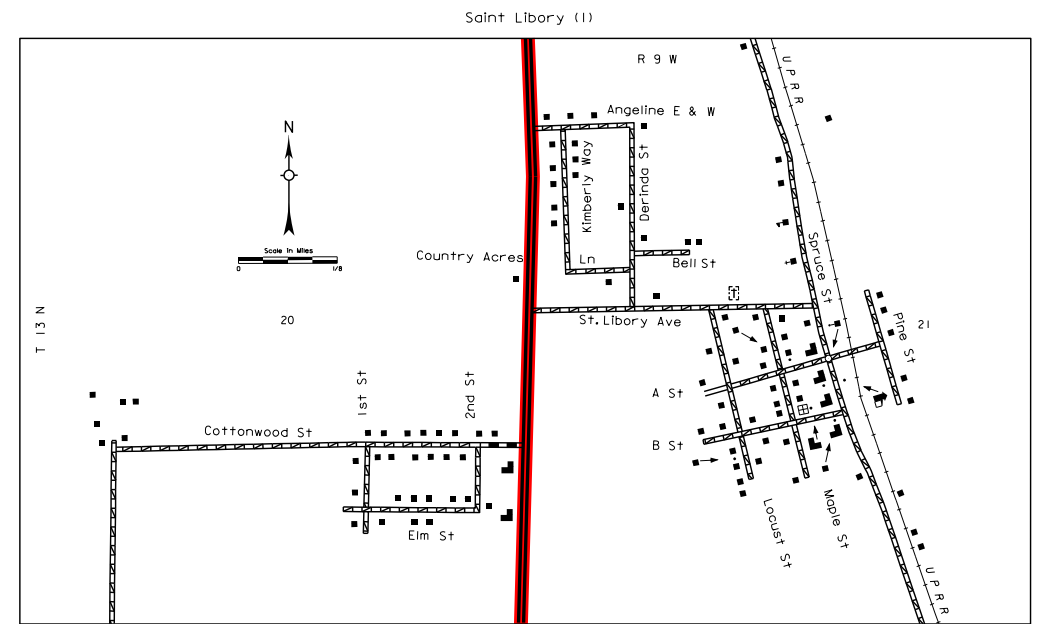
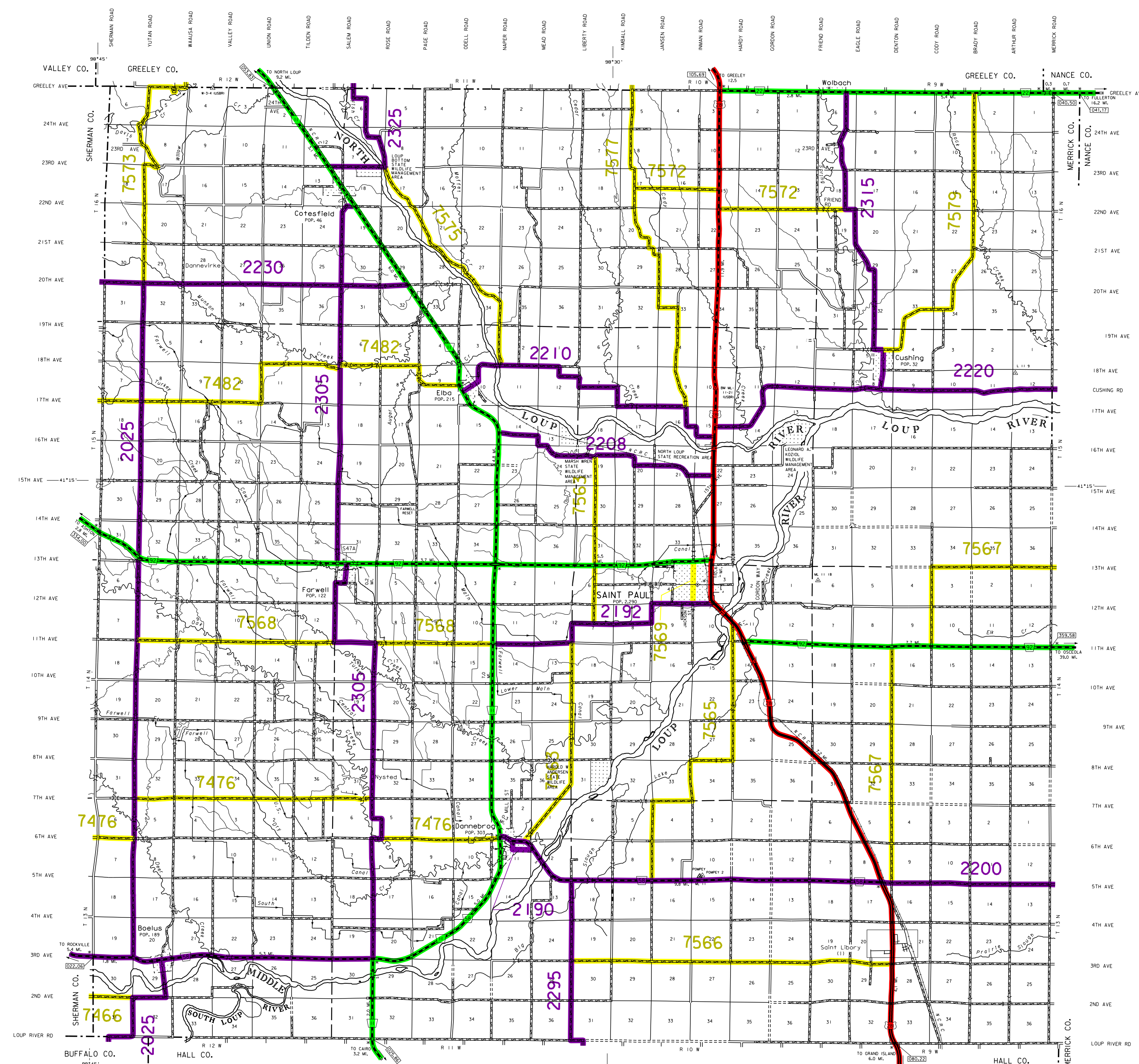
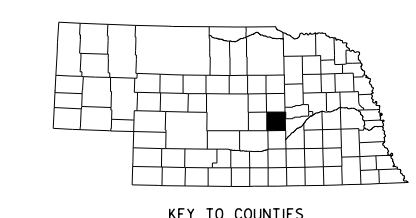
- | | |
|--|---|
| Primitive Road | Filling Station |
| Unimproved Road | Grain Elevator |
| Gravel or Crushed Road | Aggregate Pile |
| Asphalt/Bituminous Surface | Agricultural Experiment Station |
| Multiple Lane Undivided Highway | Educational Institutions |
| Asphalt/Bituminous Surface | Public Use Area |
| Concrete/Brick Surface | Recreational Facilities |
| Multiple Lane Undivided Highway | Rest Area |
| Concrete/Brick Surface | Ranger Station |
| Divided Highway | Fish Hatchery |
| Interstate Highway with Full Control of Access | Community Hall |
| State Roads and Streets | Correctional Institution |
| State-Numbered Roads | Juvenile Court or Jail |
| Interstate-Numbered Highway | Monument-Shell |
| US-Numbered Highway | Museum |
| State-Numbered Highway | Fire Station |
| State-Numbered Highway Spur | Courthouse |
| State-Numbered Highway Link | Armsory |
| Highway Reference Post Number | Post Office |
| Interstate Exit Number | Road or Toll Station |
| Wide Stream | Highway Maintenance Yard |
| Narrow Stream | Dump Area |
| Irrigation Ditch | Sewage Disposal Plant |
| Reservoir, Pond or Lake | Water Supply Stand Pipe |
| Reservoir with Dam | Station with Flood Runways |
| Highway Bridge-Any Type | Commercial or Municipal Airport |
| Lower Spillway | State Boundary |
| Small Bridge-Closely Spaced | Township Line |
| Timbered Bridge-Closely Spaced | Section Line |
| Timbered Bridge-Open Spaced | Corporate Limit Lines |
| General Bridge | Parks and Other Reservations |
| Arch Bridge | Boundary Limits of Area Shown in Enlargements |
| Truss Bridge | State Capitol |
| Pedestrian Overpass | County Seat |
| Pedestrian Overpass | Other Cities and Villages |
| Railroad Overpass | Incorporated City or Village |
| Railroad Underpass | Triangulation Station |
| Road with Road on Top | Points Between Which Distances Are Measured |
| Cattle Guard | Hospital |
| Dwelling | Business |
| Row of Dwellings | Industrial Plant |
| Church with Cemetery Adjacent | |
| | Latitude and Longitude |

LEGEND NATIONAL FUNCTIONAL CLASSIFICATION

- INTERSTATE
- OTHER FREEWAYS & EXPRESSWAYS
- OTHER PRINCIPAL ARTERIALS
- MINOR ARTERIAL
- MAJOR COLLECTOR
- MINOR COLLECTOR
- URBANIZED BOUNDARY

All Roads Not Otherwise Indicated Are Classified As Local.
FHWA Approval: September 25, 2014.

LAMBERT CONFORMAL CONIC PROJECTION
1983 NORTH AMERICAN DATUM
NEBRASKA COORDINATE SYSTEM



This map is to be used for information only and is not intended to show ownership or to be definitive on which roads are public under Nebraska Law. The Nebraska Department of Roads makes no warranties, guarantees or representations for the accuracy of this information and assumes no liability for errors or omissions. Any discrepancies should be reported to NDOR.

POPULATION AS OF 2010 CENSUS
STATE HIGHWAYS CORRECTED TO 2014
DIGITAL AERIAL PHOTOGRAPHY (DOADO) TAKEN IN 2012