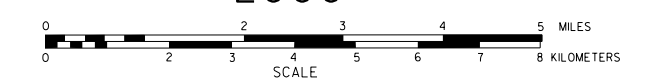


# GENERAL HIGHWAY MAP HOOKER COUNTY NEBRASKA

PREPARED BY THE  
DEPARTMENT OF ROADS  
GIS/MAPPING SECTION  
IN COOPERATION WITH THE  
U.S. DEPARTMENT OF TRANSPORTATION  
FEDERAL HIGHWAY ADMINISTRATION  
2000



DATE	REVISION HISTORY	REVISION
MAY 2000	911 SYSTEM	
JUN 2001	911 SYSTEM	

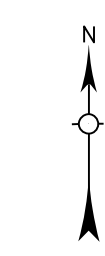
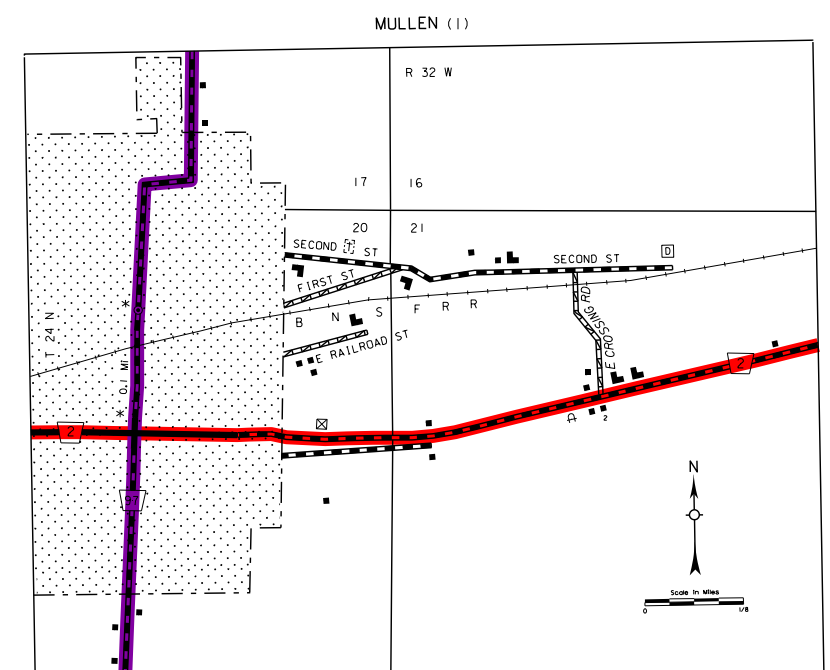
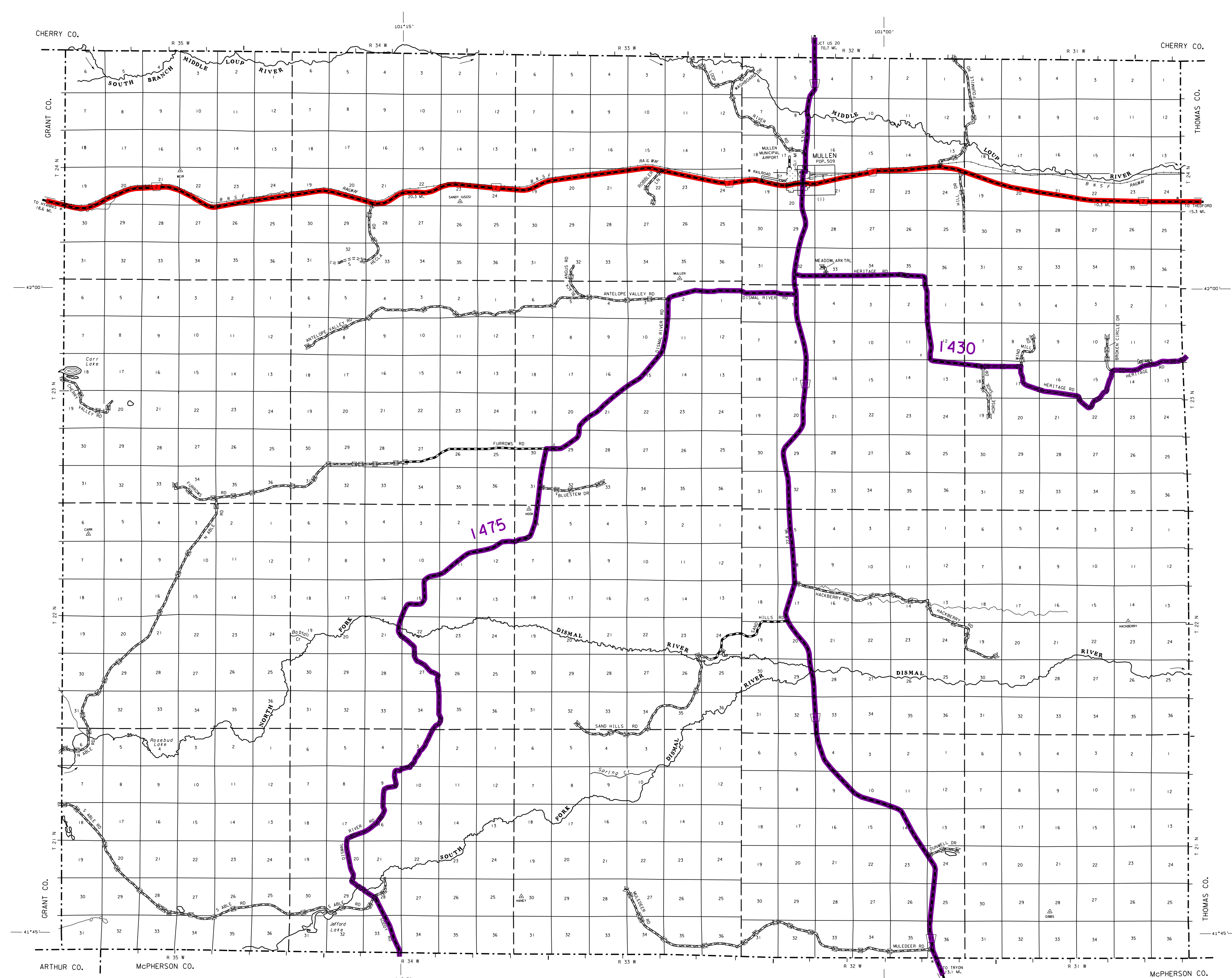
### LEGEND

- Primitive Road
- Unimproved Road
- Gravel or Grouted Road
- Asphalt/Bituminous Surface
- Mulch/Low Undrilled Highway
- Asphalt/Bituminous Surface
- Concrete/Brick Surface
- Mulch/Low Undrilled Highway
- Concrete/Brick Surface
- Divided Highway
- Interstate Highway with Full Control Access
- Side Roads and Streets
- 911 NAMED/Numbered Roads
- Interstate/Numbered Highway
- US-Numbered Highway
- State-Numbered Highway
- State-Numbered Highway Spur
- State-Numbered Highway Lpk.
- Highway Reference Post Number
- Interstate Exit Number
- Wide Street
- Narrow Street
- Irrigation Ditch
- Reservoir/Pond or Lake
- Reservoir/With Dam
- Highway Bridge-Any Type
- Level 25 Span
- Small Bridges-Closely Spaced
- Large Spans
- Concrete Bridge
- Arch Bridge
- Truss Bridge
- Pedestrian Underpass
- Roadside Overpass
- Railroad Overpass
- Railroad Underpass
- Due with Road on Top
- Cattle Guard
- Dwelling
- Row of Dwellings
- Cemetery
- Church or Other Religious Institution
- Church with Cemetery Adjacent
- Hospital
- Business
- Industrial Plant
- Filling Station
- Grain Elevator
- Aggregate Pile
- Agricultural Experiment Station
- Educational Institutions
- Public Use Area
- Viewing Platform
- Recreational Facilities
- Rest Area
- Range Station
- Fish Hatchery
- Community Hall
- Correctional Institution
- Tourist Court or Motel
- Monument-Small
- Museum
- Fire Station
- Courthouse
- Armory
- Post Office
- Highway Administration Home
- Dump Area
- Sewage Disposal Plant
- Water Supply Stand Pipe
- Roads or TV Station
- Relief Station or Part of Entry
- Commercial or Municipal Airport
- Airport with Paved Runways
- State Boundary
- County Boundary
- Township Line
- Section Line
- Corporate Unit Lines
- Parks and Other Reservations
- Boundary Lines of Area Shown in Enlargements (see enlargements for details)
- State Capitol
- County Seat
- Other Cities and Villages
- Incorporated City or Village
- Triangulation Station
- Points Between which Distances are Measured Indicated There
- Latitude and Longitude

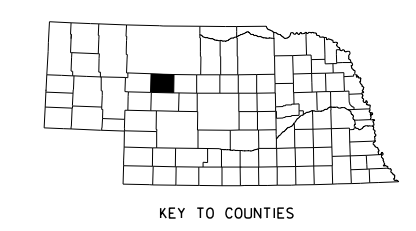
### LEGEND

- #### NATIONAL FUNCTIONAL CLASSIFICATION
- INTERSTATE
  - OTHER FREEWAYS & EXPRESSWAYS
  - OTHER PRINCIPAL ARTERIALS
  - MINOR ARTERIAL
  - MAJOR COLLECTOR
  - MINOR COLLECTOR
  - URBANIZED BOUNDARY

All Roads Not Otherwise Indicated Are Classified As Local.  
FHWA Approval: September 25, 2014.



LAMBERT CONFORMAL CONIC PROJECTION  
1983 NORTH AMERICAN DATUM  
NEBRASKA COORDINATE SYSTEM



POPULATION AS OF 2010 CENSUS  
STATE HIGHWAYS CORRECTED TO 2000

This map is to be used for information only and is not intended to show ownership or to be definitive on which roads are public under Nebraska law. The Nebraska Department of Roads makes no warranties, guarantees or representations for the accuracy of this information and assumes no liability for errors or omissions. Any inconsistencies should be reported to NDOR.