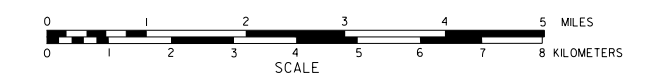


GENERAL HIGHWAY MAP GARFIELD COUNTY NEBRASKA

PREPARED BY THE
DEPARTMENT OF ROADS
GIS/MAPPING SECTION
IN COOPERATION WITH THE
U.S. DEPARTMENT OF TRANSPORTATION
FEDERAL HIGHWAY ADMINISTRATION



INVENTORY DATE:
2003

NAME	DATE	COUNTY	REVISION
G. WILLIAMS	FEB. 2003	GARFIELD	
STEVEN J. JELLY	NOV. 2003	CO. HWY SUPERINTENDENT	SR
D. COUGHLIN	FEB. 2007	SR	SYSTEM
DAVID WILLIAMS	APRIL 2009		Align Roads to NHD South
M. COLE	SEP. 2010		SR
	DEC. 2014		Surf Chg. ATJ Burwell

LEGEND

<p>Primitive Road</p> <p>Undergrd. Road</p> <p>Gravel or Crushed Rock</p> <p>Asphalt Bituminous Surface</p> <p>Multiple Lane Unpaved Highway</p> <p>Asphalt Bituminous Surface</p> <p>Concrete/Ask Surface</p> <p>Multiple Lane Unpaved Highway</p> <p>Concrete/Ask Surface</p> <p>Divided Highway</p> <p>Interstate Highway with Full Control of Access</p> <p>Side Roads and Streets</p> <p>911 NAMED/Numbered Roads</p> <p>Interstate-Numbered Highway</p> <p>US-Numbered Highway</p> <p>State-Numbered Highway</p> <p>State-Numbered Highway Spur</p> <p>State-Numbered Highway Link</p> <p>Highway Reference Post Number</p> <p>Interstate Exit Number</p> <p>Wide Stream</p> <p>Narrow Stream</p> <p>Bridgion Stram</p> <p>Reservoir, Pond or Lake</p> <p>Reservoir With Dam</p> <p>Highway Bridge-Any Type over 20 feet</p> <p>Small Bridge-Clasificatlon Based on Materials Used and Span Length</p> <p>General Bridge</p> <p>Arch Bridge</p> <p>Truss Bridge</p> <p>Pedestrian Underpass</p> <p>Railroad Overpass</p> <p>Railroad Underpass</p> <p>Chimney</p> <p>Coal Mine</p> <p>Well</p> <p>Water Tower</p> <p>Wellhead</p> <p>Business</p> <p>Industrial Plant</p>	<p>Filing Station</p> <p>Green Elevator</p> <p>Aggregate Pit</p> <p>Agricultural Experiment Station</p> <p>Educational Institutions</p> <p>Public Use Area</p> <p>Recreational Facilities</p> <p>Rest Area</p> <p>Ranger Station</p> <p>Flan Hatchery</p> <p>Community Hall</p> <p>Correctional Institution</p> <p>Tourist Court or Motel</p> <p>Monument-Small</p> <p>Manure</p> <p>Firestation</p> <p>Courthouse</p> <p>Armory</p> <p>Post Office</p> <p>Highway Maintenance Yard</p> <p>Dump Area</p> <p>Sewage Disposal Plant</p> <p>Water Supply Stand Pipe</p> <p>Road or TV Station</p> <p>Weight Station or Port of Entry</p> <p>Commercial Municipal Airport</p> <p>Airport with Paved Runways</p> <p>State Boundary</p> <p>County Boundary</p> <p>Township Line</p> <p>Section Line</p> <p>Corporate Limit Lines</p> <p>Parks and Other Reservations</p> <p>Boundary Limits of Area Shown in Other Maps - See Mapmakers for Labels</p> <p>State Capital</p> <p>County Seat</p> <p>Other Cities and Villages</p> <p>Incorporated City or Village</p> <p>Triniquation Station</p> <p>Points Between Which Distances Are Measured Indicated Thus</p> <p>Latitude and Longitude</p>
---	---

LEGEND
NATIONAL FUNCTIONAL CLASSIFICATION

INTERSTATE.....

OTHER FREEWAYS & EXPRESSWAYS.....

OTHER PRINCIPAL ARTERIALS.....

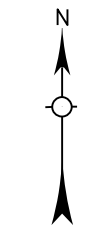
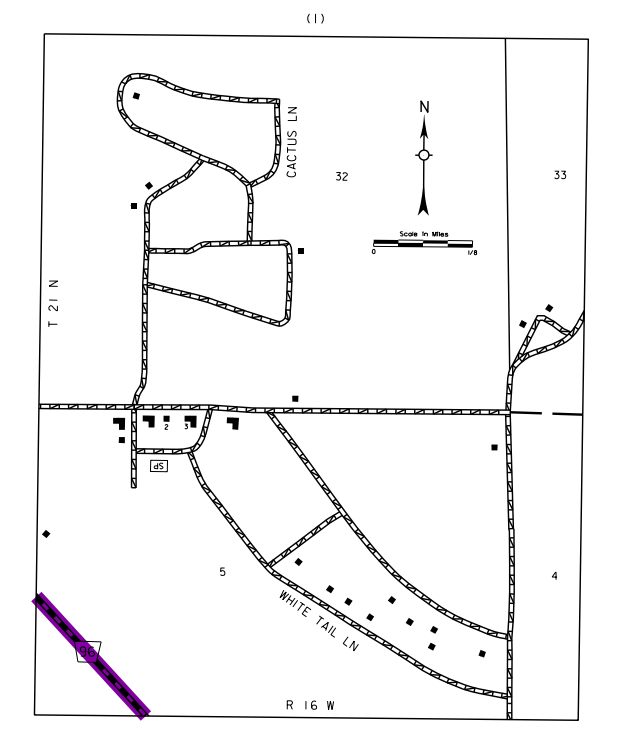
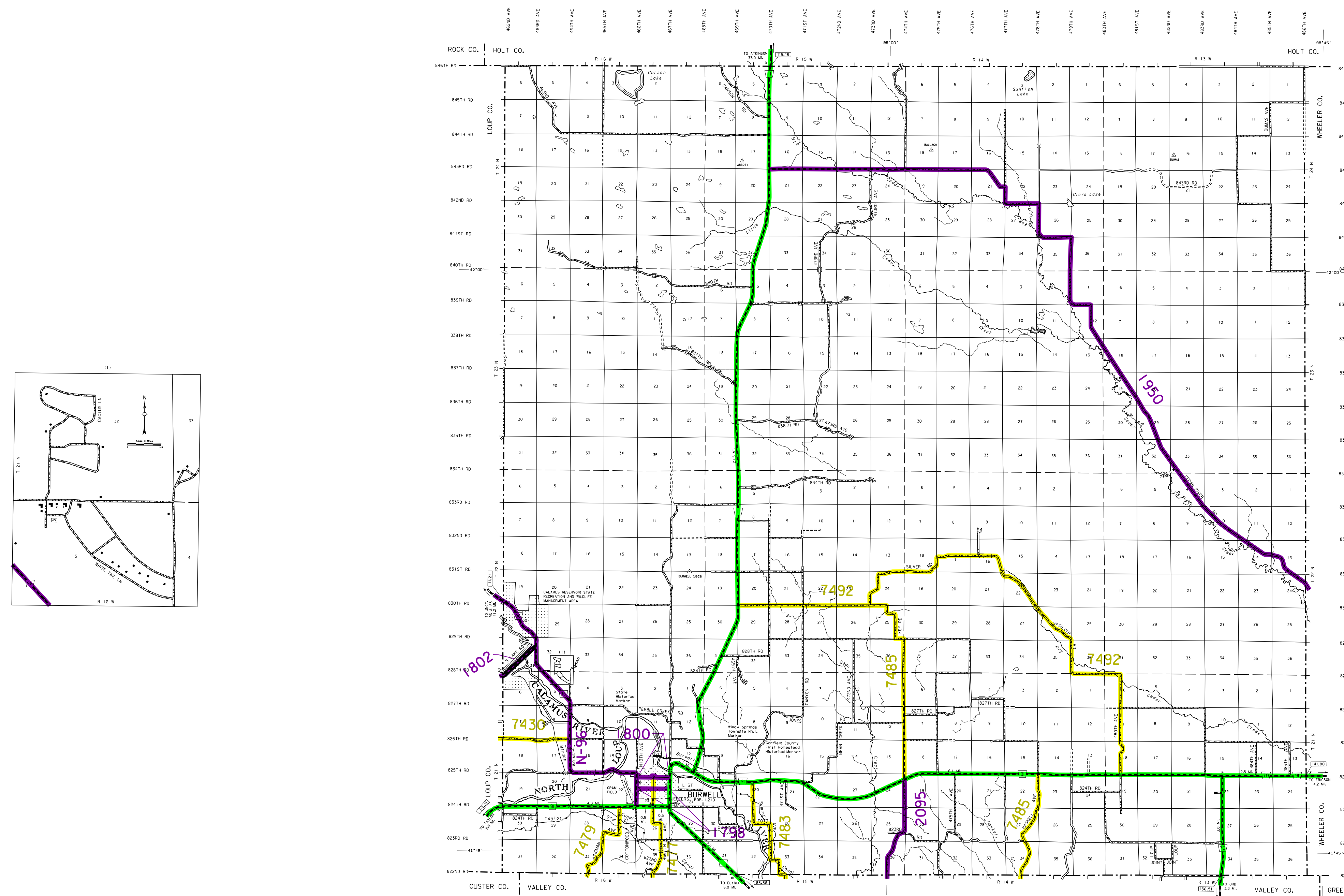
MINOR ARTERIAL.....

MAJOR COLLECTOR.....

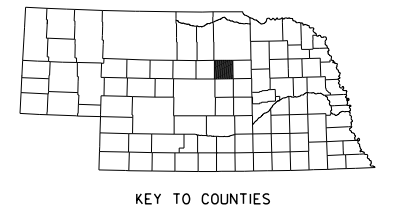
MINOR COLLECTOR.....

URBANIZED BOUNDARY.....

All Roads Not Otherwise Indicated Are Classified As Local.
FHWA Approval: May 28, 2015.



LAMBERT CONFORMAL CONIC PROJECTION
1983 NORTH AMERICAN DATUM
NEBRASKA COORDINATE SYSTEM



www.transportation.nebraska.gov

POPULATION AS OF 2010 CENSUS
STATE HIGHWAYS CORRECTED TO 2014

This map is to be used for information only and is not intended to show ownership or to be definitive on any roads one builds under Nebraska Law. The Nebraska Department of Roads makes no warranties, guarantees or representations for the accuracy of this information and assumes no liability for errors or omissions. Any discrepancies should be reported to NDOR.