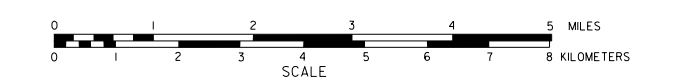


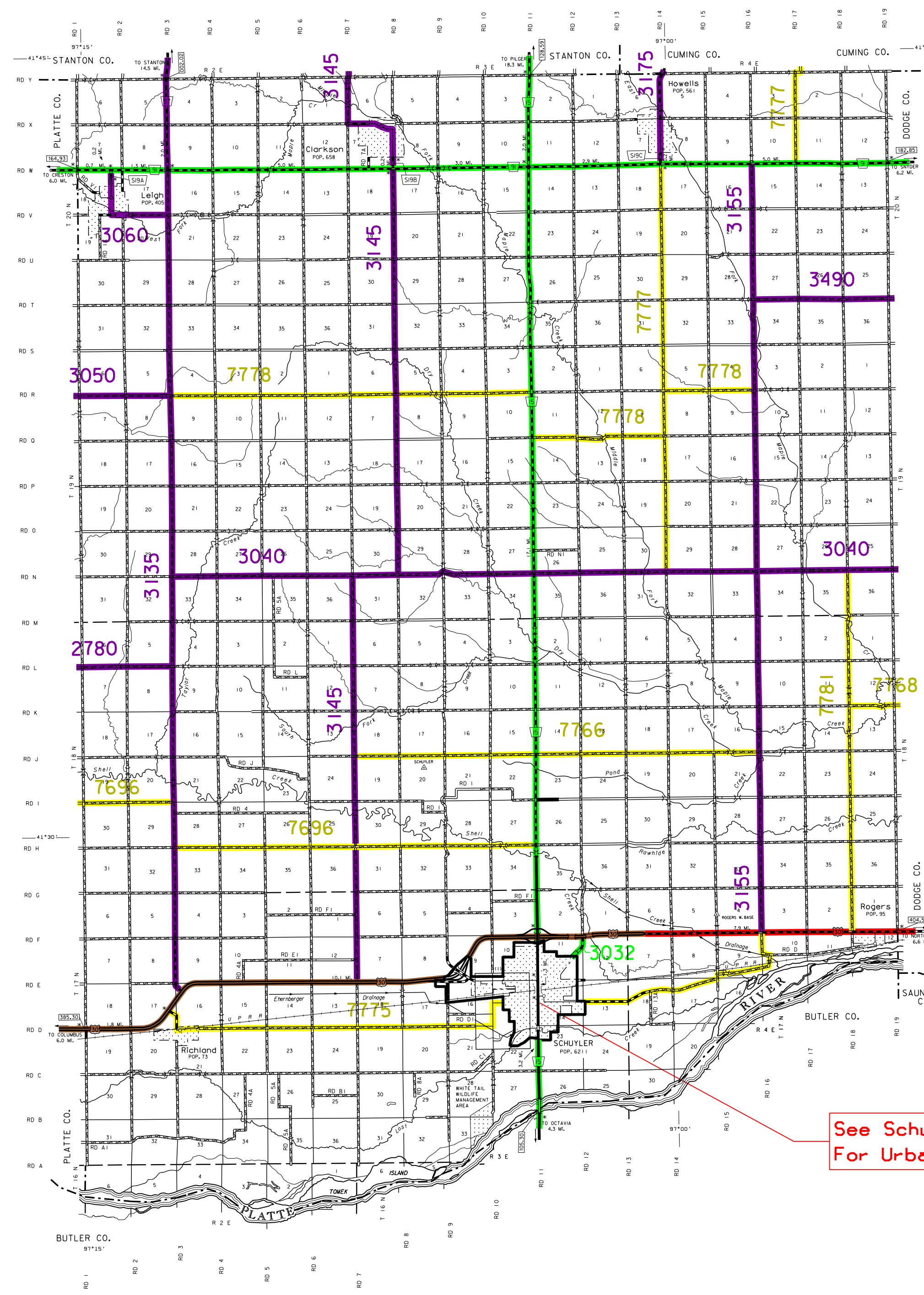
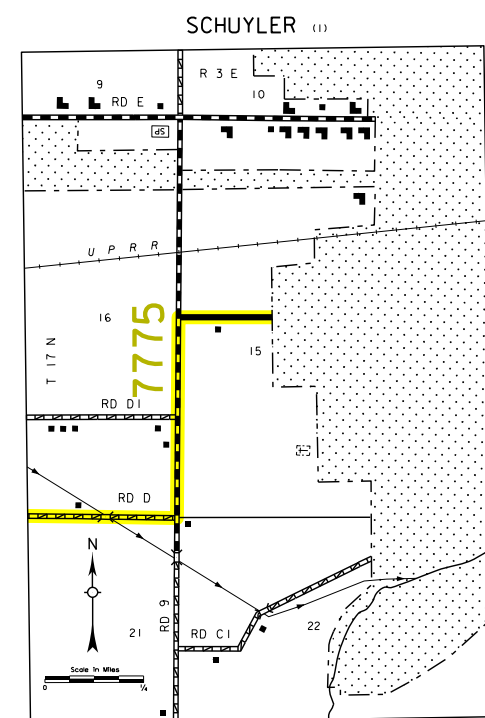
GENERAL HIGHWAY MAP COLFAX COUNTY NEBRASKA

PREPARED BY THE
DEPARTMENT OF ROADS
GIS/MAPPING SECTION
IN COOPERATION WITH THE
U.S. DEPARTMENT OF TRANSPORTATION
FEDERAL HIGHWAY ADMINISTRATION



INVENTORY DATE:
2011

DATE	REVISION
FEBRUARY 2011	COUNTY SUPPLY
AUG. 2013	SCHUYLER CORP./LWIS



LEGEND

- Primitive Road
- Unimproved Road
- Gravel or Crushed Rock
- Asphalt/Bituminous Surface
- Multiple Lane Undivided Highway
- Asphalt/Bituminous Surface
- Concrete/Gravel Surface
- Multiple Lane Undivided Highway
- Concrete/Gravel Surface
- Divided Highway
- Highway with Full
- Range of Access
- Side Roads and Streets
- 811 NUMBERED ROADS
- Interstate Highway
- State-Numbered Highway
- State-Numbered Highway Spur
- State-Numbered Highway Line
- Highway Reference Point Number
- Interstate Exit Number
- Wide Stream
- Narrow Stream
- Irrigation Ditch
- Reservoir, Pond or Lake
- Reservoir with Dam
- Highway Bridge Any Type
- Small Bridges Closely Spaced
- General Bridge
- Arch Bridge
- Truss Bridge
- Pedestrian Overpass
- Railroad Overpass
- Railroad Underpass
- Railroad
- Dam with Road on Top
- Corral Guard
- Dwelling
- Row of Dwellings
- Cemetery
- Church or Other Religious Institution
- Church with Cemetery Adjacent
- Hospital
- Business
- Industrial Plant
- Filling Station
- Grain Elevator
- Aggregate Pile
- Agricultural Experimental Station
- Educational Institutions
- Public Use Area
- Recreational Facilities
- Rest Area
- Ranger Station
- Fish Hatchery
- Community Hall
- Correctional Institution
- Tourist Court or Motel
- Monument-Shell
- Museum
- Fire Station
- Courthouse
- Armory
- Post Office
- Highway Maintenance Yard
- Pump Area
- Sewage Disposal Plant
- Water Supply Stand Pipe
- Road or T.V. Station
- Weight Station or Point of Entry
- Connector or Multiple Airport
- Airport with Paved Runways
- State Boundary
- County Boundary
- Township Line
- Section Line
- Corporate Limit Lines
- Parks and Other Reservations
- Boundary Limits of Area Shown in
- Enlargements (see enlargements for culture)
- State Capital
- County Seat
- Other Cities and Villages
- Incorporated City or Village
- Triangulation Station
- Points Between Which Distances are
- Measures Indicated There
- Latitude and Longitude

LEGEND
NATIONAL FUNCTIONAL CLASSIFICATION

INTERSTATE [Red Dotted Line]

OTHER FREEWAYS & EXPRESSWAYS [Blue Dotted Line]

OTHER PRINCIPAL ARTERIALS [Green Dotted Line]

MINOR ARTERIAL [Yellow Dotted Line]

MAJOR COLLECTOR [Purple Dotted Line]

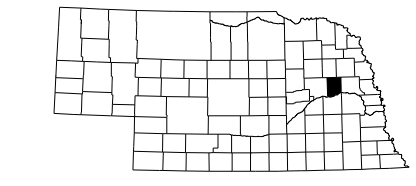
MINOR COLLECTOR [Orange Dotted Line]

URBANIZED BOUNDARY [Black Dashed Line]

See Schuyler Urban Area Map
For Urban System Details.

All Roads Not Otherwise Indicated Are Classified As Local.
FHWA Approval: May 20, 2016.

LAMBERT CONFORMAL CONIC PROJECTION
1983 NORTH AMERICAN DATUM
NEBRASKA COORDINATE SYSTEM



POPULATION AS OF 2010 CENSUS
STATE HIGHWAYS CORRECTED TO 2011
DIGITAL AERIAL PHOTOGRAPHY 2009