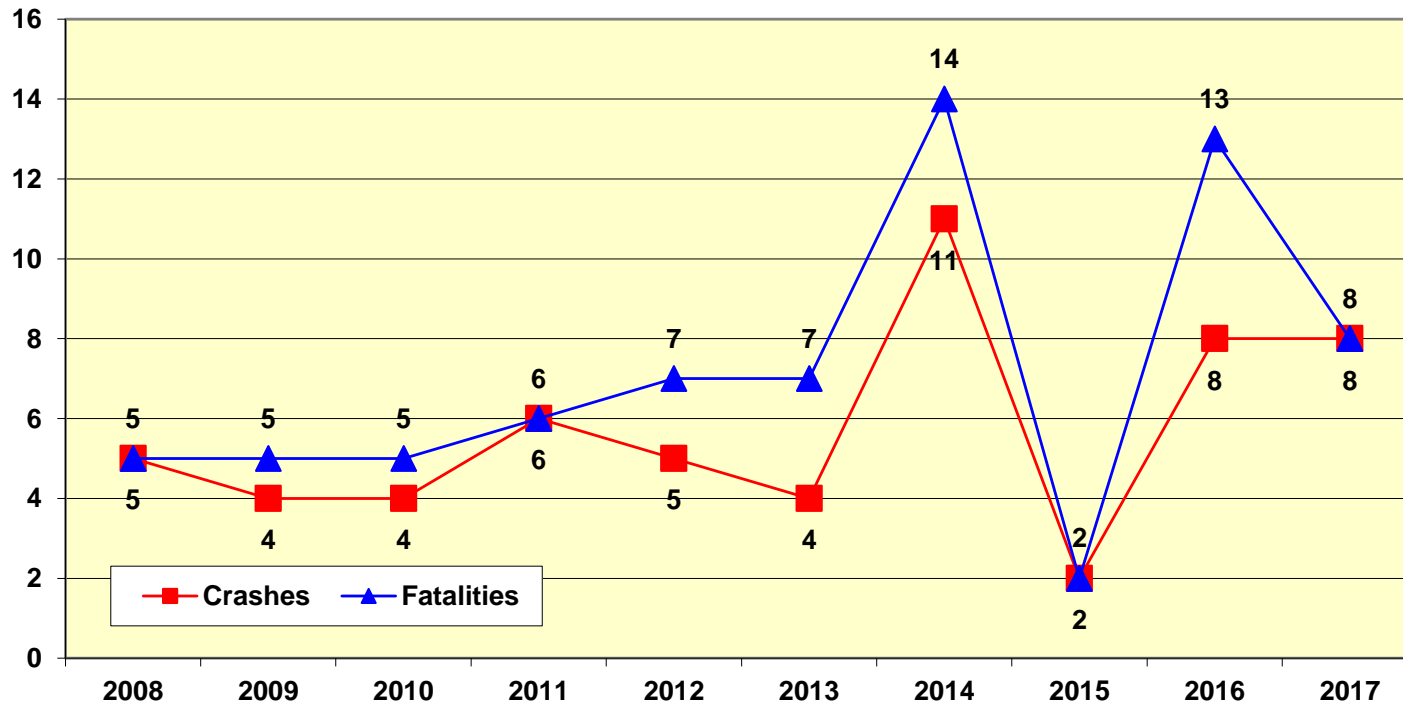


Nebraska Motor Vehicle Fatal Traffic Crashes in Work Zones - All Roadways 2008 - 2017



Prepared by: NDOT- Highway Safety Office, PO Box 94612, Lincoln, NE 68509

Source: Nebraska Department of Transportation - Traffic Engineering Division/Highway Safety

Revised: 8/1/18