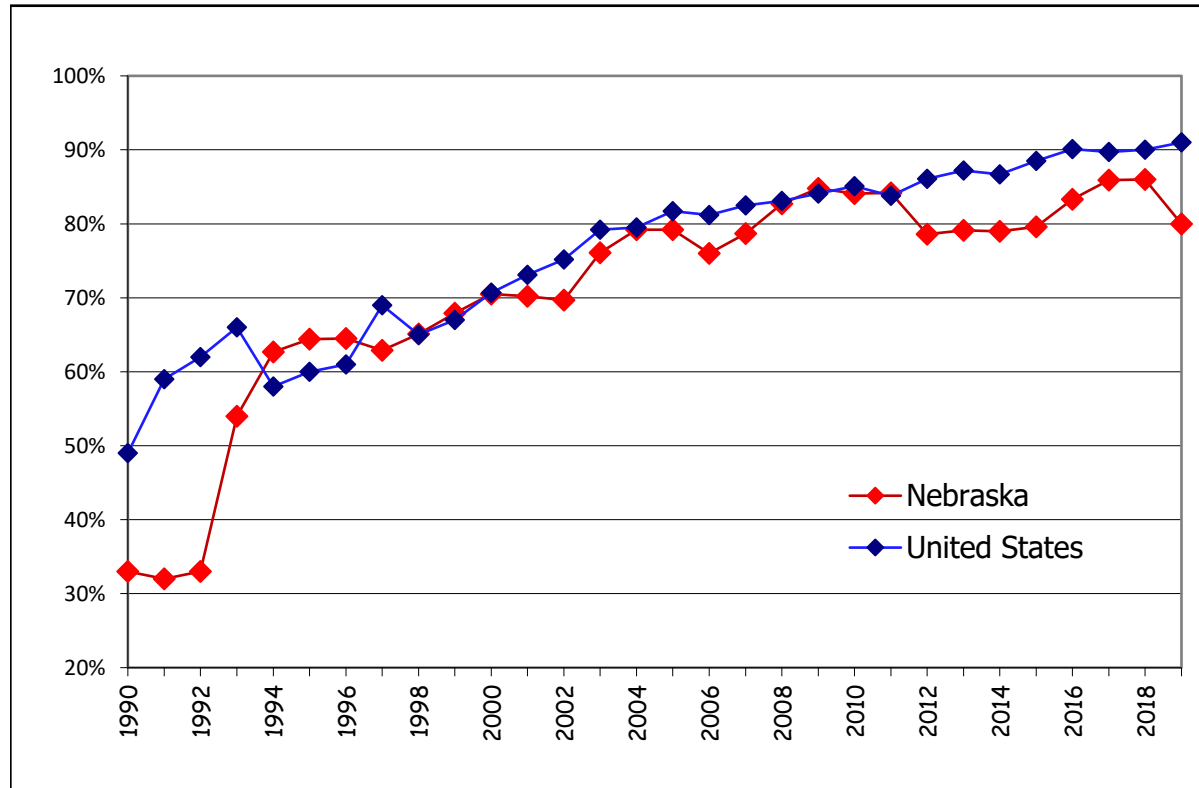


## NEBRASKA VS. UNITED STATES OBSERVED SAFETY BELT USAGE RATES



THE SAFETY BELT LAW TOOK EFFECT ON SEPTEMBER 6, 1985; REPEALED BY VOTERS ON NOVEMBER 4, 1986.

THE REPEAL OF THE SAFETY BELT LAW BECAME EFFECTIVE ON DECEMBER 1, 1986.

THE CURRENT SAFETY BELT LAW TOOK EFFECT ON JANUARY 1, 1993.

Prepared by: NDOT - Highway Safety Office, PO Box 94612, Lincoln, NE 68509

Last Date Modified: October 23, 2020