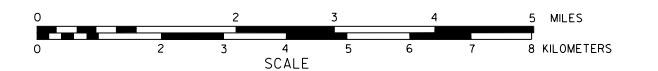


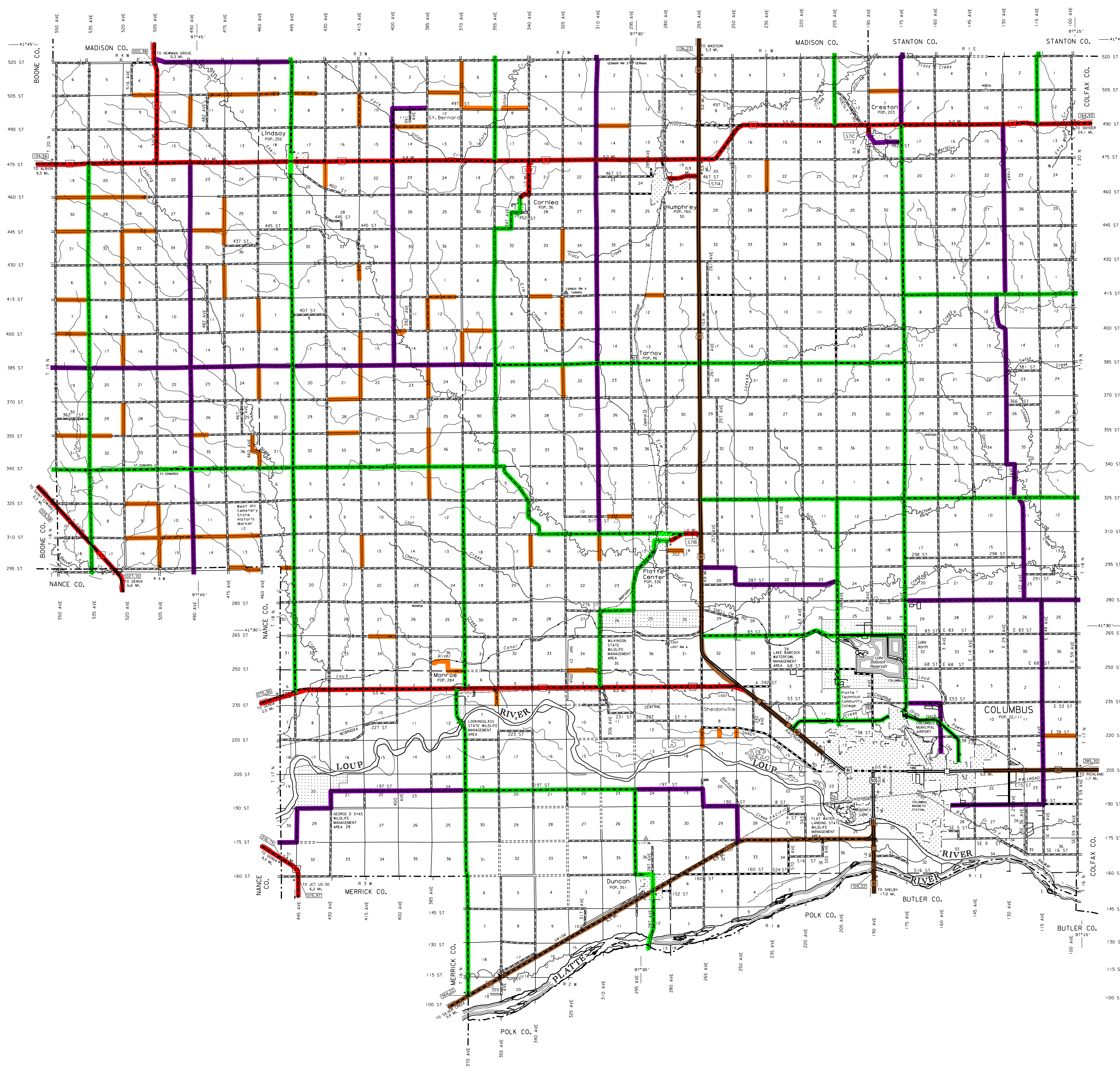
GENERAL HIGHWAY MAP PLATTE COUNTY NEBRASKA

PREPARED BY THE
DEPARTMENT OF ROADS
GIS/MAPPING SECTION
IN COOPERATION WITH THE
U.S. DEPARTMENT OF TRANSPORTATION
FEDERAL HIGHWAY ADMINISTRATION



INVENTORY DATE:
2016

REVISION HISTORY	
DATE	REVISION
2017	HWY SUPERSEDEMENT MAP
FEB 2008	UPDATE G1T SYSTEM
APR 2016	COURT UPDATE



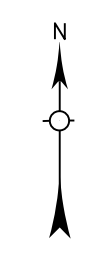
LEGEND

- | | | | |
|--|-------|--|-------|
| Primitive Road | | Filling Station | |
| Unimproved Road | | Grain Elevator | |
| Gravel or Graded Road | | Aggregate Pile | |
| Asphalt/Bituminous Surface | | Agricultural Experiment Station | |
| Multiple Lane Undivided Highway | | Educational Institutions | |
| Asphalt/Bituminous Surface | | Public Use Area | |
| Concrete/Brick Surface | | State-Numbered Highway | |
| Multiple Lane Divided Highway | | Recreational Facilities | |
| Concrete/Brick Surface | | Rest Area | |
| Divided Highway | | Winters Reservoir Sta. Telephone | |
| Interstate Highway with Full Control of Access | | Range Station | |
| State Roads and Streets | | Fish Hatchery | |
| 911 NAMED/Numbered Roads | | Community Hall | |
| Interstate-Numbered Highway | | Correctional Institution | |
| State-Numbered Highway | | Tourist Court or Motel | |
| State-Numbered Highway Spur | | Monument-Shed | |
| State-Numbered Highway LPM | | Museum | |
| Highway Reference Post Number | | Fire Station | |
| Interstate Exit Number | | Courthouse | |
| Wide Street | | Armory | |
| Narrow Street | | Post Office | |
| Irrigation Ditch | | Highway Maintenance Shop | |
| Reservoir, Pond or Lake | | Dump Area | |
| Reservoir With Dam | | Sewage Disposal Plant | |
| Highway Bridge-Any Type | | Water Supply Stand Pipe | |
| Over 25 Spans | | Roads or TV Station | |
| Small Bridges-Closely Spaced | | State Boundary | |
| Over 25 Spans | | County Boundary | |
| General Bridge-Any Type | | Township Line | |
| Arch Bridge | | Section Line | |
| Truss Bridge | | Corporate Limit Lines | |
| Preservation Overpass | | Parks and Other Reservations | |
| Recreation Overpass | | Boundary Limits of Areas Shown in Enhancements | |
| Railroad Overpass | | State Capitol | |
| Railroad Underpass | | County Seat | |
| Open-air Road on Top | | Other Cities and Villages | |
| Cattle Guard | | Incorporated City or Village | |
| Dwelling | | Triangulation Station | |
| Row of Dwellings | | Points Between Which Distances are Measured Indicated True | |
| Cemetery | | Latitude and Longitude | |
| Church or Other Religious Institution | | | |
| Church with Cemetery Adjacent | | | |
| Hospital | | | |
| Business | | | |
| Industrial Plant | | | |

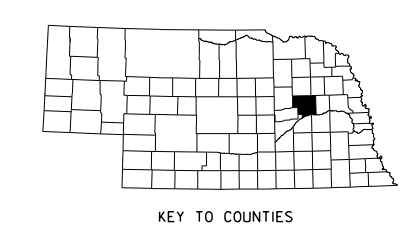
LEGEND STATE FUNCTIONAL CLASSIFICATION

- INTERSTATE
- EXPRESSWAY
- MAJOR ARTERIAL
- OTHER ARTERIAL
- COLLECTOR
- REMOTE RESIDENTIAL (Rural Only)
- MINIMUM MAINTENANCE (Rural Only)
- SCENIC RECREATION (Rural Only)
- URBANIZED BOUNDARY

All Roads Not Otherwise Indicated Are Classified As Local



LAMBERT CONFORMAL CONIC PROJECTION
1983 NORTH AMERICAN DATUM
NEBRASKA COORDINATE SYSTEM



POPULATION AS OF 2010 CENSUS
STATE HIGHWAYS CORRECTED TO 2016

GENERAL HIGHWAY MAP

PLATTE COUNTY

NEBRASKA 71

www.transportation.nebraska.gov