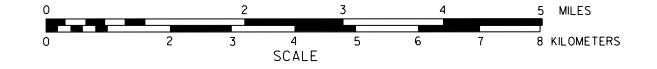


GENERAL HIGHWAY MAP PIERCE COUNTY NEBRASKA

PREPARED BY THE
DEPARTMENT OF ROADS
GIS/MAPPING SECTION
IN COOPERATION WITH THE
U.S. DEPARTMENT OF TRANSPORTATION
FEDERAL HIGHWAY ADMINISTRATION
2015



DATE	REVISION HISTORY	REVISION
JUN 2007	PIERCE COUNTY	
NOV 2015		

LEGEND

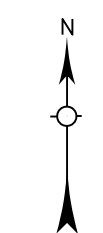
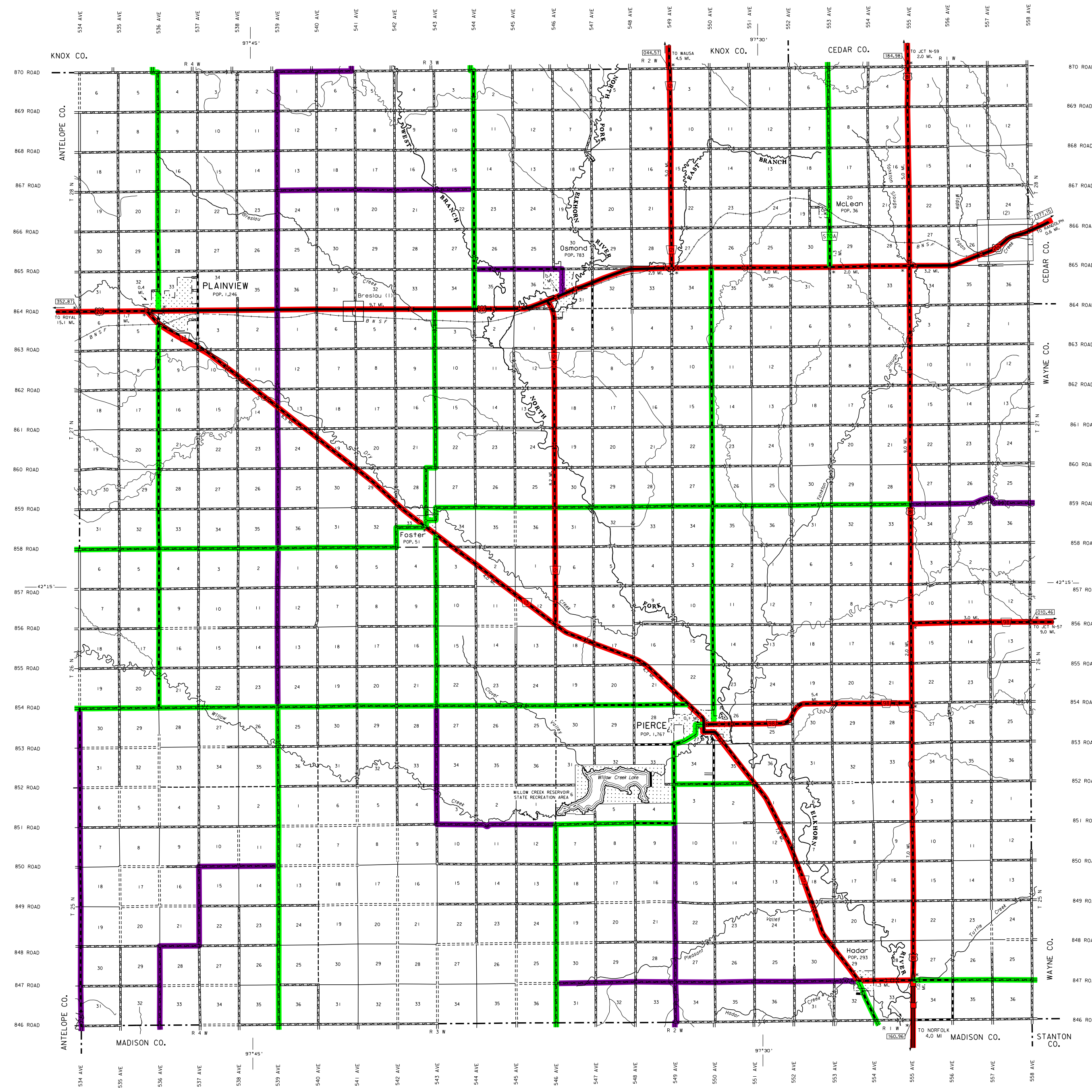
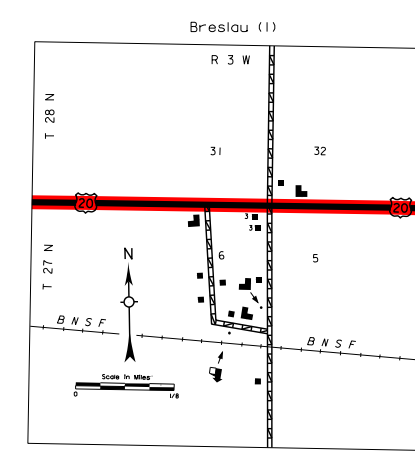
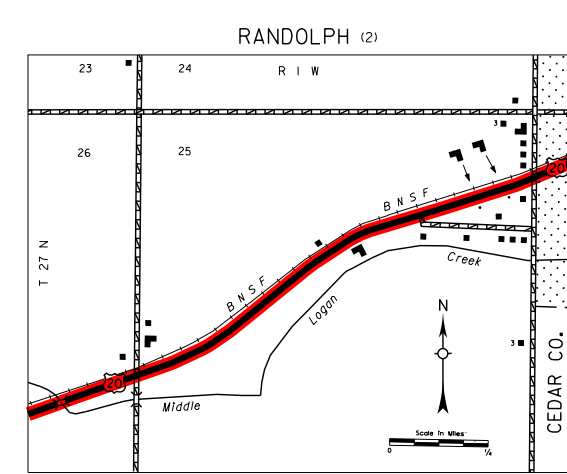
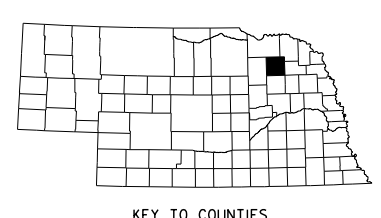
- Unimproved Road
- Gravel or Crushed Road
- Asphalt/Bituminous Surface
- Multiple Lane Undivided Highway
- Asphalt/Bituminous Surface
- Concrete/Asphalt Surface
- Multiple Lane Undivided Highway
- Concrete/Asphalt Surface
- Divided Highway with Full Control of Access
- Side Roads and Streets
- State-Numbered Highway
- US-Numbered Highway
- State-Numbered Highway Spur
- State-Numbered Highway Line
- Highway Reference Post Number
- Interstate Exit Number
- Wide Stream
- Narrow Stream
- Irrigation Ditch
- Reservoir, Pond or Lake
- Weight Station or Part of Entry
- Small Bridge-Any Type
- Small Bridges-Closely Spaced
- Truss Bridge
- Pedestrian Underpass
- Railroad Overpass
- Railroad Underpass
- Church or Other Religious Institution
- Church with Cemetery Adjacent
- Highway
- Bus/Tram
- Industrial Plant
- Filling Station
- Grain Elevator
- Aggregate Pit
- Agricultural Experimental Station
- Educational Institutions
- Public Use Area
- Regulatory Agency
- Small Reservoir, Pond, Lake, or Stream
- Rest Area
- Ranger Station
- Fish Hatchery
- Community Hall
- Correctional Institution
- Tourist Court or Motel
- Museum-Small
- Firestation
- Courthouse
- Armory
- Highway Maintenance Yard
- Dune Area
- Sewage Disposal Plant
- River Safety Stand Pipe
- Railroad or TV Station
- Commercial or Municipal Airport
- Airport with Royal Airways
- State Boundary
- County Boundary
- Township Line
- Section Line
- Corporate Limit Lines
- Parks and Other Reservations
- Boundary Limits of Area Shown in Other Maps
- State Capital
- County Seat
- Other Cities and Villages
- Incorporated City or Village
- Interpretation Station
- Points Between which Distances are Measured Indicated Therein
- Latitude and Longitude

LEGEND

- #### STATE FUNCTIONAL CLASSIFICATION
- INTERSTATE
 - EXPRESSWAY
 - MAJOR ARTERIAL
 - OTHER ARTERIAL
 - COLLECTOR
 - REMOTE RESIDENTIAL (Rural Only)
 - MINIMUM MAINTENANCE (Rural Only)
 - SCENIC RECREATION (Rural Only)
 - URBANIZED BOUNDARY

All Roads Not Otherwise Indicated Are Classified As Local

LAMBERT CONFORMAL CONIC PROJECTION
1983 NORTH AMERICAN DATUM
NEBRASKA COORDINATE SYSTEM



STATE HIGHWAYS CORRECTED TO 2015
AERIAL PHOTOGRAPHY TAKEN IN 2012

www.transportation.nebraska.gov