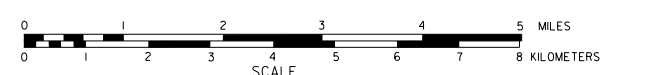


# GENERAL HIGHWAY MAP PERKINS COUNTY NEBRASKA

PREPARED BY THE  
**DEPARTMENT OF ROADS**  
GIS/MAPPING SECTION  
IN COOPERATION WITH THE  
**U.S. DEPARTMENT OF TRANSPORTATION**  
FEDERAL HIGHWAY ADMINISTRATION



INVENTORY DATE:  
**2004**

REVISION HISTORY	
NAME	DATE
C. VICKERS	MARCH 2006
M. COLLETT	APRIL 2004
J. COLLETT	SEP. 2002

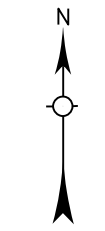
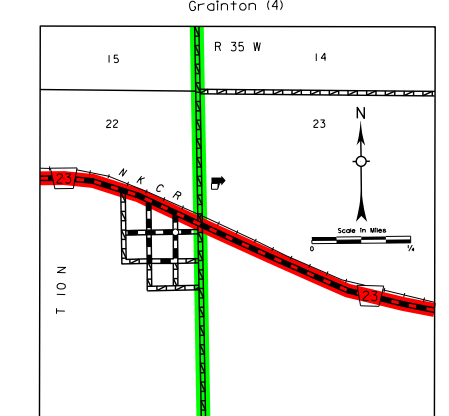
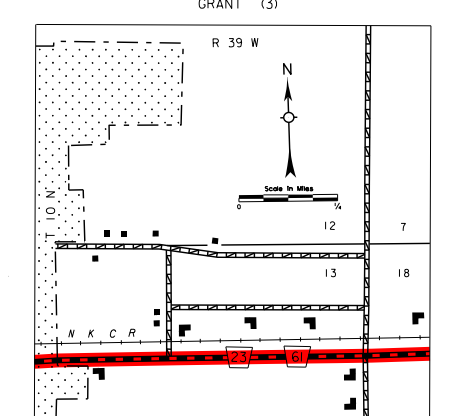
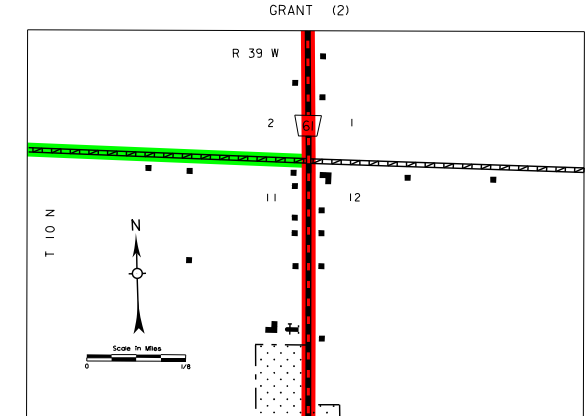
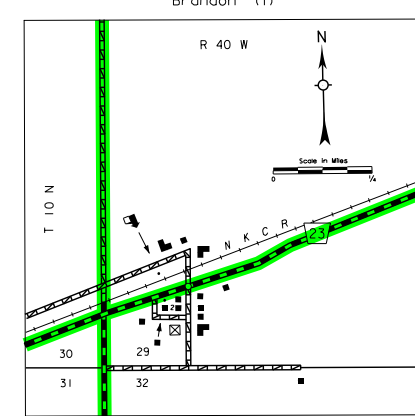
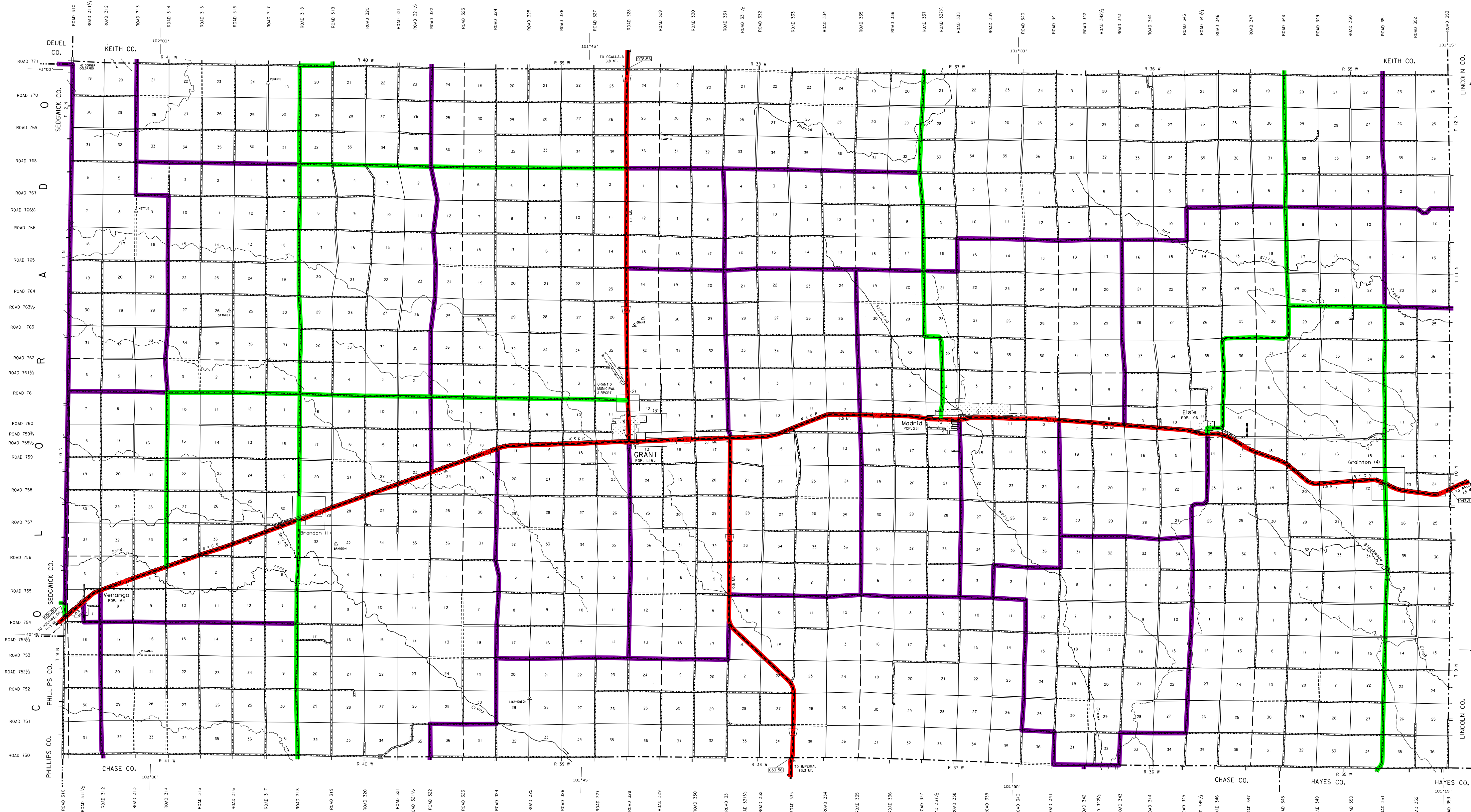
### LEGEND

- |  |  |
|--|--|
| Primitive Road                                 | Filling Station  |
| Unimproved Road                                | Grain Elevator   |
| Gravel or Graded Road                          | Aggregate Pit  |
| Asphalt/Bituminous Surface                     | Agricultural Experimental Station                          |
| Multiple Lane Undivided Highway                | Educational Institutions                                   |
| Asphalt/Bituminous Surface                     | Public Use of Public Grounds                               |
| Concrete/Bituminous Surface                    | Recreation Facilities                                      |
| Divided Highway                                | Rest Areas   |
| Interstate Highway with Full Control of Access | Ranger Station   |
| Sole Roads and Streets                         | Fish Hatchery  |
| State-Numbered Roads                           | Community Hall   |
| Interstate-Numbered Highway                    | Correctional Institution                                   |
| State-Numbered Highway                         | Monument-Small   |
| State-Numbered Highway Spur                    | Museum   |
| State-Numbered Highway Link                    | Fire Station   |
| Highway Reference Point Number                 | Courthouse   |
| Interstate Exit Number                         | Armory   |
| Wide Stream                                    | Highway Maintenance Yard                                   |
| Narrow Stream                                  | Dump Area  |
| Irrigation Ditch                               | Sewage Disposal Plant                                      |
| Reservoir, Pond or Lake                        | Water Supply Stand Pipe                                    |
| Reservoir With Dam                             | Radio or TV Station  |
| Highway Bridge Any Type                        | Weight Station or Port of Entry                            |
| Minor Bridge                                   | Commercial or Municipal Airport                            |
| Small Bridges Closely Spaced                   | Airport with Road Runways                                  |
| Highways with Gravel                           | State Boundary   |
| General Bridge                                 | Township Line  |
| Truss Bridge                                   | Section Line   |
| Pedestrian Underpass                           | Corporate Limit Lines                                      |
| Railroad Overpass                              | Parks and Other Reservations                               |
| Railroad Underpass                             | Boundary Limits of Area Shown in Other Reports             |
| Railroad                                       | State Capital  |
| Dam with Road on Top                           | County Seat  |
| Carte Guard                                    | Other Cities and Villages                                  |
| Dwelling                                       | Incorporated City or Village                               |
| Row of Dwellings                               | Transportation Station                                     |
| Cemetery                                       | Points Between which Distances are Measured Indicated Thus |
| Church or Other Religious Institution          | Latitude and Longitude                                     |
| Church with Cemetery Adjacent                  |  |
| Hospital                                       |  |
| Business                                       |  |
| Industrial Plant                               |  |

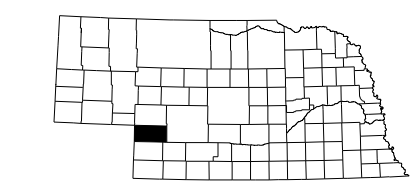
### LEGEND

- #### STATE FUNCTIONAL CLASSIFICATION
- INTERSTATE .....
  - EXPRESSWAY .....
  - MAJOR ARTERIAL .....
  - OTHER ARTERIAL .....
  - COLLECTOR .....
  - REMOTE RESIDENTIAL (Rural Only) .....
  - MINIMUM MAINTENANCE (Rural Only) .....
  - SCENIC RECREATION (Rural Only) .....
  - URBANIZED BOUNDARY .....

All Roads Not Otherwise Indicated Are Classified As Local



LAMBERT CONFORMAL CONIC PROJECTION  
1885 NORTH AMERICAN DATUM  
NEBRASKA COORDINATE SYSTEM



POPULATION AS OF 2010 CENSUS  
STATE HIGHWAYS CORRECTED TO 2007  
DIGITAL AERIAL PHOTOGRAPHY (DAPI)

This map is to be used for information only and is not intended to show ownership or to be definitive on which roads are public under Nebraska Law. The Nebraska Department of Roads makes no warranties, guarantees or representations for the accuracy of this information and assumes no liability for errors or omissions, or inconsistencies, should be reported to NDOR.

www.transportation.nebraska.gov