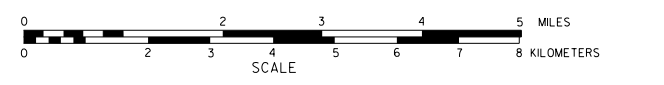


# GENERAL HIGHWAY MAP NUCKOLLS COUNTY NEBRASKA

PREPARED BY THE  
DEPARTMENT OF ROADS  
GIS/MAPPING SECTION  
IN COOPERATION WITH THE  
U.S. DEPARTMENT OF TRANSPORTATION  
FEDERAL HIGHWAY ADMINISTRATION



INVENTORY DATE:  
2016

DATE	REVISION	REASON
JUNE 2013	COUNTY SUPERINTENDENT	
JUNE 2014	GIS SYSTEM	
AUG 2015	CORRECT	

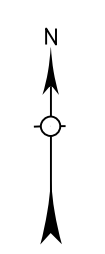
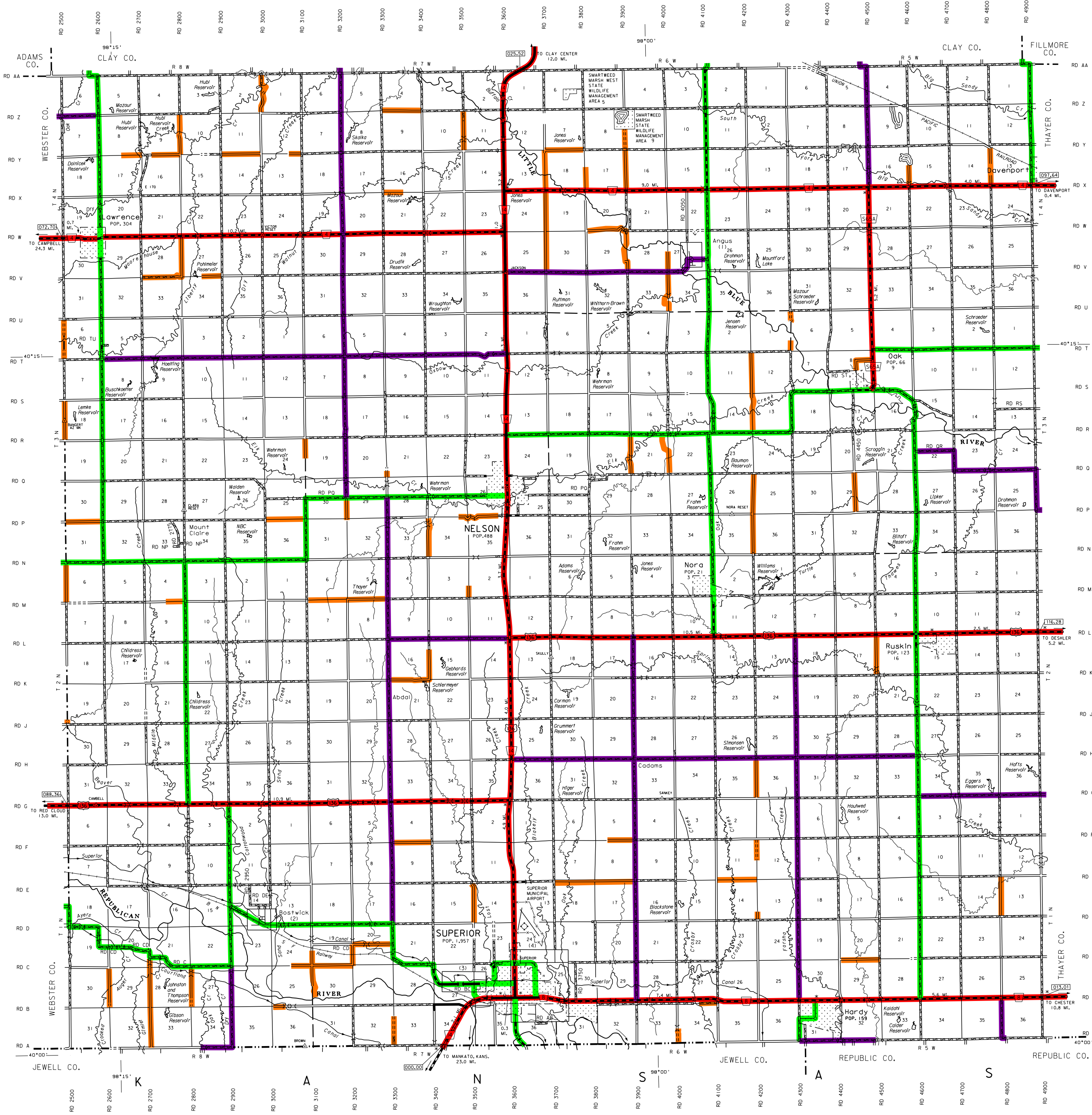
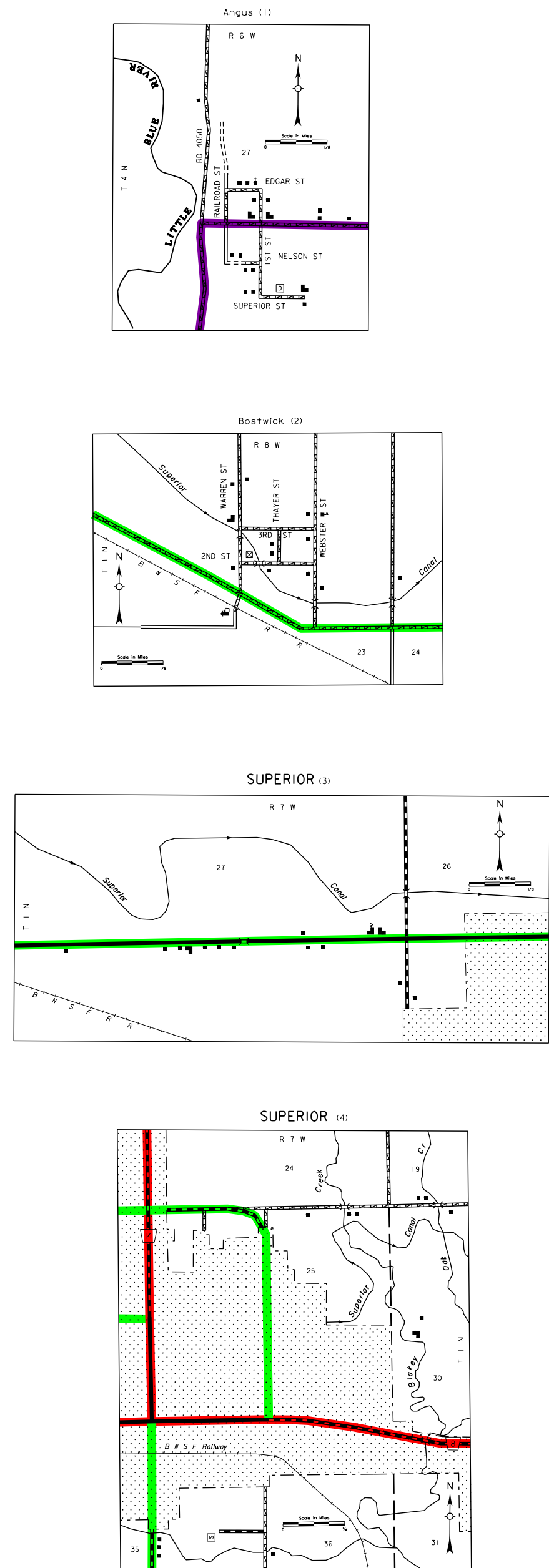
### LEGEND

- Priority Road
- Unimproved Road
- Gravel or Graded Road
- Asphalt/Bituminous Surface
- Multi Lane Undivided Highway
- Asphalt/Bituminous Surface
- Concrete/Brick Surface
- Multi Lane Undivided Highway
- Concrete/Brick Surface
- Divided Highway
- Interstate Highway with Full Control of Access
- State Highway
- State Highway with Full Control of Access
- 911 NAMED/Numbered Roads
- Interstate Numbered Highway
- US Numbered Highway
- State Numbered Highway
- State Numbered Highway Spur
- State Numbered Highway Link
- Highway Reference Post Number
- Interstate Exit Number
- Wide Street
- Narrow Street
- Irrigation Ditch
- Reservoir, Pond or Lake
- Reservoir, With Dam
- Small Bridge-Closely Spaced
- Large Bridge-Widely Spaced
- Arch Bridge
- Truss Bridge
- Pedestrian Underpass
- Railroad Overpass
- Railroad Underpass
- Railroad
- Dam with Road on Top
- Corral Guard
- Dwelling
- Row of Dwellings
- Cemetery
- Church or Other Religious Institution
- Church with Cemetery Adjacent
- Hospital
- Business
- Industrial Plant
- Filling Station
- Grain Elevator
- Aggregate Pit
- Agricultural Experimental Station
- Educational Institution
- Public Use Area
- Recreational Facilities
- Rest Area
- Ranger Station
- Fire Station
- Community Hall
- Courthouse
- Tourist Court or Motel
- Monument/Shell
- Museum
- Firestation
- Courthouse
- Army
- Post Office
- Highway Maintenance Yard
- Camp Area
- Sewage Disposal Plant
- Water Supply Stand Pipe
- Radio or TV Station
- Religious Station or Part of Entry
- Commercial or Municipal Airport
- Airport with Paved Runways
- State Boundary
- County Boundary
- Township Line
- Section Line
- Corporate Limit Lines
- Parks and Other Reservations
- Boundary Line of Area Subject to Eminent Domain
- State Capital
- County Seat
- Other Cities and Villages
- Incorporated City or Village
- Triangulation Station
- Points Between Which Distances Are Measured Indicated Thus
- Latitude and Longitude

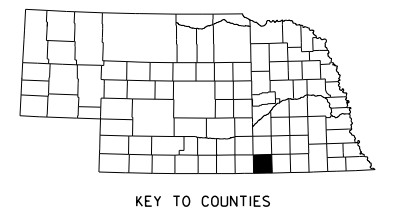
### LEGEND STATE FUNCTIONAL CLASSIFICATION

- INTERSTATE
- EXPRESSWAY
- MAJOR ARTERIAL
- OTHER ARTERIAL
- COLLECTOR
- REMOTE RESIDENTIAL (Rural Only)
- MINIMUM MAINTENANCE (Rural Only)
- SCENIC RECREATION (Rural Only)
- URBANIZED BOUNDARY

All Roads Not Otherwise Indicated Are Classified As Local



LAMBERT CONFORMAL CONIC PROJECTION  
1983 NORTH AMERICAN DATUM  
NEBRASKA COORDINATE SYSTEM



www.transportationnebraska.gov

STATE HIGHWAYS CORRECTED TO 2015  
AERIAL PHOTOGRAPHY TAKEN IN 2012

This map is to be used for information only and is not intended to give ownership or to be defective in which roads are public under Nebraska law. The Nebraska Department of Roads makes no warranty, guarantee or representation for the accuracy of this information and assumes no liability for errors or omissions. Any inaccuracies should be reported to NDOR.

GENERAL HIGHWAY MAP

NUCKOLLS COUNTY NEBRASKA 65