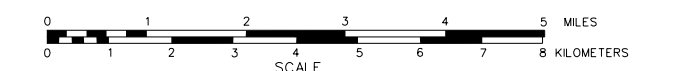


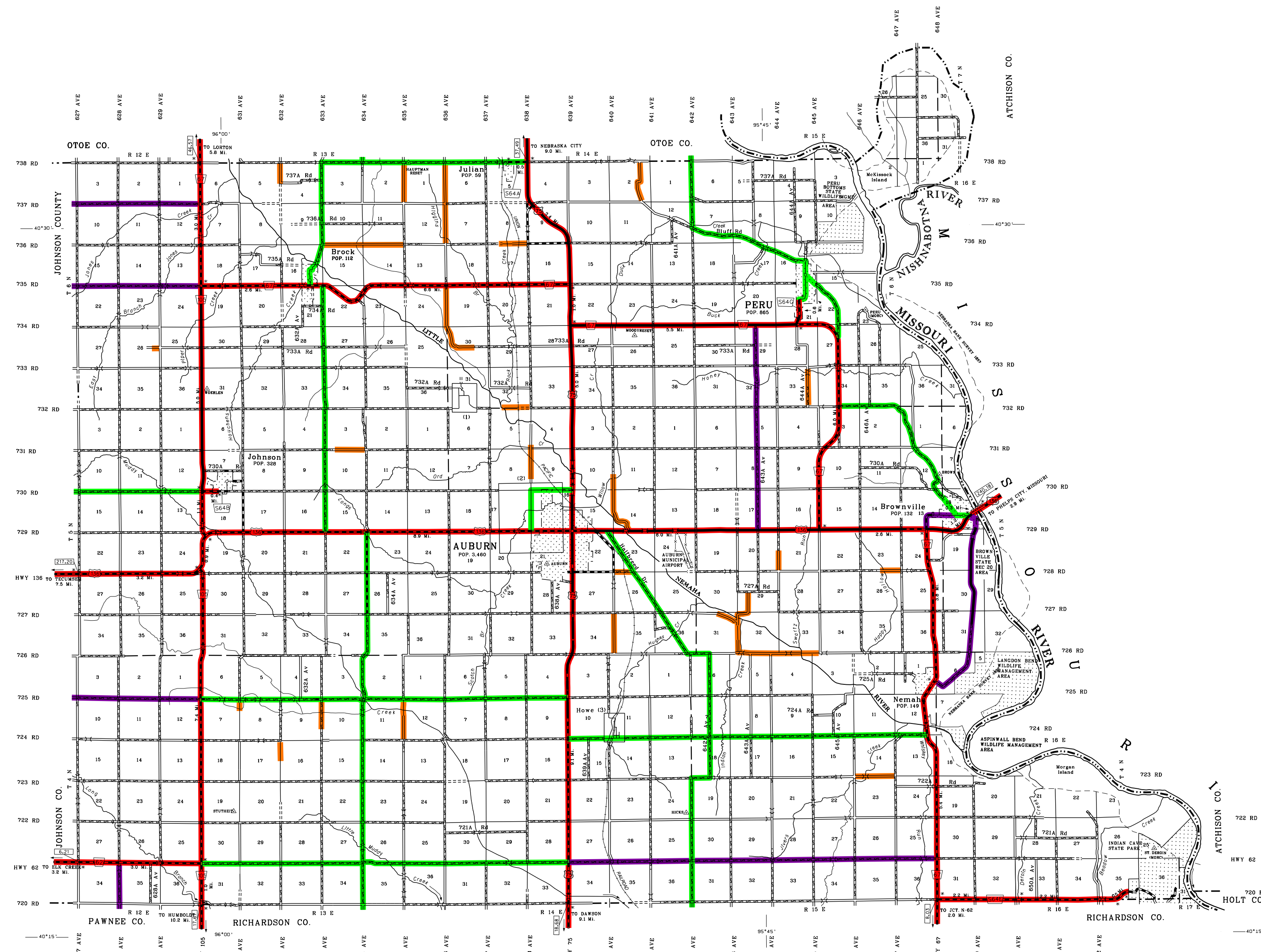
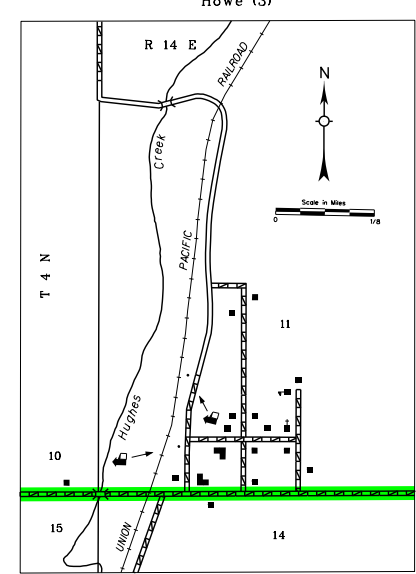
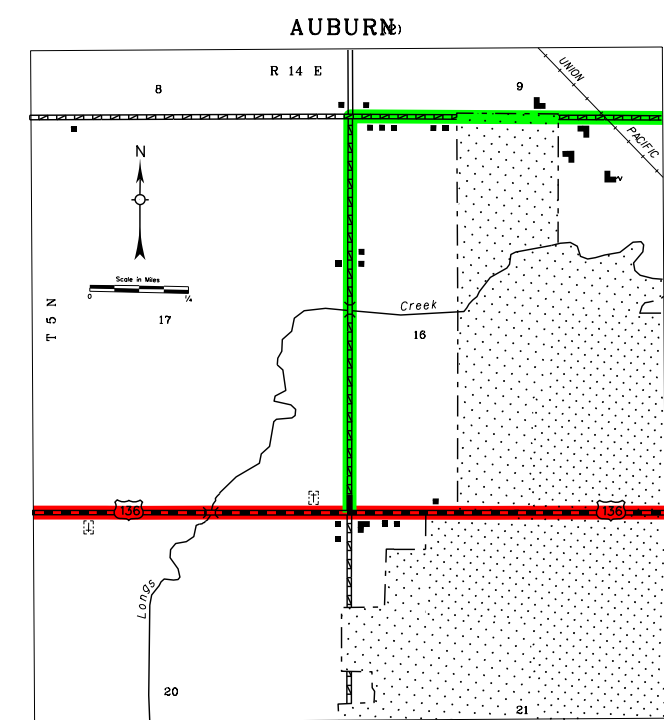
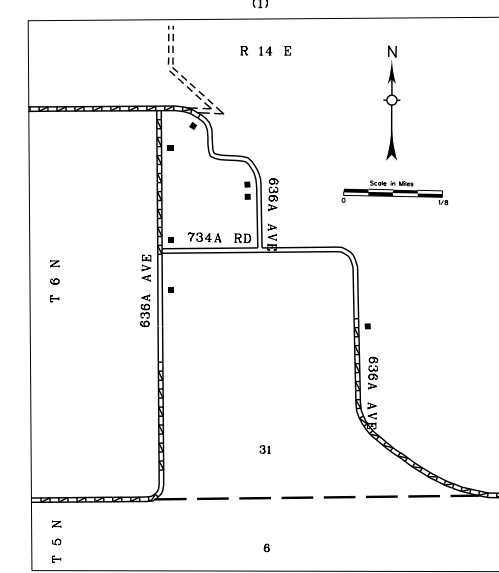
GENERAL HIGHWAY MAP NEMAHA COUNTY NEBRASKA

PREPARED BY THE
DEPARTMENT OF ROADS
GIS/MAPPING SECTION
IN COOPERATION WITH THE
U.S. DEPARTMENT OF TRANSPORTATION
FEDERAL HIGHWAY ADMINISTRATION



INVENTORY DATE:
2014

REVISION HISTORY	
DATE	REVISION
MAY 2010	CO. RD. SECT. 9 NEAR JULIAN
MAY 2014	COUNTY SUPP.
JULY 2014	COUNTY SUPP.



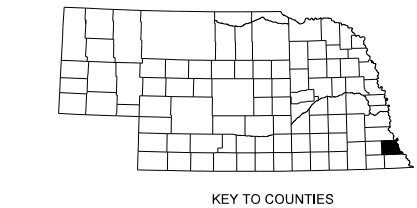
LEGEND

Primitive Road	Filling Station
Unimproved Road	Grain Elevator
Gravel or Cracked Rock	Aggregate Pit
Asphalt Bituminous Surface	Agricultural Experimental Station
Multiple Lane Undivided Highway	Educational Institutions
Asphalt Bituminous Surface	Public Use Area
Concrete/Brick Surface	Recreational Facilities
Multiple Lane Divided Highway	Rest Area
Concrete/Brick Surface	Ranger Station
Divided Highway	Fish Hatchery
Interstate Highway with Full Control of Access	Community Hall
Side Roads and Streets	Correctional Institution
911 NAMED/Numbered Roads	Tourist Court or Motel
ADAMS ROAD	Monument/Small
Interstate Numbered Highway	Museum
US-Numbered Highway	Firestation
State-Numbered Highway	Courthouse
State-Numbered Highway Spur	Post Office
Highway Reference Post Number	Highway Maintenance Yard
Interstate Exit Number	Dump Area
Wide Stream	Storage Disposal Plant
Narrow Stream	Water Supply Stand Pipe
Irrigation Ditch	Reservoir, Pond or Lake
Reservoir, Pond or Lake	Radio or TV Station
Reservoir, With Dam	Weight Station or Port of Entry
Highway Bridge-Any Type	Commercial or Municipal Airport
Narrow Stream	Airport with Paved Runways
Small Bridges Closely Spaced	State Boundary
Small Bridges Closely Spaced	County Boundary
Small Bridges Closely Spaced	Township Line
General Bridge - not a steel concrete	Section Line
Arch Bridge	Corporate Limit Lines
Truss Bridge	Parks and Other Reservations
Pedestrian Overpass	Boundary Limits of Area Shown in Disagreement with reference for extent
Pedestrian Overpass	State Capital
Railroad Overpass	County Seat
Railroad Overpass	Other Cities and Villages
Railroad	Incorporated City or Village
Dam with Road on Top	Row of Dwellings
Cattle Guard	Cemetery
Dwelling	Church or Other Religious Institution
Row of Dwellings	Church with Cemetery Adjoint
Cemetery	Hospital
Church or Other Religious Institution	Business
Church with Cemetery Adjoint	Industrial Plant
Hospital	Latitude and Longitude
Business	
Industrial Plant	

LEGEND
STATE FUNCTIONAL CLASSIFICATION

INTERSTATE
EXPRESSWAY
MAJOR ARTERIAL
OTHER ARTERIAL
COLLECTOR
REMOTE RESIDENTIAL (Rural Only)
MINIMUM MAINTENANCE (Rural Only)
SCENIC RECREATION (Rural Only)
URBANIZED BOUNDARY

All Roads Not Otherwise Indicated Are Classified As Local
Updated August 28, 2018.



POPULATION AS OF 2010 CENSUS
STATE HIGHWAYS CORRECTED TO 2014
DIGITAL AERIAL PHOTOGRAPHY (DOQQ) TAKEN IN 2012; INCONSISTENCIES SHOULD BE REPORTED TO NDOR.

LABERT CONFORMAL CONIC PROJECTION
1983 NORTH AMERICAN DATUM
NEBRASKA COORDINATE SYSTEM