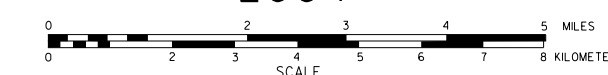
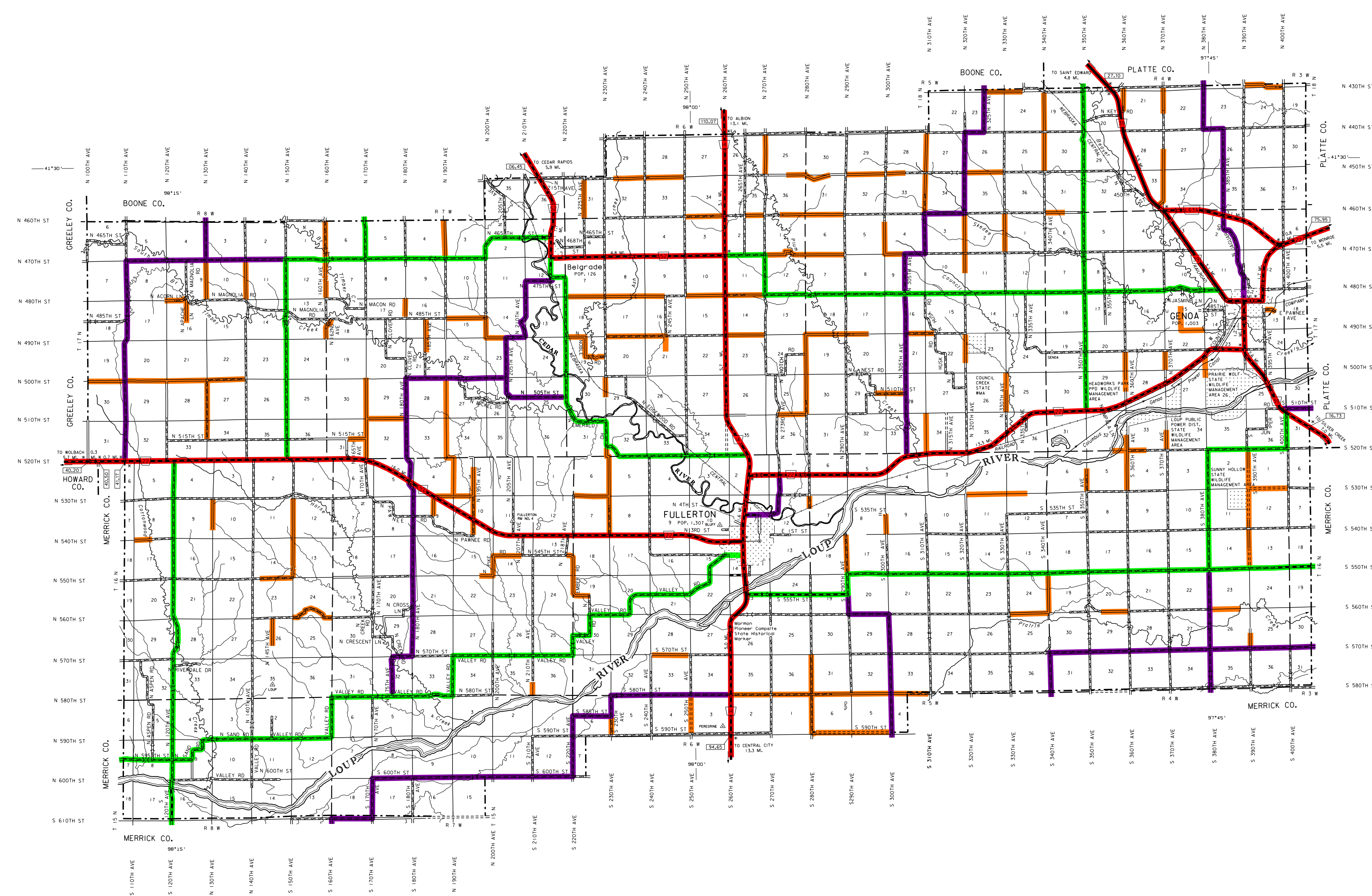


# GENERAL HIGHWAY MAP NANCE COUNTY NEBRASKA

PREPARED BY THE  
DEPARTMENT OF ROADS  
GIS/MAPPING SECTION  
IN COOPERATION WITH THE  
U.S. DEPARTMENT OF TRANSPORTATION  
FEDERAL HIGHWAY ADMINISTRATION  
2004



NAME	DATE	REVISION
L. GERRARD	APRIL 2004	COUNTY SPLIT
S. NELSON	JUNE 2005	COUNTY
L. COLCATH	JAN 2008	ST. SYSTEM
M. MOORE	AUG 2009	REALIGNMENT OF ROAD #240
	APRIL 2012	MOVED N. 300TH AVE. TYPE A LENGTH 0.117N. 04W. SEC 20-21
		MOVED FARM 0.117N. 04W. SEC 20-21
		MOVED FARM 0.117N. 04W. SEC 20-21
K. ELLISON	OCTOBER 2013	REMOVED - S 56TH ST SEC 10-11, T. 11 N.
		REMOVED - S 56TH ST SEC 10-11, T. 11 N.
		REMOVED - S 56TH ST SEC 10-11, T. 11 N.
		REMOVED - S 56TH ST SEC 10-11, T. 11 N.
		REMOVED - S 56TH ST SEC 10-11, T. 11 N.
		REMOVED - S 56TH ST SEC 10-11, T. 11 N.
L. GOLDSMITH	DECEMBER 2014	PORTION OF N39 CHANGED FROM CONC TO ASPH



### LEGEND

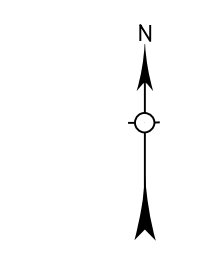
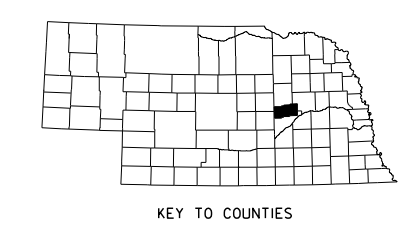
- Primitive Road
- Unimproved Road
- Gravel or Cracked Road
- Asphalt/Bituminous Surface
- Multilane Lane Underside Highway
- Asphalt/Bituminous Surface
- Concrete/Brick Surface
- Multilane Lane Underside Highway
- Concrete/Brick Surface
- Ditched Highway
- Interstate Highway with Full Control of Access
- Side Roads and Streets
- State-Numbered Highway
- Interstate-Numbered Road
- US-Numbered Highway
- State-Numbered Highway
- State-Numbered Highway Spur
- State-Numbered Highway Link
- Highway Reference Post Number
- Interstate Exit Number
- Road Station
- Narrow Stream
- Irrigation Ditch
- Reservoir, Pond or Lake
- Reservoir with Dam
- Highway Bridge-Any Type
- Small Bridges-Closely Spaced
- Highway Bridge-Any Type
- General Bridge
- Arch Bridge
- Truss Bridge
- Pedestrian Underpass
- Railroad Overpass
- Railroad Underpass
- Admission
- Dam with Road on Top
- Cattle Guard
- Dwelling
- Rock of Dwellings
- Church or Other Religious Institution
- Church with Cemetery adjacent
- Hospital
- Business
- Industrial Plant
- Filling Station
- Grain Elevator
- Aggregate Pile
- Agricultural Experimental Station
- Educational Institutions
- Public Use Area
- Recreational Facilities
- Range Station
- Rest Area
- Flank Horseway
- Community Hall
- Correctional Institution
- Tourist Court or Motel
- Museum
- Monument-Stat
- Courthouse
- Firestation
- Armory
- Post Office
- Highway Maintenance Yard
- Range Area
- Sewage Disposal Plant
- Water Supply Stand Pipe
- Roads or TV Station
- Corporate Limit Lines
- Commercial or Municipal Airport
- Airport with Paved Runways
- State Boundary
- County Boundary
- Township Line
- Section Line
- Corporate Limit Lines
- Parks and Other Reservations
- Boundary Lines of Areas Subject to Eminent Domain
- State Capital
- County Seat
- Other Cities and Villages
- Incorporated City or Village
- Triangulation Station
- Points Between Which Distances Are Measured Indicated True
- Latitude and Longitude

### LEGEND

- #### STATE FUNCTIONAL CLASSIFICATION
- INTERSTATE
  - EXPRESSWAY
  - MAJOR ARTERIAL
  - OTHER ARTERIAL
  - COLLECTOR
  - REMOTE RESIDENTIAL (Rural Only)
  - MINIMUM MAINTENANCE (Rural Only)
  - SCENIC RECREATION (Rural Only)
  - URBANIZED BOUNDARY

All Roads Not Otherwise Indicated Are Classified As Local

LAMBERT CONFORMAL CONIC PROJECTION  
1983 NORTH AMERICAN DATUM  
NEBRASKA COORDINATE SYSTEM



POPULATION AS OF 2010 CENSUS  
STATE HIGHWAYS CONNECTED TO 2014  
DIGITAL AERIAL PHOTOGRAPHY (DOADO)

This map is to be used for information only and is not intended to show ownership or to be defective in which roads are public under Nebraska Law. The Nebraska Department of Roads makes no warranty, guarantee or representation for the accuracy of the information and disclaims no liability for errors or omissions. Any inaccuracies should be reported to NDOR.