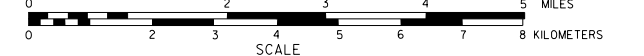


GENERAL HIGHWAY MAP MORRILL COUNTY NORTH HALF NEBRASKA

PREPARED BY THE
DEPARTMENT OF ROADS
GIS/MAPPING SECTION
IN COOPERATION WITH THE
U.S. DEPARTMENT OF TRANSPORTATION
FEDERAL HIGHWAY ADMINISTRATION

2015



| NAME | DATE | REVISION |
|--------------|---------------|---------------------------|
| L. Colquhoun | August 2006 | 911 System |
| L. Colquhoun | December 2008 | VI System |
| | July 2012 | County |
| | January 2014 | County Split from Neffner |

LEGEND

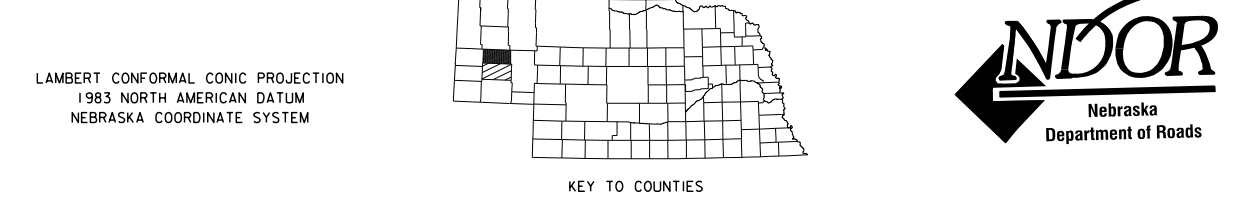
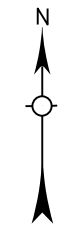
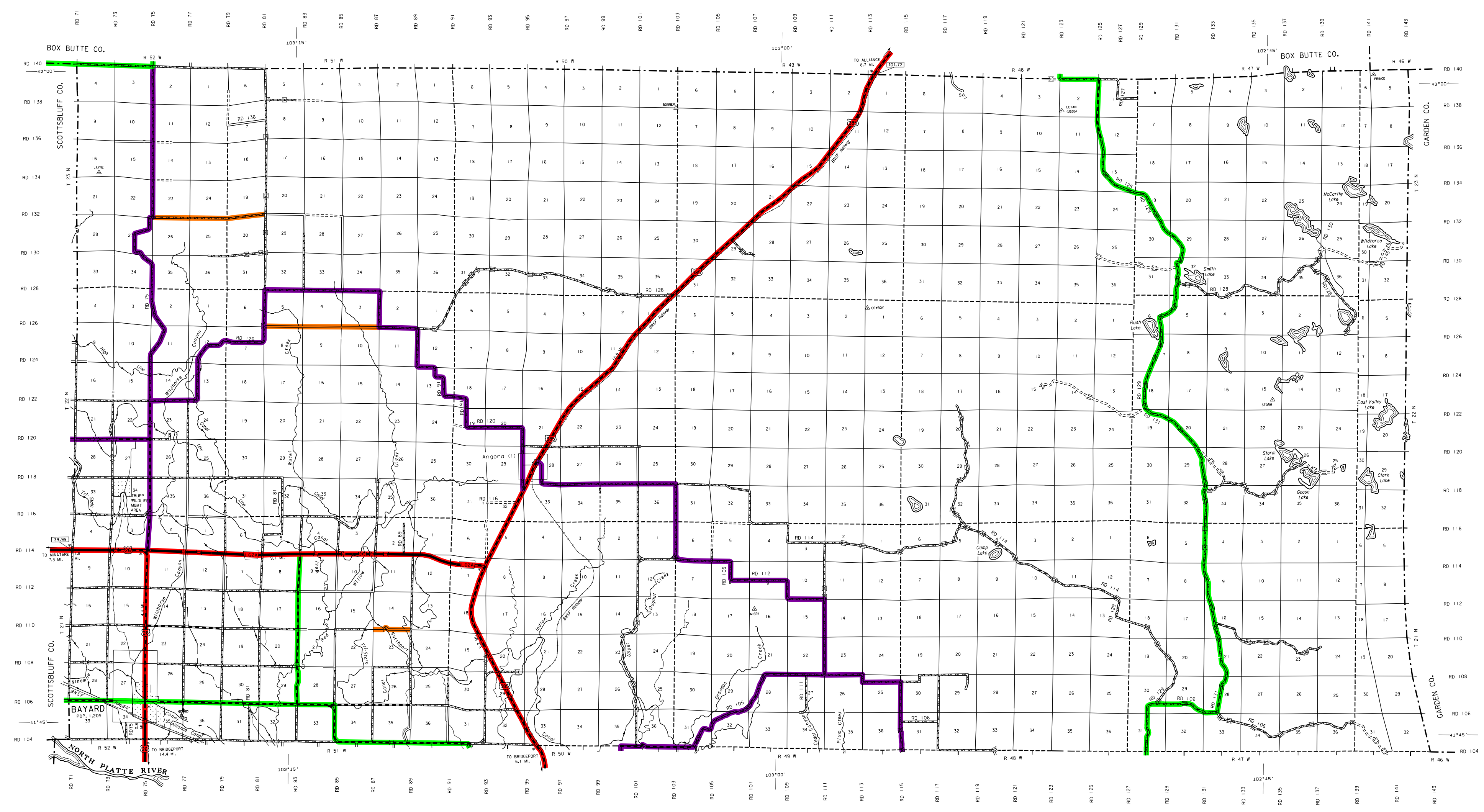
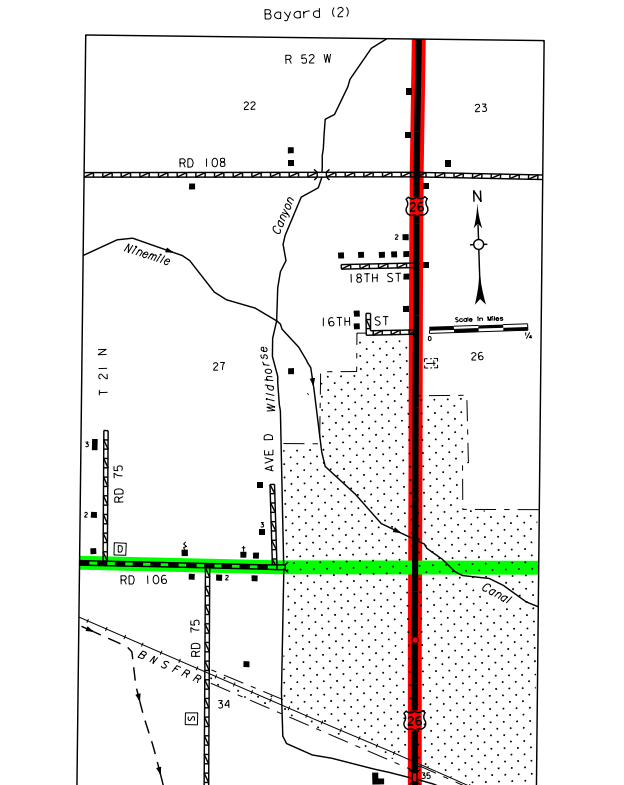
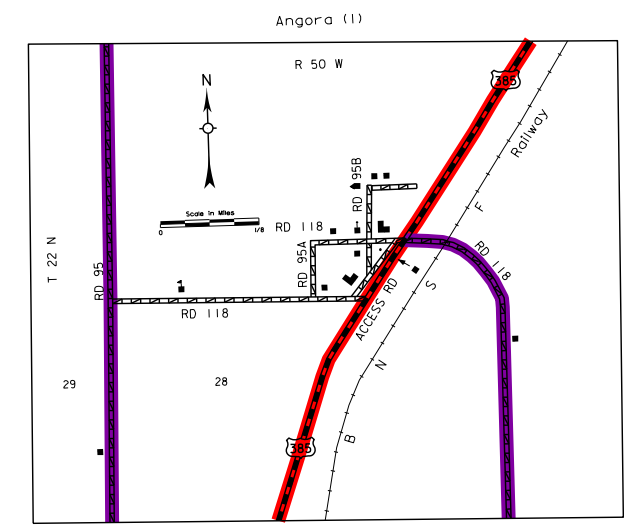
- | | | | |
|--|-------|--|-------|
| Primitive Road | | Filling Station | |
| Unimproved Road | | Grain Elevator | |
| Gravel or Crushed Rock | | Aggregate Pit | |
| Asphalt (With/Without Surface) | | Agricultural Experimental Station | |
| Multiple Lane (Unimproved Highway) | | Public Use Area | |
| Asphalt (With/Without Surface) | | Some Agricultural Grants (When Available) | |
| Concrete/Brick Surface | | Recreation Facilities | |
| Multiple Lane (Unimproved Highway) | | Some Agricultural Grants (When Available) | |
| Concrete/Brick Surface | | Rest Area | |
| Divided Highway | | Ranger Station | |
| Interstate Highway with Full Control of Access | | Fish Hatchery | |
| State Roads and Streets | | Community Hall | |
| 911 Numbered Roads | | Interstate-Numbered Highway | |
| Interstate-Numbered Highway | | US-Numbered Highway | |
| US-Numbered Highway | | Tourist Court or Motel | |
| State-Numbered Highway | | Monument-Seat | |
| State-Numbered Highway Spur | | Museum | |
| State-Numbered Highway Line | | Firestation | |
| Highway Reference Post Number | | Courthouse | |
| Interstate Exit Number | | Post Office | |
| Wide Stream | | Highway Maintenance Yard | |
| Narrow Stream | | Bump Area | |
| Irrigation Canal | | Seepage (Ditches/Pipes) | |
| Reservoir, Pond or Lake | | Water Supply Stand Pipe | |
| Reservoir with Dam | | Radio or TV Station | |
| Highway Bridge-Any Type | | Weight Station or Port of Entry | |
| Small Bridge-Closely Spaced | | Commercial or Municipal Airport | |
| Large Bridge-Well Spaced | | Airport with Paved Runways | |
| General Bridge | | State Boundary | |
| County Boundary | | County Boundary | |
| Township Line | | Township Line | |
| Section Line | | Section Line | |
| Corporate Limit Lines | | Corporate Limit Lines | |
| Parks and Other Reservations | | Parks and Other Reservations | |
| Boundary Limits of Area Shown in Enclosure | | Boundary Limits of Area Shown in Enclosure | |
| State Capital | | State Capital | |
| County Seat | | County Seat | |
| Other Cities and Villages | | Other Cities and Villages | |
| Incorporated City or Village | | Incorporated City or Village | |
| Triangulation Station | | Triangulation Station | |
| Points Between Which Distances Are Measured Indicated Thus | | Points Between Which Distances Are Measured Indicated Thus | |
| Latitude and Longitude | | Latitude and Longitude | |

LEGEND

STATE FUNCTIONAL CLASSIFICATION

| | | |
|----------------------------------|-------|--|
| INTERSTATE | | |
| EXPRESSWAY | | |
| MAJOR ARTERIAL | | |
| OTHER ARTERIAL | | |
| COLLECTOR | | |
| REMOTE RESIDENTIAL (Rural Only) | | |
| MINIMUM MAINTENANCE (Rural Only) | | |
| SCENIC RECREATION (Rural Only) | | |
| URBANIZED BOUNDARY | | |

All Roads Not Otherwise Indicated Are Classified As Local



POPULATION AS OF 2010 CENSUS
STATE HIGHWAYS CORRECTED TO 2015
DIGITAL AERIAL PHOTOGRAPHY (DAPP) TAKEN 2012

This map is to be used for information only and is not intended to show ownership or to be definitive on which roads are public under Nebraska law. The Nebraska Department of Roads makes no warranties, guarantees or representations for the accuracy of this information and assumes no liability for errors or omissions. Any inconsistencies should be reported to NDOR.