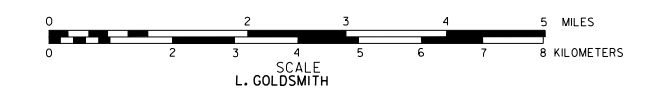
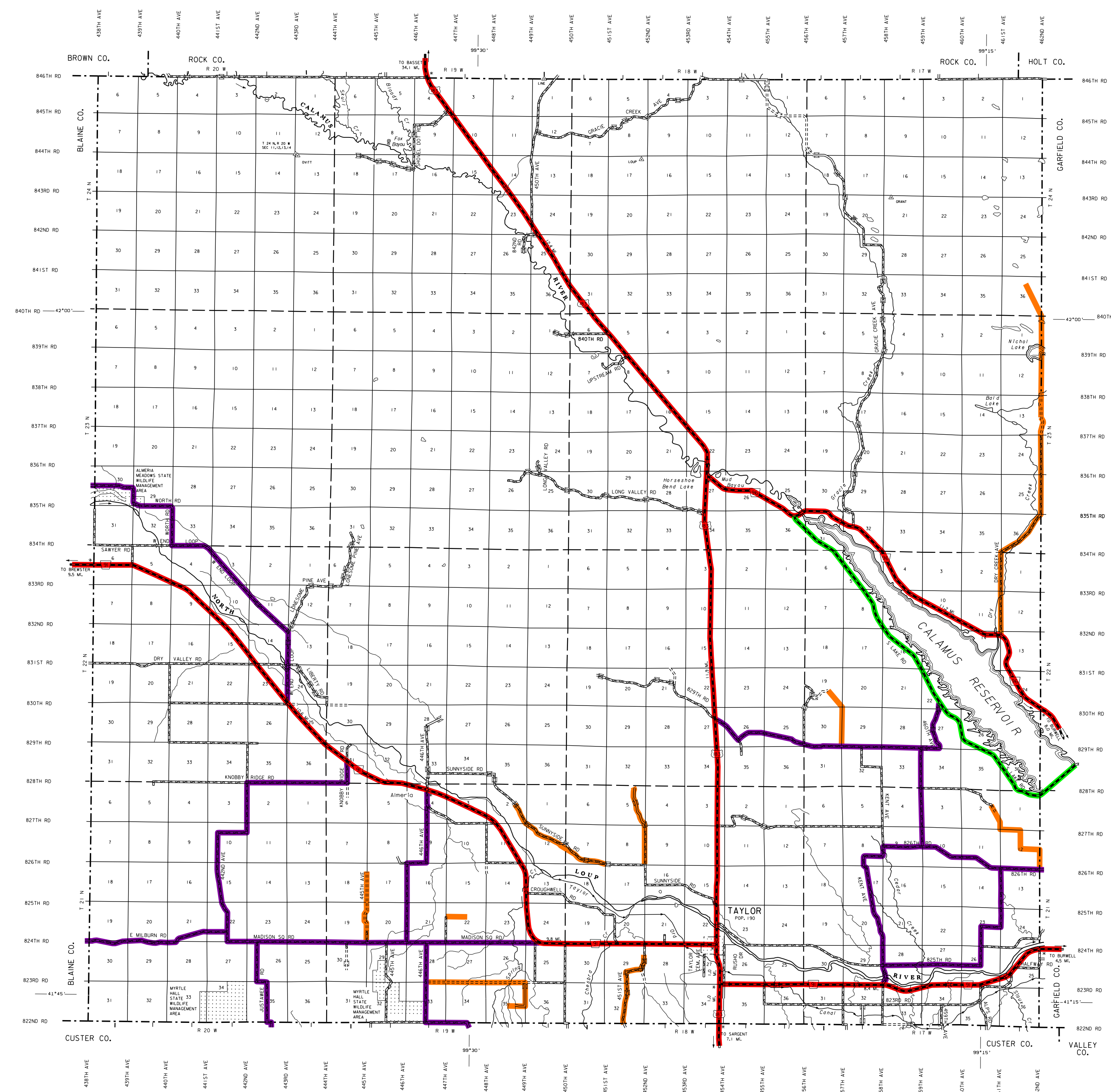


# GENERAL HIGHWAY MAP LOUP COUNTY NEBRASKA

PREPARED BY THE  
DEPARTMENT OF ROADS  
GIS/MAPPING SECTION  
IN COOPERATION WITH THE  
U.S. DEPARTMENT OF TRANSPORTATION  
FEDERAL HIGHWAY ADMINISTRATION  
1998



REVISION HISTORY		
NAME	DATE	REVISION
L. GOLDSMITH	JAN. 2007	911 SYSTEM
L. GOLDSMITH	SEPT. 2013	911 SYSTEM



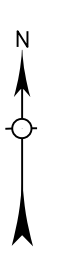
### LEGEND

- Primitive Road
- Unimproved Road
- Gravel or Crushed Rock
- Asphalt/Bituminous Surface
- Multiple Lane Undivided Highway
- Asphalt/Bituminous Surface
- Concrete/Gravel Surface
- Multiple Lane Undivided Highway
- Concrete/Gravel Surface
- Divided Highway
- Interstate Highway with Full Control of Access
- Side Roads and Streets
- State-Numbered Highway
- Interstate-Numbered Highway
- US-Numbered Highway
- State-Numbered Highway Spur
- State-Numbered Highway Link
- Highway Reference Post Number
- Interstate Exit Number
- Wide Stream
- Narrow Stream
- Irrigation Ditch
- Reservoir, Pond or Lake
- Highway Bridge Any Type
- Small Bridge Classy Spaced
- Wheeler Spaced
- General Bridge
- Truss Bridge
- Feeder Bridge
- Railroad Overpass
- Railroad Underpass
- Swelling
- Box of Dwellings
- Cemetery
- Church or Other Religious Institution
- Church with Cemetery Adjacent
- Business
- Industrial Plant
- Filling Station
- Grain Elevator
- Aggregate Pit
- Agricultural Experimental Station
- Educational Institutions
- Public Use Area
- Recreational Facilities
- Rest Area
- Ranger Station
- Fire Hatchery
- Community Hall
- Correctional Institution
- Tourist Court or Motel
- Monument-Small
- Museum
- Fire Station
- Courthouse
- Armory
- Post Office
- Highway Maintenance Yard
- Dump Area
- Sewage Disposal Plant
- Water Supply Stone Pipe
- Radio or TV Station
- Weight Station or Port of Entry
- Commercial or Municipal Airport
- Airport with Paved Runways
- State Boundary
- County Boundary
- Section Line
- Corporate Limit Lines
- Parks and Other Reservations
- Boundary Limits of Area Shown in Engineering's Use Reservations
- State Capital
- County Seat
- Other Cities and Villages
- Cattle Guard
- Incorporated City or Village
- Triangulation Station
- Points Between Which Distances Are Measured Indicated Thus
- Latitude and Longitude

**LEGEND**  
**STATE FUNCTIONAL CLASSIFICATION**

- INTERSTATE
- EXPRESSWAY
- MAJOR ARTERIAL
- OTHER ARTERIAL
- COLLECTOR
- REMOTE RESIDENTIAL (Rural Only)
- MINIMUM MAINTENANCE (Rural Only)
- SCENIC RECREATION (Rural Only)
- URBANIZED BOUNDARY

All Roads Not Otherwise Indicated Are Classified As Local



This map is to be used for information only and is not intended to show benefits of or to be definitive on which roads are public roads. Nebraska Law, the Nebraska Department of Roads makes no warranties, guarantees or representations for the accuracy of this information and assumes no liability for errors or omissions. Any inaccuracies should be reported to NDOT.

POPULATION AS OF 2010 CENSUS  
STATE HIGHWAYS CORRECTED TO 1999  
AERIAL PHOTOGRAPHY TAKEN IN 1966

LAMBERT CONFORMAL CONIC PROJECTION  
1983 NORTH AMERICAN DATUM  
NEBRASKA COORDINATE SYSTEM

