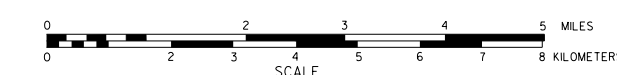


GENERAL HIGHWAY MAP KEARNEY COUNTY NEBRASKA

PREPARED BY THE
DEPARTMENT OF ROADS
GIS/MAPPING SECTION
IN COOPERATION WITH THE
U.S. DEPARTMENT OF TRANSPORTATION
FEDERAL HIGHWAY ADMINISTRATION



INVENTORY DATE:
2006

NAME	DATE	REVISION	REVISION
L. GOLDSMITH	DEC. 2000	CO. RD. TYPE CHANGE	
L. GOLDSMITH	NOV. 2000	WIT. SYSTEM	
L. BRAUN	JUN. 2001	CO. RD. TYPE CHANGE	
CLAREN WILLIAMS	DECEMBER 2003	PT. KEARNEY - SPELLING CORRECTIONS	
CLAREN WILLIAMS	APRIL 2007	HWY. REFERENCE POSTS AT BRIDGES	
L. BRAUN	NOV. 2004	CULTURE CHANGES AS PER HWY. SIG. PT.	
L. BRUNETTE	FEB. 2006	CO. HWY. CO. HWY. CO.	
L. NIELSON	FEB. 2006	COUNTY	
L. GOLDSMITH	FEB. 2006	WIT. SYSTEM	
	OCT. 2012	MINDEN C.L. CO. SIG.	
	DEC. 2014	HWY. TYPE CHANGE	

LEGEND

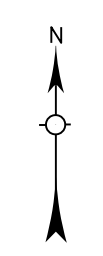
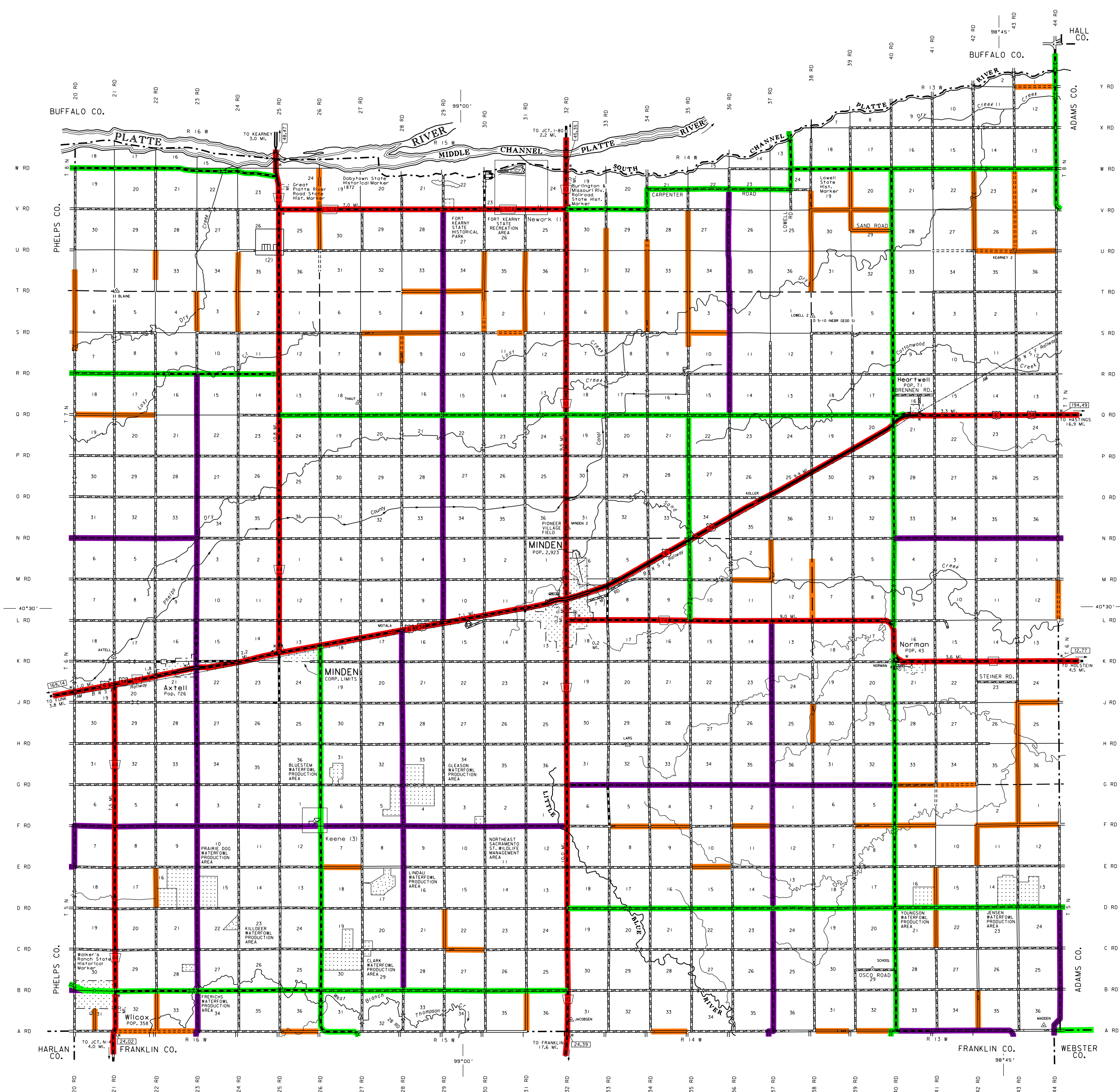
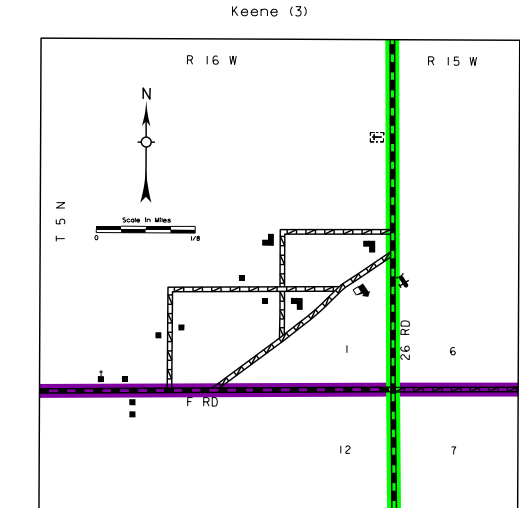
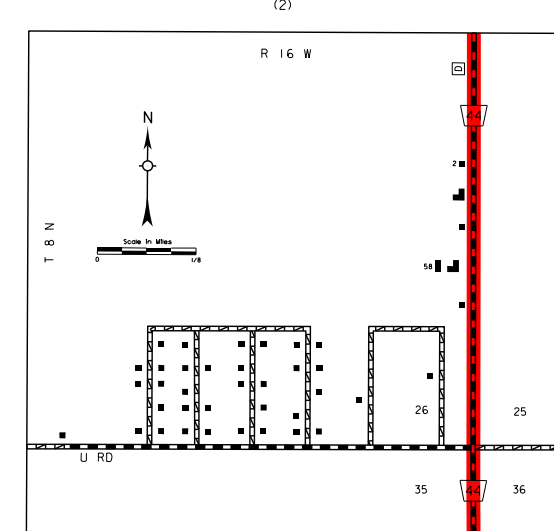
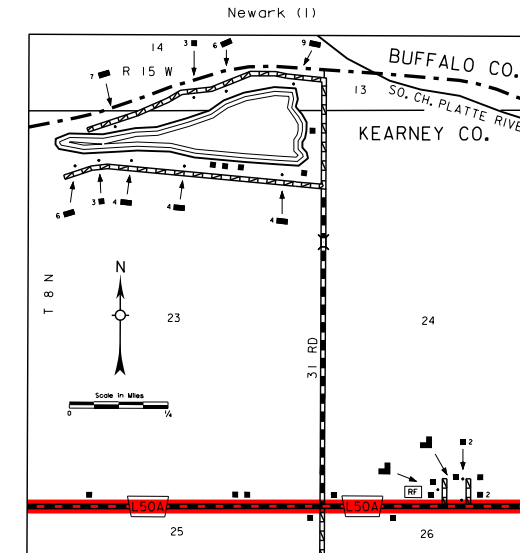
- Primitive Road
- Unimproved Road
- Gravel or Graded Road
- Asphalt/Bituminous Surface
- Multiple Lane Undivided Highway
- Asphalt/Bituminous Surface
- Concrete/Brick Surface
- Multiple Lane Divided Highway
- Concrete/Brick Surface
- Divided Highway
- Interstate Highway with Full Control of Access
- State-Numbered Highway
- State-Numbered Highway
- US-Numbered Highway
- State-Numbered Highway
- State-Numbered Highway Spur
- State-Numbered Highway Link
- Highway Reference Post Number
- Interstate Exit Number
- Wide Stream
- Narrow Stream
- Irrigation Ditch
- Reservoir, Pond or Lake
- Reservoir With Dam
- Highway Bridge-Any Type
- Small Bridge-Closely Spaced
- General Bridge
- Arch Bridge
- Truss Bridge
- Pedestrian Underpass
- Pedestrian Overpass
- Railroad Overpass
- Railroad Underpass
- Road with Road on Top
- Cattle Guard
- Dwelling
- Row of Dwellings
- Cemetery
- Church or Other Religious Institution
- Church with Cemetery Adjacent
- Hospital
- Business
- Industrial Plant
- Filling Station
- Grain Elevator
- Agrigate
- Agricultural Experimental Station
- Educational Institutions
- Public Use Area
- Recreational Facilities
- Rest Area
- Rest Stop
- Fish Hatchery
- Community Hall
- Correctional Institution
- Tourist Court or Motel
- Monument-Small
- Museum
- Firestation
- Courthouse
- Armory
- Post Office
- Highway Maintenance Road
- Bump Area
- Sewage Disposal Plant
- Water Supply Stand Pipe
- Road or Tr. Station
- Weight Station or Port of Entry
- State Boundary
- County Boundary
- Township Line
- Section Line
- Corporate Limit Lines
- Parks and Other Reservations
- Boundary Lines of Area Shown in Enlargements
- State Capital
- County Seat
- Other Cities and Villages
- Incorporated City or Village
- Triangulation Station
- Points Between which Distances are Measured Indicated Thus
- Latitude and Longitude

LEGEND

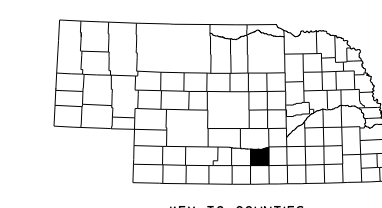
STATE FUNCTIONAL CLASSIFICATION

- INTERSTATE
- EXPRESSWAY
- MAJOR ARTERIAL
- OTHER ARTERIAL
- COLLECTOR
- REMOTE RESIDENTIAL (Rural Only)
- MINIMUM MAINTENANCE (Rural Only)
- SCENIC RECREATION (Rural Only)
- URBANIZED BOUNDARY

All Roads Not Otherwise Indicated Are Classified As Local



LAMBERT CONFORMAL CONIC PROJECTION
1983 NORTH AMERICAN DATUM
NEBRASKA COORDINATE SYSTEM



POPULATION AS OF 2010 CENSUS
STATE HIGHWAYS CORRECTED TO 2014
DIGITAL AERIAL PHOTOGRAPHY (DOOD)

This map is to be used for information only and is not intended to show ownership or to be definitive on which roads are public. Under Nebraska Law, The Nebraska Department of Roads moves no real property, and assumes no liability for errors or omissions. This information and any other information for the accuracy of this information should be reported to NDOR.