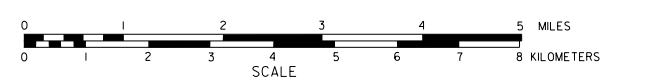


GENERAL HIGHWAY MAP JEFFERSON COUNTY NEBRASKA

PREPARED BY THE
DEPARTMENT OF ROADS
GIS/MAPPING SECTION
IN COOPERATION WITH THE
U.S. DEPARTMENT OF TRANSPORTATION
FEDERAL HIGHWAY ADMINISTRATION



INVENTORY DATE:
2005

REVISION HISTORY			
NAME	DATE	REVISION	
W. VANDER	NOV. 2004	HIGHWAY SUPERSEDEMENT	
C. VANDER	MAY 2005	COUNTY	
L. COLLINS	MAY 2008	VIET VESTER	
	JUNE 2011	COUNTY	

LEGEND

- | | | |
|--|--|---|
| Primitive Road | Gravel | Filling Station |
| Improved Road | Gravel or Crushed Rock | Grain Elevator |
| Asphalt Bituminous Surface | Asphalt Bituminous Surface | Agricultural Experimental Station |
| Concrete Surface | Concrete Surface | Educational Institutions |
| Multiple Lane Undivided Highway | Multiple Lane Undivided Highway | Public Use Areas |
| Concrete Surface | Concrete Surface | Recreation Facilities |
| Divided Highway | Divided Highway | Rest Area |
| Interstate Highway with Full Control of Access | Interstate Highway with Full Control of Access | Ranger Station |
| State-Numbered Highway | State-Numbered Highway | Flax Hatchery |
| State-Numbered Highway Spur | State-Numbered Highway Spur | Community Jail |
| Highway Reference Post Number | Highway Reference Post Number | Correctional Institution |
| Interstate Exit Number | Interstate Exit Number | Tourist Court or Motel |
| Side Road and Street | Side Road and Street | Monument-Small |
| Narrow Stream | Narrow Stream | Firestation |
| Irrigation Ditch | Irrigation Ditch | Courthouse |
| Reservoir, Pond or Lake | Reservoir, Pond or Lake | Post Office |
| Highway Bridge Any Type | Highway Bridge Any Type | Highway Maintenance Yard |
| Small Bridge Closely Spaced | Small Bridge Closely Spaced | Dump Area |
| General Bridge Widely Spaced | General Bridge Widely Spaced | Sewage Disposal Plant |
| Arch Bridge | Arch Bridge | Water Supply Stand Pipe |
| Truss Bridge | Truss Bridge | Radio or TV Station |
| Pedestrian Underpass | Pedestrian Underpass | Weight Station or Port of Entry |
| Railroad Overpass | Railroad Overpass | Commercial or Municipal Airport |
| Railroad Underpass | Railroad Underpass | Airport with Paved Runways |
| Dam with Road on Top | Dam with Road on Top | State Boundary |
| Cattle Guard | Cattle Guard | County Boundary |
| Dwelling | Dwelling | Township Line |
| Row of Dwellings | Row of Dwellings | Section Line |
| Cemetery | Cemetery | Corporate Limit Lines |
| Church or Other Religious Institution | Church or Other Religious Institution | Parks and Other Reservations |
| Church with Cemetery Adjacent | Church with Cemetery Adjacent | Boundary Limits of Area Shown by Enumeration, see legend for symbol |
| Hospital | Hospital | State Capital |
| Business | Business | County Seat |
| Industrial Plant | Industrial Plant | Other Cities and Villages |
| | | Incorporated City or Village |
| | | Triangulation Station |
| | | Points Between Which Distances Are Measured Indicated Thus |
| | | Latitude and Longitude |

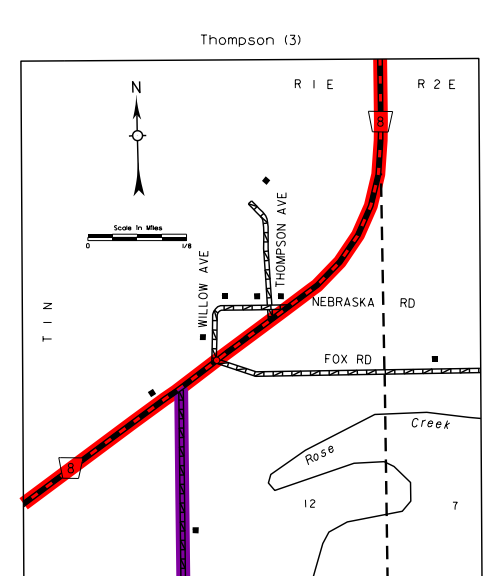
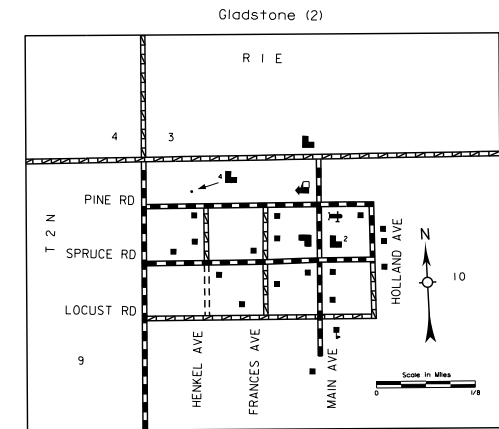
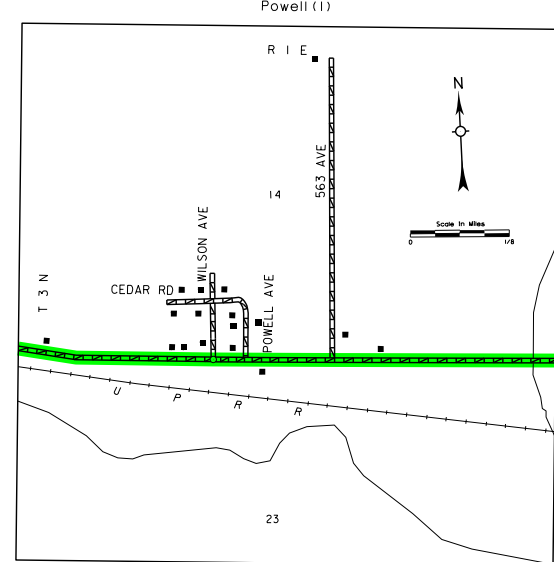
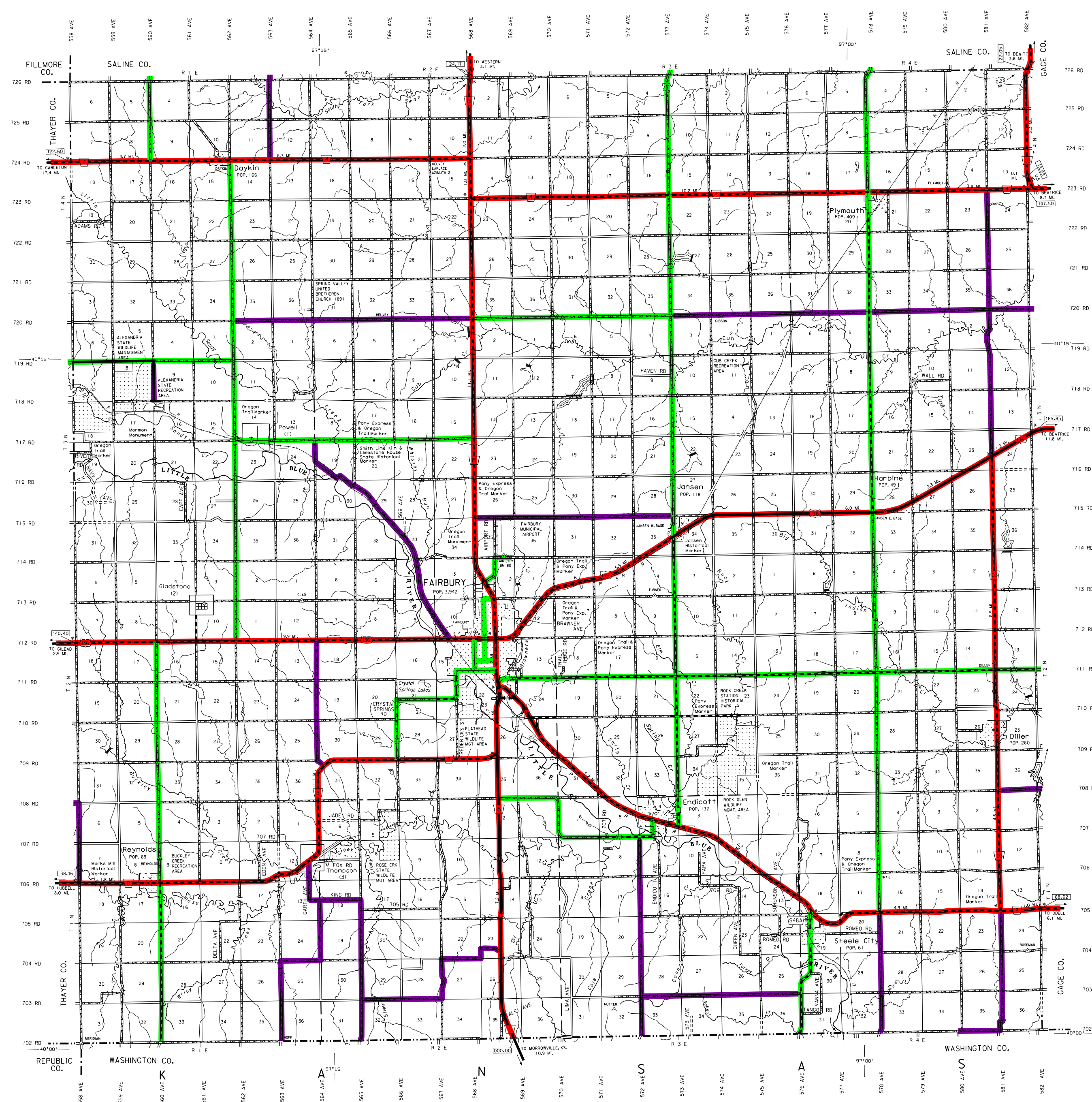
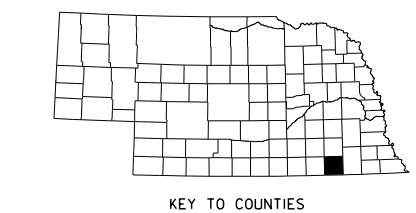
LEGEND

STATE FUNCTIONAL CLASSIFICATION

- INTERSTATE
- EXPRESSWAY
- MAJOR ARTERIAL
- OTHER ARTERIAL
- COLLECTOR
- REMOTE RESIDENTIAL (Rural Only)
- MINIMUM MAINTENANCE (Rural Only)
- SCENIC RECREATION (Rural Only)
- URBANIZED BOUNDARY

All Roads Not Otherwise Indicated Are Classified As Local

LAMBERT CONFORMAL CONIC PROJECTION
1983 NORTH AMERICAN DATUM
NEBRASKA COORDINATE SYSTEM



POPULATION AS OF 2010 CENSUS
STATE BOUNDARIES CORRECTED TO 2005
DIGITAL AERIAL PHOTOGRAPHY (DOADO)

This map is to be used for information only and is not intended to show ownership or to be definitive on which roads are public under Nebraska Law. The Nebraska Department of Roads makes no warranty, guarantee or representation for the accuracy of this information and assumes no liability for errors or omissions. Any inconsistencies should be reported to NDOR.