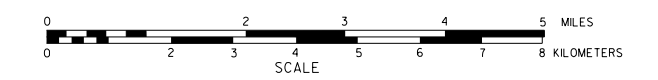


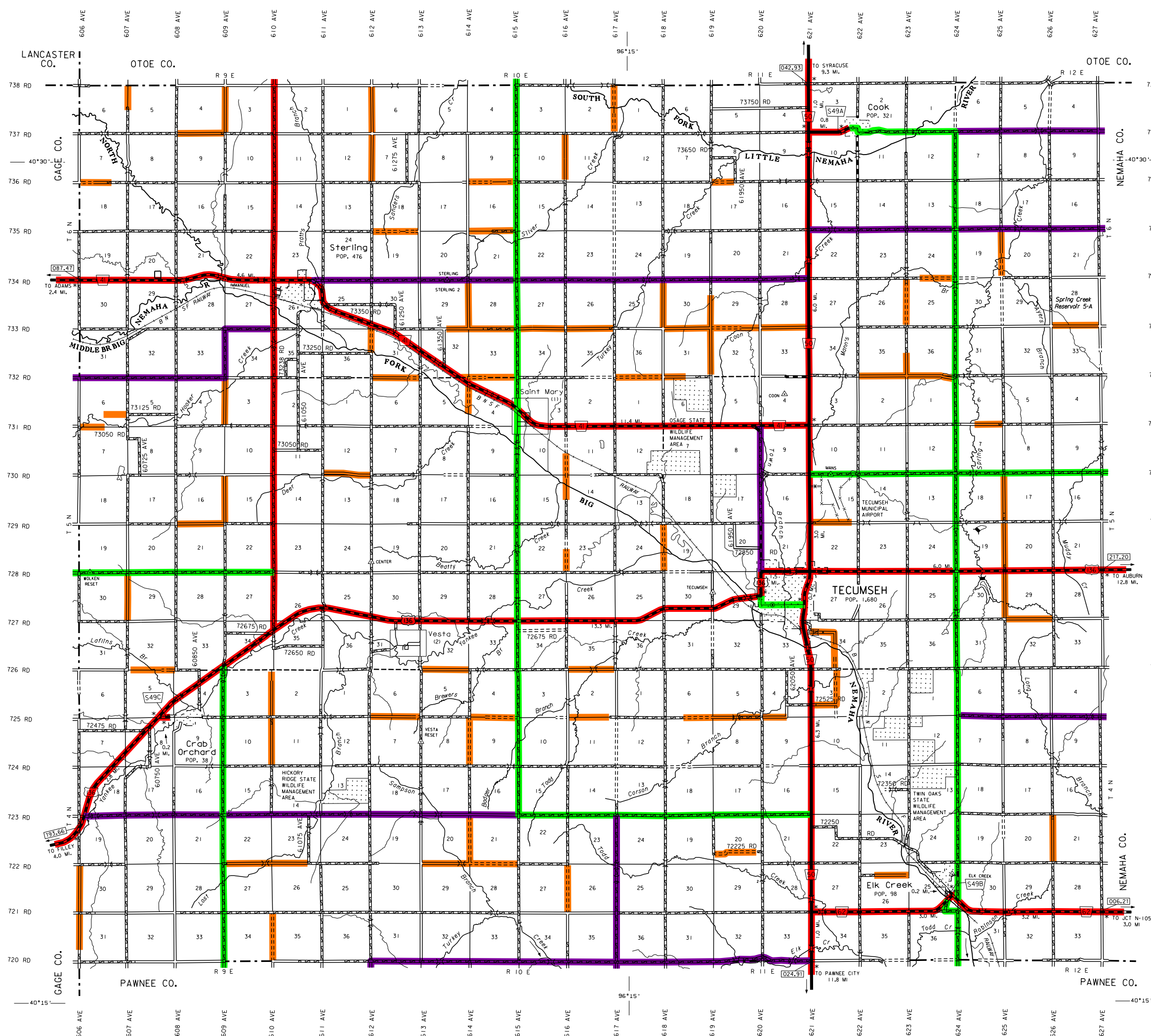
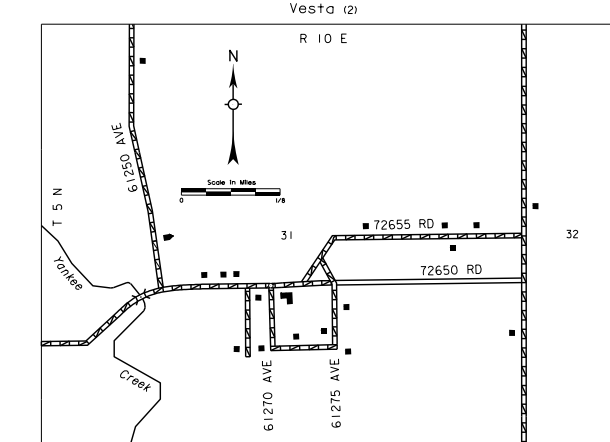
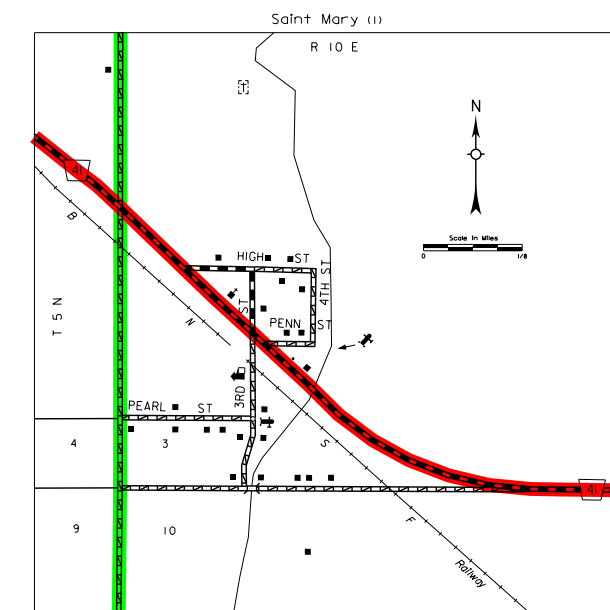
# GENERAL HIGHWAY MAP JOHNSON COUNTY NEBRASKA

PREPARED BY THE  
DEPARTMENT OF ROADS  
GIS/MAPPING SECTION  
IN COOPERATION WITH THE  
U.S. DEPARTMENT OF TRANSPORTATION  
FEDERAL HIGHWAY ADMINISTRATION



INVENTORY DATE:  
**2014**

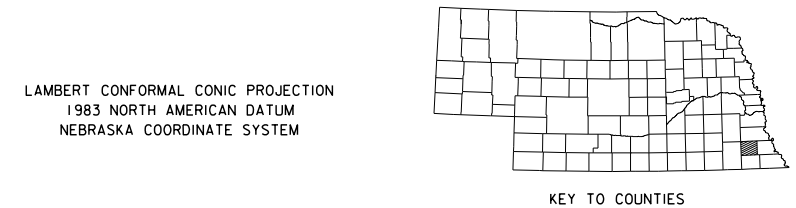
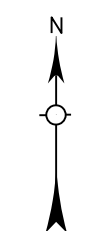
REVISION HISTORY	
DATE	REVISION
MAY 2014	COUNTY SPLIT
JUNE 2008	WIT SYSTEM



LEGEND	
Primitive Road	.....
Unimproved Road	.....
Gravel or Crushed Rock	.....
Asphalt/Bituminous Surface	.....
Multiple Lane Undivided Highway	.....
Asphalt/Bit without Surface	.....
Concrete/Asic Surface	.....
Multiple Lane Divided Highway	.....
Concrete/Asic Surface	.....
Interstate Highway with Full Control of Access	.....
State Roads and Streets	.....
911 NAMED/Numbered Roads	.....
Interstate/Numbered Highway	.....
US-Numbered Highway	.....
State-Numbered Highway Spur	.....
State-Numbered Highway Link	.....
Highway Reference Post Number	.....
Interstate Exit Number	.....
Wide Stream	.....
Narrow Stream	.....
Irrigation Ditch	.....
Reservoir, Pond or Lake	.....
Reservoir With Dam	.....
Highway Bridge-Any Type	.....
Arch Bridge	.....
Truss Bridge	.....
Pedestrian Underpass	.....
Pedestrian Overpass	.....
Railroad Overpass	.....
Railroad Underpass	.....
Railroad	.....
Dam with Road on Top	.....
Center Guide	.....
Row of Dwellings	.....
Cemetery	.....
Church or Other Religious Institution	.....
Church with Cemetery Adjacent	.....
Health	.....
Business	.....
Industrial Plant	.....
Filling Station	.....
Grain Elevator	.....
Aggregate Pit	.....
Agricultural Experimental Station	.....
Educational Institutions	.....
Public Use Area	.....
Recreational Facilities	.....
Rest Area	.....
Ranger Station	.....
Flax Hatchery	.....
Community Hall	.....
Correctional Institution	.....
Tourist Court or Motel	.....
Monument-Shed	.....
Museum	.....
Firestation	.....
Courthouse	.....
Armory	.....
Post Office	.....
Highway Maintenance Yard	.....
Dump Area	.....
Waste Disposal Plant	.....
Water Supply Stand Pipe	.....
Radios or TV Station	.....
Relight Station or Port of Entry	.....
Commercial or Municipal Airport	.....
Airport with Paved Runways	.....
State Boundary	.....
County Boundary	.....
Township Line	.....
Section Line	.....
Corporate Limit Lines	.....
Parks and Other Reservations	.....
Boundary Limits of Area Shown in Other Editions, See Legend for Label	.....
State Capitol	.....
County Seat	.....
Other Cities and Villages	.....
Incorporated City or Village	.....
Trinquetration Station	.....
Points Between Which Distances Are Measured Indicated Thus	.....
Latitude and Longitude	.....

LEGEND	
STATE FUNCTIONAL CLASSIFICATION	
INTERSTATE	.....
EXPRESSWAY	.....
MAJOR ARTERIAL	.....
OTHER ARTERIAL	.....
COLLECTOR	.....
REMOTE RESIDENTIAL (Rural Only)	.....
MINIMUM MAINTENANCE (Rural Only)	.....
SCENIC RECREATION (Rural Only)	.....
URBANIZED BOUNDARY	.....

All Roads Not Otherwise Indicated Are Classified As Local



This map is to be used for information only and is not intended to show ownership or to be definitive on which roads are public or private. The Nebraska Department of Roads makes no warranties, guarantees or representations for the accuracy of this information and assumes no liability for errors or omissions. Any inconsistencies should be reported to NDOR.

STATE HIGHWAYS CORRECTED TO 2014  
DIGITAL AERIAL PHOTOGRAPHY (DOADO) TAKEN IN 2014

www.transportation.nebraska.gov