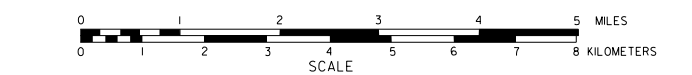


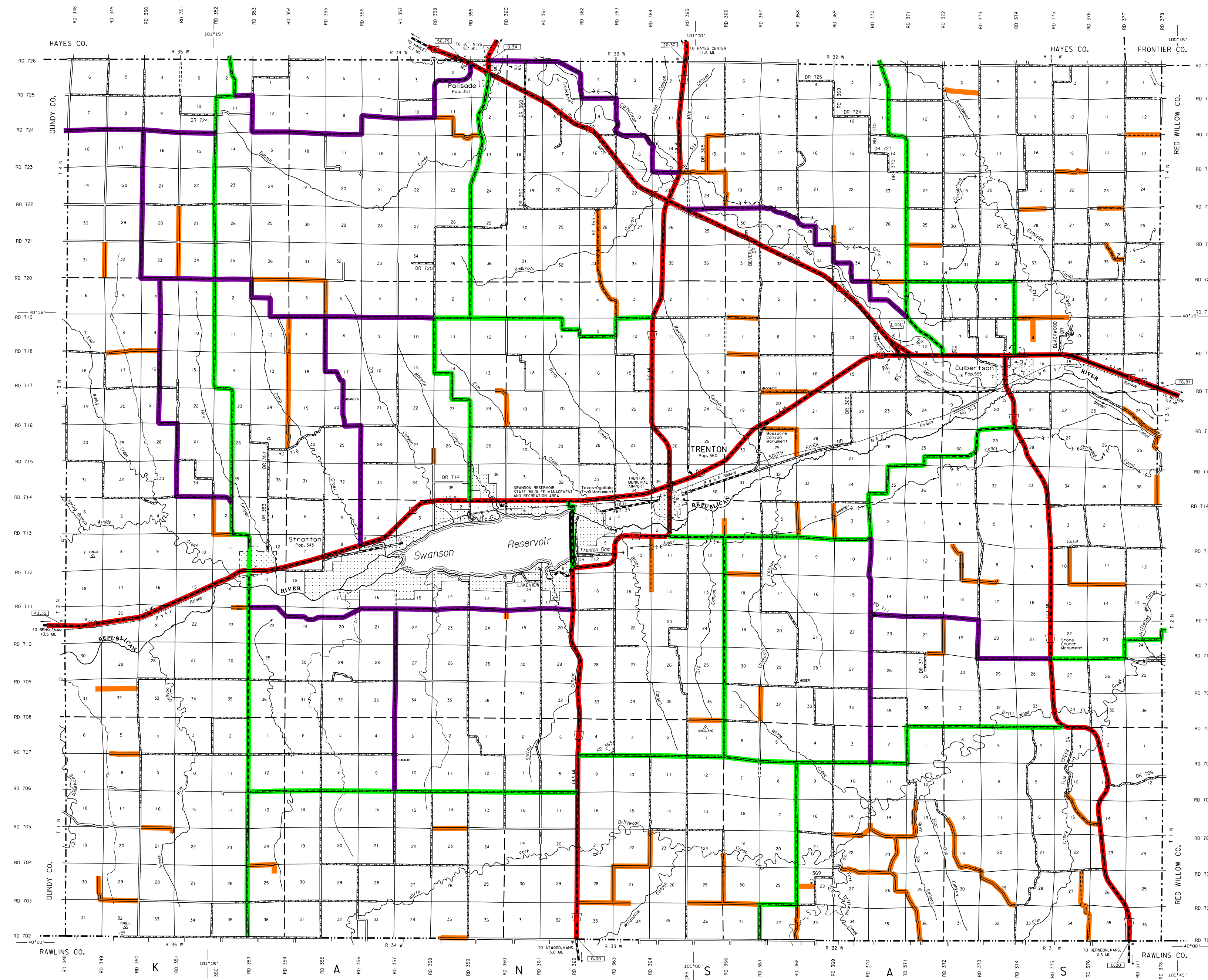
# GENERAL HIGHWAY MAP HITCHCOCK COUNTY NEBRASKA

PREPARED BY THE  
**DEPARTMENT OF ROADS**  
GIS/MAPPING SECTION  
IN COOPERATION WITH THE  
**U.S. DEPARTMENT OF TRANSPORTATION**  
FEDERAL HIGHWAY ADMINISTRATION



**INVENTORY DATE:**  
2014

REVISION HISTORY	
DATE	REVISION
AUGUST 2014	COUNTY SPLIT
DEC 2014	SHP CHANGE NO.



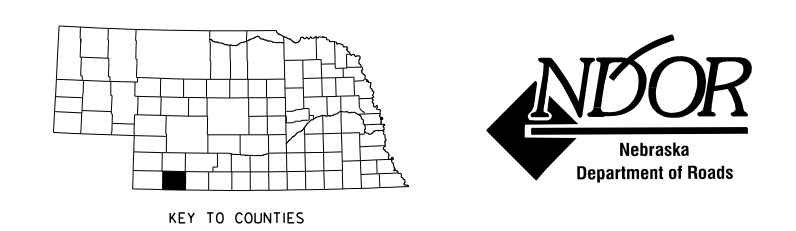
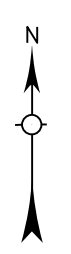
**LEGEND**

Primitive Road	Grain Elevator	Filing Station
Unimproved Road	Aggregate Pit	Correctional Institution
Gravel or Drained Road	Agricultural Experiment Station	Tourist Court or Motel
Asphalt Bituminous Surface	Educational Institutions	Monument-Shell
Multiple Lane Undivided Highway	Public Use Area	Museum
Asphalt Bituminous Surface	Recreational Facilities	Firestation
Concrete/Block Surface	Rest Area	Courthouse
Multiple Lane Undivided Highway	Range Station	Army
Concrete/Block Surface	Rest Area	Post Office
Interstate Highway with Full Control of Access	Range Station	Highway Maintenance Yard
State Numbered Highway	Range Station	Dump Area
State Numbered Highway Spur	Range Station	Sewage Disposal Plant
State Numbered Highway Link	Range Station	Water Supply Stand Pipe
Highway Reference Post Number	Range Station	Road or TV Station
Interstate Exit Number	Range Station	Range Station or Port of Entry
Wide Street	Range Station	Commercial or Municipal Airport
Narrow Street	Range Station	Airport with Paved Runways
Irrigation Ditch	Range Station	State Boundary
Reservoir, Pond or Lake	Range Station	Township Line
Reservoir, With Dam	Range Station	Section Line
Highway Bridge-Any Type	Range Station	Corporate Line Lines
Small Bridges-Closely Spaced	Range Station	Pedestrian Underpass
Structures Indicate Spacing	Range Station	Railroad Overpass
General Bridge or Structure	Range Station	Railroad Underpass
Arch Bridge	Range Station	Roadway
Truss Bridge	Range Station	Dam with Road on Top
Pedestrian Underpass	Range Station	Cattle Guard
Railroad Overpass	Range Station	Incorporated City or Village
Railroad Underpass	Range Station	Roof of Dwelling
Roadway	Range Station	Cemetery
Dam with Road on Top	Range Station	Church or Other Religious Institution
Cattle Guard	Range Station	Church with Cemetery Adjacent
Incorporated City or Village	Range Station	Hospital
Roof of Dwelling	Range Station	Business
Cemetery	Range Station	Industrial Plant
Church or Other Religious Institution	Range Station	
Church with Cemetery Adjacent	Range Station	
Hospital	Range Station	
Business	Range Station	
Industrial Plant	Range Station	

**LEGEND**  
STATE FUNCTIONAL CLASSIFICATION

INTERSTATE	EXPRESSWAY	MAJOR ARTERIAL	OTHER ARTERIAL	COLLECTOR	REMOTE RESIDENTIAL (Rural Only)	MINIMUM MAINTENANCE (Rural Only)	SCENIC RECREATION (Rural Only)	URBANIZED BOUNDARY
------------	------------	----------------	----------------	-----------	---------------------------------	----------------------------------	--------------------------------	--------------------

All Roads Not Otherwise Indicated Are Classified As Local



LAMBERT CONFORMAL CONIC PROJECTION  
1983 NORTH AMERICAN DATUM  
NEBRASKA COORDINATE SYSTEM



POPULATION AS OF 2010 CENSUS  
STATE HIGHWAYS CORRECTED TO 2014  
DIGITAL AERIAL PHOTOGRAPHY ©2000 TAKEN IN 2012

This map is to be used for information only and is not intended to show ownership or to be defective on which roads are public under Nebraska Law. The Nebraska Department of Roads makes no warranties, guarantees or representations for the accuracy of this information and disclaims liability for errors or omissions. Any inconsistencies should be reported to NDOR.

GENERAL HIGHWAY MAP

HITCHCOCK COUNTY NEBRASKA 44

www.transportation.nebraska.gov