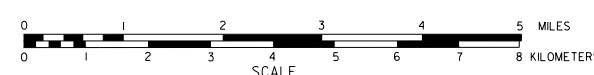


# GENERAL HIGHWAY MAP GARFIELD COUNTY NEBRASKA

PREPARED BY THE  
DEPARTMENT OF ROADS  
GIS/MAPPING SECTION  
IN COOPERATION WITH THE  
U.S. DEPARTMENT OF TRANSPORTATION  
FEDERAL HIGHWAY ADMINISTRATION



INVENTORY DATE:  
2003

NAME	DATE	REVISION
G. WILLIAMS	FEB. 2003	COUNTY
STEVEN J. LEE	NOV. 2003	CO HWY SUPERINTENDENT SIGN
CHRISTOPHER	DEC. 2003	FILE SYSTEM
DAVID WILLIAMS	APRIL 2009	Align Roads to NHTD South
ALYSON	DEC. 2010	FILE SYSTEM
CHRISTOPHER	DEC. 2014	Surf Chng. ATJ Burwell

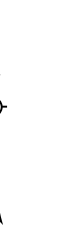
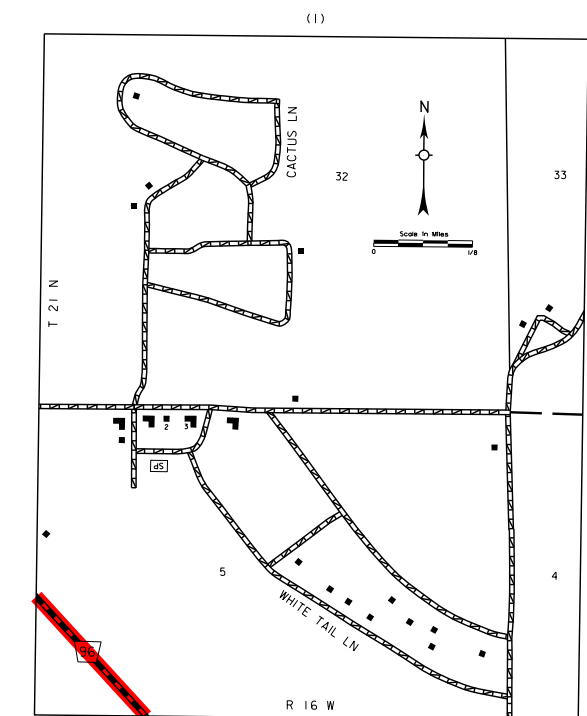
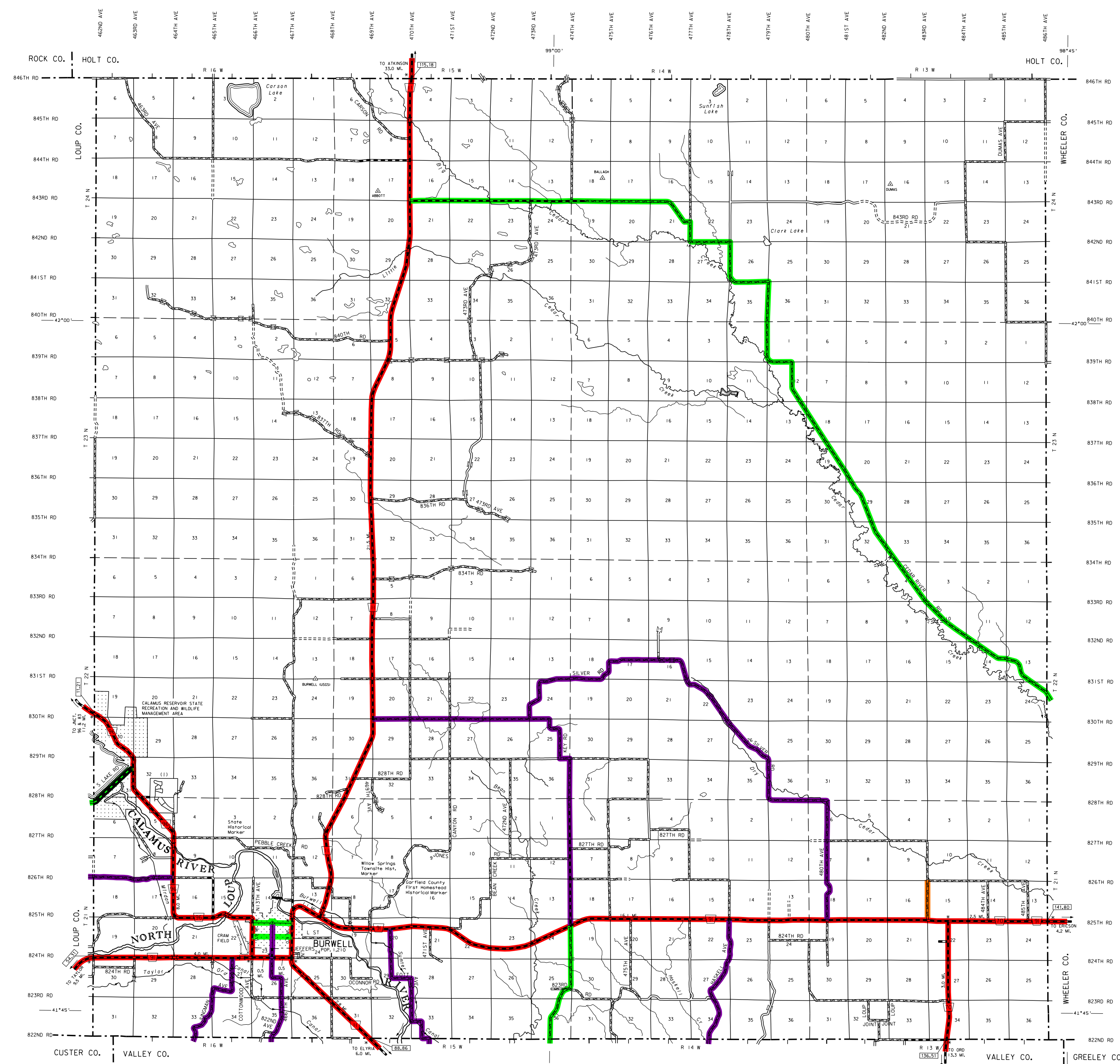
## LEGEND

- Primitive Road
- Unimproved Road
- Gravel or Crushed Rock
- Asphalt Bituminous Surface
- Multiple Lane Unimproved Highway
- Asphalt Bituminous Surface
- Concrete/Ask Surface
- Multiple Lane Unimproved Highway
- Concrete/Ask Surface
- Divided Highway
- Interstate Highway with Full Control of Access
- Side Roads and Streets
- 911 NAMED/Numbered Roads
- ADAMS ROAD
- Interstate-Numbered Highway
- IS-Numbered Highway
- State-Numbered Highway
- State-Numbered Highway Spur
- State-Numbered Highway Link
- Highway Reference Post Number
- Interstate Exit Number
- Wide Stream
- Narrow Stream
- Irrigation Canal
- Reservoir, Pond or Lake
- Reservoir with Dam
- Highway Bridge-Any Type over 20 feet
- Small Bridge-Classify Second
- General Bridge
- Arch Bridge
- Truss Bridge
- Pedestrian Underpass
- Railroad Overpass
- Railroad Underpass
- Railroad
- Dam with Road on Top
- Contra Guide
- Dwelling
- Row of Dwellings
- Cemetery
- Church or Other Religious Institution
- Church with Cemetery Adjacent
- Headright
- Business
- Industrial Plant
- Filing Station
- Green Elevator
- Aggregate Pit
- Agricultural Experimental Station
- Educational Institutions
- Public Use Area
- Recreational Facilities
- Rest Area
- Ranger Station
- Plan Hatchery
- Community Hall
- Correctional Institution
- Tourist Court or Motel
- Monument-Small
- Monument
- Firestation
- Courthouse
- Artery
- Highway Maintenance Yard
- Dump Area
- Sewage Disposal Plant
- Water Supply Stand Pipe
- Road or TV Station
- Weight Station or Port of Entry
- Commercial Municipal Airport
- Airport with Paved Runways
- State Boundary
- County Boundary
- Township Line
- Section Line
- Corporate Limit Lines
- Parks and Other Reservations
- Boundary Limits of Area Shown in Other Symbols - See Legend for Label
- State Capital
- County Seat
- Other Cities and Villages
- Incorporated City or Village
- Triangulation Station
- Points Between Which Distances Are Measured Indicated Thus
- Latitude and Longitude

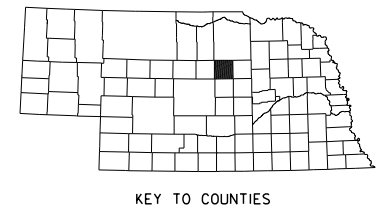
## LEGEND STATE FUNCTIONAL CLASSIFICATION

- INTERSTATE
- EXPRESSWAY
- MAJOR ARTERIAL
- OTHER ARTERIAL
- COLLECTOR
- REMOTE RESIDENTIAL (Rural Only)
- MINIMUM MAINTENANCE (Rural Only)
- SCENIC RECREATION (Rural Only)
- URBANIZED BOUNDARY

All Roads Not Otherwise Indicated Are Classified As Local  
Revised December 3, 2014



LAMBERT CONFORMAL CONIC PROJECTION  
1983 NORTH AMERICAN DATUM  
NEBRASKA COORDINATE SYSTEM



www.transportation.nebraska.gov

POPULATION AS OF 2010 CENSUS  
STATE HIGHWAYS CORRECTED TO 2014

This map is to be used for information only and is not intended to show ownership or to be definitive on any roads or public under Nebraska Law. The Nebraska Department of Roads makes no warranty, guarantee or representation for the accuracy of this information and assumes no liability for errors or omissions. Any inconsistencies should be reported to NDOR.