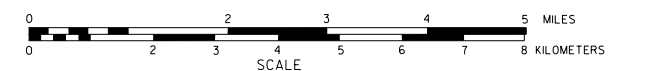


GENERAL HIGHWAY MAP GARDEN COUNTY NORTH HALF NEBRASKA

PREPARED BY THE
DEPARTMENT OF ROADS
GIS/MAPPING SECTION
IN COOPERATION WITH THE
U.S. DEPARTMENT OF TRANSPORTATION
FEDERAL HIGHWAY ADMINISTRATION
2015



DATE	REVISION	DESCRIPTION
FEBRUARY 2015	ADAMS ROAD	ADAMS ROAD
JULY 2011	GIS SYSTEM	GIS SYSTEM
OCTOBER 2013	SEC 31/26, R 42 W / T 21 N	SEC 31/26, R 42 W / T 21 N
	SEC 14/18, R 42 W / T 23 N	SEC 14/18, R 42 W / T 23 N
	SEC 31/26, R 42 W / T 23 N	SEC 31/26, R 42 W / T 23 N
	SEC 31/26, R 42 W / T 22 N	SEC 31/26, R 42 W / T 22 N

LEGEND

- Primitive Road
- Unimproved Road
- Gravel or Crushed Rock
- Asphalt/Bituminous Surface
- Multiple Lane Undivided Highway
- Concrete/Bituminous Surface
- Multiple Lane Undivided Highway
- Concrete/Bituminous Surface
- Interstate Highway with Full Control of Access
- Interstate Highway with Full Control of Access
- Side Roads and Streets
- State-Numbered Highway
- State-Numbered Highway Spur
- Highway Reference Post Number
- Interstate Exit Number
- Wide Stream
- Narrow Stream
- Irrigation Ditch
- Reservoir, Pond or Lake
- Reservoir, With Dam
- Highway Bridge-Any Type
- Small Bridge-Closely Spaced
- Truss Bridge
- Arch Bridge
- Footbridge
- Pedestrian Overpass
- Railroad Overpass
- Railroad Underpass
- Dam with Road on Top
- Cattle Guard
- Dwelling
- Row of Dwellings
- Cemetery
- Church or Other Religious Institution
- Church with Cemetery Adjacent
- Hospital
- Business
- Industry
- Filling Station
- Grain Elevator
- Aggregate Pit
- Agricultural Experiment Station
- Educational Institutions
- Public Use Area
- State Wildlife Refuge
- Recreational Facility
- Rest Area
- Ranger Station
- Fish Hatchery
- Community Hall
- Correctional Institution
- Tourist Court or Motel
- Monument-Small
- Museum
- Firestation
- Courthouse
- Post Office
- Armory
- Highway Maintenance Yard
- Dump Area
- Water Supply Stand Pipe
- Radio or TV Station
- Weight Station or Port of Entry
- Commercial or Municipal Airport
- Airport with Fenced Runways
- State Boundary
- County Boundary
- Township Line
- Section Line
- Corporate Limit Line
- Parks and Other Reservations
- Boundary Limits of Area Shown in Other Maps
- Railroad
- State Capitol
- County Seat
- Other Cities and Villages
- Incorporated City or Village
- Transportation Station
- Points Between Which Distances Are Measured Indicated Thus
- Latitude and Longitude

LEGEND

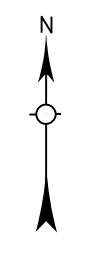
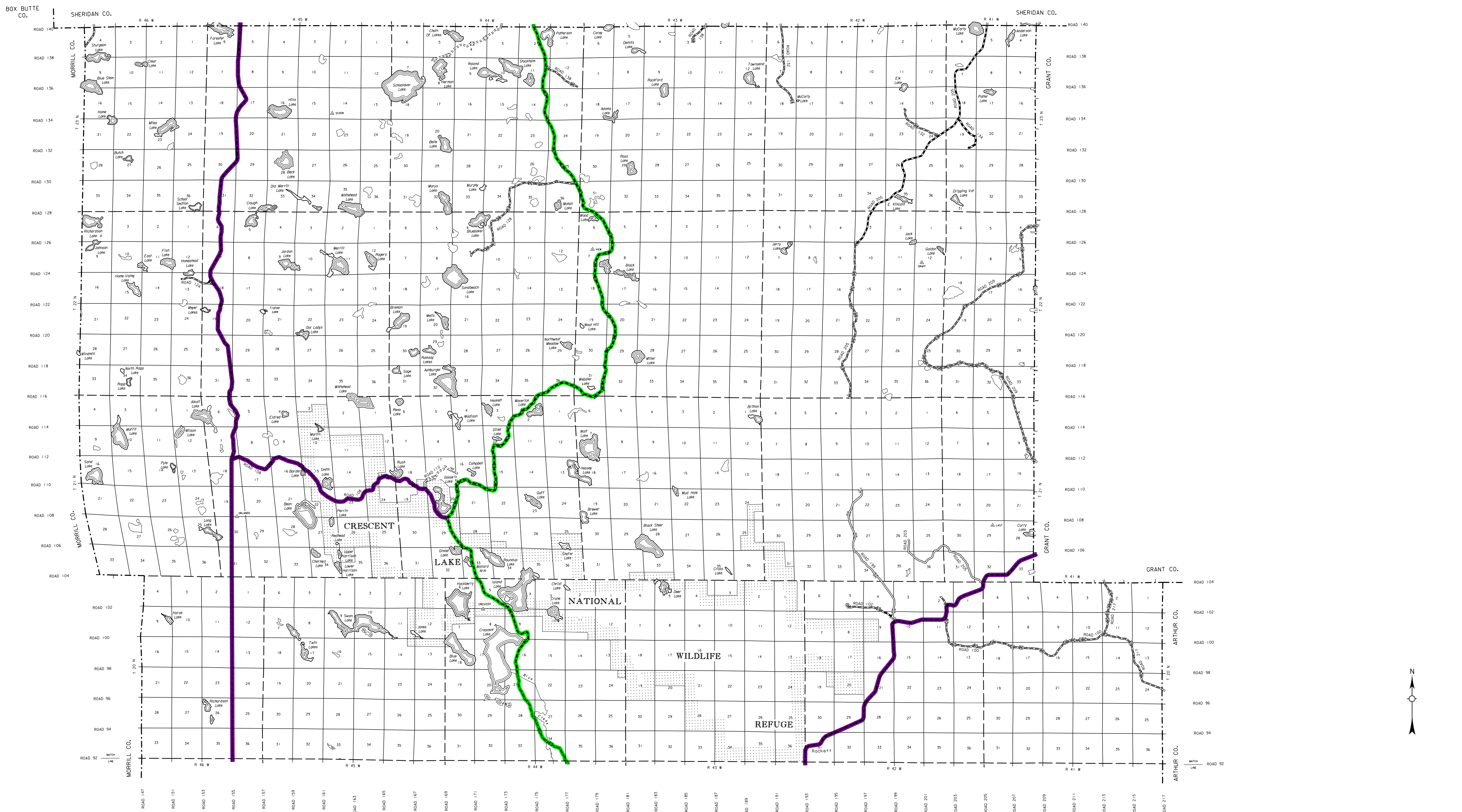
STATE FUNCTIONAL CLASSIFICATION

- INTERSTATE
- EXPRESSWAY
- MAJOR ARTERIAL
- OTHER ARTERIAL
- COLLECTOR
- REMOTE RESIDENTIAL (Rural Only)
- MINIMUM MAINTENANCE (Rural Only)
- SCENIC RECREATION (Rural Only)
- URBANIZED BOUNDARY

All Roads Not Otherwise Indicated Are Classified As Local

LAMBERT CONFORMAL CONIC PROJECTION
1983 NORTH AMERICAN DATUM
NEBRASKA COORDINATE SYSTEM

KEY TO COUNTIES



This map is to be used for information only and is not intended to show ownership or to be definitive on which roads are public under Nebraska Law. The Nebraska Department of Roads makes no warranties, guarantees or representations for the accuracy of this information and assumes no liability for errors or omissions. Any inconsistencies should be referred to NDR.