

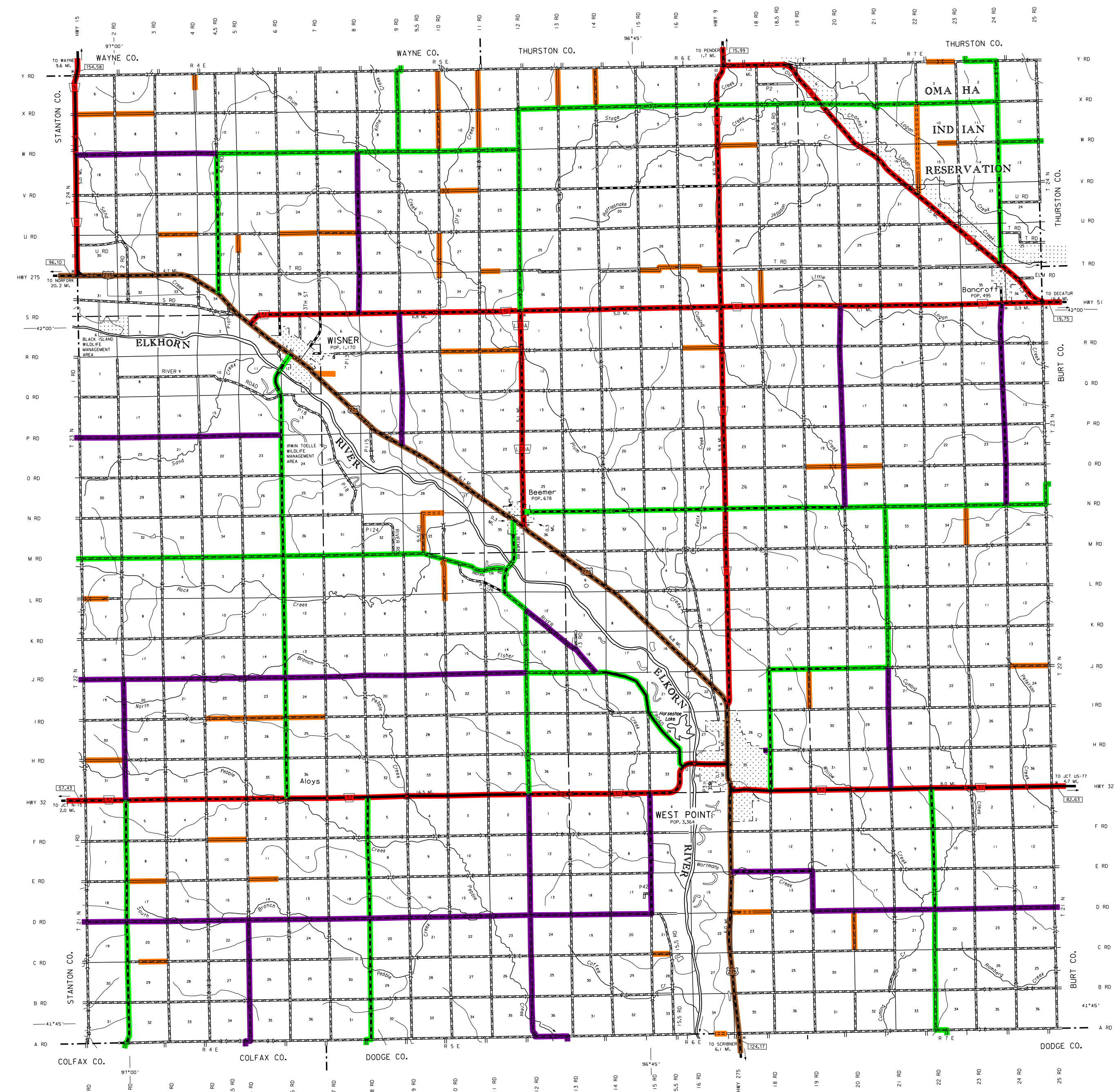
GENERAL HIGHWAY MAP CUMING COUNTY NEBRASKA

PREPARED BY THE
DEPARTMENT OF ROADS
GIS/MAPPING SECTION

IN COOPERATION WITH THE
U.S. DEPARTMENT OF TRANSPORTATION
FEDERAL HIGHWAY ADMINISTRATION
2017

SCALE 1" = 4 MILES

DATE	REVISION HISTORY	REVISION
FEB. 2017	COUNTY BOUND.	911 SYSTEM
FEB. 2008	911 SYSTEM	
JULY 2008	911 SYSTEM	



LEGEND

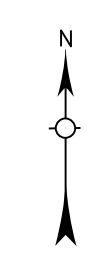
- Primitive Road
- Improved Road
- Gravel or Crushed Rock
- Asphalt/Bituminous Surface
- Multiple Lane Undivided Highway
- Asphalt/Bituminous Surface
- Concrete/Gravel Surface
- Multiple Lane Undivided Highway
- Concrete/Gravel Surface
- Divided Highway
- Interstate Highway with Full Control of Access
- State Highway with Full Control of Access
- 911 Numbered Roads
- Interstate Highway
- State-Numbered Highway
- State-Numbered Highway Spur
- State-Numbered Highway Link
- Highway Reference Post Number
- Interstate Exit Number
- Wide Stream
- Narrow Stream
- Irrigation Ditch
- Reservoir, Pond or Lake
- Reservoir with Dam
- Highway Bridge Any Type
- Small Bridge Closely Spaced
- Medium Bridge Closely Spaced
- General Bridge
- Arch Bridge
- Truss Bridge
- Pedestrian Underpass
- Pedestrian Overpass
- Railroad Overpass
- Railroad Underpass
- Railroad
- Don with Road on Top
- Carrie Guard
- Dwelling
- Row of Dwellings
- Cemetery
- Church or Other Religious Institution
- Church with Cemetery Adjacent
- Hospital
- Ballfield
- Industrial Plant
- Filling Station
- Grain Elevator
- Aggregate Pit
- Agricultural Experimental Station
- Educational Institutions
- Public Use Area
- Recreational Facilities
- Rest Area
- Ranger Station
- Fish Hatchery
- Community Hall
- Correctional Institution
- Tourist Court or Motel
- Monument-Site
- Museum
- Firestation
- Courthouse
- Armory
- Post Office
- Highway Maintenance Yard
- Dump Area
- Sewage Disposal Plant
- Water Supply Stand Pipe
- Radio or TV Station
- Weight Station or Port of Entry
- Customs or Multiple Airport
- Airport with Paved Runways
- State Boundary
- County Boundary
- Township Line
- Section Line
- Corporate Limit Lines
- Parks and Other Reservations
- Boundary Limits of Areas Shown in Other Maps
- State Capital
- County Seat
- Other Cities and Villages
- Incorporated City or Village
- Transportation Station
- Points Between Which Distances Are Measured Indicated Thus
- Latitude and Longitude

LEGEND

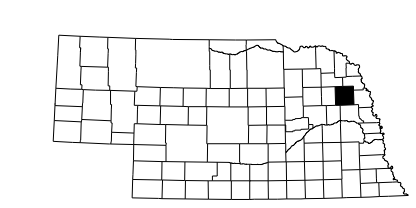
STATE FUNCTIONAL CLASSIFICATION

- INTERSTATE
- EXPRESSWAY
- MAJOR ARTERIAL
- OTHER ARTERIAL
- COLLECTOR
- REMOTE RESIDENTIAL (Rural Only)
- MINIMUM MAINTENANCE (Rural Only)
- SCENIC RECREATION (Rural Only)
- URBANIZED BOUNDARY

All Roads Not Otherwise Indicated Are Classified As Local



LAMBERT CONFORMAL CONIC PROJECTION
1983 NORTH AMERICAN DATUM
NEBRASKA COORDINATE SYSTEM



KEY TO COUNTIES
This map is to be used for information only and is not intended to show, guarantee, or to be certified as an official road map. No warranty, guarantee or representation for the accuracy of the information and services on which it is based is made. Any information and services should be reviewed independently.

