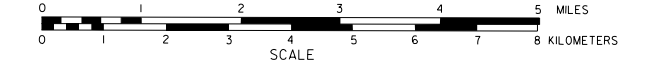
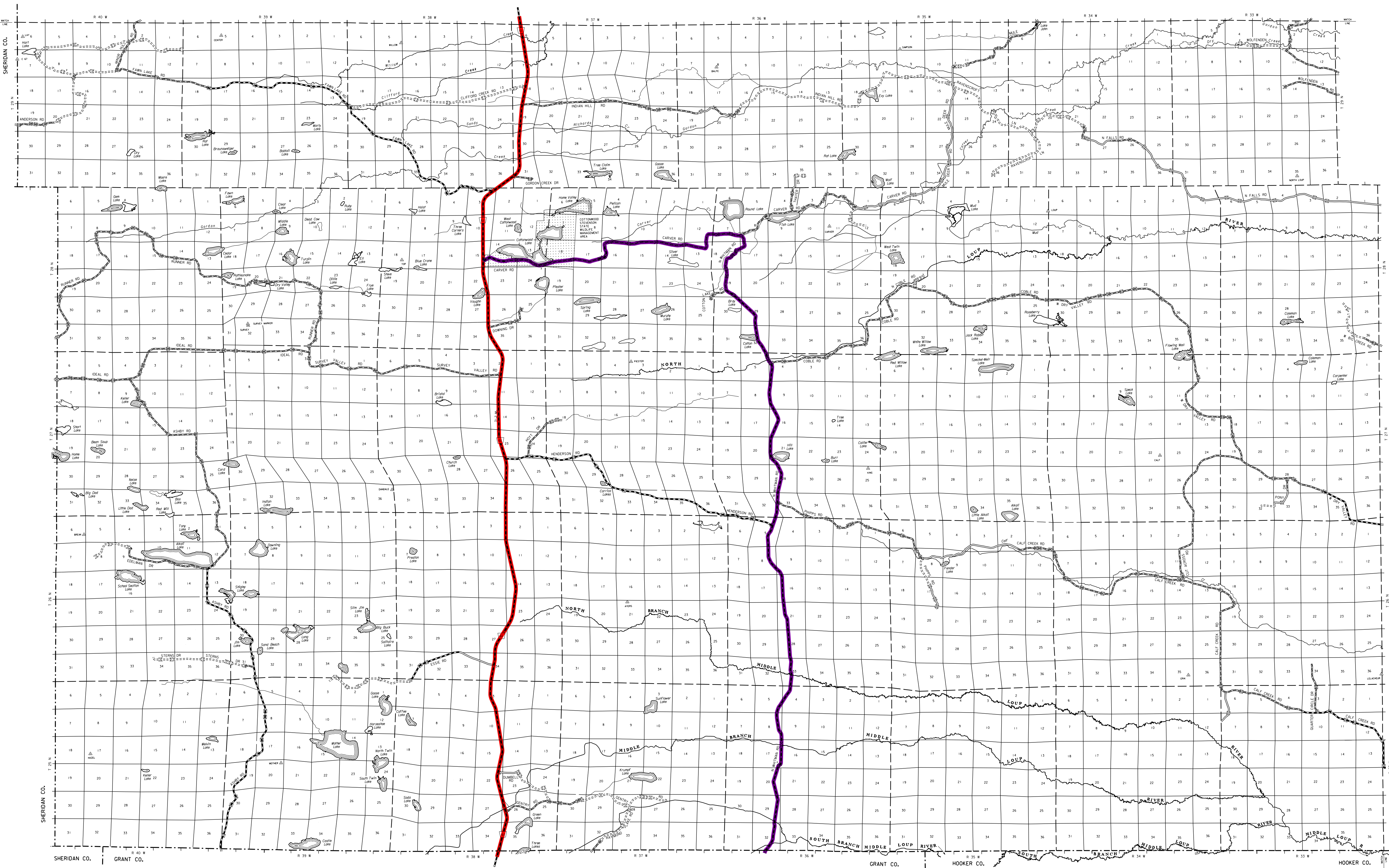


GENERAL HIGHWAY MAP
CHERRY COUNTY
 SOUTHWEST QUARTER
NEBRASKA
 PREPARED BY THE
 DEPARTMENT OF ROADS
 GIS/MAPPING SECTION
 IN COOPERATION WITH THE
 U.S. DEPARTMENT OF TRANSPORTATION
 FEDERAL HIGHWAY ADMINISTRATION
 2016



REVISION HISTORY	
DATE	REVISION
OCTOBER 2014	NEW SUPERINTENDENT MAP
DECEMBER 2014	CORRECTED
DECEMBER 2015	SUPERINTENDENT REVIEW



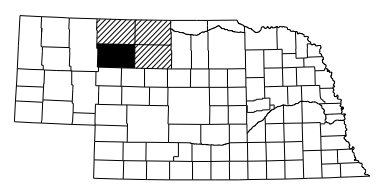
LEGEND

- | | | | |
|--|-------|---|-------|
| Primitive Road | | Filling Station | |
| Unimproved Road | | Gran Elevator | |
| Gravel or Crushed Rock | | Aggregate Pit | |
| Asphalt/Bituminous Surface | | Agricultural Experiment Station | |
| Multiple Lane Undeveloped Highway | | Educational Institutions | |
| Asphalt/Bituminous Surface | | Public Use Area | |
| Concrete/Brick Surface | | Recreation Areas (Swimming, Fishing, Hunting) | |
| Multiple Lane Undeveloped Highway | | Rest Area | |
| Concrete/Brick Surface | | Ranger Station | |
| Gravel or Crushed Rock | | Plan Hatchery | |
| Interstate Highway with Full Access | | Correctional Institution | |
| Interstate Highway with Limited Access | | Tourist Court or Motel | |
| State-Numbered Highway | | Monument-Small | |
| State-Numbered Highway Spur | | Musical | |
| State-Numbered Highway Link | | Firestation | |
| Highway Reference Post Number | | Courthouse | |
| Interstate Exit Number | | Armory | |
| Wide Stream | | Post Office | |
| Narrow Stream | | Highway Maintenance Yard | |
| Irrigation (Open) | | Bump Area | |
| Reservoir, Pond or Lake | | Sewerage Disposal Plant | |
| Reservoir with Dam | | Water Supply Stand Pipe | |
| Steel Bridge-Any Type | | Radio or TV Station | |
| General Bridge (Wood, Steel, Concrete) | | Weight Station or Port of Entry | |
| Arch Bridge | | Comedor or Municipal Airport | |
| Pedestrian Underpass | | Airport with Paved Runways | |
| Pedestrian Overpass | | State Boundary | |
| Railroad Overpass | | County Boundary | |
| Railroad Underpass | | Township Line | |
| Railroad | | Section Line | |
| Dam with Road on Top | | Corporate Limit Lines | |
| Cattle Guard | | Parks and Other Reservations | |
| Dwelling | | Boundary Limits of Area Shown in Photographs (See Appendix for details) | |
| Row of Dwellings | | State Capitol | |
| Cemetery | | County Seat | |
| Church or Other Religious Institution | | Other Cities and Villages | |
| Church with Cemetery Adjacent | | Incorporated City or Village | |
| Bus Stop | | Trigonization Station | |
| Industrial Plant | | Points Between Which Distances Are Measured (Indicated True) | |

- LEGEND**
STATE FUNCTIONAL CLASSIFICATION
- INTERSTATE [Red line]
 - EXPRESSWAY [Orange line]
 - MAJOR ARTERIAL [Purple line]
 - OTHER ARTERIAL [Blue line]
 - COLLECTOR [Green line]
 - REMOTE RESIDENTIAL (Rural Only) [Light Blue line]
 - MINIMUM MAINTENANCE (Rural Only) [Light Green line]
 - SCENIC RECREATION (Rural Only) [Light Purple line]
 - URBANIZED BOUNDARY [Dashed line]

All Roads Not Otherwise Indicated Are Classified As Local

LAMBERT CONFORMAL CONIC PROJECTION
 1983 NORTH AMERICAN DATUM
 NEBRASKA COORDINATE SYSTEM



KEY TO COUNTIES

POPULATION AS OF 2010 CENSUS
 STATE HIGHWAYS CORRECTED TO 2014
 DIGITAL AERIAL PHOTOGRAPHY (DAP) TAKEN IN 2012