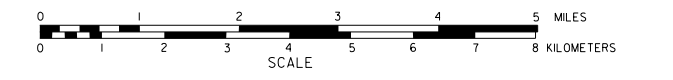


GENERAL HIGHWAY MAP CLAY COUNTY NEBRASKA

PREPARED BY THE
DEPARTMENT OF ROADS
GIS/MAPPING SECTION
IN COOPERATION WITH THE
U.S. DEPARTMENT OF TRANSPORTATION
FEDERAL HIGHWAY ADMINISTRATION



INVENTORY DATE:
2003

NAME	DATE	REVISION
C. VESARNA	MARCH 2003	COUNTY
L.G. CHAMBERLAIN	MARCH 2003	COUNTY
L.G. CHAMBERLAIN	JUNE 2003	11 T.I.S.T.M.
S. BRAUN	DECEMBER 2003	RD P33 REMOVED

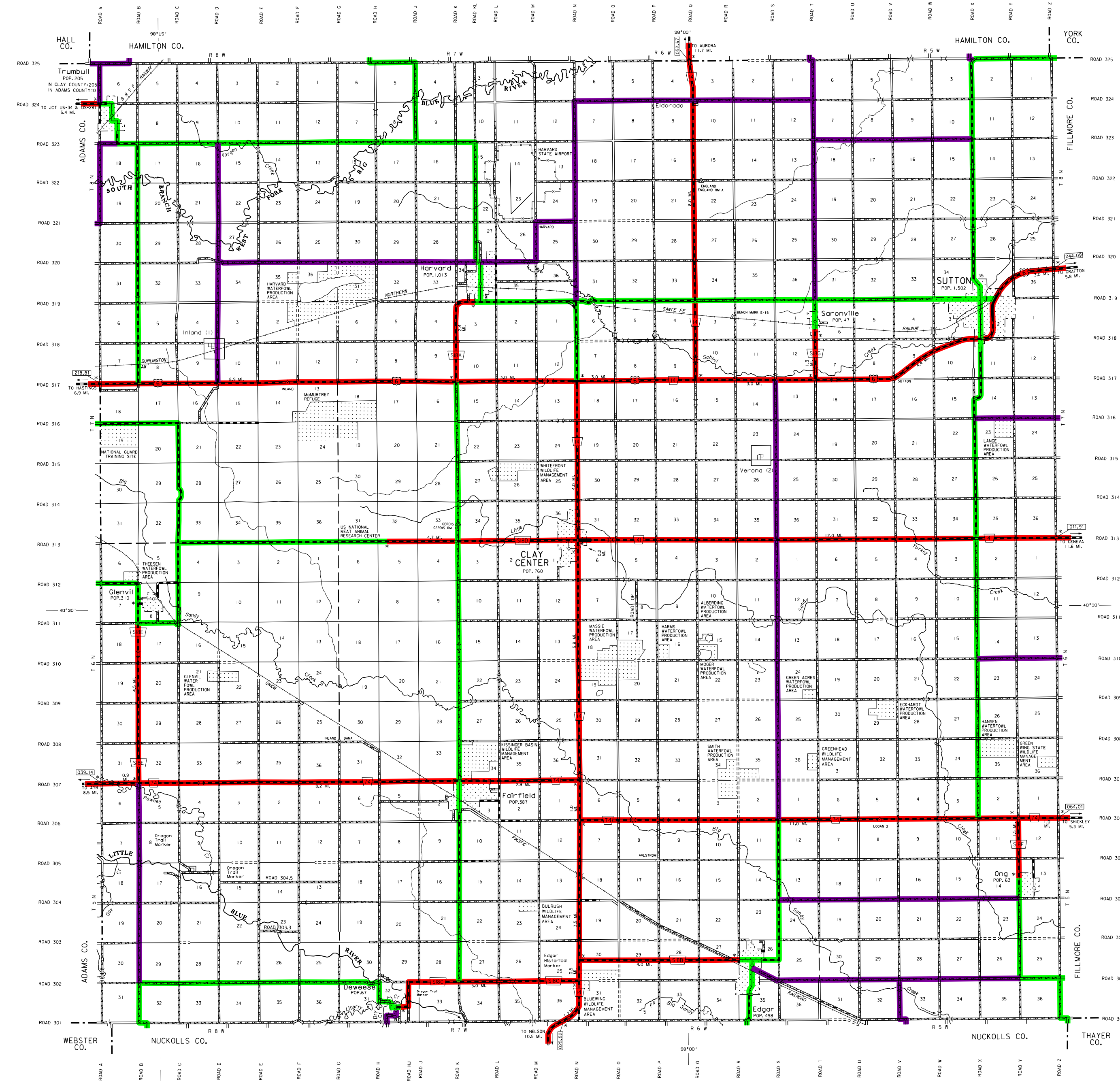
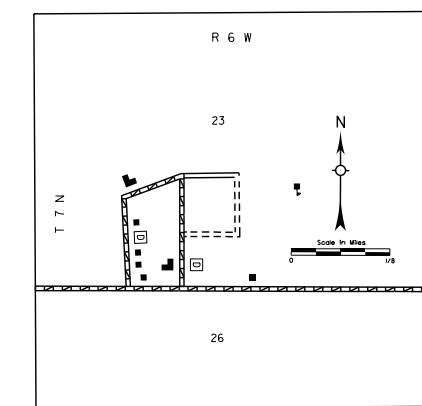
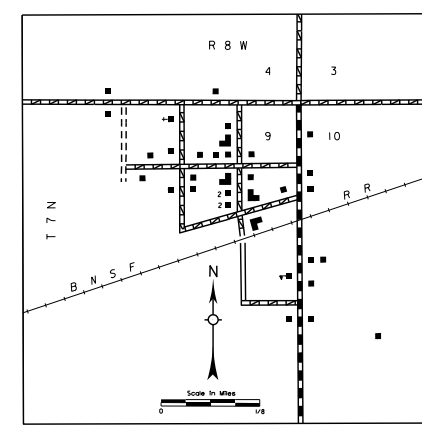
LEGEND

- | | | | |
|------------------------------------------------|-------|----------------------------------------------|-------|
| Primitive Road | | Filling Station | |
| Unimproved Road | | Grain Elevator | |
| Gravel or Cracked Road | | Aggregator Pk | |
| Asphalt/Bituminous Surface | | Agricultural Experimental Station | |
| Multiple Lane Undivided Highway | | Educational Institutions | |
| Asphalt/Bituminous Surface | | Public Use Area | |
| Concrete/Brick Surface | | Recreational Facilities | |
| Multiple Lane Undivided Highway | | Rest Area | |
| Concrete/Brick Surface | | Ranger Station | |
| Divided Highway | | Fish Hatchery | |
| Interstate Highway with Full Control of Access | | Community Hall | |
| Side Roads and Streets | | Correctional Institution | |
| 911 Numbered Road | | Tourist Camp or Motel | |
| Interstate Numbered Highway | | Monument-Small | |
| US-Numbered Highway | | Museum | |
| State-Numbered Highway | | Prison | |
| State-Numbered Highway Spur | | Courthouse | |
| State-Numbered Highway Link | | Armory | |
| Highway Reference Post Number | | Post Office | |
| Interstate Exit Number | | Highway Maintenance Yard | |
| Wide Stream | | Dune Area | |
| Narrow Stream | | Sewage Bypass Plant | |
| Irrigation Ditch | | Water Supply Stand Pipe | |
| Reservoir, Pond or Lake | | Radio or TV Station | |
| Reservoir with Dam | | Weight Station or Point of Entry | |
| Highway Bridge Any Type | | Commercial or Municipal Airport | |
| Small Bridges Closely Spaced | | Airport with Paved Runways | |
| Medium Bridges Closely Spaced | | State Boundary | |
| Large Bridges Closely Spaced | | County Boundary | |
| Arch Bridge | | Township Line | |
| Truss Bridge | | Section Line | |
| Pedestrian Underpass | | Corporate Joint Lines | |
| Pedestrian Overpass | | Parks and Other Reservations | |
| Railroad Underpass | | Boundary Lines of Area Open to Encroachments | |
| Railroad Overpass | | State Right-of-Way | |
| Railroad | | County Seat | |
| State Right-of-Way | | Other Cities and Villages | |
| Don with Road on Top | | Dwelling | |
| Cattle Guard | | Row of Buildings | |
| Well | | Cemetery | |
| Triangulation Station | | Church or Other Religious Institution | |
| Incorporated City or Village | | Church with Cemetery Adjacent | |
| Point of Interest | | Highway Reference Post | |
| Latitude and Longitude | | Industrial Plant | |

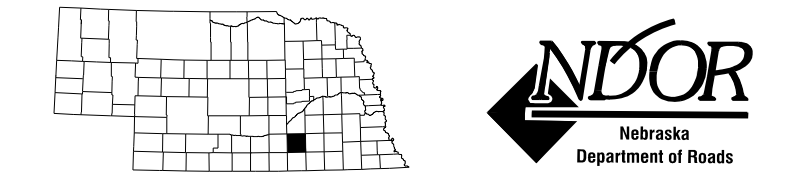
LEGEND STATE FUNCTIONAL CLASSIFICATION

- INTERSTATE [Red Line]
- EXPRESSWAY [Orange Line]
- MAJOR ARTERIAL [Yellow Line]
- OTHER ARTERIAL [Green Line]
- COLLECTOR [Blue Line]
- REMOTE RESIDENTIAL (Rural Only) [Purple Line]
- MINIMUM MAINTENANCE (Rural Only) [Pink Line]
- SCENIC RECREATION (Rural Only) [Light Blue Line]
- URBANIZED BOUNDARY [Dashed Line]

All Roads Not Otherwise Indicated Are Classified As Local



LAMBERT CONFORMAL CONIC PROJECTION
1983 NORTH AMERICAN DATUM
NEBRASKA COORDINATE SYSTEM



KEY TO COUNTIES
This map is to be used for information only and is not intended to be used as a legal document. The Nebraska Department of Roads makes no warranty, express or implied, for the accuracy of the information and does not hold itself liable for errors or omissions. Any inaccuracies should be reported to NDOR.

POPULATION AS OF 2010 CENSUS
STATE HIGHWAYS CORRECTED TO 2003
DIGITAL AERIAL PHOTOGRAPHY (DAP)