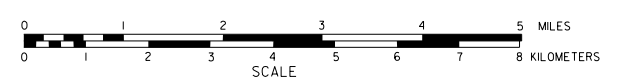


GENERAL HIGHWAY MAP BOX BUTTE COUNTY NEBRASKA

PREPARED BY THE
DEPARTMENT OF ROADS
GIS/MAPPING SECTION
IN COOPERATION WITH THE
U.S. DEPARTMENT OF TRANSPORTATION
FEDERAL HIGHWAY ADMINISTRATION



INVENTORY DATE:
2005

NAME	DATE	REVISION
L. COLGATH	APRIL 29, 2003	ITL SYSTEM
B. NELSON	DEC 20, 2004	HIGHWAY SUPERINTEMENT
L. COLGATH	FEB 2006	ITL SYSTEM
A. WOOD	APR 2006	REVISIONS OF ROAD #1000
C. COVARD	JULY 2010	ROAD CHANGE
	2012	MUNICIPAL BOUNDARY & CEMETERY
	NOV 2013	ALLIANCE CORP. LIMITS ADDITION

LEGEND

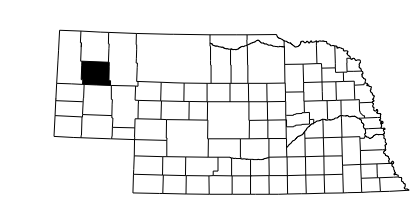
- Primitive Road
- Unimproved Road
- Gravel or Crushed Rock
- Aggregate Pits
- Asphalt/Bituminous Surface
- Multiple Lane Undivided Highway
- Asphalt/Bituminous Surface
- Concrete/Asphalt Surface
- Multiple Lane Undivided Highway
- Concrete/Asphalt Surface
- Divided Highway
- Interstate Highway with Full Control of Access
- State Road and Street
- 911 NAMED Numbered Road
- Interstate-Numbered Highway
- US-Numbered Highway
- State-Numbered Highway
- State-Numbered Highway Spur
- State-Numbered Highway Line
- Highway Reference Post Number
- Interstate Exit Number
- Wide Street
- Narrow Street
- Irrigation Ditch
- Reservoir, Pond or Lake
- Reservoir, With Dam
- Highway Bridge Any Type
- Small Bridges Closely Spaced
- Concrete/Asphalt Bridge
- General Bridge
- Arch Bridge
- Truss Bridge
- Pedestrian Overpass
- Railroad Overpass
- Railroad Underpass
- Highroad
- Dam with Road on Top
- Cattle Guard
- Dwelling
- Row of Dwellings
- Center of or Other Religious Institution
- Church with Cemetery Adjacent
- Hospital
- Business
- Industrial Plant
- Filling Station
- Agricultural Experimental Station
- Educational Institutions
- Public Use Areas
- Recreational Facilities
- Rest Area
- Ranger Station
- Fish Hatchery
- Community Hall
- Correctional Institution
- Tourist Court or Motel
- Monument-Shed
- Museum
- Firestation
- Courthouse
- Artery
- Post Office
- Highway Maintenance Yard
- Dump Area
- Sewage Disposal Plant
- Water Supply Stand Pipe
- Railroad or Municipal Airport
- Airport with Paved Runways
- Township Line
- County Boundary
- Section Line
- Corporate Limit Lines
- Parks and Other Reservations
- Boundary Lines of Area Shown to Encroachment on Adjacent
- State Capitol
- County Seat
- Other Cities and Villages
- Incorporated City or Village
- Transit Station
- Points Between Which Distances are Measured Indicated Thus
- Latitude and Longitude

LEGEND
STATE FUNCTIONAL CLASSIFICATION

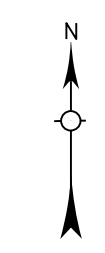
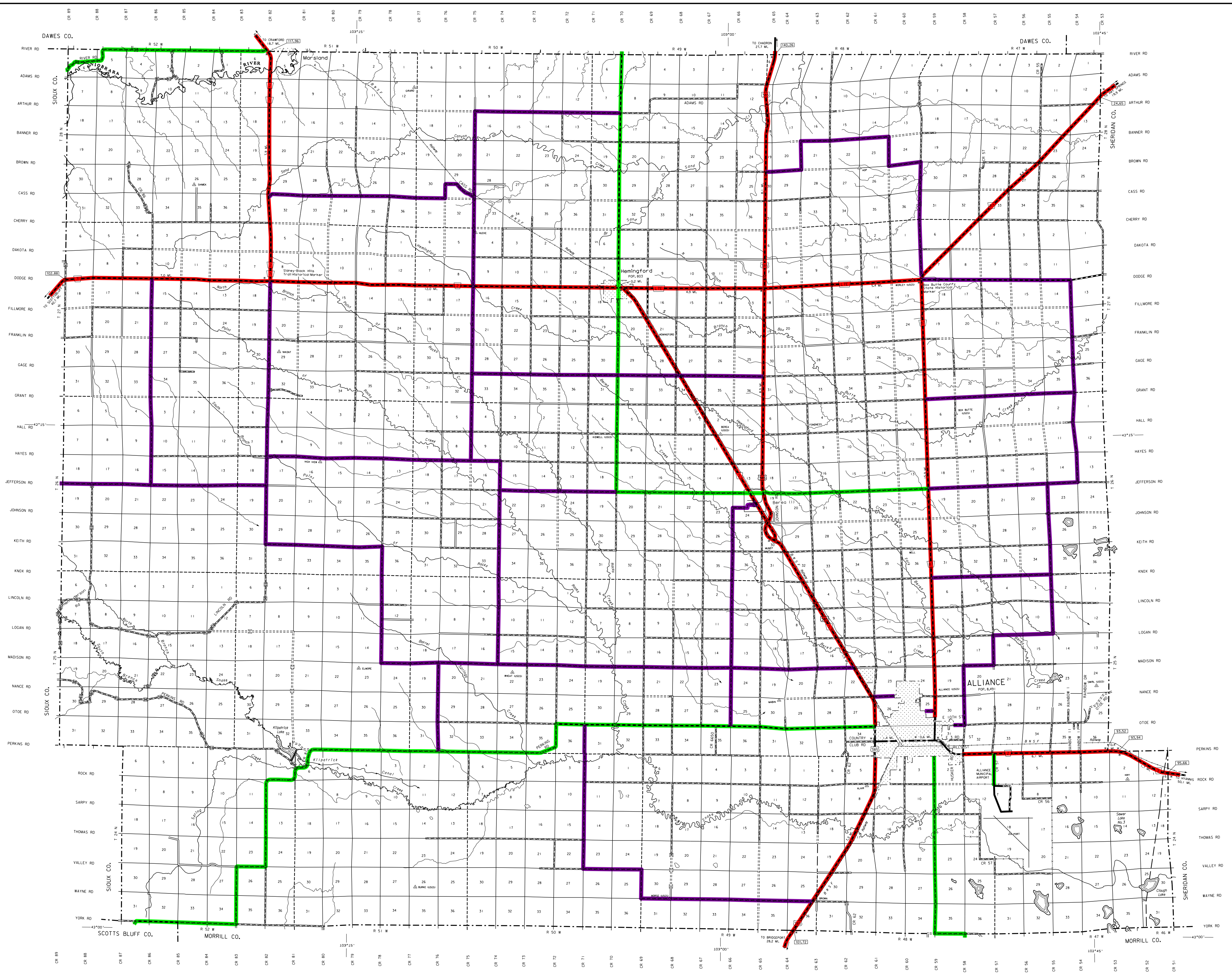
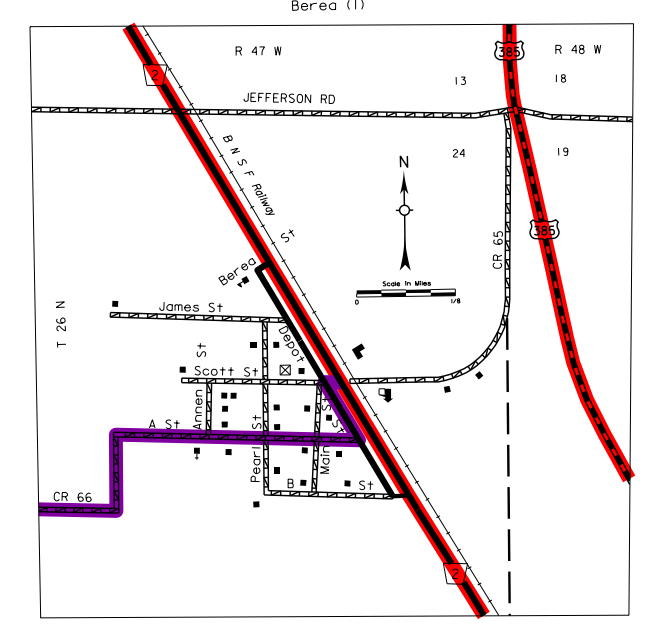
- INTERSTATE
- EXPRESSWAY
- MAJOR ARTERIAL
- OTHER ARTERIAL
- COLLECTOR
- REMOTE RESIDENTIAL (Rural Only)
- MINIMUM MAINTENANCE (Rural Only)
- SCENIC RECREATION (Rural Only)
- URBANIZED BOUNDARY

All Roads Not Otherwise Indicated Are Classified As Local

LAMBERT CONFORMAL CONIC PROJECTION
1983 NORTH AMERICAN DATUM
NEBRASKA COORDINATE SYSTEM



KEY TO COUNTIES
This map is to be used for information only and is not intended to be used as a legal document. The Nebraska Department of Roads does not warrant the accuracy or completeness of the information on this map. Any inaccuracies should be reported to NDOR.



www.transportation.nebraska.gov

POPULATION AS OF 2010 CENSUS
STATE HIGHWAYS CORRECTED TO 2005
DIGITAL AERIAL PHOTOGRAPHY (DOOP)