

# GENERAL HIGHWAY MAP ADAMS COUNTY NEBRASKA

PREPARED BY THE  
DEPARTMENT OF ROADS  
GIS/MAPPING SECTION

IN COOPERATION WITH THE  
U.S. DEPARTMENT OF TRANSPORTATION  
FEDERAL HIGHWAY ADMINISTRATION  
2000

SCALE 1:25,000  
0 1 2 3 4 5 6 7 8 9 10  
MILES  
0 1 2 3 4 5 6 7 8 9 10  
KILOMETERS

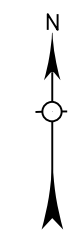
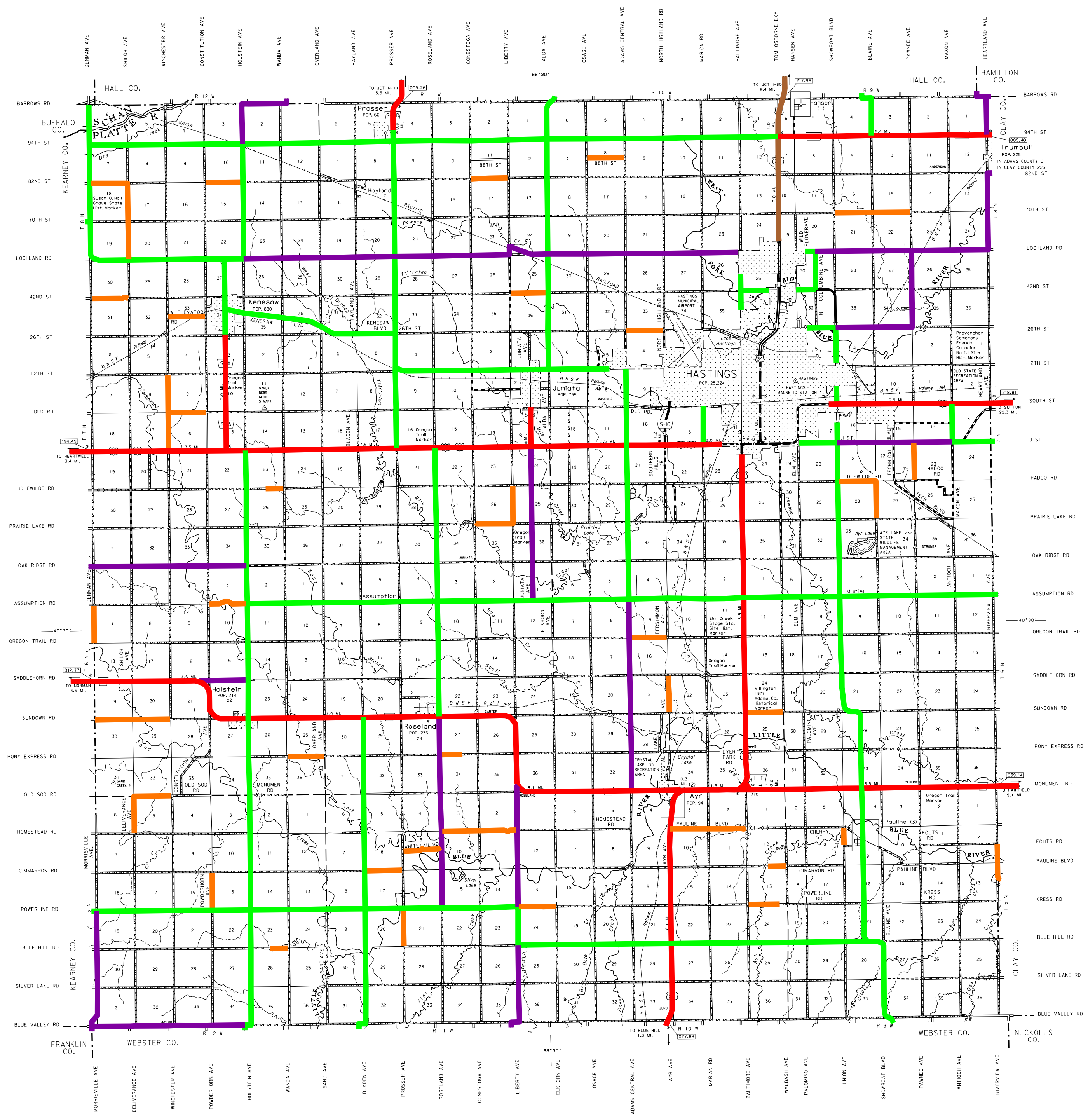
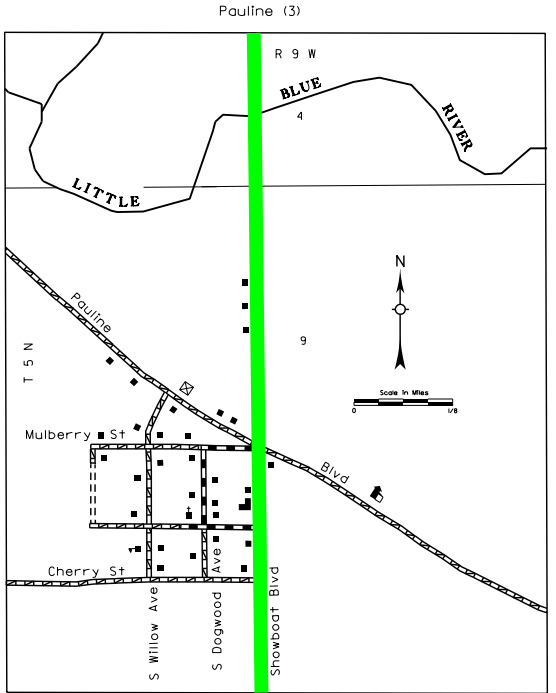
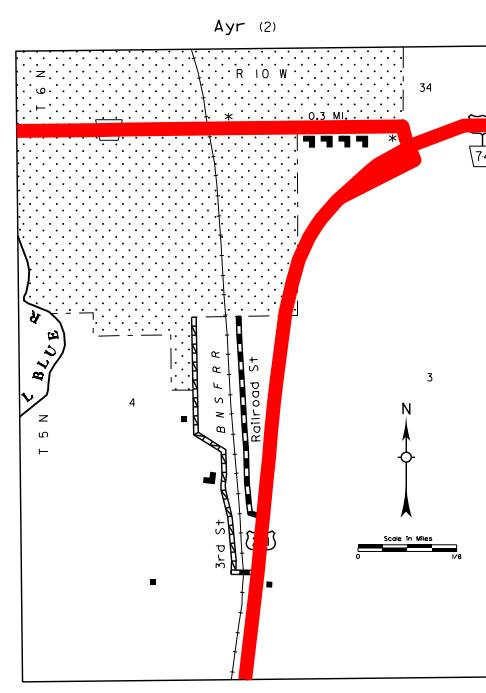
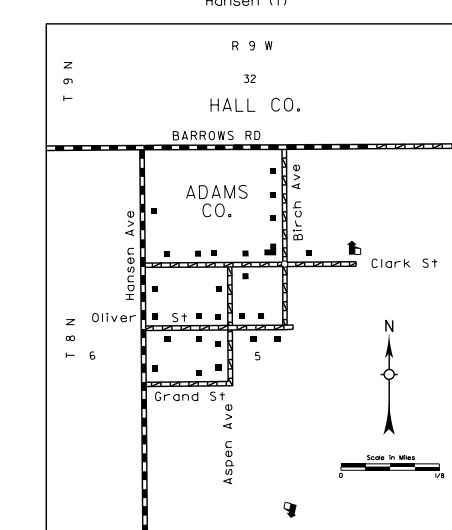
NAME	REVISION HISTORY	
DATE	DATE	
ADAMS COUNTY	OCT. 2000	911 SYSTEM
CLAY COUNTY	JUNE 2003	CLAY COUNTY
WEBSTER COUNTY	JULY 2009	UPDATE COUNTY LIMITS
ADAMS COUNTY	OCT. 2012	HASTINGS AVE
ADAMS COUNTY	APR. 2015	10,000' & 20,000' OFFSETS AT HASTINGS

### LEGEND

- |  |       |  |       |
|--|-------|--|-------|
| Primitive Road                                 | ..... | Filling Station  | ..... |
| Unimproved Road                                | ..... | Grain Elevator   | ..... |
| Gravel or Crushed Rock                         | ..... | Aggregate Pit  | ..... |
| Asphalt/Bituminous Surface                     | ..... | Ag-Tourist/Experimental Station                              | ..... |
| Multiple Lane Undivided Highway                | ..... | Educational Institutions                                     | ..... |
| Asphalt/Bituminous Surface                     | ..... | Public Use Area  | ..... |
| Concrete/Gravel Surface                        | ..... | Public Use Area (see note on page 10)                        | ..... |
| Multiple Lane Undivided Highway                | ..... | Rest Area  | ..... |
| Concrete/Gravel Surface                        | ..... | Ranger Station   | ..... |
| Divided Highway                                | ..... | Fish Hatchery  | ..... |
| Interstate Highway with Full Control of Access | ..... | Community Hall   | ..... |
| State-Numbered Highway                         | ..... | Correctional Institution                                     | ..... |
| 911 Numbered Road                              | ..... | Tourist Court or Motel                                       | ..... |
| Interstate-Numbered Highway                    | ..... | Monument-Sign  | ..... |
| State-Numbered Highway                         | ..... | Monument-Sign  | ..... |
| State-Numbered Highway Spur                    | ..... | Firestation  | ..... |
| State-Numbered Highway Link                    | ..... | Courthouse   | ..... |
| Highway Reference Post Number                  | ..... | Armory   | ..... |
| Interstate Exit Number                         | ..... | Post Office  | ..... |
| Wide Stream                                    | ..... | Highway Maintenance Yard                                     | ..... |
| Narrow Stream                                  | ..... | Dump Area  | ..... |
| Irrigation Ditch                               | ..... | Sewage Disposal Plant  | ..... |
| Reservoir, Pond or Lake                        | ..... | Water Supply Stand Pipe                                      | ..... |
| Reservoir, With Dam                            | ..... | Radio or TV Station  | ..... |
| Highway Bridge Any Type Over 20' Span          | ..... | Weight Station or Port of Entry                              | ..... |
| Small Bridges-Closely Spaced                   | ..... | Commercial or Municipal Airport                              | ..... |
| Medium Bridges-Closely Spaced                  | ..... | Airport with Fixed Runways                                   | ..... |
| General Bridge - see notes on page 10          | ..... | State Boundary   | ..... |
| Arch Bridge                                    | ..... | County Boundary  | ..... |
| Traffic Bridge                                 | ..... | Township Line  | ..... |
| Pedestrian Overpass                            | ..... | Section Line   | ..... |
| Railroad Overpass                              | ..... | Corporate Limit Lines  | ..... |
| Railroad                                       | ..... | Parks and Other Reservations                                 | ..... |
| Railroad with Road on Top                      | ..... | Boundary Lists of Area Shown in Diagrams (see map page 10)   | ..... |
| Other Cities and Villages                      | ..... | State Capital  | ..... |
| Row of Dwellings                               | ..... | County Seat  | ..... |
| Cemetery                                       | ..... | Other Cities and Villages                                    | ..... |
| Church or Other Religious Institution          | ..... | Incorporated City or Village                                 | ..... |
| Church with Cemetery Adjacent                  | ..... | Tripartisan Station  | ..... |
| Hospital                                       | ..... | Points Between Which Distances are Measured (indicated thus) | ..... |
| Business                                       | ..... | Latitude and Longitude                                       | ..... |
| Industrial Plant                               | ..... |  |       |

- ### LEGEND
- #### STATE FUNCTIONAL CLASSIFICATION
- INTERSTATE .....
  - EXPRESSWAY .....
  - MAJOR ARTERIAL .....
  - OTHER ARTERIAL .....
  - COLLECTOR .....
  - REMOTE RESIDENTIAL (Rural Only) .....
  - MINIMUM MAINTENANCE (Rural Only) .....
  - SCENIC RECREATION (Rural Only) .....
  - URBANIZED BOUNDARY .....

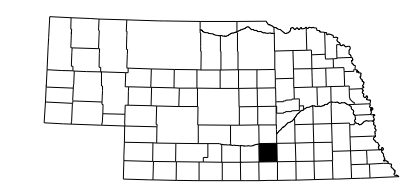
All Roads Not Otherwise Indicated Are Classified As Local



www.transportation.nebraska.gov

POPULATION AS OF 2010 CENSUS  
STATE HIGHWAYS CORRECTED TO 2004

LAMBERT CONFORMAL CONIC PROJECTION  
1983 NORTH AMERICAN DATUM  
NEBRASKA COORDINATE SYSTEM



KEY TO COUNTIES  
This map is to be used for information only and is not intended to show ownership or to be definitive on any road or other transportation-related information. It is not intended to be used for legal purposes or representations for the accuracy of this information and assumes no liability for errors or omissions. Any inaccuracies should be reported to the Department of Roads.