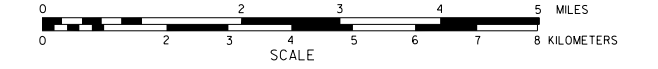


# GENERAL HIGHWAY MAP WEBSTER COUNTY NEBRASKA

PREPARED BY THE  
**DEPARTMENT OF ROADS**  
GIS/MAPPING SECTION  
IN COOPERATION WITH THE  
**U.S. DEPARTMENT OF TRANSPORTATION**  
FEDERAL HIGHWAY ADMINISTRATION  
**2011**



REVISION HISTORY	
DATE	REVISION
APRIL 2011	CO HIGHWAY SUPERINTENDENT
JAN 2012	CO HIGHWAY SUPERINTENDENT
JAN 2012	CO HIGHWAY SUPERINTENDENT
JAN 2012	CO HIGHWAY SUPERINTENDENT

### LEGEND

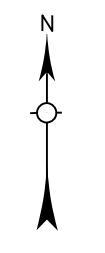
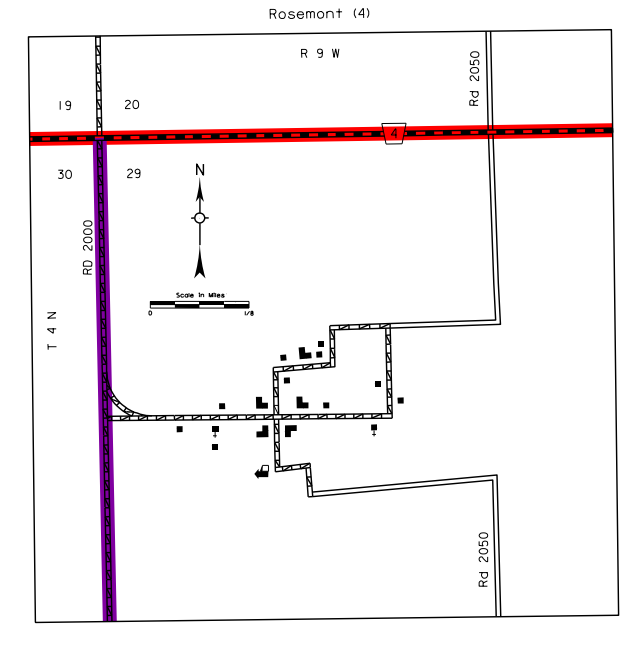
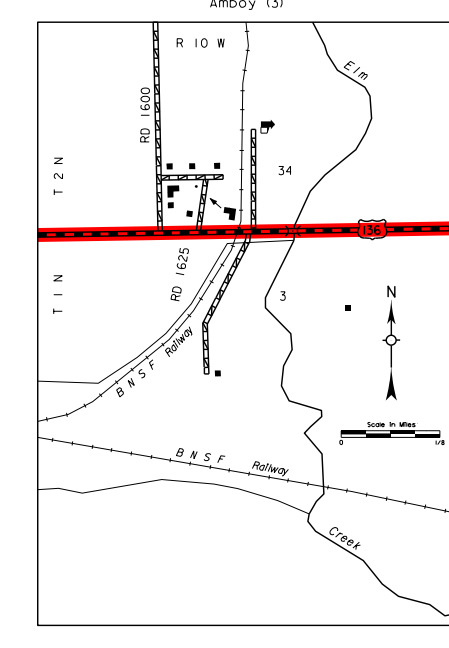
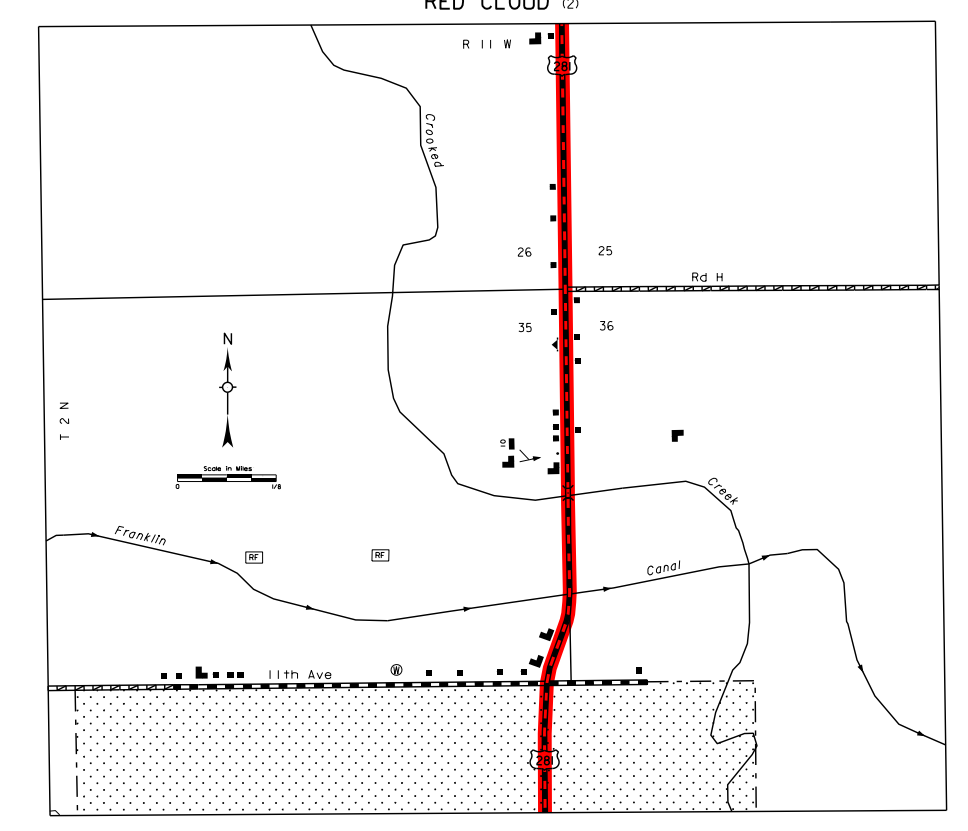
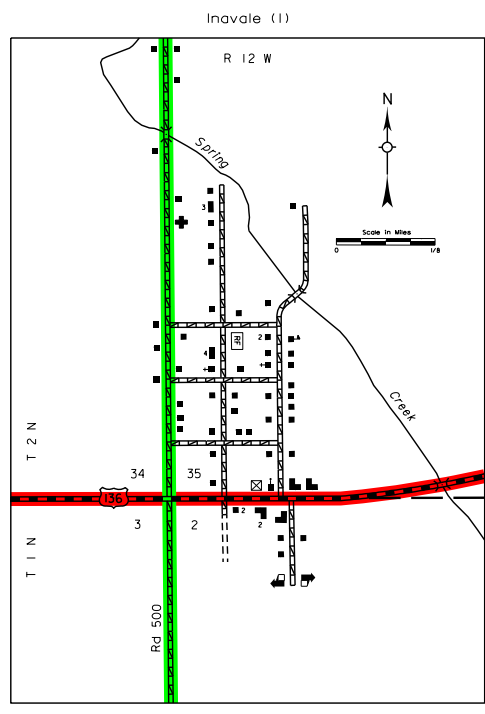
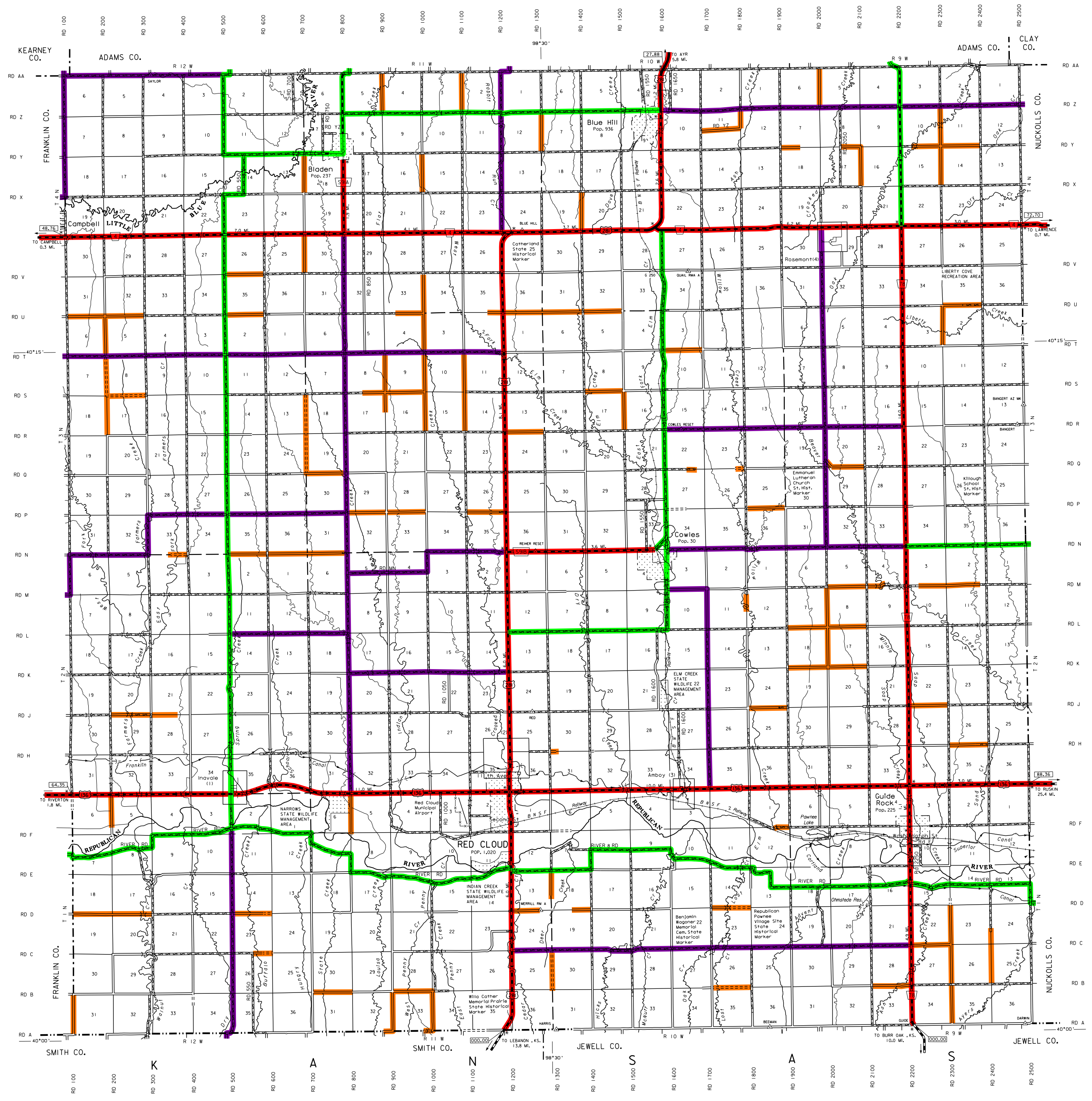
- |  |       |  |       |
|--|-------|--|-------|
| Primitive Road                                 | ..... | Filling Station  | ..... |
| Unimproved Road                                | ..... | Grain Elevator   | ..... |
| Gravel or Grouted Road                         | ..... | Aggregate Pk   | ..... |
| Asphalt/Bituminous Surface                     | ..... | Agricultural Experimental Station  | ..... |
| Multiple Lane Undivided Highway                | ..... | Educational Institutions   | ..... |
| Highway/Bituminous Surface                     | ..... | Public Use Area  | ..... |
| Concrete/Asphalt Surface                       | ..... | Recreational Facilities  | ..... |
| Multiple Lane Divided Highway                  | ..... | Rest Area  | ..... |
| Concrete/Asphalt Surface                       | ..... | Ranger Station   | ..... |
| Interstate Highway with Full Control of Access | ..... | Fire Station   | ..... |
| State Numbered Highway                         | ..... | Community Hall   | ..... |
| State Numbered Highway Spur                    | ..... | Correctional Institution   | ..... |
| State Numbered Highway Link                    | ..... | Tourist Court or Motel   | ..... |
| Highway Reference Post Number                  | ..... | Monument-Scall   | ..... |
| Interstate Exit Number                         | ..... | Museum   | ..... |
| Wide Street                                    | ..... | Firestation  | ..... |
| Narrow Street                                  | ..... | Courthouse   | ..... |
| Irrigation Ditch                               | ..... | Armory   | ..... |
| Reservoir, Pond or Lake                        | ..... | Post Office  | ..... |
| Reservoir, With Dam                            | ..... | Highway Maintenance Yard   | ..... |
| Highway Bridge Any Type Over 20 Feet           | ..... | Dump Area  | ..... |
| Small Bridges-Closely Spaced                   | ..... | Sewage Disposal Plant  | ..... |
| General Bridge                                 | ..... | Water Supply Stand Pipe  | ..... |
| Truss Bridge                                   | ..... | Roads or Tr Stations   | ..... |
| Passerion Underpass                            | ..... | Height Station or Port of Entry  | ..... |
| Passerion Overpass                             | ..... | Commercial or Municipal Airport  | ..... |
| Railroad Underpass                             | ..... | Airport with Travel Runways  | ..... |
| Railroad Overpass                              | ..... | State Boundary   | ..... |
| Dam with Road on Top                           | ..... | County Boundary  | ..... |
| Cattle Guard                                   | ..... | Township Line  | ..... |
| Dwelling                                       | ..... | Section Line   | ..... |
| Row of Dwellings                               | ..... | Corporate Limit Lines  | ..... |
| Church or Other Religious Institution          | ..... | Parks and Other Reservations   | ..... |
| Church with Cemetery Adjacent                  | ..... | Boundary Limits of Area Shown In Enlargements Use Enlargements for Further | ..... |
| Hospital                                       | ..... | State Capital  | ..... |
| Business                                       | ..... | County Seat  | ..... |
| Industrial Plant                               | ..... | Other Cities and Villages  | ..... |
|  |       | Incorporated City or Village   | ..... |
|  |       | Triangulation Station  | ..... |
|  |       | Points Between Which Distances Are Measured Indicated Truck                | ..... |
|  |       | Latitude and Longitude   | ..... |

### LEGEND

#### STATE FUNCTIONAL CLASSIFICATION

..... INTERSTATE  
..... EXPRESSWAY  
..... MAJOR ARTERIAL  
..... OTHER ARTERIAL  
..... COLLECTOR  
..... REMOTE RESIDENTIAL (Rural Only)  
..... MINIMUM MAINTENANCE (Rural Only)  
..... SCENIC RECREATION (Rural Only)  
..... URBANIZED BOUNDARY

All Roads Not Otherwise Indicated Are Classified As Local



LAMBERT CONFORMAL CONIC PROJECTION  
1983 NORTH AMERICAN DATUM  
NEBRASKA COORDINATE SYSTEM

KEY TO COUNTIES

POPULATION AS OF 2010 CENSUS  
STATE HIGHWAYS CONNECTED TO 2011

This map is to be used for information only and is not intended to show ownership, or to be used as a substitute for any other official map. The Nebraska Department of Roads does not warrant, guarantee, or represent for the accuracy of this information and assumes no liability for errors or omissions. Any inconsistencies should be reported to NDOR.