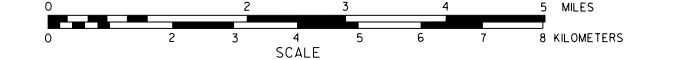
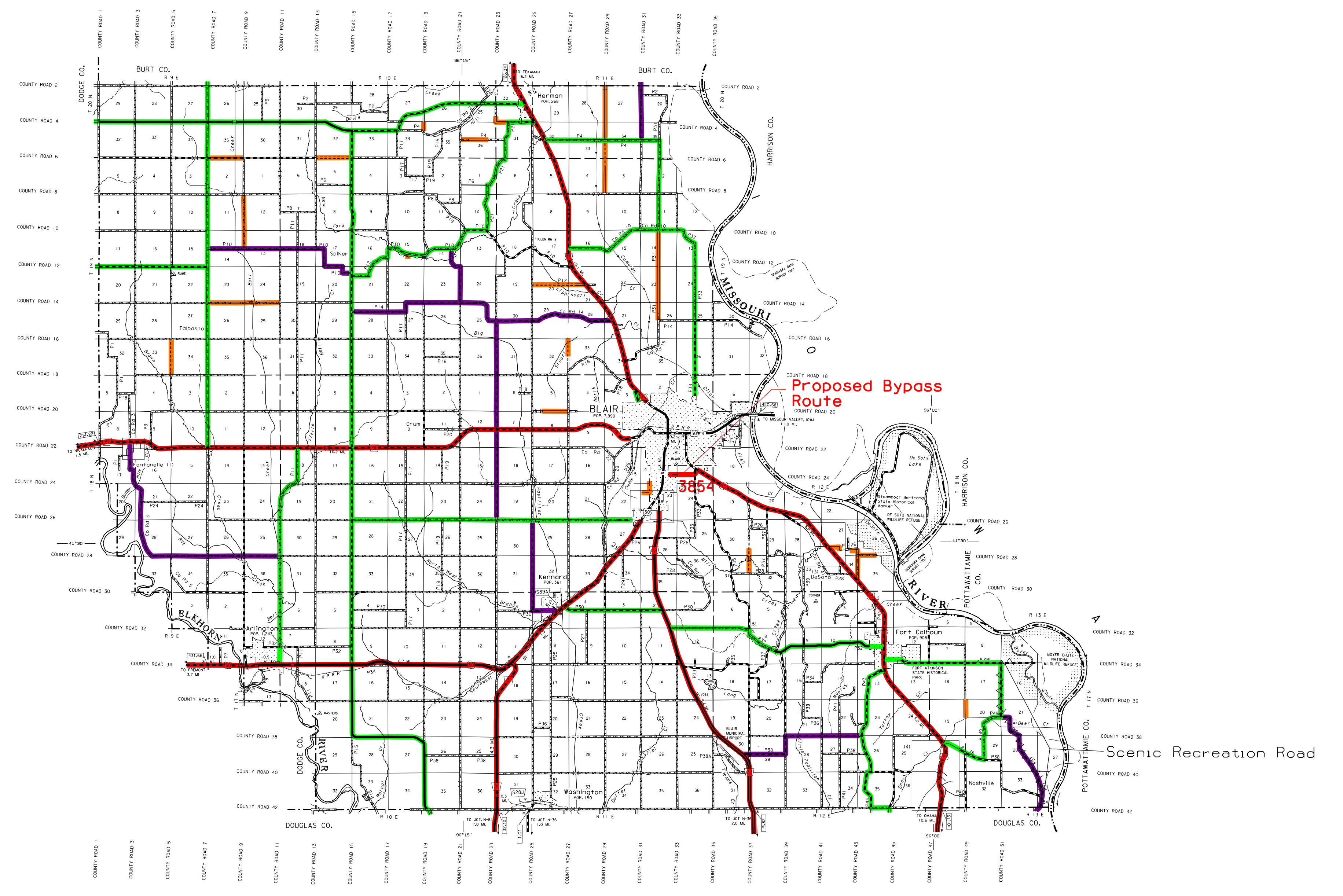
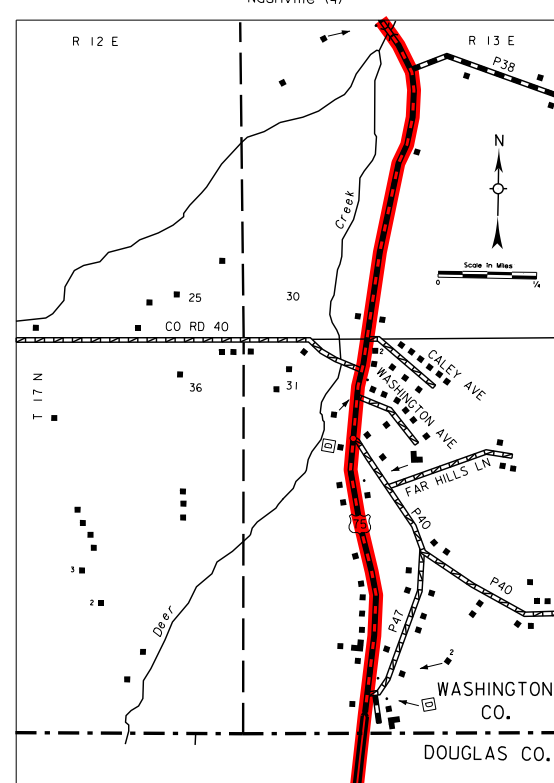
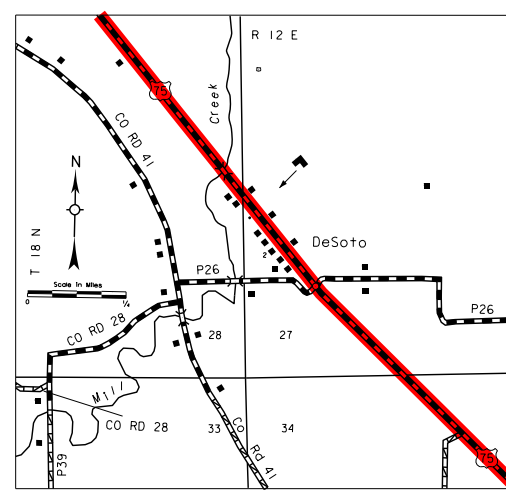
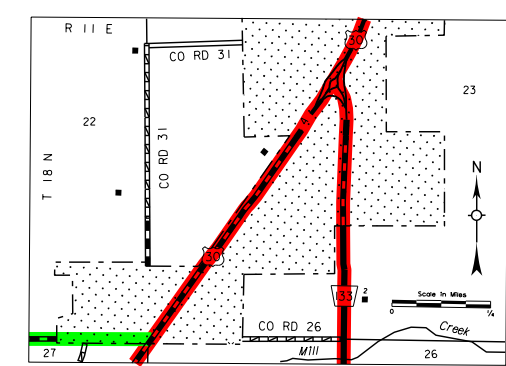
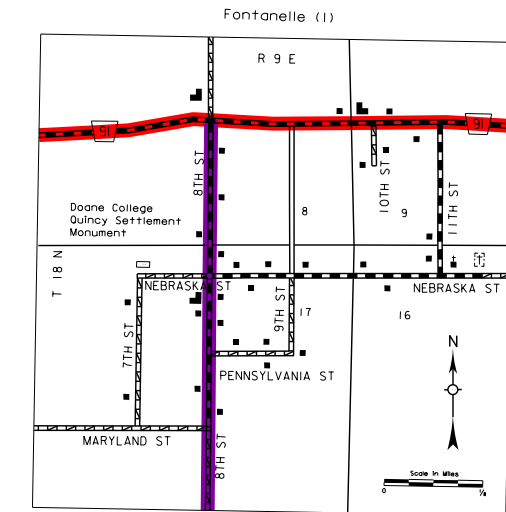


GENERAL HIGHWAY MAP WASHINGTON COUNTY NEBRASKA

PREPARED BY THE
DEPARTMENT OF ROADS
GIS/MAPPING SECTION
IN COOPERATION WITH THE
U.S. DEPARTMENT OF TRANSPORTATION
FEDERAL HIGHWAY ADMINISTRATION
2011



DATE	REVISION HISTORY
NOV 2011	REVISION COUNTY
JUNE 2015	N133 divided Hwy to rd 13,35



LEGEND

- Primitive Road
- Unimproved Road
- Gravel or Crushed Rock
- Asphalt/Bituminous Surface
- Multilane Lane Divided Highway
- Asphalt/Bituminous Surface
- Concrete/Gravel Surface
- Multilane Lane Unimproved Highway
- Interstate Highway with Full Control of Access
- Side Roads and Streets
- 911 Numbered Roads
- ADAMS ROAD
- Interstate-Numbered Highway
- US-Numbered Highway
- State-Numbered Highway
- State-Numbered Highway Spur
- State-Numbered Highway Line
- Highway Reference Post Number
- Interstate Exit Number
- Wide Stream
- Narrow Stream
- Irrigation Ditch
- Reservoir, Pond or Lake
- Reservoir, With Dam
- Highway Bridge Any Type
- Small Bridge-Closely Spaced
- Large Bridge-Open Span
- General Bridge
- Arch Bridge
- Truss Bridge
- Pedestrian Overpass
- Railroad Overpass
- Barbed Underpass
- Railroad
- Dam with Road on Top
- Cottle Guard
- Dwelling
- Row of Dwellings
- Cemetery
- Church or Other Religious Institution
- Church with Cemetery Adjacent
- Hospital
- Business
- Industrial Plant
- Filling Station
- Grain Elevator
- Aggregate Pit
- Agricultural Experimental Station
- Educational Institutions
- Public Use Area
- Recreation Area
- Public Utility
- Rest Area
- Ranger Station
- Flan Honorary
- Community Hall
- Correctional Institution
- Tourist Court or Motel
- Monument-Small
- Museum
- Courthouse
- Armory
- Water Supply Stand Pipe
- Highway Maintenance Ford
- Dump Area
- Sewage Disposal Plant
- Water Supply Stand Pipe
- Road or TV Station
- Weight Station or Port of Entry
- Commercial or Municipal Airport
- Airport with Runway
- State Boundary
- County Boundary
- Township Line
- Section Line
- Corporate Limit Lines
- Parks and Other Reservations
- Boundary Limits of Area Shown in Diagrams
- State Capitol
- County Seat
- Other Cities and Villages
- Incorporated City or Village
- Triangulation Station
- Point Between Main Distances Area
- Measured Indicated Thus
- Latitude and Longitude

LEGEND
STATE FUNCTIONAL CLASSIFICATION

INTERSTATE [Red Dashed Line]

EXPRESSWAY [Blue Dashed Line]

MAJOR ARTERIAL [Red Solid Line]

OTHER ARTERIAL [Green Solid Line]

COLLECTOR [Purple Solid Line]

REMOTE RESIDENTIAL (Rural Only) [Blue Solid Line]

MINIMUM MAINTENANCE (Rural Only) [Orange Solid Line]

SCENIC RECREATION (Rural Only) [Blue Wavy Line]

URBANIZED BOUNDARY [Red Dotted Line]

All Roads Not Otherwise Indicated Are Classified As Local



www.transportation.nebraska.gov

This map is to be used for information only and is not intended to show ownership or to be definitive on which roads are public under Nebraska Law. The Nebraska Department of Roads makes no warranties, guarantees or representations for the accuracy of this information and assumes no liability for errors or omissions. Any inconsistencies should be reported to NDOR.