

GENERAL HIGHWAY MAP THOMAS COUNTY NEBRASKA

PREPARED BY THE
DEPARTMENT OF ROADS
GIS/MAPPING SECTION
IN COOPERATION WITH THE
U.S. DEPARTMENT OF TRANSPORTATION
FEDERAL HIGHWAY ADMINISTRATION



INVENTORY DATE:
2000

REVISION HISTORY	
DATE	REVISION
OCT. 2000	COUNTY BOUNDARY
MAY 2003	COUNTY AIRPORT RELOCATION
OCT. 2007	STATE HIGHWAY
AUG. 2010	HIGHWAY ALIGNMENT
APR. 2011	HIGHWAY ALIGNMENT
AUG. 2014	SENECA UNINCORPORATED

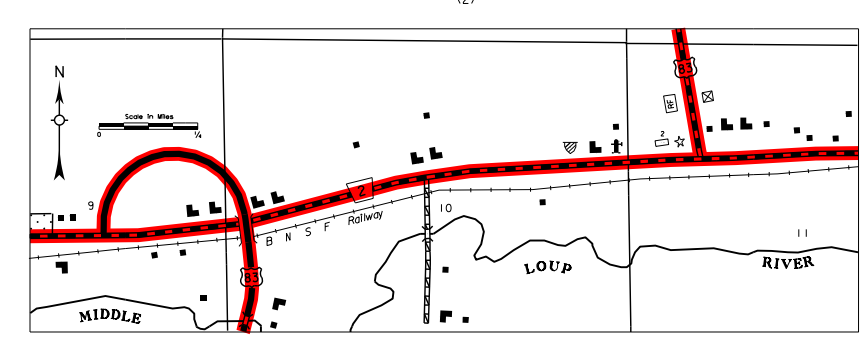
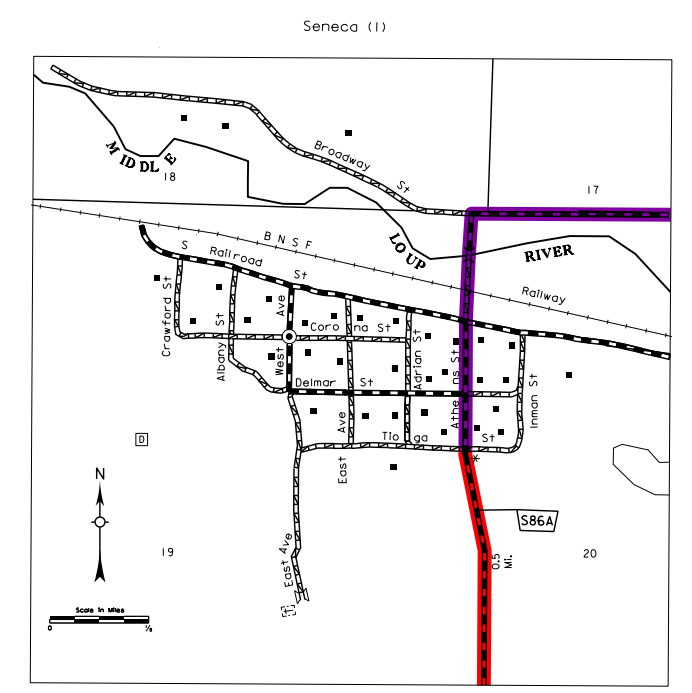
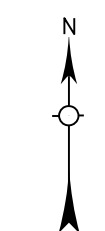
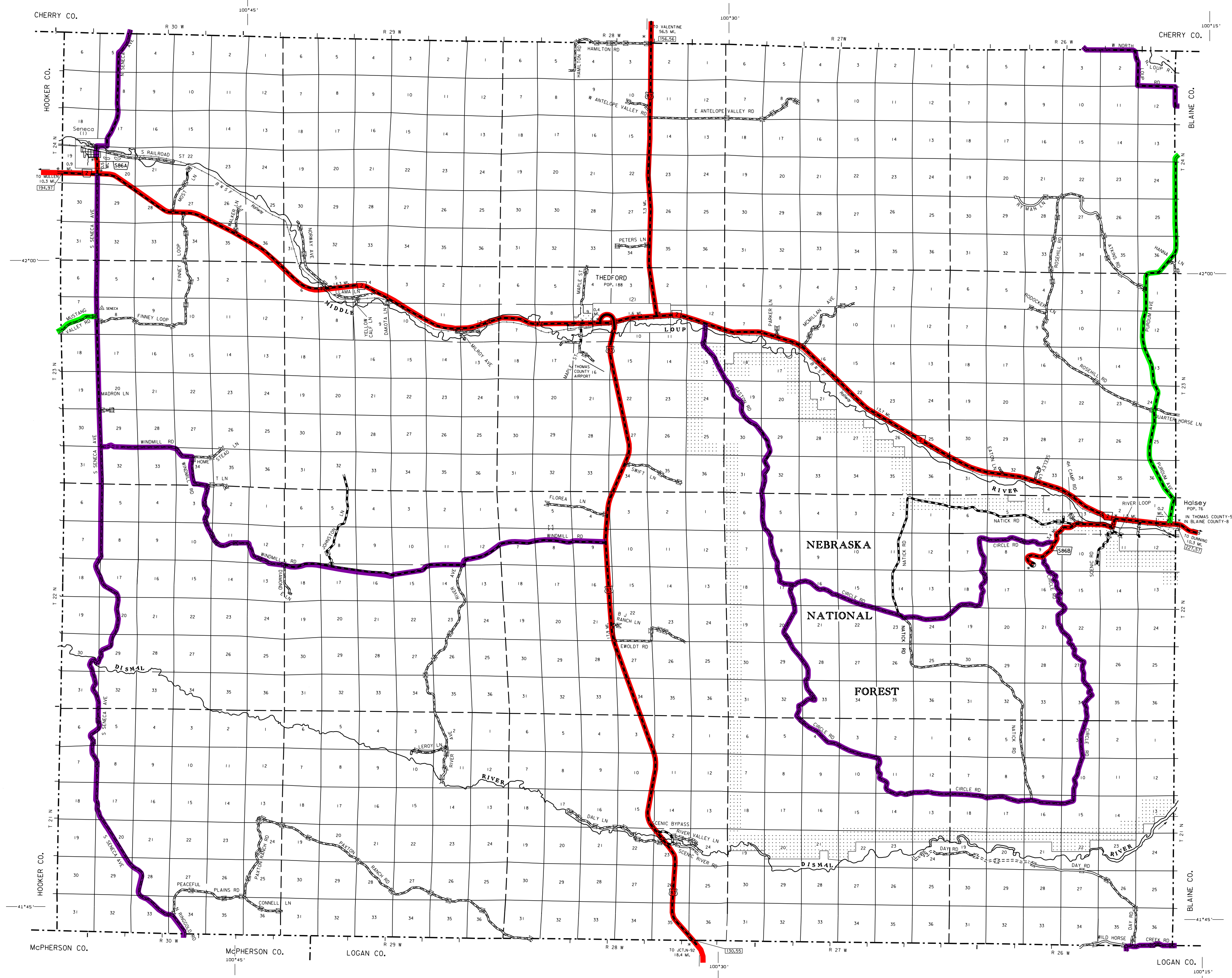
LEGEND

- Primitive Road
- Unimproved Road
- Gravel or Crushed Rock
- Asphalt/Bituminous Surface
- Multiple Lane Undivided Highway
- Concrete/Asphalt Surface
- Multiple Lane Undivided Highway
- Concrete/Asphalt Surface
- Divided Highway
- Interstate Highway with Full Control of Access
- Side Roads and Streams
- Road with Road on Top
- Interstate Exit Number
- Wide Stream
- Narrow Stream
- Irrigation Ditch
- Reservoir, Pond or Lake
- Reservoir with Dam
- Highway Bridge Any Type
- Small Bridge Classically Spaced
- General Bridge
- Arch Bridge
- Traffic Bridge
- Pedestrian Underpass
- Railroad Overpass
- Railroad Underpass
- Railroad
- Don with Road on Top
- Carrie Guard
- Dwelling
- Row of Dwellings
- Cemetery
- Church or Other Religious Institution
- Church with Cemetery Adjacent
- Hospital
- Business
- Industrial Plant
- Filling Station
- Crane Elevator
- Aggregate Pit
- Agricultural Experimental Station
- Educational Institutions
- Public Use Area
- Recreation Facility
- Rest Area
- Ranger Station
- Flan Hatchery
- Community Hall
- Correctional Institution
- Tourist Court or Motel
- Monument-Shall
- Museum
- Firestation
- Courthouse
- Artery
- Post Office
- Highway Maintenance Yard
- Dump Area
- Sewage Disposal Plant
- Water Supply Stand Pipe
- Radio or TV Station
- Weight Station or Port of Entry
- Comedor or Multipurpose
- Airport with Fenced Runways
- State Boundary
- Township Line
- County Boundary
- Township Line
- Section Line
- Corporate Limit Lines
- Parks and Other Reservations
- Boundary Limits of Area Shown in Encumbrance Map
- State Capitol
- County Seat
- Other Cities and Villages
- Incorporated City or Village
- Triangulation Station
- Points Between Shown Distances are Measured Indicated True
- Latitude and Longitude

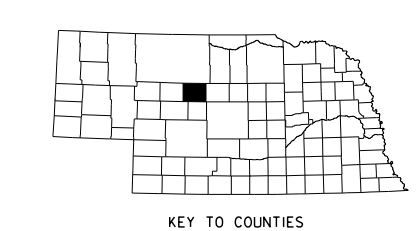
LEGEND

- ### STATE FUNCTIONAL CLASSIFICATION
- INTERSTATE
 - EXPRESSWAY
 - MAJOR ARTERIAL
 - OTHER ARTERIAL
 - COLLECTOR
 - REMOTE RESIDENTIAL (Rural Only)
 - MINIMUM MAINTENANCE (Rural Only)
 - SCENIC RECREATION (Rural Only)
 - URBANIZED BOUNDARY

All Roads Not Otherwise Indicated Are Classified As Local



LAMBERT CONFORMAL CONIC PROJECTION
1983 NORTH AMERICAN DATUM
NEBRASKA COORDINATE SYSTEM



This map is to be used for information only and is not intended to show ownership or to be definitive on which roads are public or private roads. The Nebraska Department of Roads makes no warranty, guarantee or representation for the accuracy of this information and assumes no liability for errors or omissions. Any inconsistencies should be reported to NDOR.

POPULATION AS OF 2010 CENSUS
STATE HIGHWAYS CORRECTED TO 2001