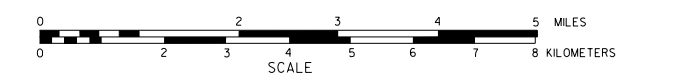


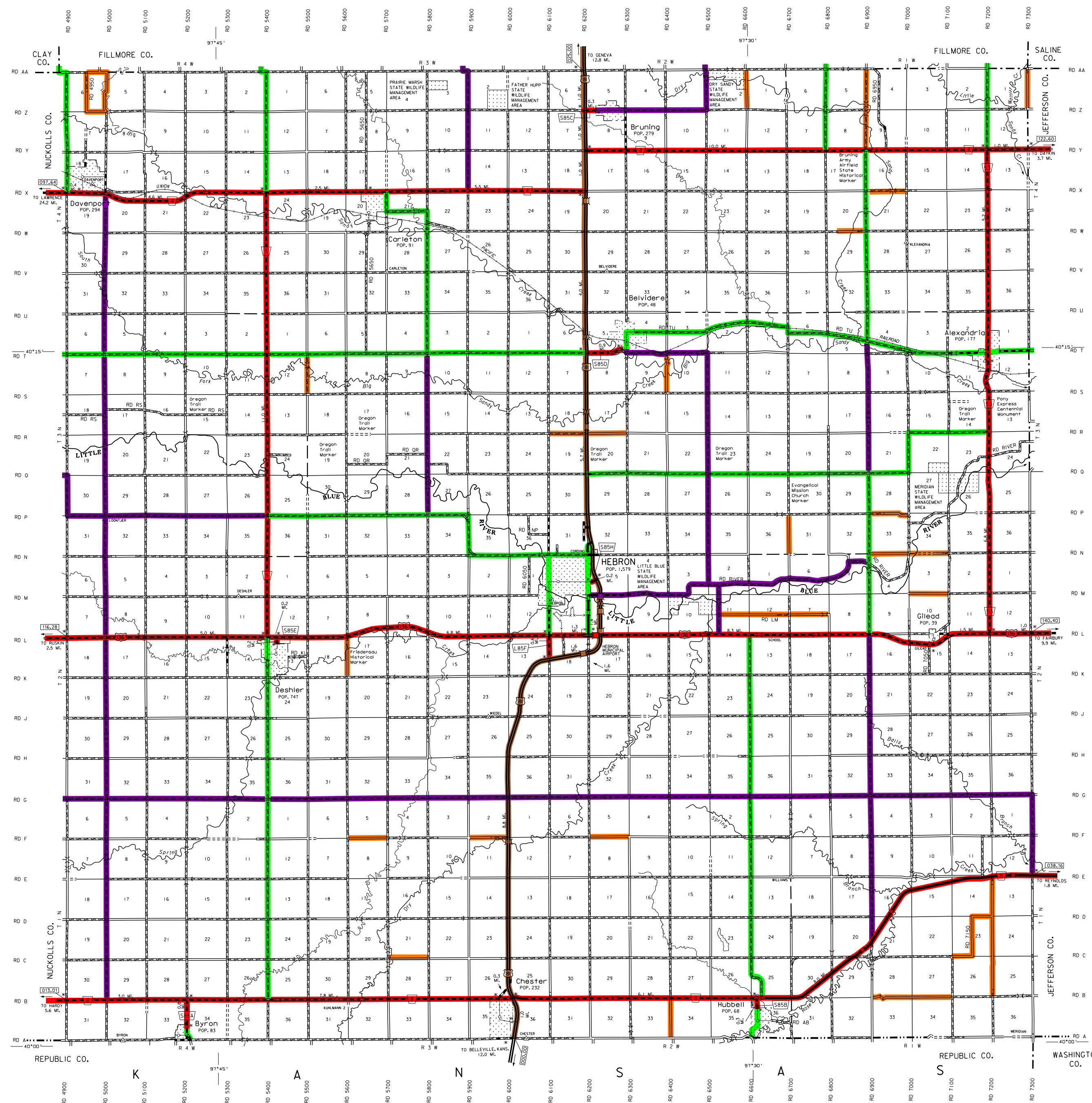
GENERAL HIGHWAY MAP THAYER COUNTY NEBRASKA

PREPARED BY THE
DEPARTMENT OF ROADS
GIS/MAPPING SECTION
IN COOPERATION WITH THE
U.S. DEPARTMENT OF TRANSPORTATION
FEDERAL HIGHWAY ADMINISTRATION



INVENTORY DATE:
2001

NAME	DATE	REVISION
C. VESBERG	OCTOBER 2001	911 SYSTEM
L. LUDLOWITZ	JAN. 2006	Removed priority road from N. Green Removed road from intersection of RD 4000 Changed RD 100 from dirt to gravel Changed RD 8 from dirt to gravel
	FEB. 2012	Changed RD 8 from dirt to gravel



LEGEND

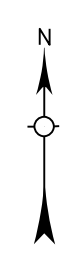
- Primitive Road
- Unimproved Road
- Gravel or Crushed Rock
- Asphalt/Bituminous Surface
- Multiple Lane Undivided Highway
- Asphalt/Bituminous Surface
- Concrete/Brick Surface
- Multiple Lane Undivided Highway
- Concrete/Brick Surface
- Divided Highway
- Interstate Highway with Full Control of Access
- State-Numbered Highway
- 911 NAMED/Numbered Roads
- Interstate-Numbered Highway
- State-Numbered Highway
- State-Numbered Highway Spur
- State-Numbered Highway Link
- Highway Reference Post Number
- Interstate Exit Number
- Wide Street
- Narrow Street
- Irrigation Ditch
- Reservoir, Pond or Lake
- Reservoir with Dam
- Low Span Bridge
- Short Bridge-Closely Spaced
- Suburbs, Suburban Lots, with or without Curbs (Bridges are shown)
- Arch Bridge
- Truss Bridge
- Pedestrian Underpass
- Roadway Overpass
- Railroad Overpass
- Railroad
- Don with Road on Top
- Grate Squee
- Dwelling
- Row of Dwellings
- Cemetery
- Church or Other Religious Institution
- Church with Cemetery Adjacent
- Hospital
- Business
- Industrial Plant
- Filling Station
- Grain Elevator
- Aggregate Pit
- Agricultural Experimental Station
- Educational Institutions
- Public Use Area
- Recreational Facilities
- Rest Area
- Ranger Station
- Fire Station
- Community Hall
- Correctional Institution
- Tourist Court or Motel
- Monument Shell
- Museum
- Fire Station
- Courthouse
- Army
- Post Office
- Highway Maintenance Yard
- State Boundary
- County Boundary
- Township Line
- Section Line
- Corporate Limit Lines
- Parks and Other Reservations
- Boundary Limits of Area Shown in Legend (see inventory for details)
- State Capital
- County Seat
- Other Cities and Villages
- Incorporated City or Village
- Triangulation Station
- Points Between which Distances are Measured (indicated thus)
- Latitude and Longitude

LEGEND

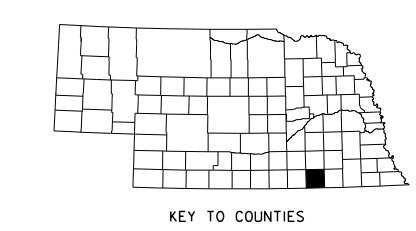
STATE FUNCTIONAL CLASSIFICATION

- INTERSTATE
- EXPRESSWAY
- MAJOR ARTERIAL
- OTHER ARTERIAL
- COLLECTOR
- REMOTE RESIDENTIAL (Rural Only)
- MINIMUM MAINTENANCE (Rural Only)
- SCENIC RECREATION (Rural Only)
- URBANIZED BOUNDARY

All Roads Not Otherwise Indicated Are Classified As Local



LAMBERT CONFORMAL CONIC PROJECTION
1983 NORTH AMERICAN DATUM
NEBRASKA COORDINATE SYSTEM



This map is to be used for information only and is not intended to show ownership or to be definitive on which roads are public or private. The Nebraska Department of Roads makes no warranties, guarantees or representations for the accuracy of the information and assumes no liability for errors or omissions. Any inconsistencies should be reported to NDOR.