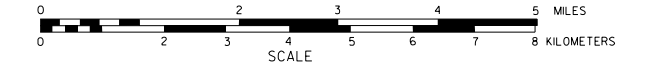
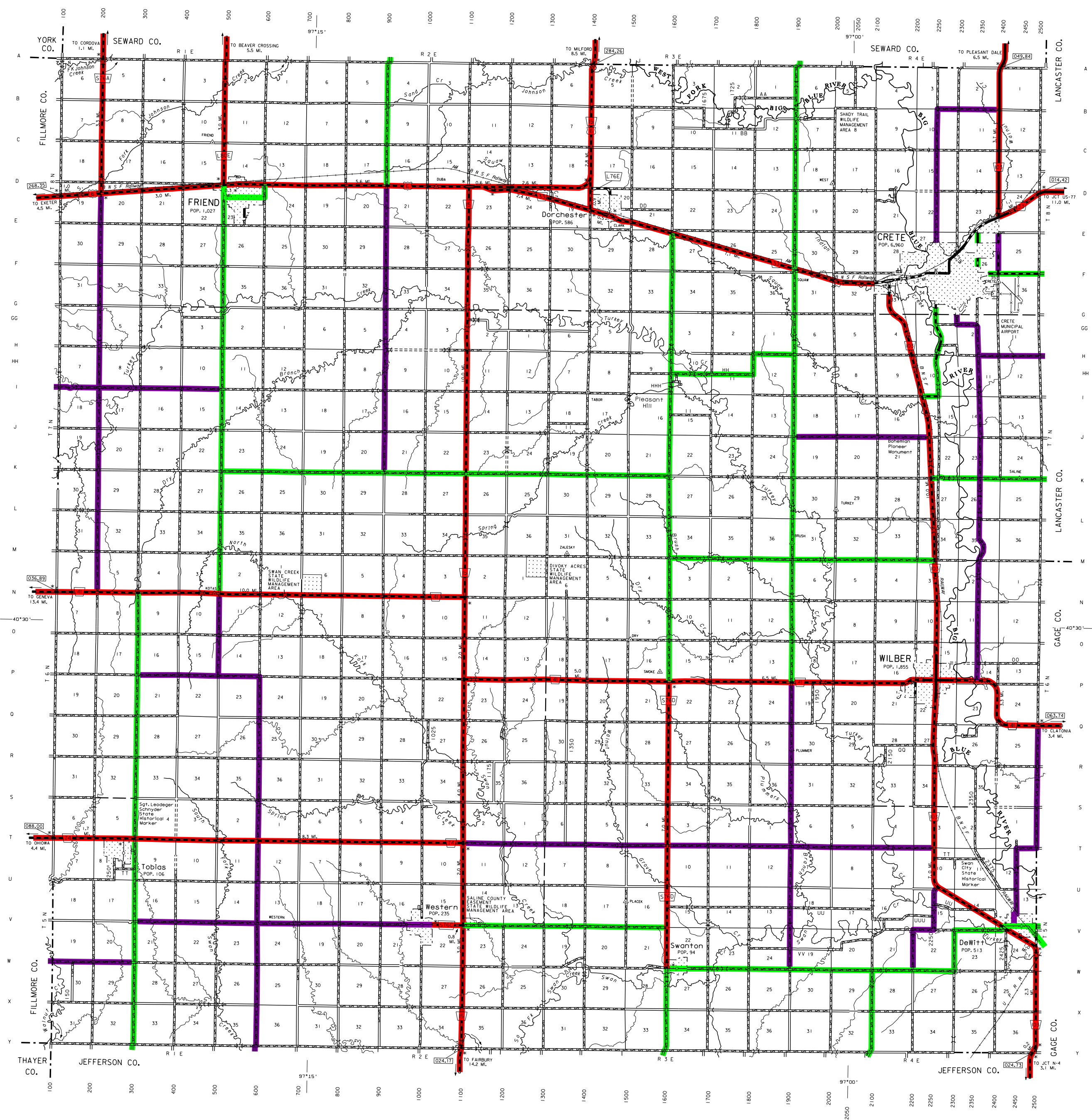


GENERAL HIGHWAY MAP SALINE COUNTY NEBRASKA

PREPARED BY THE
DEPARTMENT OF ROADS
GIS/MAPPING SECTION
IN COOPERATION WITH THE
U.S. DEPARTMENT OF TRANSPORTATION
FEDERAL HIGHWAY ADMINISTRATION
2011



DATE	REVISION HISTORY
OCT. 2000	1:1 SYSTEM
MAY 2006	HIGHWAY SUPERINTENDENT
OCT. 2009	AIRPORT BOUNDARY
MARCH 2011	COUNTY



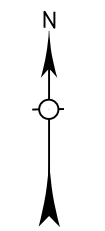
LEGEND

Primitive Road	Filling Station
Unimproved Road	Grain Elevator
Gravel or Crushed Rock	Aggregate Pit
Asphalt/Bituminous Surface	Agricultural Experiment Station
Multiple Lane Undivided Highway	Educational Institutions
Asphalt/Bituminous Surface	Public Use Area
Concrete/Brick Surface	Recreational Facilities
Multiple Lane Divided Highway	State-Numbered Highway
Concrete/Brick Surface	Rest Area
Divided Highway	Ranger Station
Interstate Highway with Full Control of Access	Fire Station
Side Roads and Streets	Community Hall
911 NAMED/Numbered Roads	Correctional Institution
Interstate-Numbered Highway	Tourist Court or Motel
US-Numbered Highway	Monument/Shell
State-Numbered Highway	Museum
State-Numbered Highway Spur	Firestation
State-Numbered Highway Link	Courthouse
Highway Reference Post Number	Armory
Interstate Exit Number	Post Office
Wide Stream	Highway Maintenance Yard
Narrow Stream	Quarry Area
Irrigation Ditch	Sewage Disposal Plant
Reservoir, Pond or Lake	Water Supply Stand Pipe
Reservoir, With Dam	Rail or TV Station
Highway Bridge Any Type	Rest Station or Point of Entry
Small Bridges-Closely Spaced	Commercial or Municipal Airport
Numbered Subdiv. Lots with which General Bridge is Shared	Airport with Paved Runways
Arch Bridge	State Boundary
Truss Bridge	County Boundary
Pedestrian Underpass	Corporate Limit Lines
Passenger Overpass	Parks and Other Reservations
Railroad Overpass	Boundary Limits of Area Shown in Enlargements, see enlargements for details
Railroad Underpass	State Capital
Dam with Road on Top	County Seat
Cattle Guard	Other Cities and Villages
Dwelling	Incorporated City or Village
Row of Dwellings	Triangulation Station
Cemetery	Points between which distances are measured indicated thus:
Church or Other Religious Institution	Longitude and Latitude
Church with Cemetery Adjacent	Industrial Plant
Headstone	

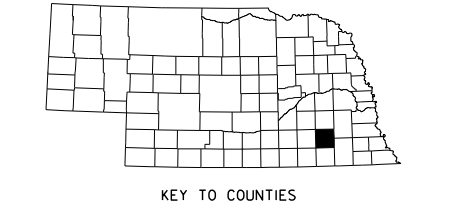
LEGEND STATE FUNCTIONAL CLASSIFICATION

INTERSTATE
EXPRESSWAY
MAJOR ARTERIAL
OTHER ARTERIAL
COLLECTOR
REMOTE RESIDENTIAL (Rural Only)
MINIMUM MAINTENANCE (Rural Only)
SCENIC RECREATION (Rural Only)
URBANIZED BOUNDARY

All Roads Not Otherwise Indicated Are Classified As Local



LAMBERT CONFORMAL CONIC PROJECTION
1983 NORTH AMERICAN DATUM
NEBRASKA COORDINATE SYSTEM



POPULATION AS OF 2010 CENSUS
STATE HIGHWAYS CORRECTED TO 2011
DIGITAL AERIAL PHOTOGRAPHY (2010)

This map is to be used for information only and is not intended to show guarantees or to be definitive on which roads are public under Nebraska Law. The Nebraska Department of Roads makes no warranty, guarantee or representation for the accuracy of this information and assumes no liability for errors or omissions. Any inconsistencies should be reported to NDOR.